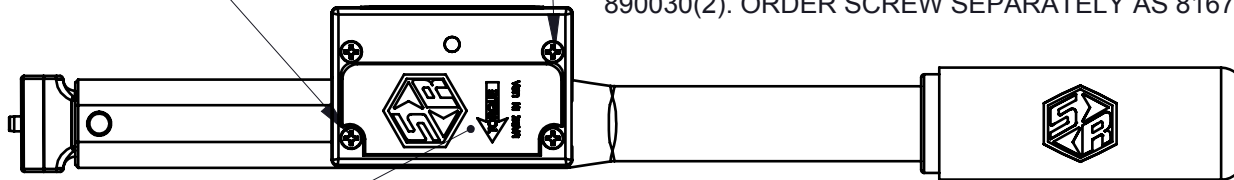


PART OF 21151 (TORQUE 1.5-2.5 INLBs)  
890029(2). ORDER SCREW SEPARATELY AS 816778.

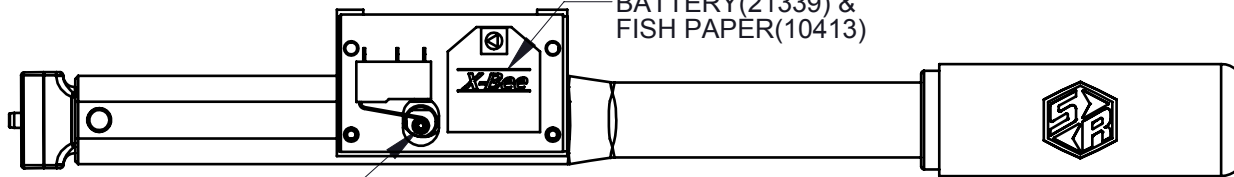
PART OF 21151 (TORQUE 1.5-2.5 INLBs)  
890030(2). ORDER SCREW SEPARATELY AS 816726.



21174(1)

21370 PC BOARD w/  
BATTERY(21339) &  
FISH PAPER(10413)

**WARNING: DO NOT MIX  
BATTERY TYPES BETWEEN  
21152 AND THIS PCB!**

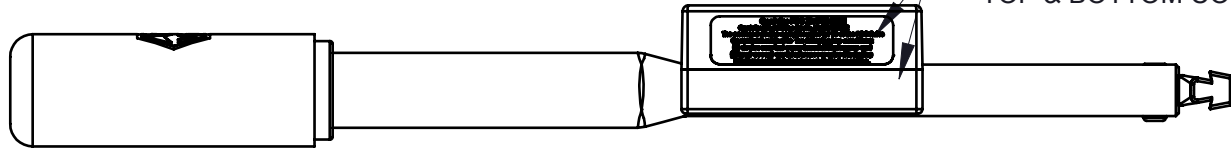


816728(1)-10\*  
SET SCREW, TRIGGER

816307, LABEL,  
TOP & BOTTOM COVER

NOTES:

1. TIGHTEN TO 1.5-2.5inlb AND APPLY A DROP OF ADHESIVE (PERMA-LOK MM115 or LOCITE 262) TO SET SCREW(890008) PRIOR TO ASSY INTO TANG(813326).



811373- TANG ASS'Y. (INCLUDES  
TANG & PIN & SPRING ADAPTER)  
857045- INSTRUCTION SHEET  
857273- SERVICE INSTRUCTIONS

816878(2)-20\*  
BELLEVILLE  
WASHER

816892(1)-10\*  
1/4" STEEL BALL

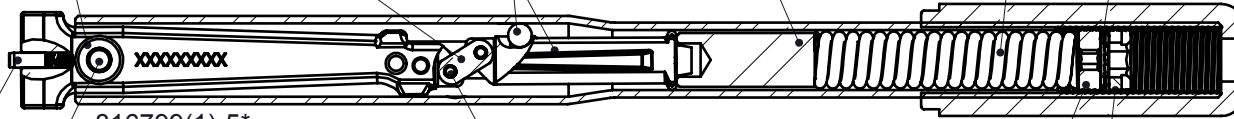
812200(1)  
SPACER

812363(1)  
TORQUE SPRING

816847(1)-10\*  
INT. LOCK WASHER

816872(1)-5\*  
PAWL LINK

812583(1)  
TORQUE BLOCK



LEGEND: ( ) = QUANTITY/TOOL  
\* = QUANTITY/MULTI-PAK

816799(1)-5\*  
HEAD BEARING PIN  
(INCLUDES RETAINING RING)

816870(2)-10\*  
PAWL PIN

812205(1)  
ADJUSTING PLUG

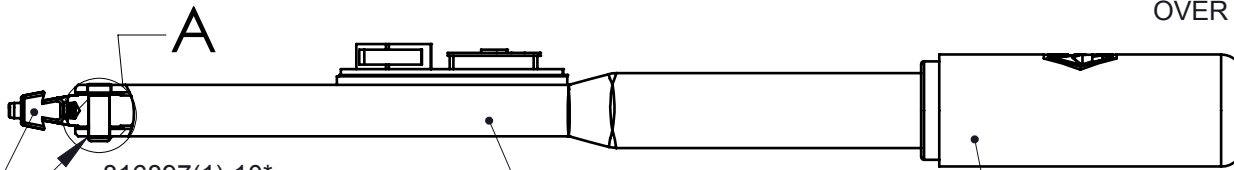
816799- THIS PIN IS FORMED OVER  
**CUSTOMER MUST** GRIND OFF FORMED END  
& INSTALL THIS PIN FORMING THE HEAD  
OVER THE RETAINING RING AS SHOWN.

DETAIL A  
SCALE 1 : 1

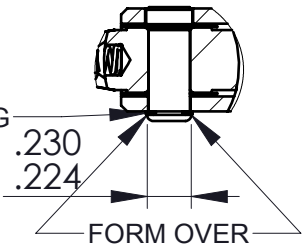
AFTER ASSEMBLY

816867(1)-10\*  
PIN & SPRING ADAPTER

812224(1)  
LOCK PLUG



RETAINING RING



FORM OVER

816897(1)-10\*  
RETAINING RING

814174(1)  
CASE

812353(1)  
GRIP

813329(1)  
TANG