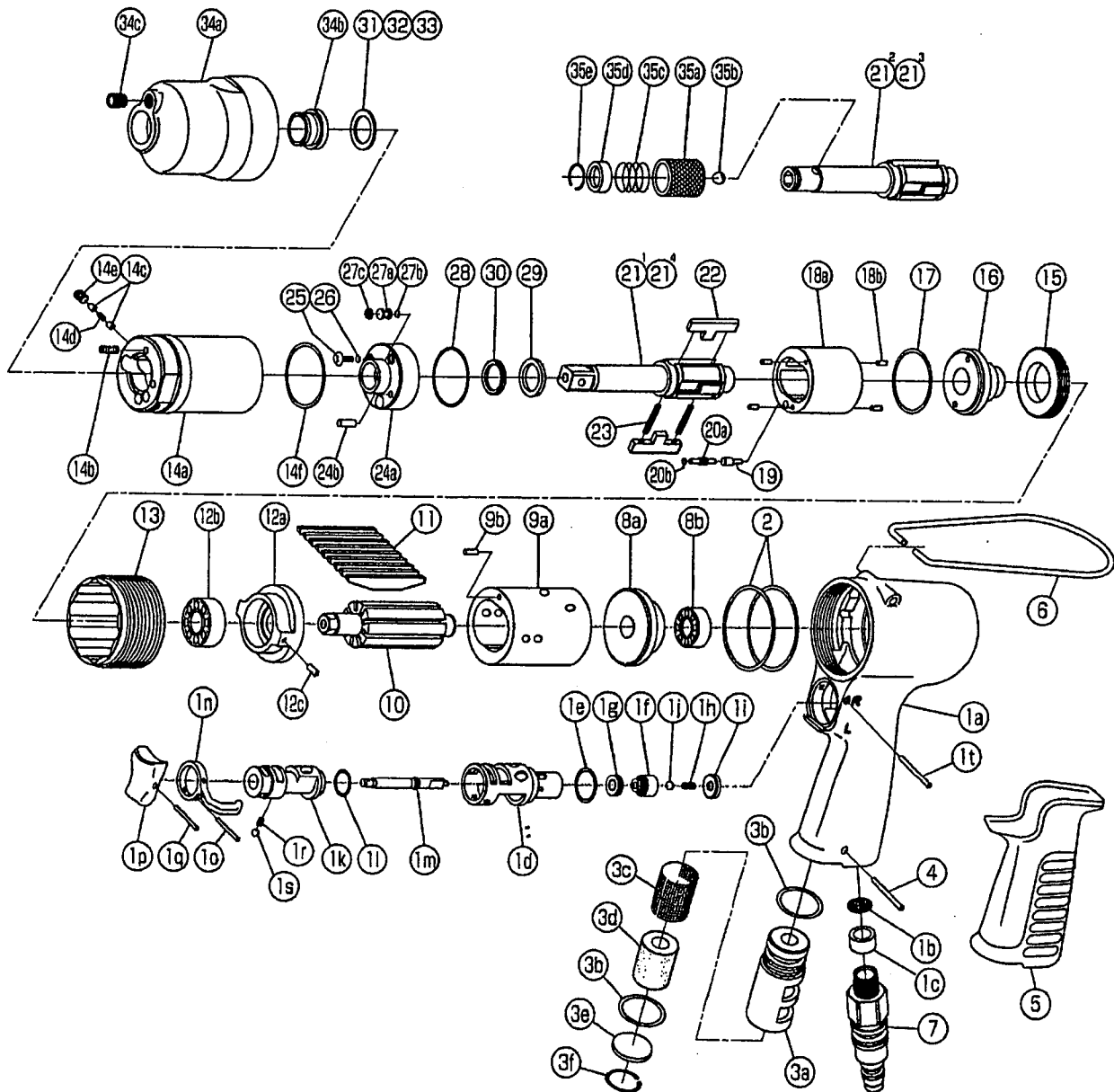


IMPULSE WRENCH

MODEL (YES.No.)	TOOL No.	MODEL (YES.No.)	TOOL No.	MODEL (YES.No.)	TOOL No.
Y-61 (03)	0158 0000 0300	Y-61-D (03)	0158 0000 0306	Y-61-G (03)	0158 0000 0311
Y-61A (03)	0158 0000 0301	Y-61A-D (03)	0158 0000 0312	Y-61G (03)	0158 0000 0340
Y-61B (03)	0158 0000 0302	Y-61B-D (03)	0158 0000 0313		
Y-61E (03)	0158 0000 0309	Y-61E-D (03)	0158 0000 0314		

Exploded View



YOKOTA EUROPA BV

P.O. BOX 392 NL-1000 AJ AMSTERDAM PHONE 020-5318800 FAX 020-5318808

Hydraulic Impulse Wrenches, Impact Wrenches, Drills, Grinders, Screw Drivers, Chippers, Sealers, Pumps

Parts List

No.	Name of Parts	Per Set	Parts No.
1	Motor Case Assy.	1set	0158 0011 00 99
	(a) Motor Case	1	* ↑
	(b) Strainer	1	0259 0111 00 00
	(c) Washer (7.5×11×5)	1	8042 2003 00 00
	(d) Throttle Bushing	1	0158 0104 00 00
	(e) O - Ring (N16)	1	9010 4009 00 00
	Throttle Valve Assy.	1set	0158 0108 00 99
	(f) Throttle Valve	1	* ↑
	(g) Rubber Pad	1	2331 0678 00 00
	(h) Spring (3.3×9.6)	1	8020 1317 00 00
	(i) Throttle Bushing Cap	1	2331 0160 00 00
	(j) Ball (3.5mm)	1	9150 2006 00 00
	(k) Reverse Valve	1	0158 0005 00 00
	(l) O - Ring (N12.5)	1	9010 4006 00 00
	(m) Throttle Rod	1	0158 0106 01 00
	(n) Reverse Lever	1	0158 0007 00 00
	(o) Spring Pin (2×12)	1	9250 1015 00 00
	(p) Throttle Knob	1	0158 0153 00 00
	(q) Spring Pin (1.5×14)	1	9250 1005 00 00
	(r) Spring (3×4)	1	8020 1246 00 00
(s) Ball (1/8)	1	9150 3009 00 00	
(t) Pin (2.5×22)	1	8055 1062 00 00	
2	O - Ring (1.6×35.7×38.9)	2	9010 6011 00 00
3	Silencer Assy.	1set	0158 0053 00 99
	(a) Silencer Body	1	* ↑
	(b) O - Ring (P12.5)	2	9010 1012 00 00
	(c) Silencer Sheet (A)	1	0158 0032 00 01
	(d) Silencer Sheet (B)	1	0158 0032 00 02
	(e) Silencer Cap	1	0094 0084 00 00
	(f) Snap Ring (RTW-18)	1	9040 1010 00 00
4	Pin G (3×20)	1	8410 6022 00 00
5	Rubber Grip	1	0158 0144 00 00
6	Hangar	1	0004 0017 00 00
7	Swivel Joint	1	9690 0015 00 00
8	Upper Plate Assy.	1set	0158 0303 01 99
	(a) Upper Plate	1	0158 0303 01 00
	(b) Ball Bearing (697MC2)	1	9102 3001 00 00
9	Cylinder Assy.	1set	0158 0304 03 99
	(a) Cylinder	1	* ↑
	(b) Pin (2.5×6)	1	8055 1053 00 00
10	Rotor	1	0259 0305 00 00
11	Vane	9	0158 0306 01 00
12	Lower Plate Assy.	1set	0259 0307 01 99
	(a) Lower Plate	1	0259 0307 01 00
	(b) Ball Bearing (6900CM)	1	9102 1001 00 00
	(c) Pin (2.5×6)	1	8055 1053 00 00
13	Lower Plate Spacer	1	0259 0311 00 00
14	Liner Case (A) Assy.	1set	0158 0422 00 98
	(a) Liner Case	1	* ↑
	(b) Screw (M3×8)	1	9480 2024 00 00
	(c) Rubber Plate	2	0259 0047 00 00

No.	Name of Parts	Per Set	Parts No.
	(d) Spring (3×5)	1	8020 1288 00 00
	(e) Screw (M4×4)	1	9480 2031 00 00
	(f) O - Ring (N30)	1	9010 4019 00 00
15	Liner Cap	1	0081 0423 01 00
16	Liner Upper Plate	1	0259 0424 01 00
17	O - Ring (1.5×26.5×29.5)	1	9010 6023 00 00
18	Liner Assy.	1set	0259 0425 00 99
	(a) Liner	1	* ↑
	(b) Pin (AA 2×5)	4	8051 3091 00 00
19	Relief Valve	1	0081 0245 01 00
20	Spring Guide (B) Assy.	1	0081 0510 01 99
	(a) Spring Guide (B)	1	* ↑
	(b) O - Ring (0.7×2×3.4)	1	9010 6020 00 00
21	Main Shaft	1	0158 0614 00 01
22	Blade	2	0081 0719 03 00
23	Spring (3.1×20)	2	8020 1296 00 00
24	Liner Lower Plate Assy.	1set	0158 0426 00 99
	(a) Liner Lower Plate	1	* ↑
	(b) Spring Pin (3×8)	1	9250 2022 00 00
25	Oil Plug	1	0081 0010 01 00
26	O - Ring (N3)	1	9010 4025 00 00
	Oil Stop Cap Assy.	1set	0081 0602 00 99
	(a) Oil Stop Cap	1	* ↑
	(b) O - Ring (N2)	1	9010 4001 00 00
	(c) Back - up Ring (N2)	1	9090 2001 00 00
28	O - Ring (1×25.2×27.2)	1	9010 6012 00 00
29	O - Ring (P12)	1	9010 1050 00 00
30	Back - up Ring (12×16×1)	1	9090 5001 00 00
31	Washer (12.5×18×0.3)	1	8041 5034 00 00
32	Washer (12.5×18×0.5)	1	8041 5011 00 00
33	Washer (12.5×18×1)	1	8041 5021 00 00
34	Hammer Case Assy.	1set	0259 0401 00 99
	(a) Hammer Case	1	0259 0401 00 00
	(b) Main Shaft Bushing	1	0259 0612 00 00
	(c) Socket Plug (1/16-27)	1	8210 8001 00 00
Parts for Y-61A · Y-61B			
21 ^a	Main Shaft (A-type)	1	0158 0614 00 51
35	Bit Chuck Assy.	1set	2057 0414 00 99
	(a) Bit Chuck	1	2057 0414 00 00
	(b) Ball (1/8)	1	9150 3009 00 00
	(c) Spring (13.5×11.2)	1	8020 1137 00 00
	(d) Spring Washer	1	2057 0419 00 00
	(e) Retaining Ring (10×1)	1	8030 1009 00 00
Parts for Y-61E			
21 ^b	Main Shaft Assy.(E-type)	1set	0158 0614 00 59

The part "*" can not be supplied individually.

So please order it as a unit of assembly shown by arrow mark (↑).

★marked parts may be not used, in some case.