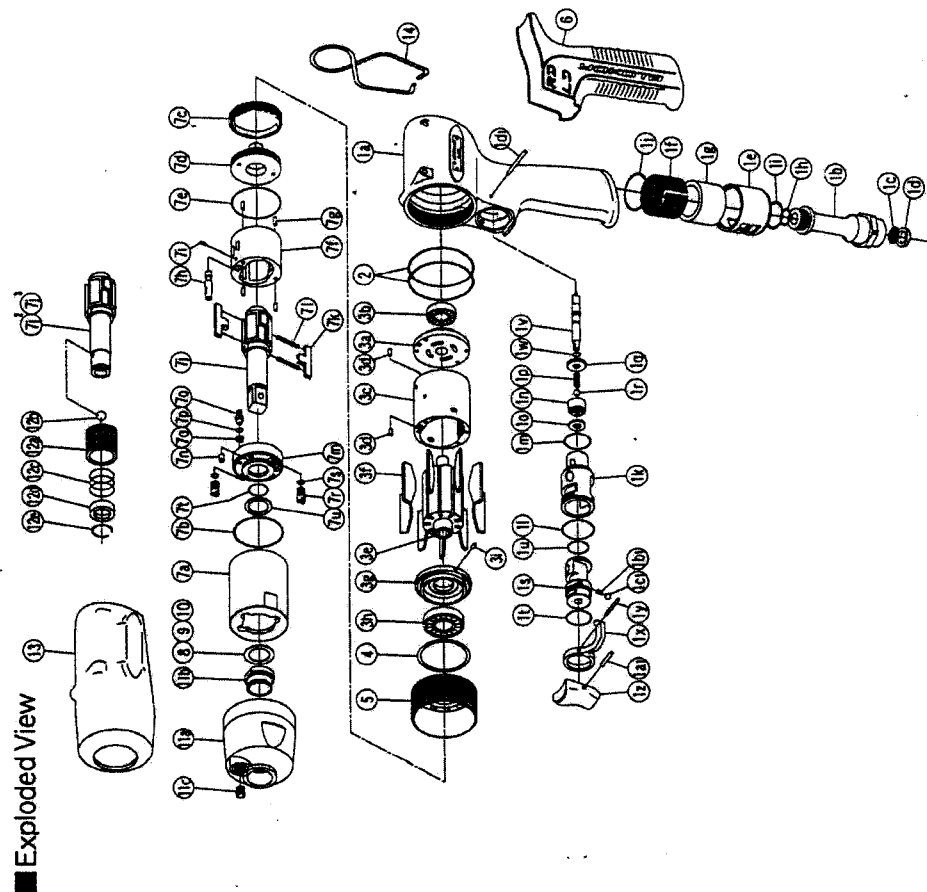




IMPULSE WRENCH

MODEL (YES.No.)	TOOL No.
YL70 (00)	0189 0000 0000
YL70A (00)	0189 0000 0001
YL70B (00)	0189 0000 0002



■ Exploded View



YOKOTA EUROPA BV

P.O. BOX 382 NL-1800 AJ AMSTERDAM PH: 020-531-8900 FAX: 020-531-8806
 e-mail: info@impulsetools.com http://www.impulsetools.com
 Hydraulic Impulse Wrenches, Impact Wrenches, Drills, Grinders, Saws, Drivers, Chippers, Spacers, Pumps.

Parts List

No.	Name of Parts	Per Set	Parts No.
1	Motor Case Assy.	1set	0189 0011 00 99
	(a) Motor Case	1	*
	Hose Joint Assy.	1set	0186 0113 00 99
	(b) Hose Joint	1	*
	(c) Strainer	1	0259 0111 00 00
	(d) Washer (7.5X11X2)	1	8042 2008 00 00
	(e) Exhaust Cover	1	0334 0016 00 00
	(f) Silencer Sheet (A)	1	0141 0032 00 01
	(g) Silencer Sheet	1	0334 0032 00 00
	(h) O - Ring (N10)	1	9010 4004 00 00
	(i) O - Ring (N16)	1	9010 4009 00 00
	(j) O - Ring (1 X 20 X 22)	1	9010 6043 00 00
	Throttle Assy.	1set	0181 0188 01 99
	(k) Throttle Bushing	1	0181 0104 00 00
	(l) O - Ring (0.7X17.8X19.2)	1	9010 6030 00 00
	(m) O - Ring (N16)	1	9010 4009 00 00
	Throttle Valve Assy.	1set	0181 0108 00 99
	(n) Throttle Valve	1	*
	(o) Rubber Pad	1	2331 0678 00 00
	(p) Spring (3.4X9.7)	1	8020 1345 00 00
	(q) Throttle Bushing Cap	1	2331 0160 00 00
	(r) Ball (3.5mm)	1	9150 2006 00 00
	(s) Reverse Valve	1	0181 0005 00 00
	(t) O - Ring (0.8X13.5X15.1)	1	9010 6031 00 00
	(v) O - Ring (N12.5)	1	9010 4006 00 00
	(w) Throttle Rod (0.5X3.7X4.7)	1	0181 0106 01 00
	(x) Reverse Lever	1	9010 6034 00 00
	(z) Spring Pin (2 X 12)	1	9250 1015 00 00
	(x) Throttle Knob	1	0158 0153 00 00
	(a1) Spring Pin (1.5X14)	1	9250 1005 00 00
	(b1) Spring (9X4)	1	8020 1246 00 00
	(c) Ball (1/8)	1	9150 3009 00 00
	(d1) Pin (2 X 22)	1	9055 1050 00 00
2	O - Ring (JASO 1033)	2	9011 3004 00 00
3	Motor Assy.	1set	0186 0305 00 99
	Upper Plate Assy.	1set	0186 0303 00 99
	(a) Upper Plate	1	0186 0303 00 00
	(b) Ball Bearing (6901CM)	1	9102 1003 00 00
	Cylinder Assy.	1set	0186 0304 00 99
	(c) Cylinder	1	*
	(d) Pin (2 X 4)	2	8673 2001 00 00
	(e) Rotor	1	0186 0305 00 00
	(f) Vane	9	0186 0306 00 00
	Lower Plate Assy.	1set	0186 0307 00 99
	(g) Lower Plate	1	0186 0307 00 00
	(h) Ball Bearing (6901CM)	1	9102 1003 00 00
	(i) Pin (2 X 4)	1	8673 2001 00 00
4	ST - Packing (27.2X31X0.2)	1	8011 1008 00 00
5	Lower Plate Spacer	1	0189 0311 00 00
6	Rubber Grip	1	0188 0144 00 00

No.	Name of Parts	Per Set	Parts No.
7	Liner Case Assy.	1set	0189 0422 00 99
	(a) Liner Case	1	0189 0422 00 00
	(b) O - Ring (1X28.2X30.2)	1	9010 6036 00 00
	(c) Liner Cap	1	0186 0423 00 00
	(d) Liner Upper Plate	1	0186 0424 00 00
	(e) O - Ring (JASO 1026)	1	9011 3003 00 00
	Liner Assy.	1set	0186 0425 00 99
	(f) Liner	1	*
	(g) Pin FF (2X4.8 41-44 HRC)	4	8052 1041 00 00
	(h) Relief Valve	1	0186 0245 00 00
	(i) Pin (1.5X4)	1	8051 1314 00 00
	(j) Main Shaft	1	0189 0614 00 01
	(k) Blade	2	0088 0719 03 00
	(l) Spring (3.1 X 23)	2	8020 1349 00 00
	Liner Lower Plate Assy.	1set	0189 0426 00 99
	(m) Liner Lower Plate	1	0189 0426 00 00
	(n) Pin (3X4 41-44 HRC)	1	8052 1042 00 00
	(o) Adjust Bolt	1	0186 0522 00 00
	(p) O - Ring (N2)	1	9010 4001 00 00
	(q) Back-up Ring (32X5X1)	1	9090 1028 00 00
	(r) Oil Plug	2	0181 0010 00 00
	(s) O - Ring (N2)	2	9010 4001 00 00
	(t) O - Ring (P12)	1	9011 7001 00 00
	(u) Back-up Ring (12X18X0.8)	1	9090 1010 00 00
8	Washer (12.5X18X0.8)	1	8041 5034 00 00
9	Washer (12.5X18X0.5)	1	8041 5011 00 00
10	Washer (12.5X18X1)	1	8041 5021 00 00
11	Hammer Case Assy.	1set	0189 0401 00 99
	(a) Hammer Case	1	0189 0401 00 00
	(b) Main Shaft Bushing	1	0189 0612 00 00
	(c) Socket Plug (1/16-27)	1	8210 4001 00 00

Parts for YLa70A - YLa70B

7 ²	Liner Case Assy.	1set	0189 0422 00 99
	(j) Main Shaft (A-type)	1	0189 0614 00 51
7 ³	Liner Case Assy.	1set	0189 0422 00 97
	(j) Main Shaft (B-type)	1	0189 0614 00 92
12	Bit Chuck Assy.	1set	2057 0414 00 00
	(a) Bit Chuck	1	2057 0414 00 00
	(b) Ball (1/8)	1	9150 3009 00 00
	(c) Spring (13.5X10)	1	8020 1340 00 00
	(d) Spring Washer	1	2331 0419 00 00
	(e) Retaining Ring (10X1)	1	8030 1009 00 00

Standard Accessories

13	Protector	1	0189 0029 00 00
14	Hangar	1	0188 0017 00 00
	Hex. Wrench (H1.5X65X65)	1	9610 1012 00 00
	Hex. Wrench (H5/32)	1	9610 3008 00 00

The part "*" can not be supplied individually.
 So please order it as a unit of assembly shown by arrow mark (↑).
 ☆ marked parts: use one of them.

EDV (Vries, de E)

Van: Y.TAKEDA [overseas@yokota-kogyo.co.jp]

Verzonden: woensdag 30 juni 2004 8:33

Aan: EDV (Vries, de E)

Onderwerp: Exploded View of YLa-70

Dear de Vries san,

Please be advised I found mistake in exploded view on YLa-70.

1w suppose to be O-ring (0.5 X 3.7 X 4.7) 9010 6034 0000

1x suppose to be Throttle Rod 0181 0106 0100

We will send you correct one when it will be ready.

With best regards,

YOKOTA INDUSTRIAL CO., LTD.

INTERNATIONAL MARKETING DIV.

Yuichiro Takeda