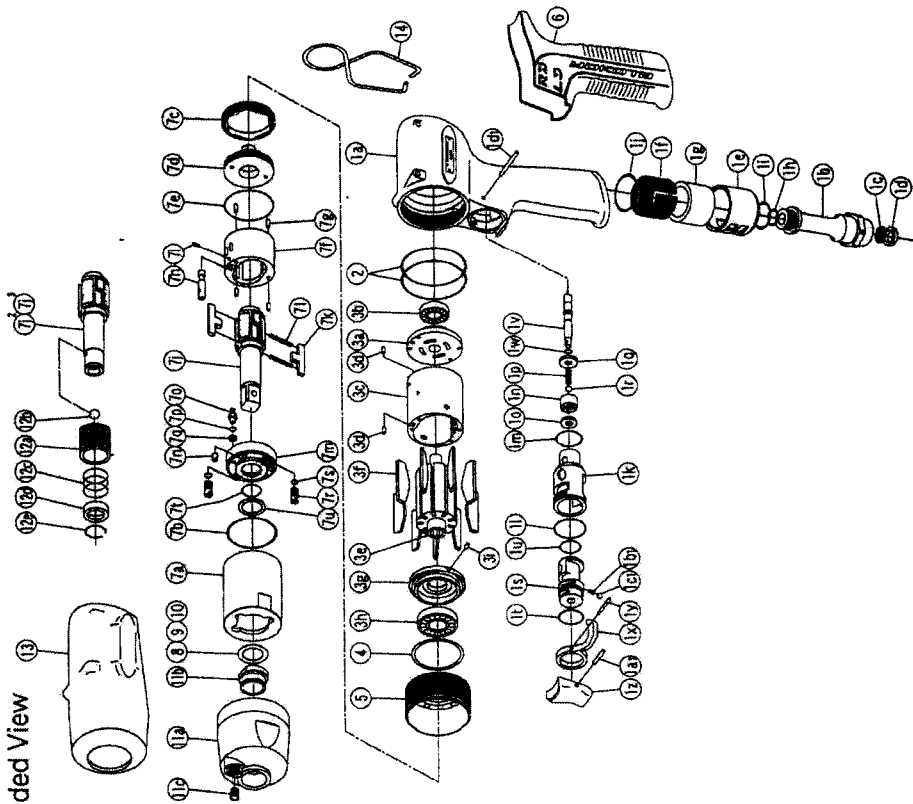




IMPULSE WRENCH

MODEL (YES.No.)	TOOL No.
YLa80 (00)	0191 0000 0000
YLa80A (00)	0191 0000 0001
YLa80B (00)	0191 0000 0002

Exploded View



YOKOTA EUROPA BV

P.O. BOX 382 NL-1000 AJ AMSTERDAM - PHONE 020-5318900 - FAX 020-5318806
 e-mail: info@impulsetools.com / http://www.impulsetools.com

Hydraulic Impulse Wrenches, Impact Wrenches, Drills, Grinders, Screw Drivers, Chippers, Spacers, Pumps.

Parts List

No.	Name of Parts	Per Set	Parts No.
1	Motor Case Assy.	1set	0191 0011 00 99
	(a) Motor Case	1	0181 0113 00 99
	Hose Joint Assy.	1set	0181 0113 00 99
	(b) Hose Joint	1	0259 0111 00 00
	(c) Strainer	1	8042 2008 00 00
	(d) Washer (7.5X11X2)	1	0334 0016 00 00
	(e) Exhaust Cover	1	0334 0032 00 01
	(f) Silencer Sheet (A)	1	0334 0032 00 01
	(g) Silencer Sheet	1	9010 4004 00 00
	(h) O - Ring (N10)	1	9010 4008 00 00
	(i) O - Ring (N16)	1	9010 6043 00 00
	(j) O - Ring (1X20X22)	1	0181 0188 01 99
	Throttle Assy.	1set	0181 0188 01 99
	(k) Throttle Bushing	1	0181 0104 00 00
	(l) O - Ring (0.7X1.8X19.2)	1	9010 6030 00 00
	(m) O - Ring (N16)	1	9010 4009 00 00
	Throttle Valve Assy.	1set	0181 0108 00 99
	(n) Throttle Valve	1	2331 0678 00 00
	(o) Rubber Pad	1	8020 1345 00 00
	(p) Spring (3.4X9.7)	1	2331 0160 00 00
	(q) Throttle Bushing Cap	1	9150 2008 00 00
	(r) Ball (3.5mm)	1	0181 0005 00 00
	(s) Reverse Valve	1	0181 6031 00 00
	(t) O - Ring (0.8X1.5X15.1)	1	9010 4006 00 00
	(u) O - Ring (N12.5)	1	0181 0108 01 00
	(v) Throttle Rod	1	9010 6034 00 00
	(w) O - Ring (0.5X3.7X4.7)	1	9010 4007 00 00
	(x) Reverse Lever	1	9250 1015 00 00
	(y) Spring Pin (2X12)	1	0158 0153 00 00
	(z) Throttle Knob	1	9150 1005 00 00
	(a1) Spring Pin (1.5X14)	1	8020 1246 00 00
	(b1) Spring (3X4)	1	9150 3009 00 00
	(c1) Ball (1/8)	1	8055 1050 00 00
2	O - Ring (JASO 1033)	2	9011 3004 00 00
3	Motor Assy.	1set	0191 0305 00 99
	Upper Plate Assy.	1set	0186 0303 00 99
	(a) Upper Plate	1	0186 0303 00 00
	(b) Ball Bearing (687MC2)	1	9102 3001 00 00
	Cylinder Assy.	1set	0191 0304 00 99
	(c) Cylinder	1	8673 2001 00 00
	(d) Pin (2X4)	2	0191 0305 00 00
	(e) Rotor	9	0191 0306 00 00
	(f) Vane	1set	0186 0307 00 99
	Lower Plate Assy.	1set	0186 0307 00 99
	(g) Lower Plate	1	0186 0307 00 00
	(h) Ball Bearing (6801CM)	1	9102 1003 00 00
	(i) Pin (2X4)	1	8673 2001 00 00
4	ST - Packing (27X31X0.2)	1	8011 1008 00 00
5	Lower Plate Spacer	1	0189 0311 00 00
6	Rubber Grip	1	0188 0144 00 00
	Parts for YLa80A - YLa80B		
7 ¹	Liner Case Assy.	1set	0191 0422 00 98
	(a) Liner Case	1	0191 0422 00 00
	(b) O - Ring (1X28.2X30.2)	1	9010 6036 00 00
	(c) Liner Cap	1	0186 0423 00 00
	(d) Liner Upper Plate	1	0186 0424 00 00
	(e) O - Ring (JASO 1026)	1	9011 3003 00 00
	Liner Assy.	1set	0191 0425 00 99
	(f) Liner	1	8052 1041 00 00
	(g) Pin FF (2X4.8 41-44 HRC)	4	0191 0245 00 00
	(h) Relief Valve	1	8051 1314 00 00
	(i) Pin (1.5X4)	1	0181 0614 00 01
	(j) Main Shaft	2	0081 0719 04 00
	(k) Blade	2	8020 1349 00 00
	(l) Spring (3.1X2.3)	2	0189 0426 00 00
	Liner Lower Plate Assy.	1set	0189 0426 00 99
	(m) Liner Lower Plate	1	8052 1042 00 00
	(n) Pin (3X4 41-44 HRC)	1	0188 0522 00 00
	(o) Adjust Bolt	1	9010 4001 00 00
	(p) O - Ring (N2)	1	9090 1028 00 00
	(q) Back-up Ring (3.2X5X1)	1	0181 0010 00 00
	(r) Oil Plug	2	9010 4001 00 00
	(s) O - Ring (N2)	2	9011 7001 00 00
	(t) O - Ring (P12)	1	8041 5034 00 00
8	Washer (12.5X18X0.8)	1	8041 5011 00 00
9	Washer (12.5X18X0.5)	1	8041 5021 00 00
10	Washer (12.5X18X1)	1	0191 0401 00 99
11	Hammer Case Assy.	1set	0188 0612 00 00
	(a) Hammer Case	1	8210 4001 00 00
	(b) Main Shaft Bushing	1	
	(c) Socket Plug (1/16-27)	1	
	Parts for YLa80A - YLa80B		
7 ²	Liner Case Assy.	1set	0191 0422 00 98
	(j) Main Shaft (A-type)	1	0191 0814 00 51
7 ³	Liner Case Assy.	1set	0191 0422 00 97
	(j) Main Shaft (B-type)	1	0191 0814 00 52
12	Bit Chuck Assy.	1set	2057 0414 00 99
	(a) Bit Chuck	1	2057 0414 00 00
	(b) Ball (1/8)	1	9150 3008 00 00
	(c) Spring (13.5X10)	1	8020 1340 00 00
	(d) Spring Washer	1	2331 0419 00 00
	(e) Retaining Ring (10X1)	1	8030 1009 00 00
	Standard Accessories		
13	Protector	1	0191 0029 00 00
14	Hangar	1	0188 0017 00 00
	Hex. Wrench (H1.5X65X65)	1	9610 1012 00 00
	Hex. Wrench (H1.5/32)	1	9610 3068 00 00

The part "*" can not be supplied individually.
 So please order it as a unit of assembly shown by arrow mark (↑).
 ☆ marked parts: use one of them.