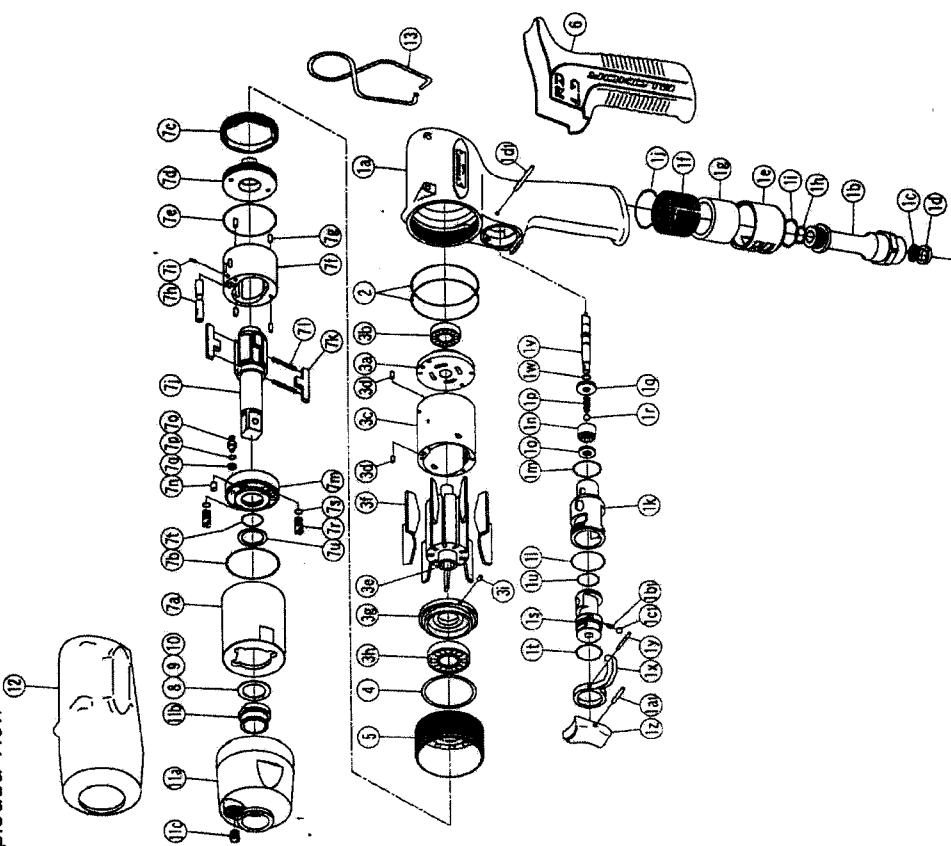




# IMPULSE WRENCH

MODEL (YES.No.)	TOOL No.
Y-La90 (00)	0188 0000 0000

Exploded View



## Parts List

No.	Name of Parts	Per Set	Parts No.	No.	Name of Parts	Per Set	Parts No.
1	Motor Case Assy.	1set	0188 0011 00 99	7	Liner Case Assy.	1set	0188 0422 00 99
	(a) Motor Case	1set	0181 0113 00 99		(a) Liner Case	1	0188 0422 00 00
	Hose Joint Assy.	1set	0259 0111 00 00		(b) O - Ring (1.57X29.87X33.01)	1	9010 6042 00 00
	(b) Hose Joint	1	0334 0016 00 00		(c) Liner Cap	1	0181 0423 00 00
	(c) Strainer	1	9042 2008 00 00		(d) Liner Upper Plate	1	0181 0424 00 00
	(d) Washer (7.5X11X2)	1	0334 0016 00 00		(e) O - Ring (N30)	1	9010 4019 00 00
	(e) Exhaust Cover	1	0141 0032 00 01		Liner Assy.	1set	0181 0425 00 99
	(f) Silencer Sheet (A)	1	0334 0032 00 00		(f) Liner	1	8052 3004 00 00
	(g) Silencer Sheet	1	9010 4004 00 00		(g) Pin FF (3X4.5 41-44 HRC)	4	0181 0245 00 00
	(h) O - Ring (N10)	1	9010 4009 00 00		(h) Relief Valve (1.5X4)	1	8051 1314 00 00
	(i) O - Ring (N16)	1	9010 6043 00 00		(i) Pin	1	0188 0614 00 01
	(j) O - Ring (1X20X22)	1set	0181 0186 01 99		(j) Main Shaft	2	0181 0719 00 00
	Throttle Assy.	1set	0181 0104 00 00		(k) Blade	2	8020 1346 00 00
	(k) Throttle Bushing	1	9010 6030 00 00		(l) Spring (3.4X28)	2	0188 0426 00 99
	(l) O - Ring (0.7X17.8X19.2)	1	9010 4009 00 00		Liner Lower Plate Assy.	1set	0188 0426 00 00
	(m) O - Ring (N16)	1	9010 4009 00 00		(m) Liner Lower Plate	1	8052 1042 00 00
	Throttle Valve Assy.	1set	0181 0108 00 99		(n) Pin (3X4 41-44 HRC)	1	0188 0622 00 00
	(n) Throttle Valve	1	2331 0678 00 00		(o) Adjust Bolt (N2)	1	9010 4001 00 00
	(o) Rubber Pad (3.4X9.7)	1	8020 1345 00 00		(p) O - Ring (N2)	1	9090 1010 00 00
	(p) Spring	1	9150 2008 00 00		(q) Back-up Ring (3.2X5X1)	1	8090 1028 00 00
	(q) Throttle Bushing Cap	1	0181 0005 00 00		(r) Oil Plug	2	0181 0010 00 00
	(r) Ball (3.5mm)	1	9010 6031 00 00		(s) O - Ring (N2)	2	9010 4001 00 00
	(s) Reverse Valve	1	9010 6031 00 00		(t) O - Ring (P12)	1	9011 7001 00 00
	(t) O - Ring (0.8X13.5X15.1)	1	9010 4006 00 00		(u) Back-up Ring (12X16X0.8)	1	8090 1010 00 00
	(v) O - Ring (N12.5)	1	0181 0108 01 00		8* Washer (12.5X18X0.3)	1	8041 5034 00 00
	(v) Throttle Rod	1	9010 6034 00 00		9* Washer (12.5X18X0.5)	1	8041 5011 00 00
	(w) O - Ring (0.3X3.7X4.7)	1	0158 0007 00 00		10* Washer (12.5X18X1)	1	8041 5021 00 00
	(x) Reverse Lever (2X12)	1	9250 1015 00 00		11 Hammer Case Assy.	1set	0188 0401 00 99
	(y) Spring Pin (1.5X14)	1	0158 0153 00 00		(a) Hammer Case	1	0188 0401 00 00
	(z) Throttle Knob	1	9250 1005 00 00		(b) Main Shaft Bushing (1/16-27)	1	0259 0612 00 00
	(a) Spring Pin (3X4)	1	8020 1246 00 00		(c) Socket Plug (1/16-27)	1	8210 4001 00 00
	(b) Ball (1/8)	1	8055 1050 00 00		Standard Accessories		
	(c) Pin (2X22)	1	9010 6011 00 00		12 Protector	1	0188 0029 00 00
	2 O - Ring (1.6X35.7X38.9)	2	0181 0303 01 99		13 Hanger	1	0188 0017 00 00
	Motor Assy.	1set	0181 0303 01 99		Hex. Wrench (H1.5X65X65)	1	9610 1012 00 00
	Upper Plate Assy.	1	0181 0303 01 00		Hex. Wrench (H5/32)	1	9610 3008 00 00
	(a) Upper Plate	1	0181 0303 01 00				
	(b) Ball Bearing (697MC2)	1	9102 3001 00 00				
	Cylinder Assy.	1set	0181 0304 01 99				
	(c) Cylinder	1	8055 1040 00 00				
	(d) Pin (2X5)	2	0181 0305 01 00				
	(e) Rotor	9	0181 0306 00 00				
	(f) Vane	1set	0188 0307 00 99				
	Lower Plate Assy.	1	0188 0307 00 00				
	(g) Lower Plate	1	9102 1003 00 00				
	(h) Ball Bearing (6901CM)	1	8055 1040 00 00				
	(i) Pin (2X5)	1	8011 1008 00 00				
	4 ST - Packing (27.2X31X0.2)	1	0188 0311 00 00				
	5 Lower Plate Spacer	1	0188 0144 00 00				
	6 Rubber Grip	1					

The part "※" can not be supplied individually.  
 So please order it as a unit of assembly shown by arrow mark (↑).  
 ※ marked parts; use one of them.

**YOKOTA EUROPA BV**  
 P.O. BOX 382 NL - 6000 AJ AMSTERDAM, PHONE 020-531 8800, FAX 020-531 8805  
 e-mail info@impulsetools.com, http://www.impulsetools.com  
 Hydraulic Impulse Wrenches, Impact Wrenches, Drills, Grinders, Screw Drivers, Chippers, Sealers, Pumps.

