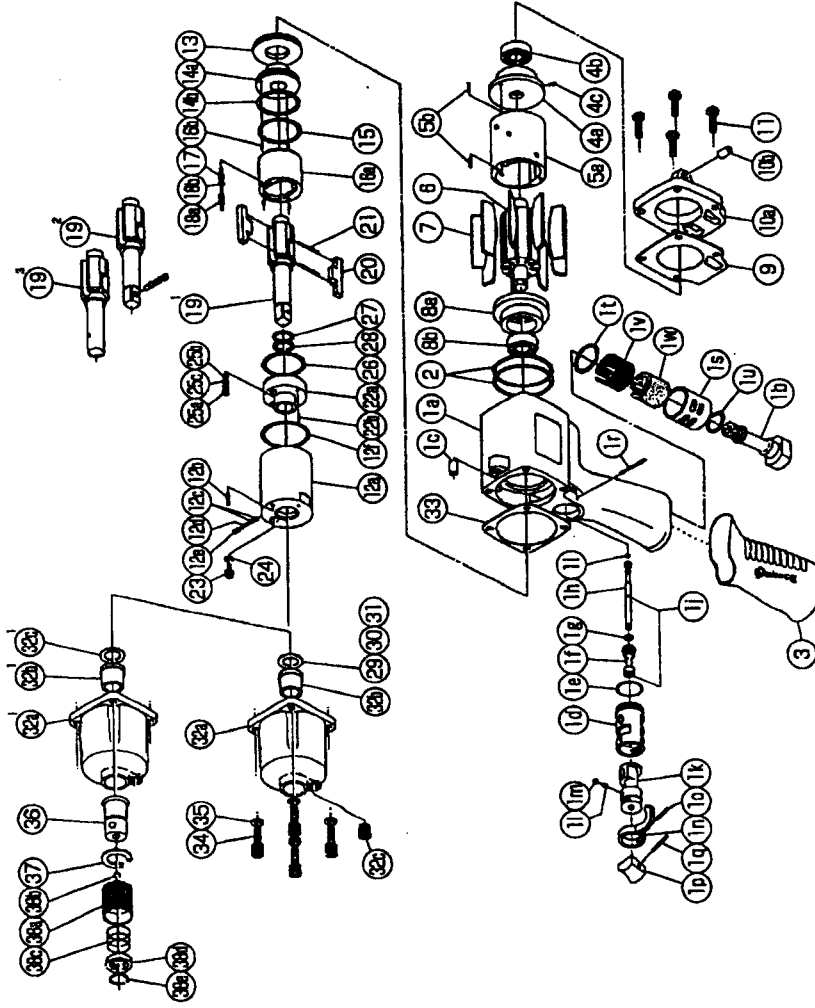


yokota
FA SYSTEM & AIR TOOLS

IMPULSE WRENCH

MODEL (YES.No.)	TOOL No.
Y-70 (04)	0135 0000 0400
Y-70E (04)	0135 0000 0409
Y-70-H (05)	0135 0000 0515
Y-70-D (04)	0135 0000 0406
Y-70E-D(04)	0135 0000 0414

Exploded View



Parts List

No.	Name of Parts	Per Set	Parts No.
1	Motor Case Assy.	1set	0135 0011 01 99
	(a) Motor Case (A)	1	*
	(b) Hose Joint	1	0141 0113 00 00
	(c) Spring Pin (6x10)	1	9250 1082 00 00
	Throttle Bushing Assy.	1set	0187 0104 00 99
	(d) Throttle Bushing	1	*
	(e) O-Ring (N16)	1	9010 4009 00 00
	Throttle Rod Bushing Assy.	1set	0187 0105 00 99
	(f) Throttle Rod Bushing	1	*
	(g) O-Ring (P6)	1	9010 1049 00 00
	Throttle Rod Assy.	1set	0187 0106 00 99
	(h) Throttle Rod	1	*
	(i) O-Ring (N3)	1	9010 4051 00 00
	(j) Snap Ring (ETW-2.8)	1	9040 5008 00 00
	(k) Reverse Valve	1	0141 0005 02 00
	(l) Spring (3x4)	1	8020 1246 00 00
	(m) Ball (1/8)	1	9150 3009 00 00
	(n) Reverse Lever	1	2315 0007 00 00
	(o) Spring Pin (2x12)	1	9250 1015 00 00
	(p) Throttle Knob	1	0094 0153 00 00
	(q) Spring Pin (1.5x14)	1	9250 1005 00 00
	(r) AA Pin (3x23.8)	1	8051 3041 00 00
	(s) Exhaust Cover	1	0141 0018 00 00
	(t) O-Ring (N20)	1	9010 4010 00 00
	(u) O-Ring (N15)	1	9010 4008 00 00
	(v) Silencer Sheet (A)	1	0141 0032 00 01
	(w) Silencer Sheet (B)	1	0141 0032 00 02
2	O-Ring (N40)	2	9010 4017 00 00
3	Rubber Grip	1	0141 0144 00 00
4	Upper Plate Assy.	1set	0135 0303 01 99
	(a) Upper Plate	1	0135 0303 01 00
	(b) Ball Bearing (6901CM)	1	9102 1003 00 00
	(c) AA Pin (2x6.8)	1	8051 3017 00 00
5	Cylinder Assy.	1set	0135 0304 02 99
	(a) Cylinder	1	*
	(b) Pin (2.5x6)	2	8055 1053 00 00
6	Rotor	2	0135 0305 00 00
7	Vane	9	0135 0306 00 00
8	Lower Plate Assy.	1set	0135 0307 04 99
	(a) Lower Plate	1	0135 0307 03 00
	(b) Ball Bearing (6900CM)	1	9102 1001 00 00
9	S-Packing (A)	1	0135 0003 00 01
10	Motor Case Cover Assy.	1set	0135 0001 00 99
	(a) Motor Case Cover	1	*
	(b) Spring Pin (6x10)	1	9250 1082 00 00
11	Screw (M5x18)	4	8071 1012 00 00
12	Liner Case (A) Assy.	1set	0135 0422 01 98
	(a) Liner Case	1	*
	(b) Screw (M3x8)	1	9480 2024 00 00
	(c) Rubber Plate	2	0259 0047 00 00
	(d) Spring (3x5)	1	8020 1288 00 00
	(e) Screw (M4x4)	1	9480 2031 00 00
	(f) O-Ring (N32)	1	9010 4014 00 00

No.	Name of Parts	Per Set	Parts No.
13	Liner Cap	1	0086 0423 00 00
14	Liner Upper Plate Assy.	1set	0135 0424 01 99
	(a) Liner Upper Plate	1	0135 0424 01 00
	(b) O-Ring (N28)	1	9010 4029 00 00
15	O-Ring (1.3x28.7x31.3)	1	9010 6010 00 00
16	Liner Assy.	1set	0135 0425 01 99
	(a) Liner	1	*
	(b) Pin (2.5x6 41-44HRC)	4	8052 1030 00 00
17	Relief Valve	1	0086 0245 00 00
18	Spring Guide (B) Assy.	1set	0135 0510 00 99
	(a) Spring Guide (B)	1	*
	(b) O-Ring (0.7x2x3.4)	1	9010 6020 00 00
19	Main Shaft	1	0281 0614 00 01
20	Blade	2	0086 0719 03 00
21	Spring (3.4x22.7)	2	8020 1253 00 00
22	Liner Lower Plate Assy.	1set	0135 0426 00 99
	(a) Liner Lower Plate	1	*
	(b) Spring Pin (3x8)	1	9250 2022 00 00
23	Oil Plug	1	0081 0010 01 00
24	O-Ring (N3)	1	9010 4025 00 00
25	Oil Stop Cap Assy.	1set	0081 0602 00 99
	(a) Oil Stop Cap	1	*
	(b) O-Ring (N2)	1	9010 4001 00 00
	(c) Back-up Ring (N2)	1	9090 2001 00 00
26	O-Ring (1x29.2x31.2)	1	9010 6022 00 00
27	O-Ring (2.3x11.8x16.4)	1	9011 7001 00 00
28	Back-up Ring (12x18x1)	1	9090 5001 00 00
29	Washer (12.5x18x0.3)	1	8041 5034 00 00
30	Washer (12.5x18x0.5)	1	8041 5011 00 00
31	Washer (12.5x18x1)	1	8041 5021 00 00
32	Hammer Case Assy.	1set	0135 0401 00 99
	(a) Hammer Case	1	0135 0401 00 00
	(b) Main Shaft Bushing	1	0081 0612 00 00
	(c) Socket Plug (R 1/8)	1	8210 5001 00 00
33	S-Packing (B)	1	0135 0003 00 02
34	Screw (M5x18)	4	8070 3052 00 00
35	Spring Washer (M5)	4	9200 3005 00 00
Parts for Y-70E			
19*	Main Shaft Assy.(E-type)	1set	0281 0614 00 59
Parts for Y-70-H			
19*	Main Shaft	1	0135 0614 02 41
36	Chuck Body (HexB)	1	0135 0663 01 00
37	Snap Ring (ISTW-1.5)	1	9040 4007 00 00
38	Bit Chuck Assy.	1set	0135 0414 00 99
	(a) Bit Chuck	1	0135 0414 00 00
	(b) Ball (4mm)	1	9150 1005 00 00
	(c) Spring (17.5x12)	1	8020 1294 00 00
	(d) Spring Washer	1	0135 0419 00 00
	(e) Retaining Ring (14x1)	1	8030 1075 00 00
32*	Hammer Case Assy.	1set	0135 0401 00 49
	(a) Hammer Case (A)	1	0135 0401 00 01
	(b) Main Shaft Bushing	1	0135 0612 00 00
	(c) Socket Plug (R 1/8)	1	8210 5001 00 00

The part "*" can not be supplied individually. So please order it as a unit of assembly shown by arrow mark ().
* marked parts may be not used, in some case.



YOKOTA EUROPA BV

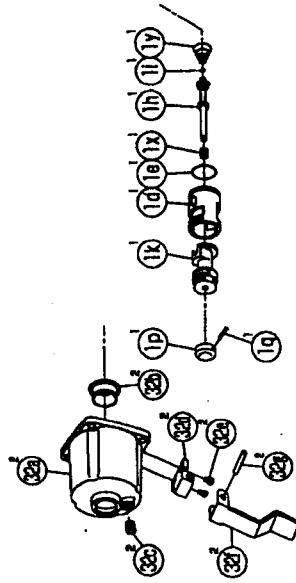
e-mail: info@impulsetools.com http://www.impulsetools.com
P.O. BOX 392 NL - 1000 AJ AMSTERDAM PHONE: 020 - 625 29 53 FAX: 020 - 625 35 69
Hydraulic, Pneumatic, Wrenches, Impact Wrenches, Drills, Grinders, Screw Drivers, Chain Saws, Planers

yokota
FA SYSTEM & AIR TOOLS

IMPULSE WRENCH

MODEL (YES.No.)	TOOL No.
Y-70 (04)	0135 0000 0400
Y-70E (04)	0135 0000 0409
Y-70-H (05)	0135 0000 0515
Y-70-D (04)	0135 0000 0406
Y-70E-D(04)	0135 0000 0414

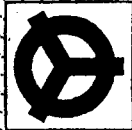
Parts for Y-70-D • Y-70E-D



Parts List

No.	Name of Parts	Per Set	Parts No.	No.	Name of Parts	Per Set	Parts No.
Special Parts for D-version							
1	Motor Case Assy.	1set	0135 0011 00 84		Swivel Joint	1	9690 0015 00 00
	Throttle Bushing Assy.	1set	0141 0104 01 99		Hex. Wrench (H1.5x65x65)	1	9610 1012 00 00
	(d) Throttle Bushing (N16)	1	*		Hex. Wrench (H5)	1	9610 1006 00 00
	(e) O - Ring	1	9010 4009 00 00		Protector	1	0135 0029 00 00
	Throttle Rod Assy.	1set	0141 0106 03 99				
	(f) Throttle Rod	1	*				
	(i) O - Ring (No.3)	1	9010 3021 00 00				
	(k) Reverse Valve	1	0141 0005 01 00				
	(g) Throttle Knob	1	0281 0153 00 00				
	(q) Spring Pin (1.5x12)	1	9250 1004 00 00				
	(k) Spring (5.2 x 4)	1	8020 1284 00 00				
	(y) Conical Spring (5x11.5x12)	1	8020 3081 00 00				
32	Hammer Case Assy.	1set	0135 0401 00 84				
	(a) Hammer Case (B)	1	0135 0401 00 02				
	(b) Main Shaft Bushing	1	0135 0612 00 00				
	(c) Socket Plug (PT1/8)	1	8210 5001 00 00				
	(d) Blecket	1	0281 0023 00 00				
	(e) Cross Recessed Head Screw (M3x8)	2	9440 2002 00 00				
	(f) Throttle Lever (3x18)	1	0281 0110 00 00				
	(g) Spring Pin (3x18)	1	9250 2018 00 00				

The part "*" can not be supplied individually.
So please order it as a unit of assembly shown by arrow mark (↑).
★ marked parts may be not used, in some case.



YOKOTA EUROPA BV

P.O. BOX 392 NL-1000 AJ AMSTERDAM PHONE 020-6318900 FAX 020-6318908
e-mail: info@impulsetools.com http://www.impulsetools.com

Yokota is a registered trademark of Yokota Corporation, a subsidiary of Hitachi, Ltd.