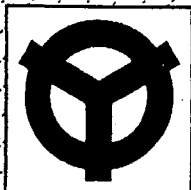
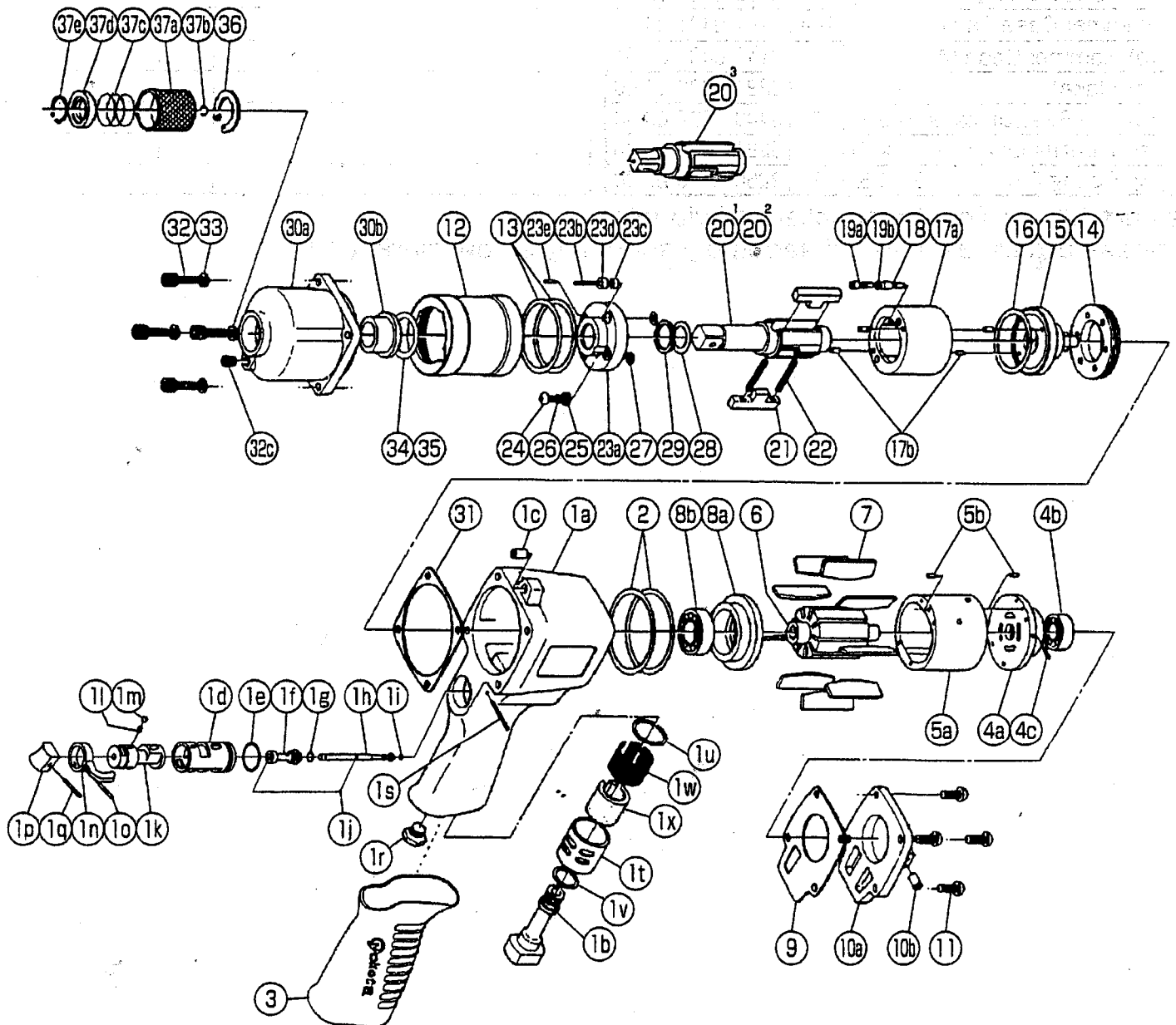


## IMPULSE WRENCH

MODEL (YES.No.)	TOOL No.
Y-90 (04)	0141 0000 0400
Y-90E (04)	0141 0000 0409
Y-90-H (04)	0141 0000 0415
Y-90-D (04)	0141 0000 0406
Y-90E-D(04)	0141 0000 0414

### Exploded View



# YOKOTA EUROPA BV

P.O. BOX 392 NL-1000 AJ AMSTERDAM PHONE 020-5318800 FAX 020-5318808

e-mail info@impulsetools.com http://www.impulsetools.com

Hydraulic Impulse Wrenches, Impact Wrenches, Drills, Grinders, Screw Drivers, Chippers, Scalars, Pumps

# Parts List

No.	Name of Parts	Per Set	Parts No.
1	Motor Case Assy.	1set	0141 0011 02 99
	(a) Motor Case	1	* ↑
	(b) Hose Joint	1	0141 0113 00 00
	(c) Spring Pin (6×10)	1	9250 1082 00 00
	Throttle Bushing Assy.	1set	0167 0104 00 99
	(d) Throttle Bushing	1	* ↑
	(e) O - Ring (N16)	1	9010 4009 00 00
	Throttle Rod Bushing Assy.	1set	0167 0105 00 99
	(f) Throttle Rod Bushing	1	* ↑
	(g) O - Ring (P6)	1	9010 1049 00 00
	Throttle Rod Assy.	1set	0167 0106 01 99
	(h) Throttle Rod	1	* ↑
	(i) O - Ring (N3)	1	9010 4051 00 00
	(j) Snap Ring (ETW-2.8)	1	9040 5008 00 00
	(k) Reverse Valve	1	0141 0005 02 00
	(l) Spring (3×4)	1	8020 1246 00 00
	(m) Ball (1/8)	1	9150 3009 00 00
	(n) Reverse Lever	1	2315 0007 00 00
	(o) Spring Pin (2×12)	1	9250 1015 00 00
	(p) Throttle Knob	1	0094 0153 00 00
	(q) Spring Pin (1.5×14)	1	9250 1005 00 00
	(r) Hex. Oil Plug (PS1/8×6)	1	8230 2002 00 00
	(s) AA Pin (3×23.8)	1	8051 3041 00 00
	(t) Exhaust Cover	1	0141 0016 00 00
	(u) O - Ring (N20)	1	9010 4010 00 00
	(v) O - Ring (N15)	1	9010 4008 00 00
	(w) Silencer Sheet (A)	1	0141 0032 00 01
	(x) Silencer Sheet (B)	1	0141 0032 00 02
2	O - Ring (N46)	2	9010 4032 00 00
3	Rubber Grip	1	0141 0144 00 00
4	Upper Plate Assy.	1set	0141 0303 04 99
	(a) Upper Plate	1	0141 0303 03 00
	(b) Ball Bearing (6900CM)	1	9102 1001 00 00
	(c) AA Pin (2×6.8)	1	8051 3017 00 00
5	Cylinder Assy.	1set	0141 0304 03 99
	(a) Cylinder	1	* ↑
	(b) Pin (2.5×6)	2	8055 1053 00 00
6	Rotor	1	0141 0305 01 00
7	Vane	9	0141 0306 01 00
8	Lower Plate Assy.	1set	0141 0307 04 99
	(a) Lower Plate Assy.	1	0141 0307 03 00
	(b) Ball Bearing (6902CM)	1	9102 1004 00 00
9	S - Packing (A)	1	0141 0003 01 01
10	Motor Case Cover Assy.	1set	0141 0001 01 99
	(a) Motor Case Cover	1	* ↑
	(b) Spring Pin (6×10)	1	9250 1082 00 00
11	Screw (M5×18)	4	8071 1012 00 00
12	Liner Case	1	0141 0422 01 00
13	O - Ring (N42)	2	9010 4018 00 00
14	Liner Cap	1	0141 0423 01 00
15	Liner Upper Plate	1	0141 0424 00 00
16	O - Ring (N36)	1	9010 4015 00 00

No.	Name of Parts	Per Set	Parts No.
17	Liner Assy.	1set	0141 0425 01 99
	(a) Liner	1	* ↑
	(b) AA Pin (3×5)	4	8051 3094 00 00
18	Relief Valve	1	0141 0245 00 00
19	Spring Guide (B) Assy.	1set	0077 0510 00 99
	(a) Spring Guide (B)	1	* ↑
	(b) O - Ring (N2)	1	9010 4001 00 00
20	Main Shaft	1	0141 0614 00 01
21	Blade	2	0141 0719 00 00
22	Spring (4×32)	2	8020 1251 00 00
23	Liner Lower Plate (A) Assy.	1set	0141 0426 01 98
	(a) Liner Lower Plate	1	* ↑
	(b) Hexagon Socket Set Screw (M3×14)	1	9480 2029 00 00
	(c) Nylon Bushing (M3)	1	0260 0431 00 00
	(d) Bushing (M3)	1	0260 0728 00 00
	(e) Spring Pin (3×6)	1	9250 2001 00 00
24	Oil Plug	1	0048 0010 00 00
25	Washer (6.5×8.5×1.1)	1	8040 1073 00 00
26	O - Ring (N4)	1	9010 4021 00 00
27	O - Ring (N5)	1	9010 4033 00 00
28	O - Ring (P16)	1	9010 1015 00 00
29	Back - up Ring (16×20×1.5)	1	9090 1012 00 00
30	Hammer Case Assy.	1set	0141 0401 01 99
	(a) Hammer Case	1	0141 0401 01 00
	(b) Main Shaft Bushing	1	0141 0612 00 00
	(c) Socket Plug (PT1/8)	1	8210 5001 00 00
31	S - Packing (B)	1	0141 0003 01 02
32	Screw (M5×18)	4	8070 3052 00 00
33	Spring Washer (M5)	4	9200 3005 00 00
34	Washer (16.5×22×0.3)	1	8041 5038 00 00
35	Washer (16.5×22×0.5)	1	8041 5039 00 00
Parts for Y-90E			
20 <sup>2</sup>	Main Shaft Assy.(E-type)	1set	0141 0614 01 59
Parts for Y-90-H			
20 <sup>3</sup>	Main Shaft	1	0141 0614 01 51
36	Snap Ring (ISTW-16)	1	9040 4003 00 00
37	Bit Chuck Assy.	1	0141 0414 00 99
	(a) Bit Chuck	1	0141 0414 00 00
	(b) Ball (4mm)	1	9150 1005 00 00
	(c) Spring (18.5×13)	1	8020 1182 00 00
	(d) Spring Washer	1	0141 0419 00 00
	(e) Retaining Ring (15×1)	1	8030 1072 00 00

The part "\*" can not be supplied individually.

Please order it as a unit of assembly shown by arrow mark (↑).

Parts marked with \* may be not used, in some case.