

Parts for Motor Case

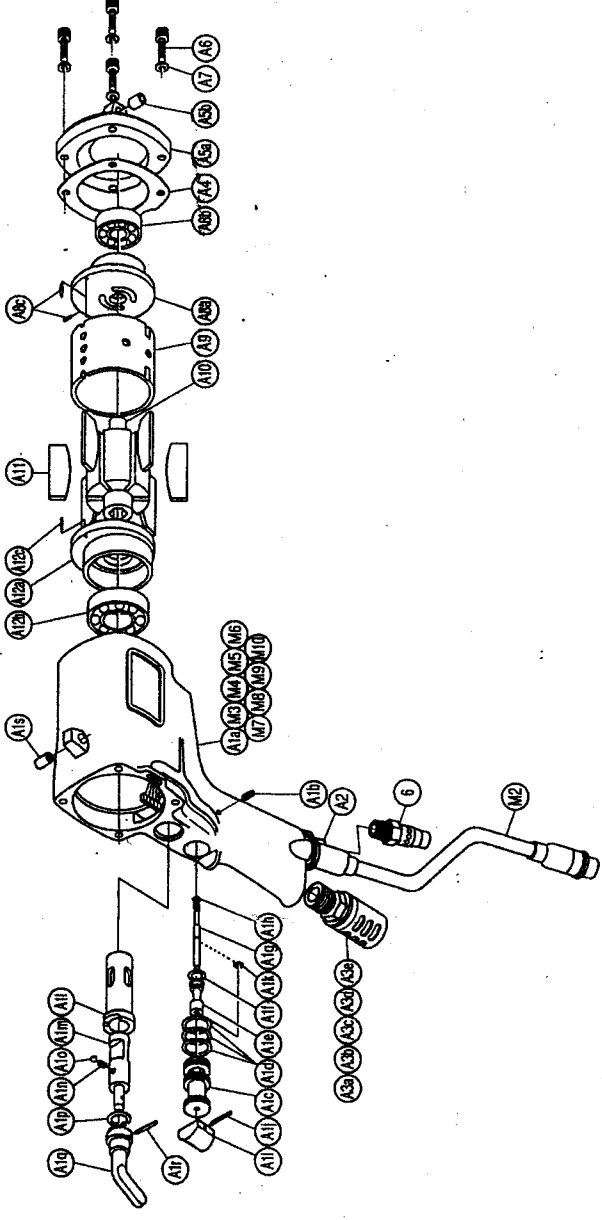
No.	Name of Parts	Per set	Parts No.	No.	Name of Parts	Per set	Parts No.
M	Motor Case Assy.	1 set	0323 0011 02 99	A12	Lower Plate Assy.	1 set	0941 0307 01 99
M1	Motor Case Assy. (1)	1 set	0323 0011 01 67	a)	Lower Plate	1	0941 0307 01 00
A1	Motor Case (B) Assy.	1 set	0323 0011 00 97	b)	Ball Bearing 6004	1	9100 1019 00 00
a)	Motor Case	1	*	c)	S.R.Pin 2X6	1	9250 6002 00 00
b)	Screw M5X8 P=0.8	1	9480 1010 00 00	M2	Holder Assy.	1 set	0407 0717 00 99
Throttle Bushing Assy.	1 set	0229 0104 00 99	M3	Contraction Tube 3'X15	1	9380 5007 00 00	
Throttle Bushing	1	*	M4	Contraction Tube 1.5'X10	4	9380 5008 00 00	
d)O-Ring N15	3	9010 4008 00 00	M5	Micro Connector PM-10	1	8500 2001 00 00	
Throttle Rod Bushing Assy.	1 set	0323 0105 00 99	M6	Socket Connector 170205-1	2	8480 1001 00 00	
e)Throttle Rod Bushing	1	*	M7	Socket Connector 171822-2	1	8470 1001 00 00	
f)O-Ring No.5 (Hs90)	1	9010 3022 00 00	M8	Buzzer Basic Assy.	1	0234 0798 00 98	
Throttle Rod Assy.	1 set	0229 0106 01 99	M9	O-Ring P20	1	9010 1017 00 00	
g)Throttle Rod	1	*	M10	Snap Ring RTW-24	1	9040 1014 00 00	
h)O-Ring N2	1	9010 4001 00 00	i)	Throttle Knob	1	2024 0153 00 00	
j)Throttle Knob	1	9250 1005 00 00	k)	Snap Ring ETW-2.8	1	9040 5008 00 00	
l)Reverse Bushing	1	0229 0004 00 00	m)	Reverse Valve	1	0323 0005 00 00	
n)Spring 4X6 N=3 0.5	1	8020 1022 00 00	o)	Ball M4 S	1	9150 1005 00 00	
p)Snap Ring IRTW-14	1	9040 3004 00 00	q)	Reverse Lever	1	0048 0007 01 00	
r)Spring 4X6 N=3 0.5	1	8020 1022 00 00	s)	S.R.Pin 3X14	1	9250 1049 00 00	
t)Reverse Lever	1	0048 0007 01 00	u)	S.R.Pin 8X10	1	9250 2017 00 00	
v)Snap Ring ETW-2.8	1	9040 5008 00 00	w)	Hose Joint	1	0078 0113 00 00	
x)Reverse Valve	1	0323 0005 00 00	y)	Silencer Assy. PF3/8	1 set	0405 0053 01 99	
z)Spring 4X6 N=3 0.5	1	8020 1022 00 00	a)	Silencer Body PF3/8	1	*	
aa)Reverse Lever	1	0048 0007 01 00	b)	Silencer Cover	1	3048 0081 02 00	
ab)Snap Ring ETW-2.8	1	9040 5008 00 00	c)	Silencer Sheet	1	0405 0032 00 00	
ac)Reverse Valve	1	0323 0005 00 00	d)	Joint Ring	1	1105 0116 00 00	
ad)Spring 4X6 N=3 0.5	1	8020 1022 00 00	e)	O-Ring N20	1	9010 4010 00 00	
ae)Reverse Lever	1	0048 0007 01 00	f)	S-Packing A	1	0323 0003 00 01	
af)Snap Ring ETW-2.8	1	9040 5008 00 00	g)	Motor Case Cover Assy.	1 set	0323 0001 00 99	
ag)Reverse Valve	1	0323 0005 00 00	a)	Motor Case Cover	1	*	
ah)Spring 4X6 N=3 0.5	1	8020 1022 00 00	b)	S.R.Pin 8X10	1	9250 2017 00 00	
ai)Reverse Lever	1	0048 0007 01 00	c)	Hex Bolt M5X18 P=0.8	4	8070 3052 00 00	
aj)Snap Ring ETW-2.8	1	9040 5008 00 00	d)	Spring Washer M5	4	9200 3005 00 00	
ak)Reverse Valve	1	0323 0005 00 00	e)	Upper Plate Assy.	1 set	0941 0303 01 99	
al)Spring 4X6 N=3 0.5	1	8020 1022 00 00	a)	Upper Plate	1	0941 0303 01 00	
am)Reverse Lever	1	0048 0007 01 00	b)	Ball Bearing 6201	1	9100 1021 00 00	
an)Snap Ring ETW-2.8	1	9040 5008 00 00	c)	S.R.Pin 2X6	2	9250 6002 00 00	
ao)Reverse Valve	1	0323 0005 00 00	A9	Cylinder	1	0322 0304 00 00	
ap)Spring 4X6 N=3 0.5	1	8020 1022 00 00	A10	Rotor	1	0322 0305 00 00	
aq)Reverse Lever	1	0048 0007 01 00	A11	Vane	6	0322 0306 01 00	

The part * can not be supplied individually.
So please order it as a unit of assembly shown by arrow mark (↑)



SYSTEM WRENCH

MODELS	(YES/No.)	TOOL No.
YEX-1400	(04)	0323 0000 04 00
YEX-1400-G	(04)	0323 0000 04 11



YOKOTA EUROPE BV
 e-mail info@impulsetools.com <http://www.impulsetools.com>
 P.O. BOX 392 NL-1000 AJ AMSTERDAM PHONE: 020-625 29 53 FAX: 020-625 35 69
 Hydraulic Impulse Wrenches, Impact Wrenches, Drills, Grinders, Screw Drivers, Chippers, Scales, Pumps.

Parts for Liner Case

No.	Name of Parts	Per Set	Parts No.
L	Liner Case Assy.	1set	0323 0422 05 98
L1	Liner Case	1	0323 0422 01 00
L2	O - Ring (N50)	2	9010 4042 00 00
L3	Liner Cap	1	0322 0423 00 00
L4	Liner Upper Plate	1	0322 0424 00 00
L5	O - Ring (N44)	1	9010 4020 00 00
L6	Liner Assy.	1set	0322 0425 03 98
	(a) Liner	1	*
	(b) Pin (3x741~44HRC)	4	8052 1032 00 00
L7	Relief Valve	1	0322 0245 00 00
L8	Spring Guide (B) Assy.	1	0322 0510 00 99
	(a) Spring Guide (B)	1	*
	(b) O - Ring (N3)	1	9010 4025 00 00
L9	Liner Shaft	1	0323 0798 03 00
L10	Blade	2	0322 0719 01 00
L11	Double Spring		
	Spring (2.6x36)	2	8020 1315 00 00
	Spring (4x35.5)	2	8020 1316 00 00
L12	Liner Lower Plate (A) Assy.	1set	0323 0426 04 98
	(a) Liner Lower Plate	1	*
	(b) Nylon Bushing (M4)	1	0261 0431 00 00
	(c) Bushing	1	0261 0726 00 00
	(d) Adjust Bolt	1	0238 0522 01 00
L13	Spring Pin (4x8)	1	9250 2024 00 00
L14	Oil Plug (M4)	1	0048 0010 00 00
L15	Washer (6.5x8.5x1.1)	1	8040 1073 00 00
L16	O - Ring (N4)	1	9010 4021 00 00
L17	O - Ring (2.55x17.8x22.9)	1	9010 6017 00 00
L18	Back-up Ring (18x22.4x0.8)	1	9090 1008 00 00
L19	O - Ring (N6)	2	9010 4026 00 00
1	S-Packing (B)	1	0323 0003 00 02

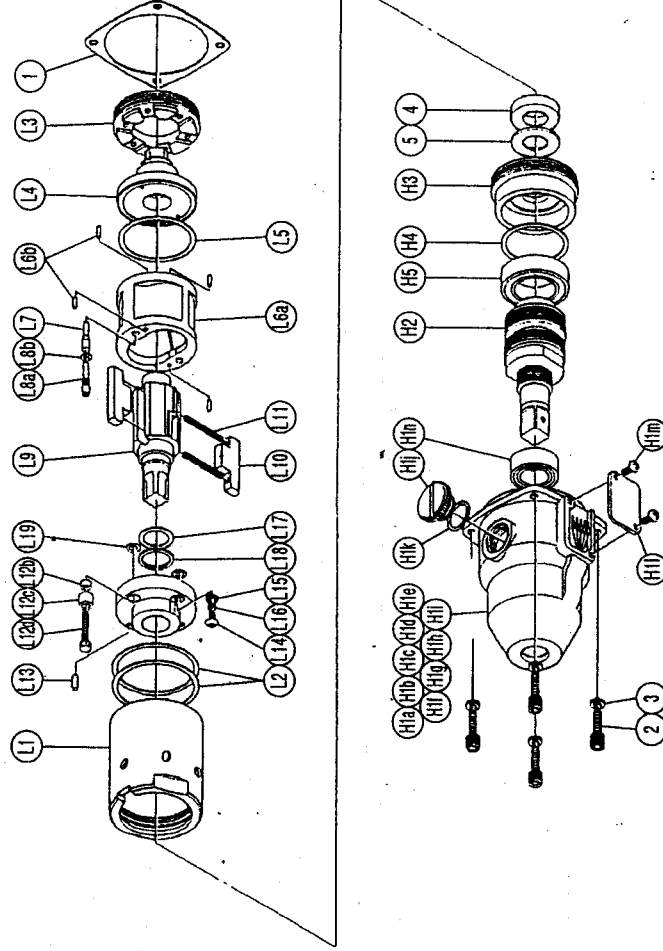
The part "*" can not be supplied individually.
So please order it as a unit of assembly shown by arrow mark (↑).

With built-in torque sensor

2 BLADE SYSTEM WRENCH

MODEL (YES.No.)	TOOL No.
YEX-1400 (04)	0323 0000 0400
YEX-1400-G (04)	0323 0000 0411

Exploded View of Liner Case and Hammer Case



Parts for Hammer Case

No.	Name of Parts	Per Set	Parts No.
H	Hammer Case Assy.	1set	0325 0401 00 99
H1	Hammer Case (A) Assy.	1set	0323 0401 00 98
	(a) Hammer Case	1	*
	(b) Core (A) Assy.	1set	*
	(c) Core (B)	1	*
	(d) Spacer (A)	1	*
	(e) Core (C)	1	*
	(f) Core (D) Assy.	1set	*
	(g) Screw (M4x5 P=0.7)	1	9490 1006 00 00
	(h) Contraction Tube (1.5"x9)	4	9380 5010 00 00
	(i) Micro Connector (OX-202)	4	8500 4001 00 00
	(j) Regulator Cap	1	0323 0204 00 00
	(k) O - Ring (N16)	1	9010 4009 00 00
	(l) Cover Plate	1	0323 0014 00 00
	(m)+Screw (M4x8 P=0.7)	2	9410 2004 00 03
	(n) Ball Bearing (6903ZZ)	1	9100 5025 00 00
H2	Main Shaft Assy.	1set	0326 0614 00 99
H3	Bearing Case	1	0321 0650 00 00
H4	C-Packing (36x41.5x0.1)	1	8010 1166 00 00
H5	Ball Bearing (6905ZZ)	1	9100 5013 00 00
2	Hexagon Bolt (M5x18 P=0.8)	4	8070 3052 00 00
3	Spring Washer (M5)	4	9200 3005 00 00
4	Washer (16.3x30x5.3)	1	8040 6028 00 00
5	Washer (16.3x30x0.5)	1	8041 5019 00 00
6	Touch Joint (1/4-07)	1	9690 0007 00 00
	Standard Accessories		
	TF Pin (2x90)	1	8051 6001 00 00
	Protector	1	0323 0029 00 00

Special Parts for G-version

H'	Hammer Case Assy.	1set	0325 0401 00 95
H'1	Hammer Case (A) Assy.	1set	0323 0401 01 98
	(a) Hammer Case (A)	1	*
	Standard Accessory		
	TF Pin (2x90)	1	8051 6001 00 00

The part "*" can not be supplied individually.
So please order it as a unit of assembly shown by arrow mark (↑).



YOKOTA EUROPA BV

P.O. BOX 392 NL-1000 AJ AMSTERDAM - PHONE 020-531 8800 - FAX 020-531 8809
e-mail: info@impulse-tools.com - http://www.impulse-tools.com
Hydraulic Impact Wrenches, Impact Wrenches, Screw Drivers, Drills, Chippers, Sealers, Pumps