



Parts for Liner Case

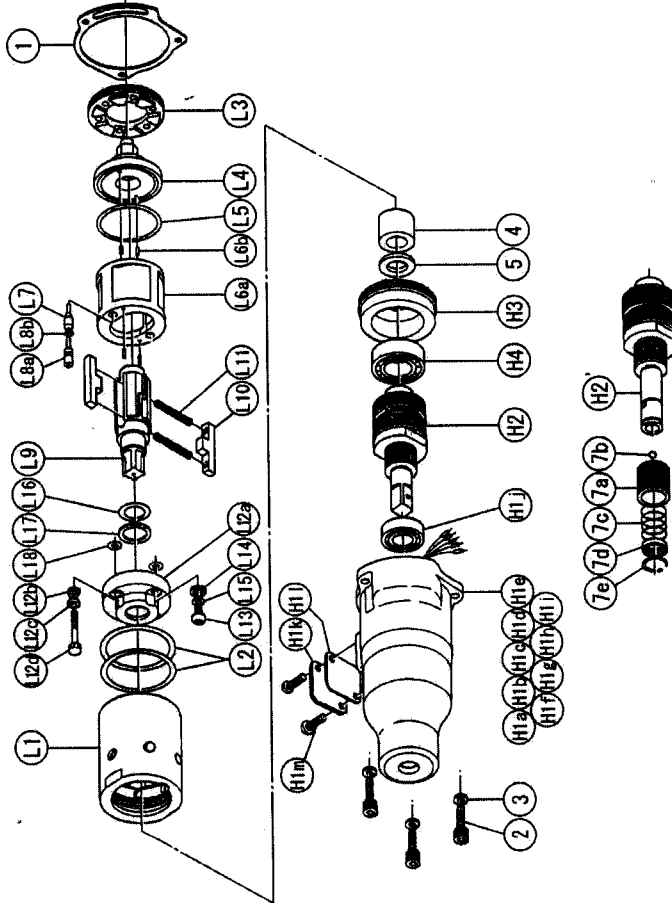
No.	Name of Parts	Per set	Parts No.
L	Liner Case Assy.	1 set	0082 0422 0599
L1	Liner Case	1	0078 0422 00 00
L2	O-Ring N38	2	9010 4016 00 00
L3	Liner Cap	1	0048 0423 00 00
L4	Liner Upper Plate	1	0077 0424 00 00
L5	O-Ring N32	1	9010 4014 00 00
L6	Liner Assy.	1 set	0077 0425 03 99
	a)Liner	1	※ ↑
	b)Pin 3X5 <41-44HRC>	4	8052 1031 00 00
L7	Relief Valve	1	0077 0245 00 00
L8	Spring Guide (B) Assy.	1 set	0077 0510 00 99
	a)Spring Guide B	1	※ ↑
	b)O-Ring N2	1	9010 4001 00 00
L9	Liner Shaft	1	0082 0796 01 00
L10	Blade	2	0077 0719 01 00
L11	Double Spring	2	8020 1310 00 00
	Spring 3.6X29.5	2	8020 1309 00 00
	Spring 2.4X29.5	2	0082 0428 0498
L12	Liner Lower Plate (A) Assy.	1 set	※ ↑
	a)Liner Lower Plate	1	0260 0431 00 00
	b)Nylon Bushing M3	1	0260 0728 00 00
	c)Bushing	1	0082 0522 0200
	d)Adjust Bolt	1	0048 0010 00 00
L13	Oil Plug M4	1	8040 1073 00 00
L14	Washer 6.5X8.5X1.1	1	9010 4021 00 00
L15	O-Ring N4	1	9010 6014 00 00
L16	O-Ring 2.8X12.8X18.4 Hs70*	1	9090 1005 00 00
L17	Back-Up Ring 13X18X0.6	1	9010 4033 00 00
L18	O-Ring N5	2	0131 0003 00 02
	The part S-Packing B	1	

So please order it as a unit of assembly shown by arrow mark (↑).

SYSTEM WRENCH

MODELS (YES/No.)	TOOL No.
YEX-500S (03)	0082 0000 03 00
YEX-500SA (03)	0082 0000 03 01

Exploded View of Liner Case and Hammer Case



Parts For Hammer Case

No.	Name of Parts	Per set	Parts No.
H	Hammer Case Assy.	1 set	0082 0401 02 99
H1	Hammer Case Assy. (1)	1 set	0079 0401 02 69
	a)Hammer Case	1	※ ↑
	b)Core A Assy.	1 set	※ ↑
	c)Core B	1	※ ↑
	d)Spacer A	1	※ ↑
	e)Core C	1	※ ↑
	f)Core D Assy.	1 set	※ ↑
	g)Screw M4X5 P=0.7	1	9480 1006 00 00
	h)Micro Connector OX-202	4	8500 4001 00 00
	i)Contraction Tube 1.5'X9	4	9380 5010 00 00
	j)Ball Bearing 6901ZZ	1	9100 5026 00 00
	k)Cover Plate	1	0131 0014 00 00
	l)S-Packing C	1	0131 0003 00 03
	m)Screw M4X8 P=0.7	2	9460 2002 00 00
H2	Main Shaft Assy.	1 set	0127 0614 00 99
H3	Bearing Case	1	0127 0650 00 00
H4	Ball Bearing 6903ZZ	1	9100 5025 00 00
2	Hex. Bolt M4X14 P=0.7	3	8070 3008 00 00
3	Spring Washer M4	3	9200 3004 00 00
4	Spacer	1	0082 0119 01 00
5	Washer 12.5X21X0.5	1	8041 5033 00 00
6	Touch Joint 1/4-07	1	9690 0007 00 00
	Standard Accessories		
	TF Pin 2X90	1	8051 6001 00 00
	Hanger	1	0004 0017 00 00
	Parts for YEX-500SA <03>		
H'	Hammer Case Assy.	1 set	0082 0401 02 89
H2'	Main Shaft Assy.	1 set	0078 0614 00 89
7	Bit Chuck Assy.	1 set	2057 0414 00 99
	a)Bit Chuck	1	2057 0414 00 00
	b)Ball 1/8 S	1	9150 3009 00 00
	c)Spring 13.5X10	1	8020 1340 00 00
	d)Spring Washer	1	2331 0419 00 00
	e)Retaining Ring 10X1	1	8030 1009 00 00

The part "※" can not be supplied individually. So please order it as a unit of assembly shown by arrow mark (↑).



YOKOTA EUROPE BV

e-mail info@impulsetools.com http://www.impulsetools.com

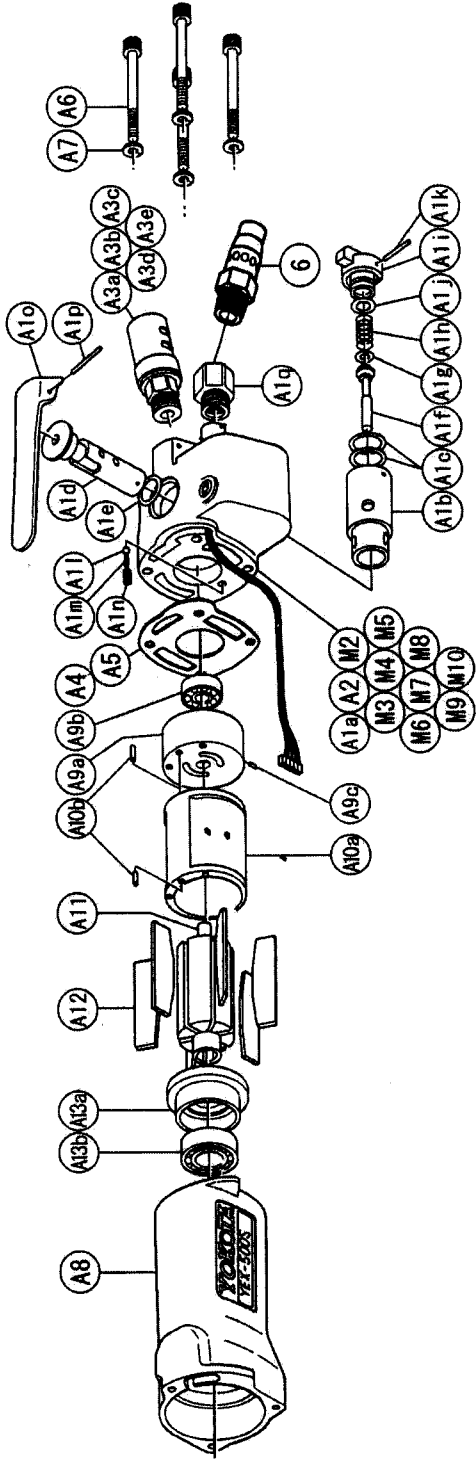
P.O. BOX 362 NL-1000 AJ AMSTERDAM PHONE: 020-625 29 53 FAX: 020-625 35 69

Hydraulic Impulse Wrenches, Impact Wrenches, Drills, Grinders, Screw Drivers, Chippers, Scales, Pumps.




SYSTEM WRENCH

MODELS	(YES/No.)	TOOL No.
YEX-500S	(03)	0082 0000 03 00
YEX-500SA	(03)	0082 0000 03 01



No.	Name of Parts	Per set	Parts No.	Name of Parts	Per set	Parts No.
M1	Motor Case Assy.	1 set	0082 0011 03 99	Lower Plate Assy.	1 set	0051 0307 02 99
	Motor Case Assy. (1)	1 set	0082 0011 01 69	a) Lower Plate	1	0051 0307 02 00
A1	Handle Assy.	1 set	0131 0002 00 99	b) Ball Bearing 6902CM	1	9102 1004 00 00
	Handle A Assy.	1 set	※ ↑	Connector Assy.	1 set	8450 1001 00 99
	a) Handle	1	※ ↑	Contraction Tube 8'X25	1	9380 5006 00 00
	b) Reverse Bushing	1	※ ↑	Contraction Tube 3'X15	1	9380 5007 00 00
	c) O-Ring N15	2	9010 4008 00 00	Contraction Tube 1.5'X10	4	9380 5008 00 00
	Reverse Valve Assy.	1 set	0932 0005 00 99	Micro Connector PM-10	1	8500 2004 00 00
	d) Reverse Valve	1	※ ↑	Buzzer PKB24SP-3816	1	8440 1001 00 00
	e) O-Ring N12	1	9010 4005 00 00	Print Basic A	1	0127 0798 00 01
	Throttle Rod Assy.	1 set	0932 0106 00 99	O-Ring P20	1	9010 1017 00 00
	f) Throttle Rod	1	※ ↑	Snap Ring RTW-24	1	9040 1014 00 00
	g) O-Ring No.3 (Hs90)	1	9010 3021 00 00			
	h) Spring 8X16	1	8020 1066 00 00			
	Reverse Lever Assy.	1 set	0932 0007 00 99			
	i) Reverse Lever	1	※ ↑			
	j) O-Ring P8	1	9010 1006 00 00			
	k) S.R.Pin 2X20	1	9250 1021 00 00			
	l) Ball M3 S	1	9150 1003 00 00			
	m) Spring 3X10 N=7 0.5"	1	8020 1004 00 00			
	n) Screw M4X6 P=0.7	1	9480 2003 00 00			
	o) Throttle Lever	1	0931 0110 00 00			
	p) S.R.Pin 3X25	1	9250 5001 00 00			
	q) Hose Joint	1	0071 0113 00 00			
A2	Socket Plug Pt1/8	1	8210 2001 00 00			
A3	Silencer Assy	1 set	0943 0063 01 99			
	a) Silencer Body	1	※ ↑			
	b) Silencer Cover	1	0931 0081 01 00			
	c) Silencer Sheet	1	0931 0032 00 00			
	d) Joint Ring	1	1105 0116 00 00			
	e) O-Ring N16	1	9010 4009 00 00			
A4	S-Packing A	1	0131 0003 00 01			
A5	S-Packing D	1	0131 0003 00 04			
A6	Hex. Bolt M5X50X16 P=0.8	4	8070 3122 00 00			
A7	Spring Washer M5	4	9200 3005 00 00			
A8	Motor Case	1	0131 0011 00 00			
A9	Upper Plate Assy.	1 set	0082 0303 01 99			
	a) Upper Plate	1	0082 0303 01 00			
	b) Ball Bearing 607VMC2	1	9102 4001 00 00			
	c) S.R.Pin 2X6	1	9250 1011 00 00			
A10	Cylinder Assy.	1 set	0051 0304 02 99			
	a) Cylinder	1	※ ↑			
	b) S.R.Pin 3X8	2	9250 1045 00 00			
A11	Rotor	1	0051 0305 01 00			
A12	Vane	6	0082 0306 00 00			



YOKOTA EUROPE BV
 e-mail info@impulsetools.com http://www.impulsetools.com
 P.O. BOX 392 NL-1000 AJ AMSTERDAM PHONE: 020-625 29 53 FAX: 020-625 35 69
 Hydraulic Impulse Wrenches, Impact Wrenches, Drills, Grinders, Screw Drivers, Chippers, Sealers, Pumps.

The part "※" can not be supplied individually.
 So please order it as a unit of assembly
 shown by arrow mark (↑).
 008203-Y0301