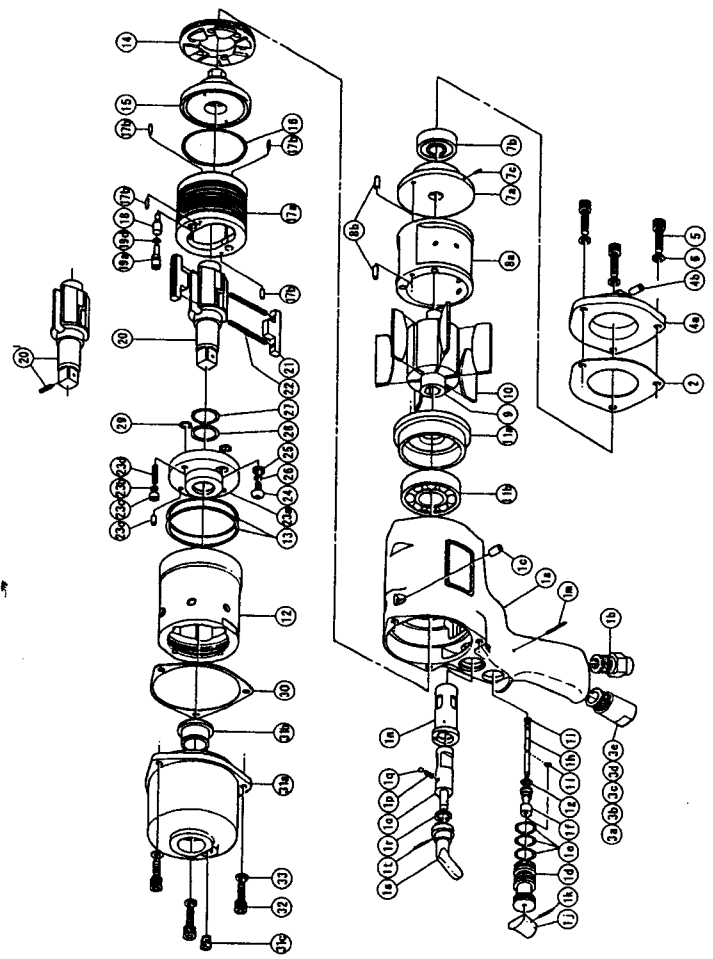


MODELS (YES/No.)	TOOL No.
YX-1900 (06)	0320 0000 06 00
YX-1900E (06)	0320 0000 06 04

IMPULSE WRENCH



YOKOTA EUROPE BV

e-mail info@impulsetools.com <http://www.impulsetools.com>

P.O. BOX 392 NL-1000 AJ AMSTERDAM PHONE: 020-625 29 53 FAX: 020-625 35 69

Hydraulic Impulse Wrenches, Impact Wrenches, Drills, Grinders, Screw Drivers, Chippers, Scales, Pumps.

PARTS LIST

No.	Name of Parts	Per set	Parts No.	No.	Name of Parts	Per set	Parts No.
1	Motor Case Assy.	1 set	0320 0011 0199	12	Liner Case	1	0406 0422 0000
	a)Motor Case	1	※ ↑	13	O-Ring N55	2	9010 4036 0000
	b)Hose Joint	1	0237 0113 0000	14	Liner Cap	1	0229 0423 0000
	c)S.R.Pin 6X10	1	9250 2012 0000	15	Liner Upper Plate	1	0320 0424 0000
	Throttle Bushing Assy.	1 set	0229 0104 0099	16	O-Ring N48	1	9010 4035 0000
	d)Throttle Bushing	1	※ ↑	17	Liner Assy.	1 set	0320 0425 0399
	e)O-Ring N15	3	9010 4008 0000		a)Liner	1	※ ↑
	Throttle Rod Bushing Assy.	1 set	0323 0105 0099		b)Pin 3.5X7 <41-44HRC>	4	8052 1033 0000
	f)Throttle Rod Bushing	1	※ ↑	18	Relief Valve	1	0320 0245 0000
	g)O-Ring No.5 (Hs90)	1	9010 3022 0000	19	Spring Guide (B) Assy.	1 set	0320 0510 0099
	Throttle Rod Assy.	1 set	0229 0106 0199		a)Spring Guide B	1	※ ↑
	h)Throttle Rod	1	※ ↑		b)O-Ring P3	1	9010 1001 0000
	i)O-Ring N2	1	9010 4001 0000	20	Main Shaft 1/2	1	0320 0614 0501
	j)Throttle Knob	1	2024 0153 0000	21	Blade	2	0320 0719 0100
	k)S.R.Pin 1.5X14	1	9250 1005 0000	22	Spring 4.6X41 N=30	2	8020 1215 0000
	l)Snap Ring ETW-2.8	1	9040 5008 0000	23	Liner Lower Plate (A) Assy.	1 set	0406 0426 0398
	m)Slotted Pin G 3X24	1	8410 6024 0000		a)Liner Lower Plate	1	※ ↑
	n)Reverse Bushing	1	0229 0004 0000		b)Nylon Bushing M5	1	0406 0731 0200
	o)Reverse Valve	1	0320 0005 0000		c)Bushing	1	0406 0428 0000
	p)Spring 4X6 N=3 0.5"	1	8020 1022 0000		d)Screw M5X16	1	9480 2025 0000
	q)Ball M4 S	1	9150 1005 0000		e)S.R.Pin 4X8	1	9250 2024 0000
	r)Snap Ring IRTW-14	1	9040 3004 0000	24	Hex Button Bolt M5X8 P=0.8	1	8071 1011 0000
	s)Reverse Lever	1	0048 0007 0100	25	Washer 7.5X9.5X1.2	1	8040 1127 0000
	t)S.R.Pin 3X14	1	9250 1049 0000	26	O-Ring N5	1	9010 4033 0000
2	S-Packing A	1	0229 0003 0001	27	O-Ring 2.55X17.8X22.9 (Hs70)	1	9010 6017 0000
3	Silencer Assy. PF3/8	1 set	3048 0053 0299	28	Back-Up Ring 18X22.4X0.8	1	9090 1006 0000
	a)Silencer Body PF3/8	1	※ ↑	29	O-Ring N8 <Hs90>	2	9010 4057 0000
	b)Silencer Cover	1	3048 0081 0200	30	S-Packing B	1	0229 0003 0002
	c)Silencer Sheet	1	3048 0032 0000	31	Hammer Case Assy.	1 set	0320 0401 0199
	d)Joint Ring	1	1105 0116 0000		a)Hammer Case	1	0320 0401 0100
	e)O-Ring N20	1	9010 4010 0000		b)Main Shaft Bushing	1	0229 0612 0000
4	Motor Case Cover Assy.	1 set	0229 0001 0099		c)Socket Plug Pt1/8	1	8210 5001 0000
	a)Motor Case Cover	1	※ ↑	32	Hex. Bolt M6X18	3	8070 3033 0000
	b)S.R.Pin 6X10	1	9250 1082 0000	33	Spring Washer M6	3	9200 3006 0000
5	Hex. Bolt M6X18	3	8070 3033 0000		Standard Accessories		
6	Spring Washer M6	3	9200 3006 0000		Touch Joint 1/4-02	1	9690 0002 0000
7	Upper Plate Assy.	1 set	0313 0303 0199		Hexagon Wrench H2.5X70X70	1	9610 1014 0000
	a)Upper Plate	1	0313 0303 0100		Hexagon Wrench H5	1	9610 1006 0000
	b)Ball Bearing 6201	1	9100 1021 0000		Parts for YX-1900E <06>		
	c)S.R.Pin 3X6	1	9250 1043 0000	20	Main Shaft 1/2 Assy.	1 set	0320 0614 0659
8	Cylinder Assy.	1 set	0229 0304 0199				
	a)Cylinder	1	※ ↑				
	b)S.R.Pin 4X10	2	9250 1066 0000				
9	Rotor	1	0229 0305 0000				
10	Vane	6	0320 0306 0000				
11	Lower Plate Assy.	1 set	0229 0307 0199				
	a)Lower Plate	1	0229 0307 0100				
	b)Ball Bearing 6204	1	9100 1024 0000				

The part "※" can not be supplied individually.
So please order it as a unit of assembly
shown by arrow mark (↑).