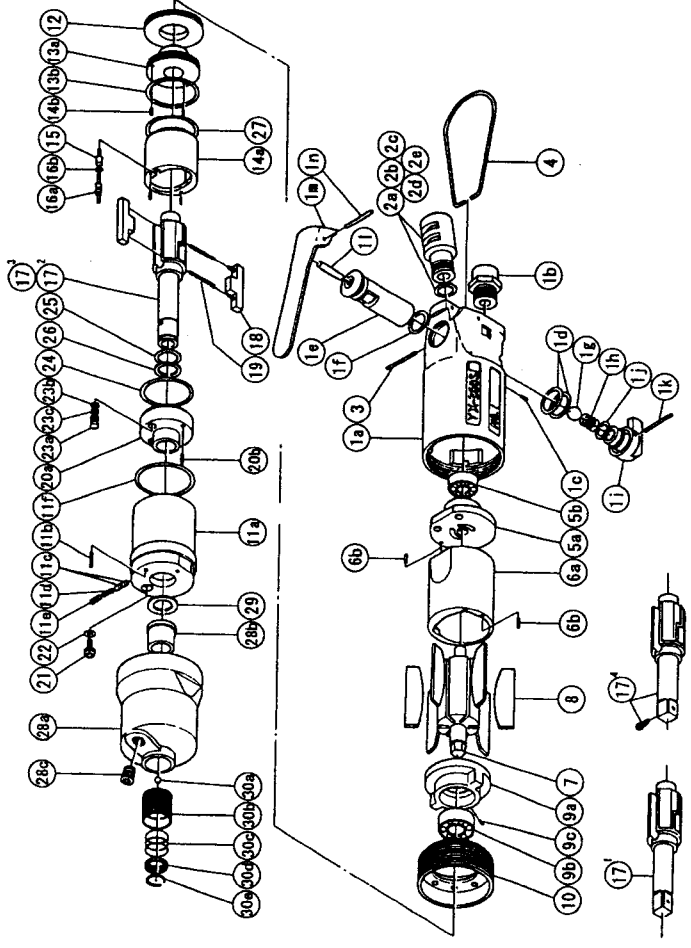




IMPULSE WRENCH

MODELS	(YES/NO)	TOOL No.
YX-380S	(05)	0087 0000 05 00
YX-380SA	(05)	0087 0000 05 01
YX-380SB	(05)	0870 0000 05 02
YX-380SE	(05)	0087 0000 05 04



PARTS LIST

No.	Name of Parts	Per set	Parts No.	No.	Name of Parts	Per set	Parts No.
1	Motor Case Assy.	1 set	0087 0011 0299	15	Relief Valve	1	0086 0245 0000
	a) Motor Case B	1	※ ↑	16	Spring Guide (B) Assy.	1 set	0086 0510 0099
	b) Hose Joint	1	0237 0113 0000		a) Spring Guide B	1	※ ↑
	c) S.R.Pin 2X5	1	9250 1010 0000		b) O-Ring 0.7X2X3.4	1	9010 6020 0000
	d) O-Ring N15	2	9010 4008 0000	17	Main Shaft 3/8	1	0086 0614 0401
	Reverse Valve Assy.	1 set	0080 0005 0099	18	Blade	2	0086 0719 0300
	e) Reverse Valve	1	※ ↑	19	Spring 3.4X22.7	2	8020 1253 0000
	f) O-Ring N12.5	1	9010 4006 0000	20	Liner Lower Plate Assy.	1 set	0135 0426 0099
	g) Ball 5/16 R	1	9150 4002 0000		a) Liner Lower Plate	1	※ ↑
	h) Spring 8X16	1	8020 1066 0000	21	S.R.Pin 3X8	1	9250 2022 0000
	Reverse Lever Assy.	1 set	0084 0007 0099		b) Oil Plug	1	0081 0010 0100
	i) Reverse Lever	1	※ ↑	22	O-Ring N3	1	9010 4025 0000
	j) O-Ring P8	1	9010 1006 0000	23	Oil Stop Cap Assy.	1 set	0081 0602 0099
	k) S.R.Pin 2X20	1	9250 1021 0000		a) Oil Stop Cap	1	※ ↑
	l) AA Pin 4X21.8	1	8051 3057 0000		b) O-Ring N2	1	9010 4001 0000
	m) Throttle Lever	1	0931 0110 0000	24	c) Back-Up Ring	1	9090 2001 0000
2	n) S.R.Pin 3X25	1	9250 5001 0000	25	O-Ring 1X29.2X31.2	1	9010 6022 0000
	Silencer Assy.	1 set	0081 0053 0099	26	O-Ring 2.3X11.8X16.4	1	9010 6019 0000
	a) Silencer	1	※ ↑	27	Back-Up Ring 12X16X0.8	1	9090 1010 0000
	b) O-Ring N10	1	9010 4004 0000	28	O-Ring 1.3X28.7X31.3	1	9010 6010 0000
	c) Silencer Sheet B	1	0095 0032 0002		Hammer Case Assy.	1 set	0086 0401 0099
	d) Silencer Cap	1	2306 0084 0000		a) Hammer Case	1	0086 0401 0000
	e) Snap Ring RTW-14	1	9040 1006 0000		b) Main Shaft Bushing	1	0081 0612 0000
3	S.R.Pin 3X16	1	9250 1050 0000	29	c) Socket Plug Pct1/8	1	8210 5001 0000
4	Hanger	1	0004 0017 0000	29	Washer 12.5X18X0.5	1	8041 5011 0000
5	Upper Plate Assy.	1 set	0080 0303 0299	29	Washer 12.5X18X1	1	8041 5021 0000
	a) Upper Plate	1	0080 0303 0200		Standard Accessories		
	b) Ball Bearing 607	1	9100 1003 0000		Universal Air Joint 1/4	1	9690 0015 0000
6	Cylinder Assy.	1 set	0087 0304 0199		Hexagon Wrench H1.5X65X65	1	9610 1012 0000
	a) Cylinder	1	※ ↑		Hexagon Wrench H5	1	9610 1006 0000
	b) S.R.Pin 2X6	2	9250 1011 0000		Parts for YX-380SA <05> * YX-380SB <05>		
7	Rotor	1	0086 0305 0000	17	2 Main Shaft	1	0086 0614 0351
8	Vane	6	0086 0306 0100	17	3 Main Shaft B	1	0086 0614 0352
9	Lower Plate Assy.	1 set	0086 0307 0199	30	Bit Chuck Assy.	1 set	2057 0414 0099
	a) Lower Plate	1	0086 0307 0100		b) Bit Chuck	1	2057 0414 0000
	b) Ball Bearing 6900	1	9100 1046 0000		b) Ball 1/8 S	1	9150 3009 0000
	c) Pin 2.5X6	1	8055 1053 0000		c) Spring 13.5X10	1	8020 1340 0000
10	Lower Plate Spacer	1	0086 0311 0100		d) Spring Washer	1	2331 0419 0000
11	Liner Case (A) Assy.	1 set	0086 0422 0398		e) Retaining Ring 10X1	1	8030 1009 0000
	a) Liner Case	1	※ ↑		Parts for YX-380SE <05>		
	b) Screw M3X8 P=0.5	1	9480 2024 0000	17	4 Main Shaft 3/8 Assy.	1 set	0086 0614 0659
	c) Rubber Plate	2	0259 0047 0000				
	d) Spring 3X5	1	8020 1288 0000				
	e) Screw M4X4	1	9480 2031 0000				
	f) O-Ring N32	1	9010 4014 0000				
12	Liner Cap	1	0086 0423 0000				
13	Liner Upper Plate Assy.	1 set	0135 0424 0199				
	a) Liner Upper Plate	1	※ ↑				
	b) O-Ring N28	1	9010 4029 0000				
14	Liner Assy.	1 set	0135 0425 0199				
	a) Liner	1	※ ↑				
	b) Pin 2.5X6 <41-44HRC>	4	8052 1030 0000				

The part "※" can not be supplied individually.
 So please order it as a unit of assembly shown by arrow mark (↑).
 ★ marked parts; use one of them.



YOKOTA EUROPE BV
 e-mail info@impulsetools.com http://www.impulsetools.com
 P.O. BOX 382 NL-1000 AJ AMSTERDAM PHONE: 020-625 29 53 FAX: 020-625 35 69
 Hydraulic Impulse Wrenches, Impact Wrenches, Drills, Grinders, Screw Drivers, Chippers, Scales, Pumps.