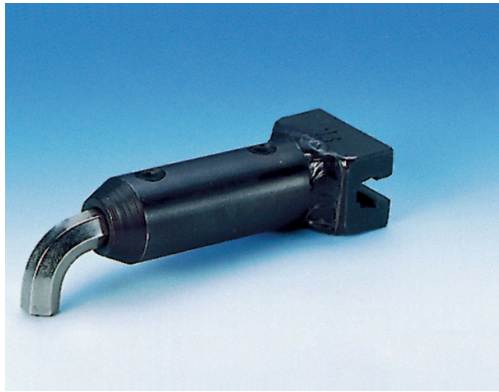




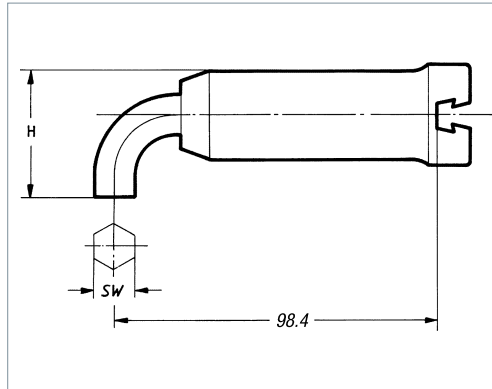
Interchangeable Dovetail Heads – Special Hex Drive



Dovetail tool attachment with rigid hexagon drive for screws with hexagon socket head ('Allen'). Special version with long centre distance (98.4 mm).

Recommended for use on Sturtevant Richmond preset click-type torque wrenches of the LTC, BLT or SLTC / SLTC-FM series.

Note: Other spanner widths or other special designs are available on request.



- ▶ Similar to DIN 911.
- ▶ 6-Point force transmission.
- ▶ SR dovetail connector with outstanding rigidity and wear resistance.
- ▶ Cast Alloy Steel, black finished / partially chrome-plated.
- ▶ Centre Line 98.4 mm (3 7/8 inch).
- ▶ Recommended for use with preset Dovetail click-type torque wrenches from the
 - ✓ Series LTC
 - ✓ Series BLT
 - ✓ Series SLTC
 - ✓ Series SLTC-FM

INFO

The term '**Common Centre Line**' means the distance from the base of the dovetail connector to the center of the rotary axis in the interchangeable head. (see p. 6)

INFO

Interchangeable heads with the same centre line can be interchanged without having to reset or re-adjust the torque wrench.

However, when interchanging heads with different centre lines, the torque wrench must be reset resp. re-adjusted each time!



Each SR dovetail head fits on any SR dovetail wrench.



The SR dovetail profile is always the same.

S-HD

Model	Item No.	A/F mm	max. N·m	—	H	—	—
S-HD 12 MM	R712385	12	360	—	39	—	—
S-HD 14 MM	R712319	14	450	—	49	—	—
S-HD 17 MM	R712386	17	590	—	63	—	—
S-HD 19 MM	R712453	19	600	—	70	—	—



ZEMO
www.zemo-tools.de

