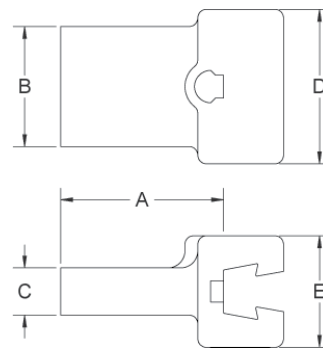
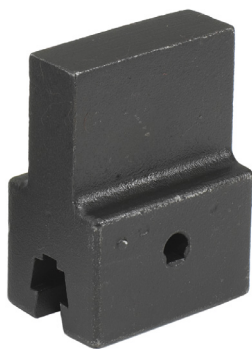


## Interchangeable Dovetail Heads – Adaptors



The STA tooling adaptor is ideal, when you need to make a custom head and wish to use it with an SR interchangeable head torque wrench. When the application requires a special head configuration the STA-Series adaptors permit fabrication of a custom head specially meeting the requirements of the application. Each head has the female dovetail connector required to fit SR interchangeable head torque wrenches.

- ▶ Standard Tooling Adaptor for manufacturing of custom heads.
- ▶ SR dovetail attachment connector with outstanding rigidity and wear resistance.
- ▶ Made from heat treated 4140 alloy steel, black finished.
- ▶ On request we can supply special tool heads according to drawing and/or samples.

*When creating custom heads to use with micrometer adjustable torque wrenches (CCM series tools), it is critical that the common centerline length be correct, or the tool will not apply the indicated torque. When fabricating special heads to use with CCM-series torque wrenches other than the CCM-300 (ft) and the CCM-400 (ft), the 1 7/16" common centerline length must be maintained. When fabricating special heads to use with the CCM-300 and CCM-400, a 3 7/8" common centerline length must be maintained.*

**INFO**

### STA

Model	Item No.	max. N-m	Dimensions (mm)				
			A	B	C	D	E
STA-1	R819901	181	34.9	14.3	6.4	19.1	17.5
STA-2	R819902	282	41.3	22.2	8.7	28.6	20.6
STA-3	R809917	542	50.8	38.1	12.7	38.1	25.4



SR adapter '**Crowfoot**' for using interchangeable dovetail attachments on torque wrenches with square drive, e.g. 'Flat Beam'. However, the lever arm must be re-determined in order to calculate the torque achieved.

- ▶ Always mount in line with the flat bar!
- ▶ If combined with a short SR interchangeable head, centre line = 76.2 mm.
- ▶ Item No. R850653 = SRA-3/8.
- ▶ Item No. R850655 = SRA-1/2.



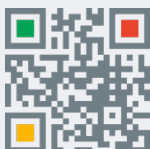
SR adapter '**Round Style**' for the use of interchangeable attachments with round connection on dovetail clicker wrenches.

- ▶ Use only with preset wrench from the LTC, SLTC or SLTC-FM series.
- ▶ Always set the torque with the tool head and adapter fitted!
- ▶ Item No. R853021 = BAJ for Type „J“.
- ▶ Item No. R853022 = BAY for Type „Y“.



SR adapter '**DIN**' for the use of interchangeable insert tools with rectangular connection S9 / S14 on dovetail clicker wrenches.

- ▶ Only use with preset wrenches from the LTC, SLTC or SLTC-FM series.
- ▶ Always set the torque with the tool head and adapter fitted!
- ▶ Item No. R819136 = SR2DIN 9×12 mm.
- ▶ Item No. R819137 = SR2DIN 14×18 mm.



Further  
info on our  
website.  
24/7