

Interchangeable Heads – Open End "Slim Profile"



- ▶ Significantly thinner "C" than standard open-end heads
- ▶ 15° opening offset
- ▶ SR dovetail tool attachment with outstanding flexural rigidity and wear resistance
- ▶ **One-piece cast** tool steel alloy, black finished
- ▶ Centre distance see tables below
- ▶ Suitable for dovetail torque wrenches

Some bolted joints come with their own unique set of challenges. Tight access is near the top of the list. SR has the solution.

The new industrially manufactured **Slim Profile Head (SPH)** open end heads from Sturtevant Richmond are lighter and slimmer. The difference to the common open-end heads lies in the thickness (dimension 'C'). The time-consuming production of special welded attachments is no longer necessary.

These interchangeable heads from Sturtevant Richmond are also cast from a single piece of tool steel alloy, so that a precisely consistent centre distance is achieved.



INFO
Sturtevant Richmond's micrometer and digital torque wrenches up to 200 Nm (1800i / 150 ft) capacity are designed for interchangeable heads with 36.5 mm (1 7/16") centre line; above 200 Nm capacity these torque wrenches are designed for interchangeable heads with 98.4 mm (3 7/8") centre line.
Otherwise, the scaling must not be used due to the deviating lever length.

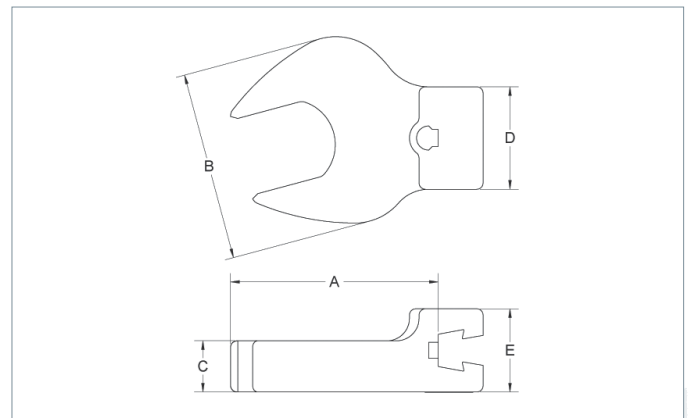
INFO
Dovetail tool heads with the same centre distance can be interchanged without having to re-adjust the torque wrench.
However, when changing heads with different centre distances, the torque must be re-adjusted each time!

OE SPH – Centre Line 1 7/16" (36.5 mm)

Model	Item No.	A/F mm	max. N-m	Dimensions mm				
				A	B	C	D	E
OE-13 SPH	R853912	13	35	45.6	28.6	5.9	22.2	17.5
OE-17 SPH	R853913	17	25	48.4	27.7	5.5	22.2	17.5
OE-19 SPH	R853871	19	45	47.5	40.0	4.4	25.4	20.6
OE-22 SPH	R853872	22	38	48.8	35.2	6.7	31.8	20.6
OE-24 SPH	R853873	24	71	49.6	42.5	6.4	31.8	20.6
OE-27 SPH	R853874	27	100	50.8	44.5	7.4	31.8	20.6
OE-30 SPH	R853875	30	103	52.1	48.0	7.5	31.8	20.6
OE-32 SPH	R853914	32	103	59.1	50.5	10.7	31.8	20.6

OE SPH – Centre Line 3 7/8" (98.4 mm)

Model	Item No.	A/F mm	max. N-m	Dimensions mm				
				A	B	C	D	E
OE-36 SPH	R853876	36	152	118.0	57.8	10.0	38.1	22.4
OE-41 SPH	R853877	41	260	120.0	68.5	9.7	38.1	22.4
OE-50 SPH	R853923	50	275	124.0	85.9	11.0	38.1	22.4



Further info on our website.
24/7