

# Micrometer Adjustable Torque Wrench – CCM

*Upgraded Design: As of September 2016 equipped with rugged knurl grip and improved lock mechanism.*



The SR dovetail connects with all of SR's interchangeable heads



## Service Clicker Wrench with Micrometer Scale

The Sturtevant Richmond micrometer adjustable clicker torque wrench **CCM** series is the kind of tool companies want in their assembly processes. Accurate, reliable, and rugged, this wrench is the must have choice for companies focused on quality and low cost of ownership.

**Fast adjustment:** These wrenches need the fewest number of rotations to move up and down the scale.

The SR dovetail connects with all of our interchangeable heads. Every one of our interchangeable heads fits on every one of our wrenches. No need to buy multiple wrenches and heads to cover all fastener sizes within a given torque range.

**Error Proofing By Design:** Spring tension on these wrenches can be reduced without the wrench falling out of tolerance.

The strong dimensioned torque spring is the very heart of this outstanding wrench. When the set torque is reached, the spring is squeezed slightly, and the hardwearing pawl releases the tool tang.

**Error Proofing By Guidance:** Strong audible and tactile impulse occurs when set torque value is achieved.

The SR line of Micrometer Adjustable Interchangeable Head Torque Wrenches are designed to retain accuracy longer, have greater repeatability, and still be in service long after other wrenches have failed. They are available in both Imperial and SI units of measure.

- ▶ Accuracy of  $\pm 4\%$  of Indicated Value from 20% to 100% of the rated capacity.
- ▶ This meets or exceeds requirements of **ASME B107.300-2010** and **EN ISO 6789**
- ▶ Oil and chemical resistant knurled aluminium handle.
- ▶ SR dovetail interchangeable head mount with superior wear resistance.
- ▶ Thick-walled flat profile provides high bending stiffness and long-term stability .
- ▶ Locking mechanism prevents unintended torque adjustment.
- ▶ Incl. traceable **ISO/IEC 17025** calibration certificate.



Adjust the torque ...



... and lock securely.

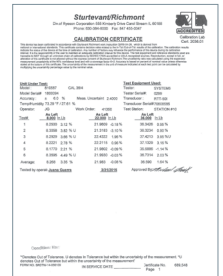
*Formerly version with neoprene handle optionally convertible to metal grip. Ask for your "Knurl Grip Kit".*

**INFO**

**NATO approval (NSN)**

» CCM-6NM	= 5120-01-659-8094
» CCM-20NM	= 5120-01-525-9138
» CCM-100NM	= 5120-01-668-3166
» CCM-200NM	= 5120-01-668-3169
» CCM-400NM	= 5120-01-282-3170

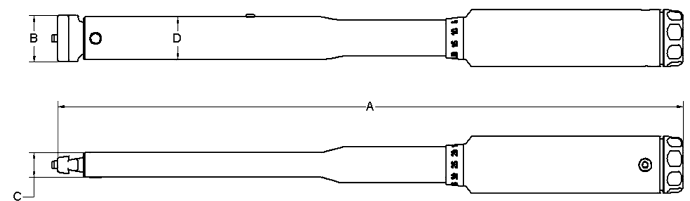
**INFO**



Incl. free ISO/IEC 17025 Calibration Certificate

*Many other models available with scaling in imperial units in inch-pounds (lbf-in) and foot-pounds (lbf-ft).*

**INFO**



## CCM (MG)

SI-Model	Part No. (Metal Grip)	Torque Range		Graduation N-m	Weight kg	Dimensions (mm)			
		N-m				A	B	C	D
CCM 6NM <sup>1)</sup>	R 869784	1.2 - 6		0.1	0.43	229	19.1	12.7	23.8
CCM 20NM <sup>1)</sup>	R 869785	4 - 20		0.2	0.44	229	19.1	12.7	23.8
CCM 100NM <sup>1)</sup>	R 869786	20 - 100		0.5	0.62	329	25.4	12.7	23.8
CCM 200NM <sup>1)</sup>	R 869787	40 - 200		1.0	0.77	413	28.6	12.7	23.8
CCM 400NM <sup>2)</sup>	R 810788	80 - 400		2.5	2.9	660	44.5	15.9	50.8
CCM 600NM <sup>2)</sup>	R 810794	120 - 600		5.0	3.7	913	44.5	15.9	50.8



Further info on our website. 24/7

<sup>1)</sup> Calibrated for interchangeable heads with 1 7/16" (36.5 mm) common centerline.  
<sup>2)</sup> Calibrated for interchangeable heads with 3 7/8" (98.4 mm) common centerline.  
 In case of using differing center lines the scaling must not be used because of deviating lever length.