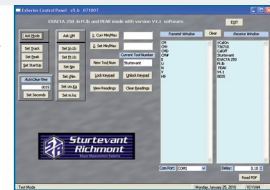


Digital Torque Wrench – Exacta®2



Option: Free software
'ExaWin' for convenient
programming on PC.



Dovetail with Spring/Pin vs.
Dovetail Quick Change (QC).

Sturtevant Richmond's Exacta®2 series sets a new standard for digital torque wrench performance in assembly, maintenance and auditing. Better still, this new design as robust as it is accurate and reliable. The three modes of operation onboard permit use in almost every circumstance. Programmable limits with visual notification. Supplementing the visual information are audible prompts from a beeper. You'll always know when the torque is right. The Residual mode assists the user in determining retained torque on a joint.

Exacta®2 has a Yellow/Green/Red illumination system to guide you as you use the wrench. The display and a raised lens on the back of the wrench both illuminate when each significant torque value is reached. An LED provides a Yellow/Orange light as you approach the minimum torque specification. The light turns Green when you reach the minimum torque, and remains green until you either stop pulling on the wrench or the maximum torque specification is attained. If you overtorque, it turns bright Red to let you know. Just pull to Green!

Error Proofing By Guidance: Supplementing the visual information is audible prompts from a beeper. You'll always know when the torque is right!

Exacta®2 comes with a serial cable for communication with a PC, and can download readings as they are taken, or in a batch mode! The readings can be saved as a text file and imported by almost any statistical or spreadsheet software. This is an invaluable aid when performing process design and process analysis!

- Bi-directional accuracy of $\pm 1\%$ of Indicated Value from 20% to 100% of capacity in Track and Peak modes .
- Meets or exceeds requirements of **ASME B107.300-2010** and **ISO 6789**.
- Three modes of operation – Track, Peak, and Residual.
- Simple front panel programming via four keyswitches.
- Large, bright display can be read at arms length, even in shadow.
- Yellow/Green/Red color scheme informs operator of tightening status.
- Audible prompts from a beeper supplement visual information.
- 999 memory locations can be accessed, reviewed, uploaded and printed.
- Ships in a custom, blow-molded plastic case to protect the wrench.
- FREE certification from ISO/IEC 17025 Accredited Calibration Laboratory!
- Uses four (4) AA 1.2V **NiMH** rechargeable batteries (IEC-HR6).



- **Yellow** = lower torque limit is met, target will soon be achieved.
- **Green** = target torque is achieved. Stop applying force.
- **Red** = upper torque limit exceeded! Loosen fastener and retorque.

Free **ExaWin** **INFO**
software permits
downloading max
and min torque limits,
units of measure, and
other key operating
functions directly from
your PC.

Exacta®2

Genauigkeit $\pm 1\%$

Model	Item No.	Torque Range*			Length mm	Weight kg	Head / Tang
		N·m	lbf·ft	lbf·in			
Exacta2 – 25	R10530	7 - 34	5 - 25	60 - 300	409	1.27	Dovetail w Pin
Exacta2 – 75	R10531	20 - 101	15 - 75	180 - 900	493	1.36	Dovetail w Pin
Exacta2 – 150	R10532	41 - 203	30 - 150	360 - 1800	546	1.41	Dovetail w Pin
Exacta2 – 250	R10536	68 - 339	50 - 250	600 - 3000	587	1.7	Dovetail w Pin
Exacta2 – 400	R10535	108 - 542	80 - 400	960 - 4800	894	3.5	Dovetail w Pin
Exacta2 – 250R	R10533	68 - 339	50 - 250	600 - 3000	640	1.9	Square Drive 1/2" Ratchet
Exacta2 – 400R	R10537	108 - 542	80 - 400	960 - 4800	973	4.1	Square Drive 3/4" Ratchet
Exacta2 – 600R	R10534	163 - 813	120 - 600	1440 - 7200	1516	5.9	Square Drive 3/4" Ratchet
Exacta2 – 25 QC	R10521	7 - 34	5 - 25	60 - 300	409	1.27	Dovetail Quick Change
Exacta2 – 75 QC	R10522	20 - 101	15 - 75	180 - 900	493	1.36	Dovetail Quick Change
Exacta2 – 150 QC	R10523	41 - 203	30 - 150	360 - 1800	546	1.41	Dovetail Quick Change
Exacta2 – 250 QC	R10518	68 - 339	50 - 250	600 - 3000	587	1.7	Dovetail Quick Change

