

Marking Torque Wrench – MPCL / MCSP

Fig.: MCSP50NX15D wrench with MSH15DX14 head and red marker



Marking Clicker Torque Wrench with Spanner Head

The MCSP is a clicker type interchangeable open end head marking torque wrench. It automatically marks a corner of the nut (or bolt) on the side, when the set torque is reached. When the set torque is reached, the wrench automatically leaves a mark on nuts (bolts) to provide evidence of proper tightening.

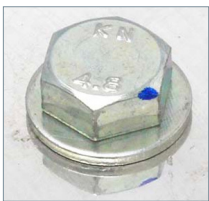
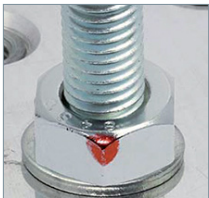
Conventionally, the tightening and marking procedure is a two-step process: (1) Tighten with a torque wrench; then (2) Make a mark with a pen. Tohnichi's MPCL/MCSP series marking torque wrench prevents a mark from being made if tightening was forgotten.

A preset clicker torque wrench is ideal for successive tightenings at the same torque. The MCSP series torque wrenches come in a selection of three body types, permitting tightening torque applications from 10 to 140 Nm.

MSH15D series interchangeable heads for the MCSP series offer a selection of 14 sizes. Interchangeable open end head dimensions (width across flats) of nuts (bolts) are covering 12, 13, 14, 16, 17, 18, 19, 21, 22, 24, 26, 27, 30, and 32 mm. The MSH15D series open end interchangeable heads are more compact than those in the regular SH series, making them useful for marking where dimensions are restricted.

Uses a disposable marker, so no need for ink refills. One marker performs about 2,000 markings. Marker replacement is easy. MCSP marking wrenches are suitable for horizontal as well as for vertical applications.

- ▶ Bolt/nut torque control.
- ▶ Prevents human tightening errors (PokaYoke).
- ▶ Accuracy according EN ISO 6789 (Type II, Class B).
- ▶ Approx. 2 000 shots per marker.
- ▶ Selection of two colors: red and blue.
- ▶ 14 Interchangeable Heads from 12 to 32 mm available.
- ▶ Easy replacement of disposable marker (no refill ink).
- ▶ Tightening piping on hydraulic / pneumatic devices.
- ▶ Construction projects involving electrical / telecommunication / power facility / air-conditioning equipment / natural gas installations; etc.

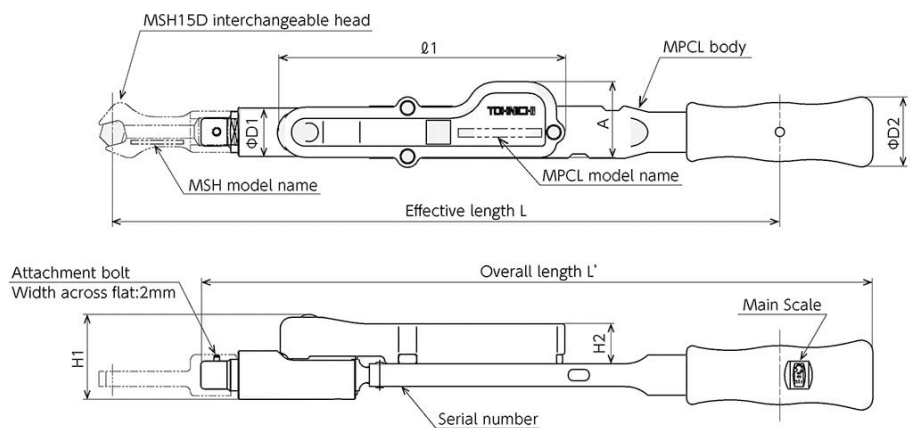


Markers:
 #1651 – red, Pk 10 ea
 #1652 – red, Pk 100 ea
 #1653 – blue, Pk 10 ea
 #1654 – blue, Pk 100 ea



Magn. Spacer Pin:
 #1673 – gold SW 26-32
 #1672 – black SW 19-24
 #1671 – silver SW 10-18

INFO
 The MPCL/MCSP Marking Torque Wrench requires MSH series interchangeable heads (sold separately). It cannot use regular SH series heads. MSH interchangeable heads come with one magnetic spacer pin (see next page) and one attachment bolt.



MPCL (pre-lock)*

Modell	Art.-Nr.	Drehm./Grad.		L'	L	L1	H1	øD1	Gew.
		N-m	N-m						
MPCL50NX15D	T212530	10 - 50	0.5	289	288	121	43.6	23	0.7
MPCL100NX15D	T212531	20 - 100	1	361	358	153	45.6	26	0.9
MPCL140NX15D	T212532	30 - 140	1	425	422	153	45.6	26	1.0

MCSP (preset)

Modell	Art.-Nr.	Drehmoment	L'	L	L1	H1	øD1	Gew.
MCSP50NX15D	T212525	10 - 50	282	283	121	43.6	23	0.7
MCSP100NX15D	T212526	20 - 100	355	356	153	45.6	26	0.9
MCSP140NX15D	T212527	30 - 140	419	420	153	45.6	26	1.0

