

# Marking Torque Wrench – MPQL / MQSP



Fig.: MPQL100N4 (without accessories)



Select MK 9 or MK 5

## Ratcheting Clicker Wrench with Marking Function for Tightening Verification

Lets you make direct visual checks for bolt tightening errors. When the adjusted torque value is reached and the wrench clicks, the bolt head is marked. So tightening and marking is done in a single operation. Marking is not done until set torque is achieved. Marking stays on by use of quick dry ink.

Ink cartridges can easily be installed in the special socket wrench. One cartridge filling is sufficient for appr 6000 stamping processes. Height of the stamp is adjustable ( $\pm 5$  mm).

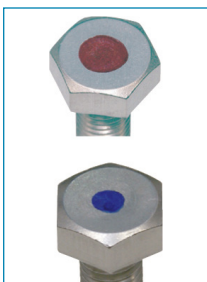
Setting torque can be operated by an attached hex key to avoid torque change by human mistake. The set torque is visible via a small scale window in the handle. The torque adjustment hex key is a standard accessory.



Select MH socket size

## Accs & Spares

- Solvent (for white and yellow only)
- Extension 50 mm or 100 mm (either)
- Replacement Felt Tips (see next page)



Select proper marking colour for marking heads:

- Black-oxide: white / yellow.
- Chrome, Steel: red / blue / white / yellow.



Select refill ink

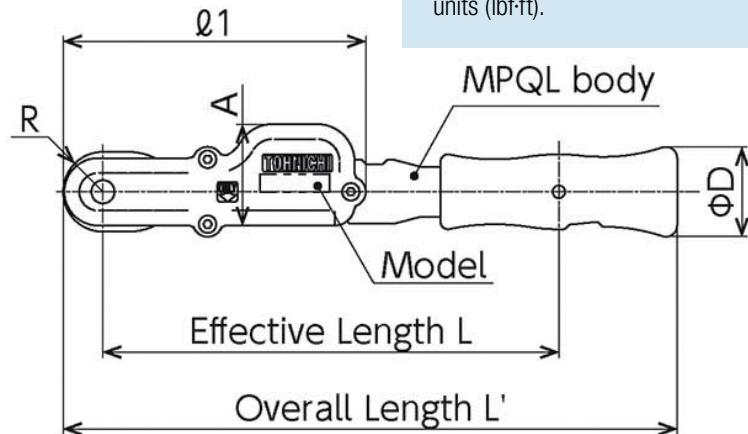
- Accuracy  $\pm 3\%$ .
- Ratchet head w 24 teeth and  $15^\circ$  operating range.
- Tightening and marking in a single operation.
- Ideal for tightening verification assembly processes.
- Compliant with EN ISO 6789 Type II Class A calibration procedures.
- Incl. traceable calibration certificate (JCSS/ISO).

## Equipped with ... ?

- Marker head:  $\varnothing 9$  mm or  $\varnothing 5$  mm
- Ink: red, blue, white, or yellow
- Marker socket (see chart next page)

## Options

- Alternatively available with imperial torque units (lbf-ft).



## MPQL/MQL (pre-lock)\*

Model	Item No.	Torque Rg. N-m	Grad. N-m	Dimensions mm				Weight kg
				L	L'	D	R	
MPQL 50N	T212501	<b>10 - 50</b>	0.5	183	246	36	16	0.7
MPQL 100N4	T212504	<b>20 - 100</b>	1	252	320	37.7	17	1.0
MPQL 140N	T212507	<b>30 - 140</b>	1	316	385	37.7	18.8	1.1
MPQL 200N4	T212510	<b>40 - 200</b>	2	398	470	44.2	20	1.8
MQL 280N	T212513	<b>60 - 280</b>	2	600	692	51.5	22.5	2.6

## MQSP (preset)

Model	Item No.	Torque Range N-m	Dimensions mm				Weight kg
			L	L'	D	R	
MQSP 50N	T212516	<b>10 - 50</b>	178	240	34	16	0.7
MQSP 100N4	T212517	<b>20 - 100</b>	251	315	34	17	1.0
MQSP 140N	T212518	<b>30 - 140</b>	315	380	34	18.8	1.1
MQSP 200N	T212519	<b>40 - 200</b>	400	465	27	20	1.8

