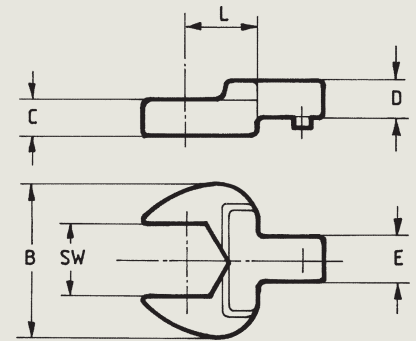
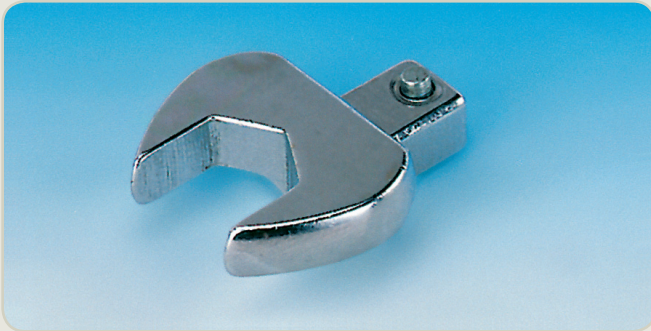


Interchangeable Heads (DIN) – Open End



Interchangeable open end head with DIN rectangle connector 9×12 mm resp. 14×18 mm. The head is secured by a spring-loaded lock pin.

The load capacity is dependent on the width A/F and may be less than the capacity of the used clicker wrench.

Interchangeable heads with the same Centerline may be interchanged among themselves arbitrarily, without needing the torque wrench to be adjusted again. Vice versa, when interchanging heads with differing Centerlines, the torque wrench must be individually adjusted in each case!

- DIN rectangle insert 9×12 mm bzw. 14×18 mm.
- Secured by spring-loaded lock pin.
- Centerline 17.5 mm resp. 25 mm.
- Forged alloy steel, chrome plated.



Recommended for use with S/R preset torque wrenches series TC.

S9-OE

Model	Part No.	A/F mm	Dimensions mm			Price €	PG
			B	C	L		
S9-OE 7	R716050	7	22	5	17.5	15	
S9-OE 8	R716051	8	22	5	17.5	15	
S9-OE 9	R716052	9	26	6	17.5	15	
S9-OE 10	R716053	10	26	6	17.5	15	
S9-OE 11	R716054	11	26	6	17.5	15	
S9-OE 12	R716055	12	30	7	17.5	15	
S9-OE 13	R716056	13	30	7	17.5	15	
S9-OE 14	R716057	14	35	8	17.5	15	
S9-OE 15	R716058	15	35	8	17.5	15	
S9-OE 16	R716059	16	38	9	17.5	15	
S9-OE 17	R716060	17	38	9	17.5	15	
S9-OE 18	R716061	18	42	9	17.5	15	
S9-OE 19	R716062	19	42	9	17.5	15	

S14-OE

Model	Part No.	A/F mm	Dimensions mm			Price €	PG
			B	C	L		
S14-OE 13	R716556	13	30	7	25	15	
S14-OE 14	R716557	14	35	8	25	15	
S14-OE 15	R716558	15	35	8	25	15	
S14-OE 16	R716559	16	38	9	25	15	
S14-OE 17	R716560	17	38	9	25	15	
S14-OE 18	R716561	18	42	10	25	15	
S14-OE 19	R716562	19	42	10	25	15	
S14-OE 21	R716564	21	50	11	25	15	
S14-OE 22	R716565	22	50	11	25	15	
S14-OE 24	R716566	24	53	12	25	15	
S14-OE 27	R716567	27	60	13	25	15	
S14-OE 30	R716568	30	66	14	25	15	
S14-OE 32	R716569	32	66	14	25	15	

Prices are valid per unit in Euro plus VAT and/or any custom fees exw Hamburg, incl. packing. Subject to change. Errors excepted.

ZEMO Vertriebs GmbH · Peutestr. 47 · 20539 Hamburg · Tel: +49 (0)40-789181-02 · Fax: +49 (0)40-789181-12 · E-Mail: info@zemo-tools.de