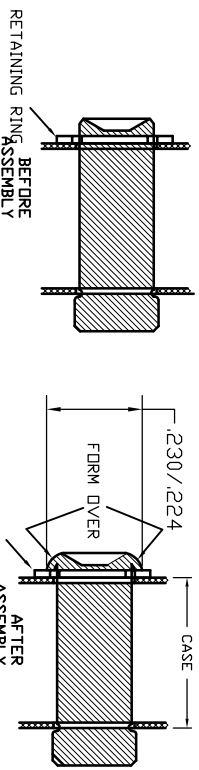


816799—THIS PIN IS FORMED OVER CUSTOMER MUST GRIND OFF FORMED END & INSTALL THIS PIN FORMING THE HEAD OVER THE RETAINING RING AS SHOWN.



816958—Ratchet Renewal Kit (Includes Spindle, Reversing Pin, Washer, Retaining Ring, Spring, & Ball)
 811369—Ratchet Tang Ass'y. (Includes Ratchet Renewal Kit & Tang)
 857045—Instructions

LEGEND: () = Quantity/Tool
 * = Quantity/Multi-Pak



STURTEVANT RICHMOND
 TORQUE MEASUREMENT SYSTEMS
 DIVISION OF RYERSON CORPORATION

THIS PRINT AND ALL INFORMATION APPEARING THEREON IS THE PROPERTY OF STURTEVANT/RICHMOND. NEITHER THE PRINT NOR THE INFORMATION THEREON MAY BE REPRODUCED OR USED IN ANY MANNER WHATSOEVER, EITHER WHOLLY OR IN PART, WITHOUT THE WRITTEN PERMISSION OF STURTEVANT/RICHMOND.

PART DESCRIPTION
 LTR 1501 3/8" (IN./LBS)

DIAGRAM NO. & REV.
 810589-K