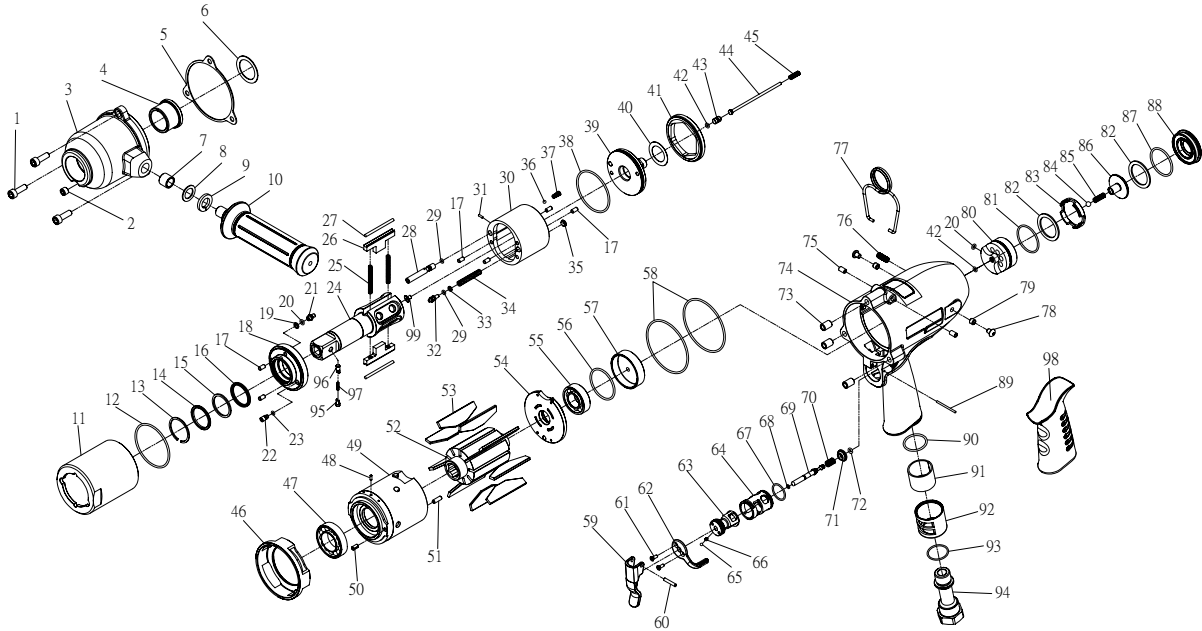


RRI-180T IMPULSE WRENCH



Edition:07

Index No.	Part No.	Description	Q'ty	Index No.	Part No.	Description	Q'ty
1	00-0140	Screw	3	55	00-2382	Ball Bearing(6003)	1
2	00-0612	Screw	1	56	00-4171	O-Ring(Ø 36x Ø2)	1
3	I180-201	Pulse Unit Housing	1	57	IS180-307	Rear Cover	1
4	I180-202	Bushing	1	58	00-41209	O-Ring(Ø 64.5x Ø2)	2
5	I180-205	Washer	1	59	I150-504	Trigger	1
6	I150-424	Washer	1	60	00-3308	Spring Pin(Ø 3x 18L)	1
7	00-4313	Helicoil	1	61	00-0505	Screw(M3x6L)	2
8	00-1514	Washer	1	62	I150-503	Regulator Knob	1
9	00-1811	Spring Washer	1	63	IS150-502	F/R Valve	1
10	I180-206	Side Handle	1	64	I150-501	Valve Sleeve	1
11	I180-401	Pulse Cylinder Seat	1	65	00-3813	Steel Ball(Ø 1/8")	1
12	00-41207	O-Ring(Ø 52x Ø2)	1	66	I100-506	Spring	1
13	I150-458	Snap Ring	1	67	00-41145	O-Ring(Ø 18x Ø1.5)	1
14	I150-457	Washer	1	68	00-4101	O-Ring(Ø 3x Ø1)	1
15	I150-409	Back-Up Ring	1	69	IS150-505	Valve Stem	1
16	00-2605	X-Ring	1	70	I150-507	Spring	1
17	00-3460	Pin(Ø4x 8L)	6	71	I150-508	Bushing	1
18	I180-408	Front Plate	1	72	00-41199	O-Ring(Ø 1.8x Ø1.9)	1
19	I150-431	Back-Up Ring	1	73	00-4312	Helicoil	3
20	00-41156	O-Ring(Ø 3.5x Ø1.5)	2	74	IS180-101	Motor Housing	1
21	I150-411	Valve Screw	1	75	00-3353	Spring Pin(Ø 5x 8L)	2
22	I150-410	Greasing Screw	1	76	IS100-609	Screw	1
23	00-41113	O-Ring(Ø2x Ø1.5)	1	77	I40S-102	Hanger	1
24	I180-405	Anvil	1	78	00-1304	Screw	2
25	I180-407	Spring	2	79	00-4302	Helicoil	2
26	I180-406	Drive Blade	2	80	IS180-524	Valve Seat	1
27	I180-452	Roller	2	81	00-41206	O-Ring(Ø 31.47x Ø1.78)	1
28	IS180-412	Valve	1	82	IS180-312	Washer	2
29	00-41178	O-Ring(Ø 2.5x Ø1.5)	3	83	IS180-518	Seat	1
30	I180-404	Pulse Cylinder	1	84	00-3812	Steel Ball(Ø 7/32")	1
31	00-3428	Pin(Ø2x 6L)	1	85	IS180-313	Spring	1
32	I150-455	Valve	1	86	IS180-311	Valve	1
33	I150-459	Back-Up Ring	1	87	00-4135	O-Ring(Ø 32x Ø2)	1
34	I180-453	Spring	1	88	I180-104	Nut	1
35	I150-454	Block Cap	1	89	00-3461	Pin(Ø2x 30L)	1
36	00-3829	Steel Ball(Ø 3.5)	1	90	00-41166	O-Ring(Ø 24x Ø2)	1
37	IS180-425	Spring	1	91	I180-601	Muffler	1
38	00-41208	O-Ring(Ø 49.5x Ø2)	1	92	I180-603	Exhaust Deflector	1
39	IS180-415	Rear Plate	1	93	00-4158	O-Ring(Ø 22x Ø1.5)	1
40	I150-423	Washer	1		I180-604A	Air Inlet 3/8"-19PF	1
41	I180-402	Lock Nut	1		I180-604B	Air Inlet 3/8"-19PT	1
42	00-4153	O-Ring(Ø 3x Ø1.5)	1		I180-604C	Air Inlet 3/8"-18NPT	1
43	IS180-421	Pressure Valve	1	95	I150-462	Upper Pin	1
44	IS180-314	Shut Off Stem	1	96	I150-463	Lower Pin	1
45	IS180-317	Spring	1	97	I150-464	Spring	1
46	I180-319	Lock Washer	1	98	I180-103	Housing Rubber	1
47	00-2383	Ball Bearing(6905)	1	99	IS180-450	Block Valve	1
48	00-3325	Spring Pin(Ø2x 6L)	1	※	IS180RK	Repair kit :Index No- 12; 15; 16; 19; 20; 25(2); 29(2); 33; 38; 42	
49	I180-302	Cylinder	1				
50	00-3314	Spring Pin(Ø4x 8L)	1				
51	00-3312	Spring Pin(Ø4x 12L)	1	※	IS180SK	Service kit :Index No- 18; 24; 26(2); 27(2); 39; 53(9) ; 70; 72; 85	
52	I180-303	Rotor	1				
53	I180-304	Rotor Blade	9				
54	I180-305	Rear Plate	1	※	I40-451	Impulse Oil	

★ Pulse unit includes: Index No : 11,12,13,14,15,16,17,18,19,20,21,22,23,24,25,26,27,28,29,30,31,32,33,34,35,36,37,38,39,41,42,43,99