



Verbindungsteile mit Vierkantantrieb nach DIN 3121 G



Reduzieradapter* – mit Stiftloch

Modell	Best.-Nr.	E Zoll	A Zoll	L mm	D2 mm	VE
KR1/4-3/8	313310	1/4	3/8	26	13	-
KR3/8-1/4	313326	3/8	1/4	32	22	-
KR3/8-1/2	313311	3/8	1/2	36	22	-
KR1/2-3/8	313312	1/2	3/8	38	26	-
KR1/2-3/4	313313	1/2	3/4	48	30	-
KR3/4-1/2	313314	3/4	1/2	58	40	-
KR3/4-1	313316	3/4	1"	63	40	-
KR1-1/2	313318	1"	1/2	70	54	-
KR1-3/4	313319	1"	3/4	75	54	-
KR1-3/4-L	313320	1"	3/4	80	52	-
KR1-1.1/2	313321	1"	1.1/2	91	52	-
KR1.1/2-1	313323	1.1/2	1"	95	84	-
KR1.1/2-2.1/2	313325	1.1/2	2.1/2	120	86	-
KR1.3/4-1.1/2	313327	1.3/4	1.1/2	153	127	-
KR2.1/2-1.1/2	313328	2.1/2	1.1/2	138	127	-

Ring+Stift nicht enthalten, bitte ggf. separat bestellen.



Reduzieradapter* – mit Kugelsicherung

Modell	Best.-Nr.	E Zoll	A Zoll	L mm	D2 mm	VE
KR1/4-3/8-KS	313253	1/4	3/8	26	13,6	-
KR3/8-1/4-KS	313254	3/8	1/4	32	22	-
KR3/8-1/2-KS	313251	3/8	1/2	36	22	-
KR1/2-3/8-KS	313250	1/2	3/8	38	25	-
KR1/2-3/4-KS	313255	1/2	3/4	48	30	-
KR3/4-1/2-KS	313252	3/4	1/2	56	44	-
KR3/4-1-KS	313256	3/4	1	75	54	-
KR1-3/4-KS	313527	1"	3/4	75	54	-

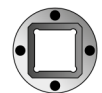
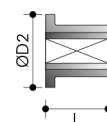
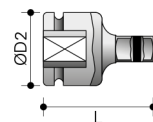
Reduzieradapter* – mit Federstift

Modell	Best.-Nr.	E Zoll	A Zoll	L mm	D2 mm	VE
KR1/4-3/8-FS	313210	1/4	3/8	26	13	-
KR3/8-1/4-FS	313211	3/8	1/4	32	19	-
KR3/8-1/2-FS	313212	3/8	1/2	36	22	-
KR1/2-1/4-FS	313213	1/2	1/4	35	25	-
KR1/2-3/8-FS	313214	1/2	3/8	38	25	-
KR1/2-3/4-FS	313215	1/2	3/4	48	30	-
KR5/8-1/2-FS	313216	5/8	1/2	46	35	-
KR5/8-3/4-FS	313217	5/8	3/4	70	35	-



Reduzieradapter* – mit Magnet

Modell	Best.-Nr.	E Zoll	A Zoll	L mm	D2 mm	VE
KRM1/4-3/8	313270	1/4	3/8	17	19	-
KRM1/4-1/2	313271	1/4	1/2	22	25	-
KRM3/8-1/2	313272	3/8	1/2	22	25	-
KRM1/2-5/8	313273	1/2	5/8	23	35	-
KRM1/2-3/4	313274	1/2	3/4	30	44	-
KRM3/4-1	313275	3/4	1"	35	54	-
KRM1-1.1/2	313276	1"	1.1/2	50	86	-
KRM1.1/2-2.1/2	313277	1.1/2	2.1/2	59	127	-
KRM2.1/2-3.1/2	313278	2.1/2	3.1/2	95	176	-
KRM-SET4	313290	1/4	3/8	17	19	-
		3/8	1/2	22	25	
		1/2	3/4	30	44	
		3/4	1	35	54	



* von der Herstellergarantie ausgenommen.

Weitere Infos auf unserer Website.

