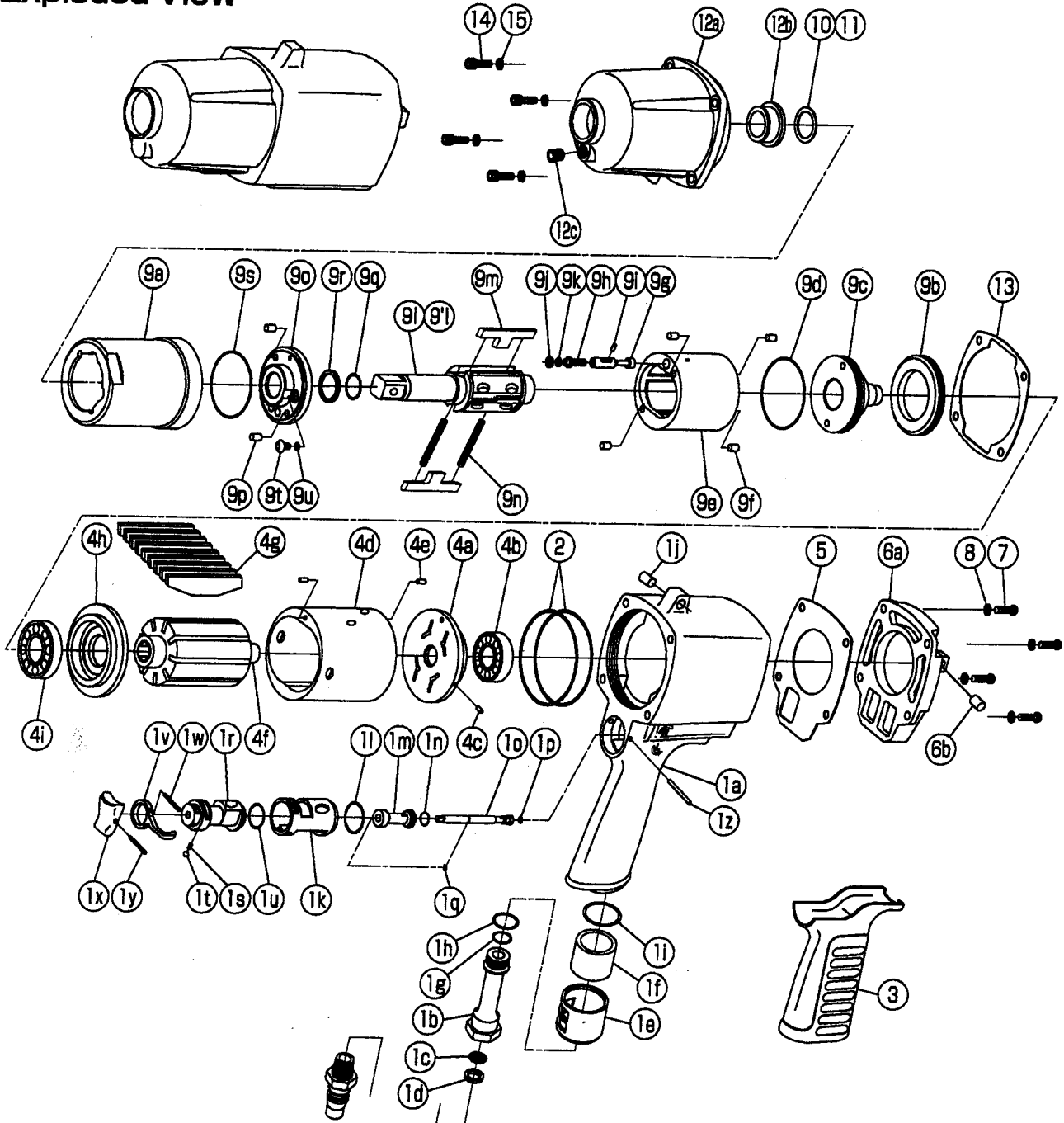


IMPULSE WRENCH

MODEL (YES.No.)	TOOL No.
Y-130E (00)	0335 0000 0009
Y-130 (00)	0335 0000 0000

Exploded View



YOKOTA EUROPA BV

P.O. BOX 392 NL-1000 AJ AMSTERDAM PHONE 020-5318800 FAX 020-5318808

e-mail info@impulsetools.com <http://www.impulsetools.com>

Hydraulic Impulse Wrenches, Impact Wrenches, Drills, Grinders, Screw Drivers, Chippers, Sealers, Pumps.

Parts List

No.	Name of Parts	Per Set	Parts No.	No.	Name of Parts	Per Set	Parts No.	
1	Motor Case Assy.	1set	0335 0011 00 99	9	Liner Case Assy.	1set	0335 0422 00 98	
	(a) Motor Case	1	* ↑		(a) Liner Case	1	0335 0422 00 00	
	Hose Joint Assy.	1set	0335 0113 00 99		(b) Liner Cap	1	0335 0423 00 00	
	(b) Hose Joint	1	0335 0113 00 00		(c) Liner Upper Plate	1	0335 0424 00 00	
	(c) Strainer	1	0259 0111 00 00		(d) O - Ring (N45)	1	9010 4043 00 00	
	(d) Washer (7.5×11×2)	1	8042 2008 00 00		Liner Assy.	1set	0335 0425 00 99	
	(e) Exhaust Cover	1	0335 0016 00 00		(e) Liner	1	* ↑	
	(f) Silencer Sheet	1	0335 0032 00 00		(f) Pin (4×7)	4	8052 1023 00 00	
	(g) O - Ring (N12)	1	9010 4005 00 00		(g) Relief Valve	1	0335 0245 00 00	
	(h) O - Ring (N16)	1	9010 4009 00 00		(h) Adjust Bolt	1	0334 0522 00 00	
	(i) O - Ring (N24)	1	9010 4012 00 00		(i) Pin (2×6)	1	8051 1038 00 00	
	(j) Spring Pin (6×10)	1	9250 1082 00 00		(j) Back-up Ring (4×6.4×1.25)	1	9090 1022 00 00	
	3 Stage Throttle Assy.	1set	0335 0186 00 99		(k) O - Ring (N4)	1	9010 4021 00 00	
	(k) Throttle Bushing	1	0335 0104 00 00		(l) Main Shaft Assy. (E-type)	1	0335 0614 00 99	
	(l) O - Ring (N20)	1	9010 4010 00 00		(m) Blade	2	0335 0719 00 00	
	Throttle Rod Bushing Assy.	1set	0335 0105 00 99		(n) Spring (4.1×36)	2	8020 1257 00 00	
	(m) Throttle Rod Bushing	1	0335 0105 00 00		Liner Lower Plate Assy.	1set	0335 0426 00 99	
	(n) O - Ring (P9 Hs90)	1	9010 1051 00 00		(o) Liner Lower Plate	1	* ↑	
	Throttle Rod Assy.	1set	0335 0106 00 99		(p) Spring Pin (4×8)	2	9250 3008 00 00	
	(o) Throttle Rod	1	0335 0106 00 00		(q) O - Ring (P16 Hs90)	1	9011 0008 00 00	
	(p) O - Ring (N4 Hs90)	1	9010 4058 00 00		(r) Back-up Ring (16×20×1.5)	1	9090 1012 00 00	
	(q) Snap Ring (ETW-2.8)	1	9040 5008 00 00		(s) O - Ring (N45)	1	9010 4043 00 00	
	(r) Reverse Valve	1	0335 0005 00 00		(t) Oil Plug (M4)	1	0048 0010 00 00	
	(s) Spring (3×4)	1	8020 1246 00 00		(u) O - Ring (N4)	1	9010 4021 00 00	
	(t) Ball (1/8)	1	9150 3009 00 00		10*	Washer (16.5×22×0.3)	1	8041 5038 00 00
	(u) O - Ring (N16)	1	9010 4009 00 00		11*	Washer (16.5×22×0.5)	1	8041 5039 00 00
	(v) Reverse Lever	1	0334 0007 00 00		12	Hammer Case Assy.	1set	0335 0401 00 99
(w) Spring Pin (2×12)	1	9250 1015 00 00	(a) Hammer Case	1		0335 0401 00 00		
(x) Throttle Knob	1	0158 0153 00 00	(b) Main Shaft Bushing	1		0141 0612 00 00		
(y) Spring Pin (1.5×14)	1	9250 1005 00 00	(c) Socket Plug (PT1/8)	1	8210 5001 00 00			
(z) FF Pin (2.5×25)	1	8055 1063 00 00	13	S - Packing (B)	1	0335 0003 00 02		
2	O - Ring (N60)	2	9010 4049 00 00	14	Bolt with Hex. Hole (M5×16)	4	8070 3051 00 00	
3	Rubber Grip	1	0334 0144 00 00	15	Spring Washer (M5)	4	9200 3005 00 00	
4	Motor Assy.	1set	0335 0305 00 99	Parts for Y-130				
	Upper Plate Assy.	1set	0335 0303 00 99	9'	Liner Case Assy.	1set	0335 0422 00 99	
	(a) Upper Plate	1	0335 0303 00 00	(l) Main Shaft	1set	0335 0614 00 01		
	(b) Ball Bearing (6201CM)	1	9102 1009 00 00	Standard Accessories				
	(c) Pin (2.5×6)	1	8055 1053 00 00	Protector	1	0335 0029 00 00		
	Cylinder Assy.	1set	0335 0304 00 99	Touch Joint (1/4-02)	1	9690 0002 00 00		
	(d) Cylinder	1	* ↑	Hex. Wrench (H5)	1	9610 1006 00 00		
	(e) Pin (2.5×6)	2	8055 1053 00 00	Hex. Wrench (H2×65×65)	1	9610 1013 00 00		
	(f) Rotor	1	0335 0305 00 00					
	(g) Vane	9	0335 0306 00 00					
	Lower Plate Assy.	1set	0335 0307 00 99					
	(h) Lower Plate	1	0335 0307 00 00					
(i) Ball Bearing (6904CM)	1	9102 1010 00 00						
5	S - Packing (A)	1	0335 0003 00 01					
6	Motor Case Cover Assy.	1set	0335 0001 00 99					
	(a) Motor Case Cover	1	0335 0001 00 00					
	(b) Spring Pin (6×10)	1	9250 1082 00 00					
7	Bolt with Hex. Hole (M5×14)	4	8071 1009 00 00					
8	Spring Washer (M5)	4	9200 3005 00 00					

The part "*" can not be supplied individually.

So please order it as a unit of assembly shown by arrow mark (↑).

☆marked parts; use one of them.