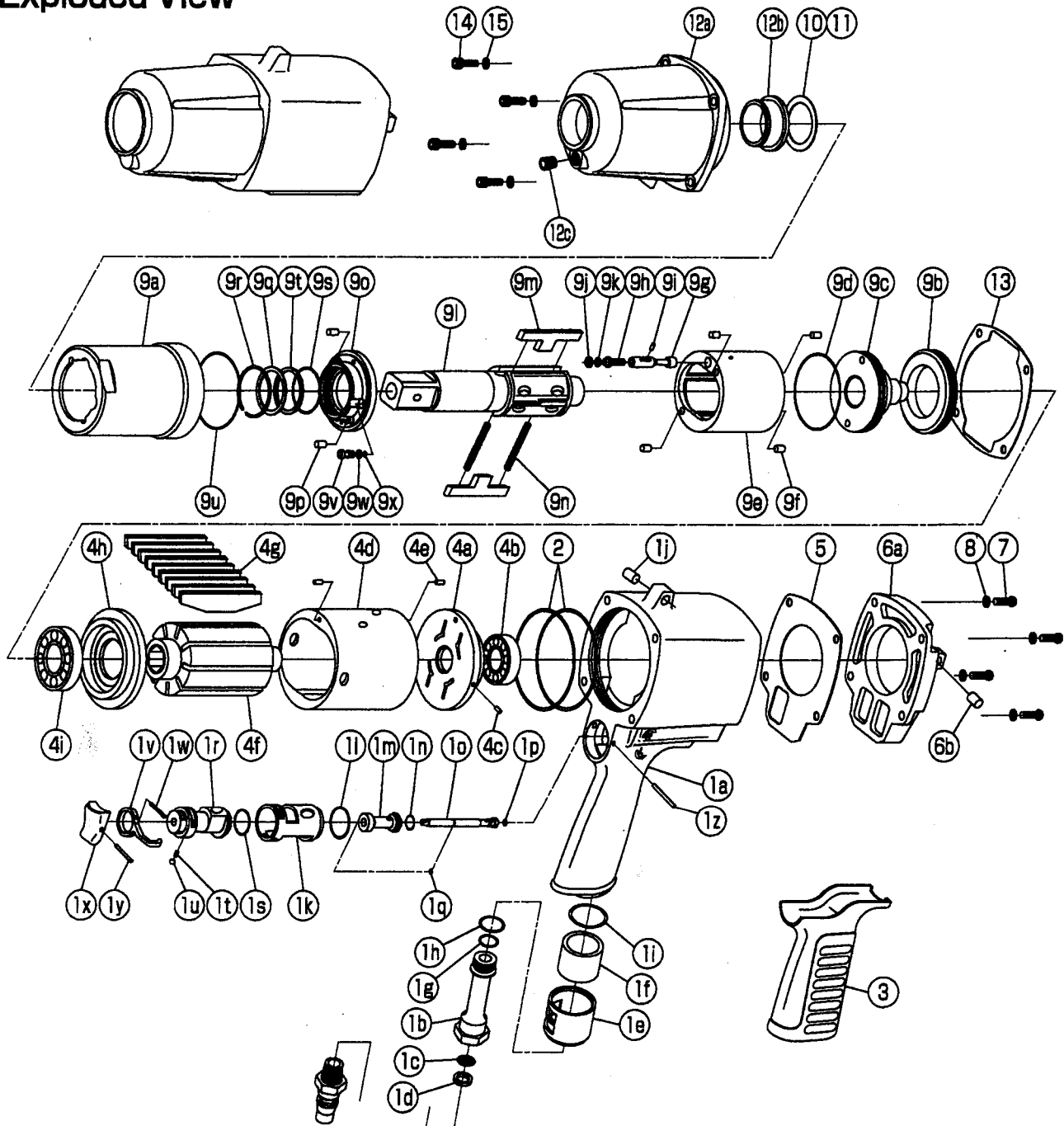


IMPULSE WRENCH

MODEL (YES.No.)	TOOL No.
Y-140 (00)	0412 0000 0000

Exploded View



YOKOTA EUROPA BV

P.O. BOX 392 NL-1000 AJ AMSTERDAM PHONE 020-5318800 FAX 020-5318808

e-mail info@impulsetools.com <http://www.impulsetools.com>

Hydraulic Impulse Wrenches, Impact Wrenches, Drills, Grinders, Screw Drivers, Chippers, Scales, Pumps.

Parts List

No.	Name of Parts	Per Set	Parts No.	No.	Name of Parts	Per Set	Parts No.
1	Motor Case Assy.	1set	0412 0011 00 99	9	Liner Case Assy.	1set	0412 0422 00 99
	(a) Motor Case	1	* ↑		(a) Liner Case	1	0412 0422 00 00
	Hose Joint Assy.	1set	0335 0113 00 99		(b) Liner Cap	1	0412 0423 00 00
	(b) Hose Joint	1	0335 0113 00 00		(c) Liner Upper Plate	1	0412 0424 00 00
	(c) Strainer	1	0259 0111 00 00		(d) O - Ring (N46)	1	9010 4032 00 00
	(d) Washer (7.5x11x2)	1	8042 2008 00 00		Liner Assy.	1set	0412 0425 00 99
	(e) Exhaust Cover	1	0335 0016 00 00		(e) Liner	1	* ↑
	(f) Silencer Sheet	1	0335 0032 00 00		(f) Pin (4x7)	4	8052 1023 00 00
	(g) O - Ring (N12)	1	9010 4005 00 00		(g) Relief Valve	1	0412 0245 00 00
	(h) O - Ring (N16)	1	9010 4009 00 00		(h) Adjust Bolt	1	0334 0522 00 00
	(i) O - Ring (N24)	1	9010 4012 00 00		(i) Pin (2x6)	1	8051 1038 00 00
	(j) Spring Pin (6x10)	1	9250 1082 00 00		(j) Back-up Ring (4x6.4x1.25)	1	9090 1022 00 00
	3 Stage Throttle Assy.	1set	0335 0186 00 99		(k) O - Ring (N4)	1	9010 4021 00 00
	(k) Throttle Bushing	1	0335 0104 00 00		(l) Main Shaft	1	0412 0614 00 01
	(l) O - Ring (N20)	1	9010 4010 00 00		(m) Blade	2	0412 0719 00 00
	Throttle Rod Bushing Assy.	1set	0335 0105 00 99		(n) Spring (4.6x41)	2	8020 1215 00 00
	(m) Throttle Rod Bushing	1	0335 0105 00 00		Liner Lower Plate Assy.	1set	0412 0426 00 99
	(n) O - Ring (P9 Hs90)	1	9010 1051 00 00		(o) Liner Lower Plate	1	* ↑
	Throttle Rod Assy.	1set	0335 0106 00 99		(p) Spring Pin (4x8)	2	9250 3008 00 00
	(o) Throttle Rod	1	0335 0106 00 00		(q) Washer (25x30x1.5)	1	8042 1012 00 00
	(p) O - Ring (N4 Hs90)	1	9010 4058 00 00		(r) Retaining Ring (29.5x1.4)	1	8030 1079 00 00
	(q) Snap Ring (ETW-2.8)	1	9040 5008 00 00		(s) O - Ring (2025 Hs70)	1	9011 3002 00 00
	(r) Reverse Valve	1	0335 0005 00 00		(t) Back-up Ring (25x29x1)	1	9090 1008 00 00
	(s) O - Ring (N16)	1	9010 4009 00 00		(u) O - Ring (N46)	1	9010 4032 00 00
	(t) Spring (3x4)	1	8020 1246 00 00		Oil Plug Assy.	1set	0412 0010 00 99
	(u) Ball (1/8)	1	9150 3009 00 00		(v) Oil Plug	1	0412 0010 00 00
	(v) Reverse Lever	1	0334 0007 00 00		(w) Back-up Ring (2.8x5x1)	1	9090 2006 00 00
	(w) Spring Pin (2x12)	1	9250 1015 00 00		(x) O - Ring (N3)	1	9010 4025 00 00
	(x) Throttle Knob	1	0158 0153 00 00		10* Washer (25.5x34x0.3)	1	8041 5029 00 00
	(y) Spring Pin (1.5x14)	1	9250 1005 00 00		11* Washer (25.5x34x0.5)	1	8041 5030 00 00
	(z) FF Pin (2.5x25)	1	8055 1063 00 00		12 Hammer Case Assy.	1set	0412 0401 00 99
	2 O - Ring (N63)	2	9010 4038 00 00		(a) Hammer Case	1	0412 0401 00 00
3 Rubber Grip	1	0334 0144 00 00	(b) Main Shaft Bushing	1	0405 0612 00 00		
4	Motor Assy.	1set	0412 0305 00 99	(c) Socket Plug (PT1/8)	1	8210 5001 00 00	
	Upper Plate Assy.	1set	0412 0303 00 99	13 S - Packing (B)	1	0412 0003 00 02	
	(a) Upper Plate	1	0412 0303 00 00	14 Bolt with Hex. Hole (M5x16)	4	8070 3051 00 00	
	(b) Ball Bearing (6202CM)	1	9102 1008 00 00	15 Spring Washer (M5)	4	9200 3005 00 00	
	(c) Pin (2.5x6)	1	8055 1053 00 00	Standard Accessories			
	Cylinder Assy.	1set	0412 0304 00 99	Protector	1	0412 0029 00 00	
	(d) Cylinder	1	* ↑	Touch Joint (1/4-02)	1	9690 0002 00 00	
	(e) Pin (2.5x6)	2	8055 1053 00 00	Hex. Wrench (H5)	1	9610 1006 00 00	
	(f) Rotor	1	0412 0305 00 00	Hex. Wrench (H2x65x65)	1	9610 1013 00 00	
	(g) Vane	9	0412 0306 00 00				
Lower Plate Assy.	1set	0412 0307 00 99					
(h) Lower Plate	1	0412 0307 00 00					
(i) Ball Bearing (6905CM)	1	9102 1007 00 00					
5 S - Packing (A)	1	0412 0003 00 01					
6	Motor Case Cover Assy.	1set	0412 0001 00 99				
	(a) Motor Case Cover	1	0412 0001 00 00				
	(b) Spring Pin (6x10)	1	9250 1082 00 00				
7 Bolt with Hex. Hole (M5x14)	4	8071 1009 00 00					
8 Spring Washer (M5)	4	9200 3005 00 00					

The part "*" can not be supplied individually.
 So please order it as a unit of assembly shown by arrow mark (↑).
 ☆marked parts; use one of them.