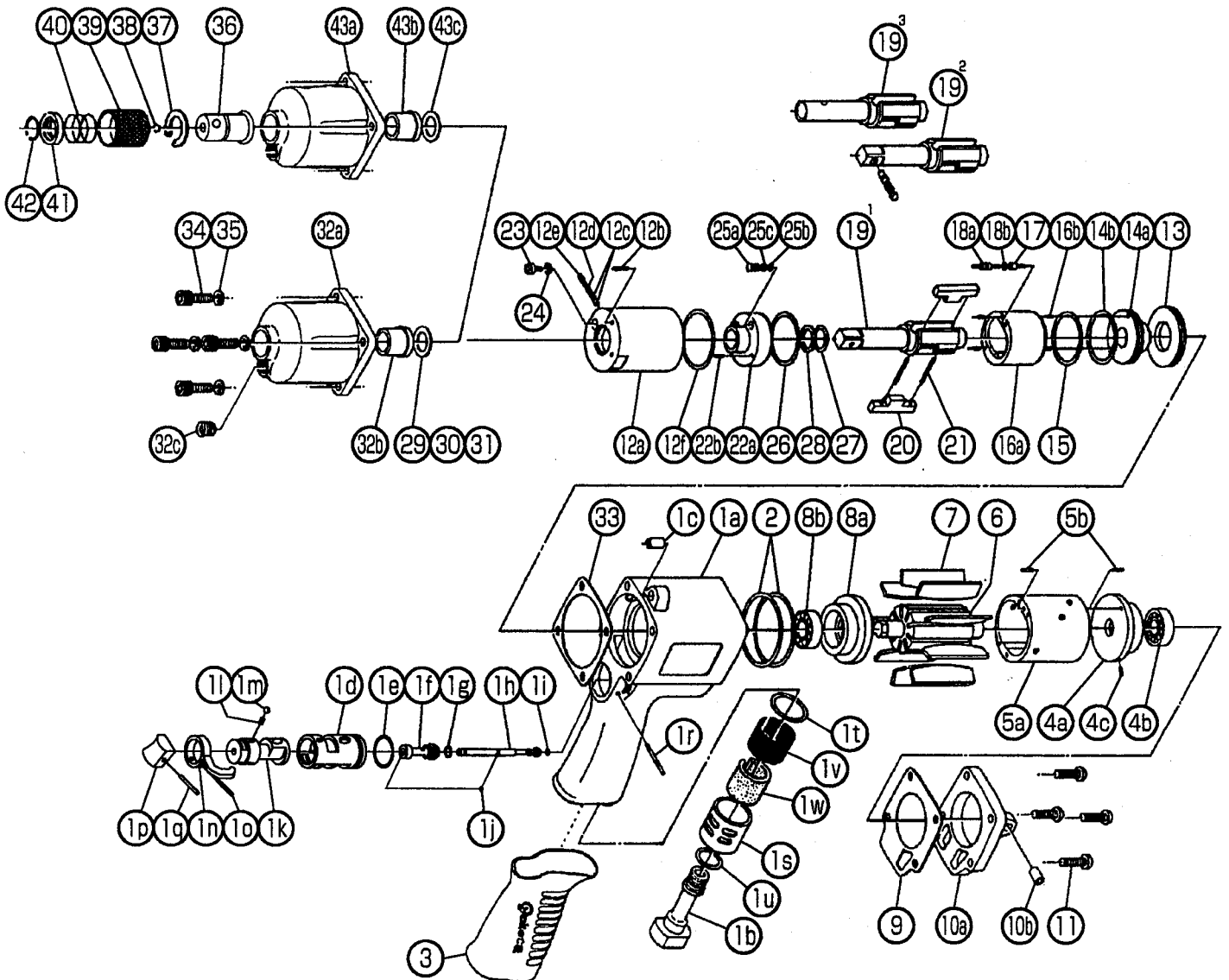


IMPULSE WRENCH

MODEL (YES.No.)	TOOL No.
Y-70E (02)	0135 0000 0209
Y-70 (02)	0135 0000 0200
Y-70-H(02)	0135 0000 0215

Exploded View



The part "*" can not be supplied individually. So please order it as a unit of assembly shown by arrow mark (†).
 ★marked parts may be not used, in some case.



YOKOTA EUROPA BV

P.O. BOX 392 NL-1000 AJ AMSTERDAM PHONE 020-5318800 FAX 020-5318808

Hydraulic Impulse Wrenches, Impact Wrenches, Drills, Grinders, Screw Drivers, Chippers, Scalers, Pumps

Parts List

No.	Name of Parts	Per Set	Parts No.	No.	Name of Parts	Per Set	Parts No.
1	Motor Case Assy.	1set	0135 0011 01 99		(a) Liner Upper Plate	1	0135 0424 01 00
	(a) Motor Case (A)	1	* ↑		(b) O - Ring (N28)	1	9010 4029 00 00
	(b) Hose Joint	1	0141 0113 00 00	15	O - Ring (1.3×28.7×31.3)	1	9010 6010 00 00
	(c) Spring Pin (6×10)	1	9250 1082 00 00	16	Liner Assy.	1set	0135 0425 00 99
	Throttle Bushing Assy.	1set	0167 0104 00 99		(a) Liner	1	* ↑
	(d) Throttle Bushing	1	* ↑	(b) Pin (2.5×6)	4	8051 1072 00 00	
	(e) O - Ring (N16)	1	9010 4009 00 00	17	Relief Valve	1	0086 0245 00 00
	Throttle Rod Bushing Assy.	1set	0167 0105 00 99	18	Spring Guide (B) Assy.	1set	0135 0510 00 99
	(f) Throttle Rod Bushing	1	* ↑		(a) Spring Guide (B)	1	* ↑
	(g) O - Ring (P6)	1	9010 1049 00 00	(b) O - Ring (0.7×2×3.4)	1	9010 6020 00 00	
	Throttle Rod Assy.	1set	0167 0106 00 99	19 ¹	Main Shaft Assy.(E-type)	1set	0281 0614 00 59
	(h) Throttle Rod	1	* ↑	20	Blade	2	0086 0719 03 00
	(i) O - Ring (N3)	1	9010 4051 00 00	21	Spring (3.4×22.7)	2	8020 1253 00 00
	(j) Snap Ring (ETW-2.8)	1	9040 5008 00 00	22	Liner Lower Plate Assy.	1set	0135 0426 00 99
	(k) Reverse Valve	1	0141 0005 02 00		(a) Liner Lower Plate	1	* ↑
	(l) Spring (3×4)	1	8020 1246 00 00	(b) Spring Pin (3×8)	1	9250 2022 00 00	
	(m) Ball (1/8)	1	9150 3009 00 00	23	Oil Plug	1	0081 0010 01 00
	(n) Reverse Lever	1	2315 0007 00 00	24	O - Ring (N3)	1	9010 4025 00 00
	(o) Spring Pin (2×12)	1	9250 1015 00 00	25	Oil Stop Cap Assy.	1set	0081 0602 00 99
	(p) Throttle Knob	1	0094 0153 00 00		(a) Oil Stop Cap	1	* ↑
(q) Spring Pin (1.5×14)	1	9250 1005 00 00	(b) O - Ring (N2)		1	9010 4001 00 00	
(r) AA Pin (3×23.8)	1	8051 3041 00 00	(c) Back-up Ring (N2)	1	9090 2001 00 00		
(s) Exhaust Cover	1	0141 0016 00 00	26	O - Ring (1×29.2×31.2)	1	9010 6022 00 00	
(t) O - Ring (N20)	1	9010 4010 00 00	27	O - Ring (2.3×11.8×16.4)	1	9010 6019 00 00	
(u) O - Ring (N15)	1	9010 4008 00 00	28	Back-up Ring (12×16×1)	1	9090 5001 00 00	
(v) Silencer Sheet (A)	1	0141 0032 00 01	29*	Washer (12.5×18×0.3)	0~1	8041 5034 00 00	
(w) Silencer Sheet (B)	1	0141 0032 00 02	30*	Washer (12.5×18×0.5)	0~1	8041 5011 00 00	
2	O - Ring (N40)	2	9010 4017 00 00	31*	Washer (12.5×18×1)	0~1	8041 5021 00 00
3	Rubber Grip	1	0141 0144 00 00	32	Hammer Case Assy.	1set	0135 0401 00 99
4	Upper Plate Assy.	1set	0135 0303 00 99		(a) Hammer Case	1	0135 0401 00 00
	(a) Upper Plate	1	0135 0303 00 00		(b) Main Shaft Bushing	1	0081 0612 00 00
	(b) Ball Bearing (6901)	1	9100 1035 00 00	(c) Socket Plug (R 1/8)	1	8210 5001 00 00	
(c) AA Pin (2×6.8)	1	8051 3017 00 00	33	S - Packing (B)	1	0135 0003 00 02	
5	Cylinder Assy.	1set	0135 0304 00 99	34	Screw (M5×18)	4	8070 3052 00 00
	(a) Cylinder	1	* ↑	35	Spring Washer (M5)	4	9200 3005 00 00
	(b) Pin (2.5×6)	2	8055 1053 00 00	Parts for Y-70			
6	Rotor	1	0135 0305 00 00	19 ²	Main Shaft	1	0281 0614 00 01
7	Vane	9	0135 0306 00 00	Parts for Y-70-H			
8	Lower Plate Assy.	1set	0135 0307 01 99	19 ³	Main Shaft	1	0135 0614 01 41
	(a) Lower Plate	1	0135 0307 01 00	36	Chuck Body (Hex8)	1	0135 0663 00 00
(b) Ball Bearing (6900)	1	9100 1046 00 00	37	Snap Ring (ISTW-15)	1	9040 4007 00 00	
9	S - Packing (A)	1	0135 0003 00 01	38	Ball (4mm)	1	9150 1005 00 00
10	Motor Case Cover Assy.	1set	0135 0001 00 99	39	Bit Chuck	1	0135 0414 00 00
	(a) Motor Case Cover	1	* ↑	40	Spring (17.5×12)	1	8020 1294 00 00
(b) Spring Pin (6×10)	1	9250 1082 00 00	41	Spring Washer	1	0135 0419 00 00	
11	Screw (M5×18)	4	8071 1012 00 00	42	Retaining Ring (14×1)	1	8030 1075 00 00
12	Liner Case (A) Assy.	1set	0135 0422 01 98	43	Hammer Case Assy.	1set	0135 0401 00 49
	(a) Liner Case	1	0135 0422 00 00		(a) Hammer Case (A)	1	0135 0401 00 01
	(b) Screw (M3×8)	1	9480 2024 00 00		(b) Main Shaft Bushing	1	0135 0612 00 00
	(c) Rubber Plate	2	0259 0047 00 00	(c) Socket Plug (R 1/8)	1	8210 5001 00 00	
	(d) Spring (3×5)	1	8020 1288 00 00	Standard Accessories			
	(e) Screw (平先 M4×4)	1	9480 2031 00 00		Swivel Joint	1	9690 0015 00 00
(f) O - Ring (N32)	1	9010 4014 00 00		Hex. Wrench (H1.5×65×65)	1	9610 1012 00 00	
13	Liner Cap	1	0086 0423 00 00		Hex. Wrench (H5)	1	9610 1006 00 00
14	Liner Upper Plate Assy.	1set	0135 0424 01 99		Protector	1	0135 0029 00 00