

Parts for Liner Case

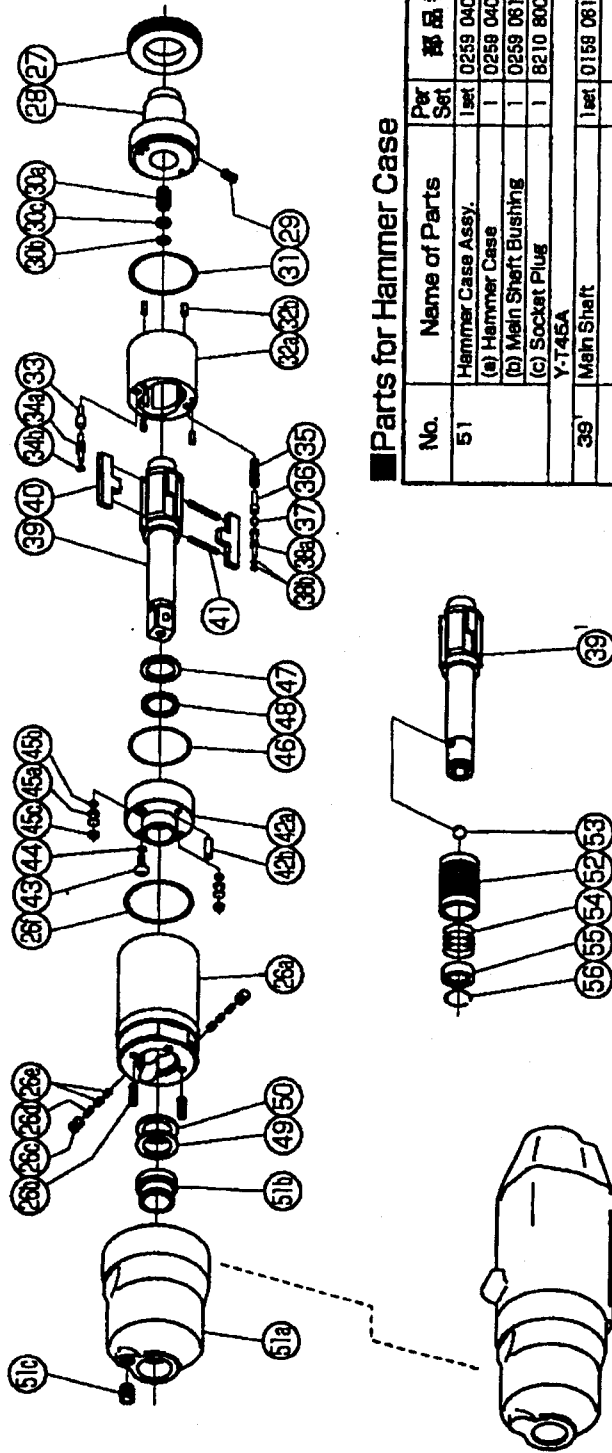
No.	Name of Parts	Per Set	Parts No.
26	Liner Case (A) Assy.	1set	0164 0422 00 98
	(a) Liner Case	1	■
	(b) Screw (M3 x 8)	2	9480 2024 00 00
	(c) Rubber Plate	4	0081 0047 00 00
	(d) Spring (2.4 x 6)	2	8020 1267 00 00
	(e) Screw (M4 x 4)	2	8480 2031 00 00
	(f) O-Ring (N30)	1	9010 4019 00 00
27	Liner Cap	1	0081 0423 01 00
28	Liner Upper Plate	1	0164 0424 00 00
29	Screw (M3 x 5)	1	9480 2001 00 00
30	Sensor Assy.	1set	0164 0794 00 98
	(a) Sensor	1	0164 0794 00 00
	(b) O-Ring (1.75 x 3 x 6.5)	1	9010 6027 00 00
	(c) Back-up Ring (3.2 x 6 x 1.5)	1	9090 2005 00 00
31	O-Ring (1.5 x 26.5 x 29.5)	1	9010 8023 00 00
32	Liner Assy.	1set	0164 0425 00 98
	(a) Liner	1	■
	(b) Pin - AA (2 x 5)	4	8051 3081 00 00
33	Relief Valve	1	0088 0245 00 00
34	Spring Guide (B) Assy.	1set	0088 0510 00 99
	(a) Spring Guide (B)	1	■
	(b) O-Ring (0.7 x 2 x 3.4)	1	8010 8020 00 00
35	Spring (3.4 x 1.1)	1	8020 1136 00 00
36	Spring Guide	1	0164 0510 00 00
37	Ball (3mm)	1	8150 1003 00 00
38	Check Valve Assy.	1set	0164 0251 00 89
	(a) Check Valve	1	0164 0251 00 00
	(b) O-Ring (0.7 x 2 x 3.4)	2	9010 8020 00 00
39	Main Shaft Assy.	1	0159 0614 00 89
40	Blade	2	0088 0719 03 00
41	Spring (3.1 x 2.0)	2	8020 1296 00 00
42	Liner Lower Plate Assy.	1set	0164 0426 00 98
	(a) Liner Lower Plate	1	■
	(b) Spring Pin (3 x 6)	1	9250 2022 00 00
43	Oil Plug	1	0081 0010 00 00
44	O-Ring (N3)	1	9010 4025 00 00
45	Oil Stop Cap Assy.	2set	0081 0602 00 98
	(a) Oil Stop Cap	1	■
	(b) O-Ring (N2)	1	9010 4001 00 00
	(c) Back-up Ring (N2)	1	8090 2001 00 00
46	O-Ring (1 x 25.2 x 27.2)	1	9010 8012 00 00
47	X-Ring (2.25 x 2.4 x 12.5)	1	8910 0001 00 00
48	Back-up Ring (12 x 16 x 1)	1	9090 5001 00 00
49	Washer (12.5 x 16 x 0.5)	1	8041 5011 00 00
50	Washer (12.5 x 18 x 1)	1	8041 5021 00 00

The part * can not be supplied individually.
So please order it as a unit of assembly shown by arrow mark (1).

IMPULSE WRENCH

MODEL (YES.No.)	TOOL No.
Y-T45E (00)	0165 0000 0009
Y-T45A (00)	0165 0000 0001

Exploded View of Liner Case and Hammer Case



Parts for Hammer Case

No.	Name of Parts	Per Set	部品番号
51	Hammer Case Assy.	1set	0259 0401 00 99
	(a) Hammer Case	1	0259 0401 00 00
	(b) Main Shaft Bushing	1	0259 0612 00 00
	(c) Socket Plug	1	8210 8001 00 00
	Y-T45A		
39	Main Shaft	1set	0158 0614 00 51
	Bit Chuck Assy.	1set	2057 0414 00 89
52	Bit Chuck	1	2057 0414 00 00
53	Ball (1/8)	1	9150 3009 00 00
54	Spring (13.5 x 11.2)	1	8020 1137 00 00
55	Spring Washer	1	2057 0419 00 00
56	Retaining Ring (10 x 1)	1	8030 1009 00 00
	Standard Accessories		
	Touch Joint	1	8890 0002 00 00
	Hex. Wrench (H15x65x65)	1	9610 1012 00 00
	Hex. Wrench (H5/32)	1	9610 3008 00 00
	Protector	1	0164 0029 00 00

The part * can not be supplied individually.
So please order it as a unit of assembly shown by arrow mark (1).



YOKOTA EUROPA BV

P.O. BOX 392 NL-1000 AJ AMSTERDAM PHONE: 020-5318900 FAX: 020-5318908
Hydraulic Liner Case, Wrenches, Impact Wrenches, Drills, Sockets, Spring Drivers, Drivers, Sockets, Drivers

Parts for Motor Case

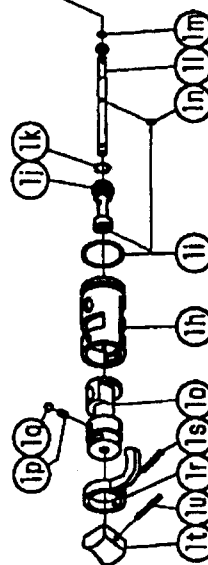
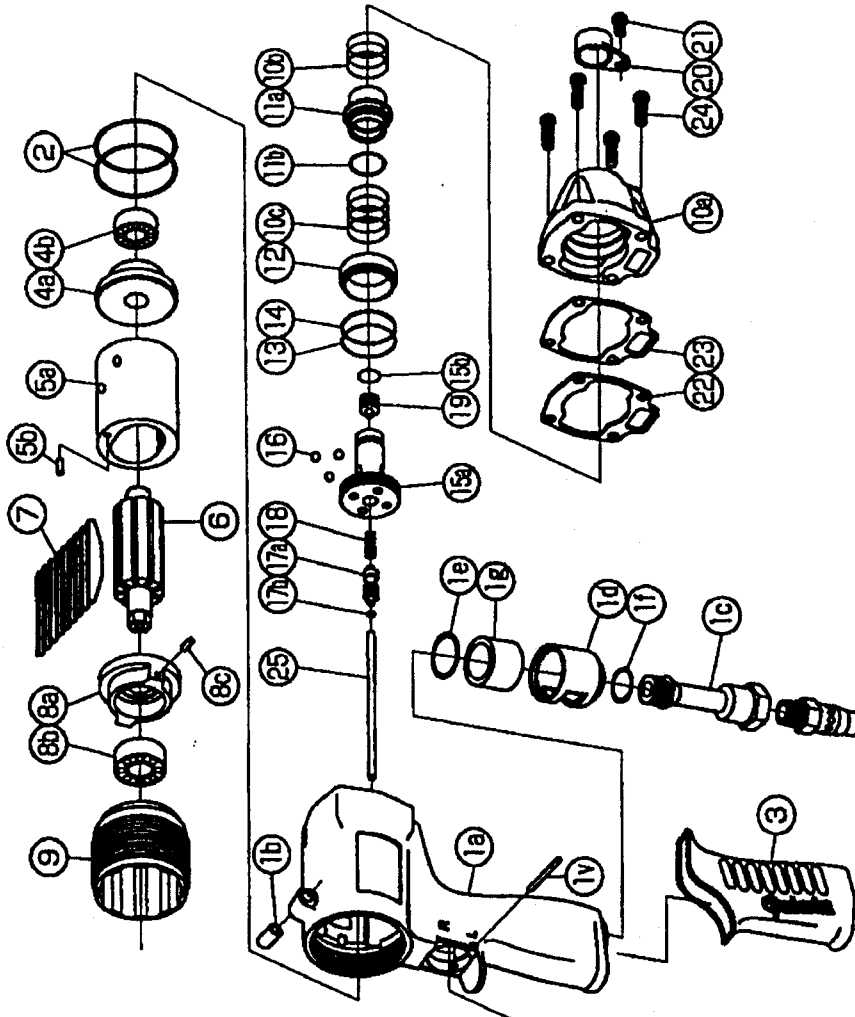
No.	Name of Parts	Per Set	Parts No.
1	Motor Case Assy.	1set	0164 0011 00 99
	(a) Motor Case	1	0164 0011 00 00
	(b) Spring Pin (6x10)	1	9250 1092 00 00
	(c) Hose Joint	1	0276 0113 00 00
	(d) Exhaust Cover	1	0276 0016 00 00
	(e) O - Ring (N20)	1	9010 4010 00 00
	(f) O - Ring (N15)	1	9010 4008 00 00
	(g) Silencer Sheet	1	0276 0032 00 00
	Throttle Bushing Assy.	1set	0136 0104 01 99
	(h) Throttle Bushing	1	*
	(i) O - Ring (N15)	1	9010 4008 00 00
	Throttle Rod Bushing Assy.	1set	0164 0106 00 99
	(j) Throttle Rod Bushing	1	*
	(k) O - Ring (No.3)	1	9010 3021 00 00
	Throttle Rod Assy.	1set	0164 0106 00 99
	(l) Throttle Rod	1	*
	(m) O - Ring (N3)	1	9010 4051 00 00
	(n) Snap Ring (ETW-2.8)	1	9040 5006 00 00
	(c) Reverse Valve	1	0164 0005 00 00
	(d) Spring (3x4)	1	8020 1246 00 00
	(e) Ball (1/8)	1	9150 3008 00 00
	(f) Reverse Lever	1	2331 0007 00 00
	(s) Spring Pin (2x12)	1	9250 1015 00 00
	(t) Throttle Knob	1	2024 0153 00 00
	(u) Spring Pin (1.5x14)	1	9250 1006 00 00
	(v) AA Pin (3x21.8)	1	8051 3040 00 00
2	O - Ring (N35.5)	2	9010 4022 00 00
3	Rubber Grip	1	0259 0144 00 00
4	Upper Plate Assy.	1set	0284 0303 00 99
	(a) Upper Plate	1	0284 0303 00 00
5	Ball Bearing (6900Z7)	1	9100 5035 00 00
	Cylinder Assy.	1set	0165 0304 00 99
	(a) Cylinder	1	*
	(b) Pin (2.5x6)	1	8055 1053 00 00
6	Rotor	1	0165 0305 00 00
7	Vane	8	0273 0306 00 00
8	Lower Plate Assy.	1set	0136 0307 00 99
	(a) Lower Plate	1	0136 0307 00 00
	(b) Ball Bearing (6900)	1	9100 1048 00 00
	(c) Pin (2.5x6)	1	8055 1053 00 00
9	Lower Plate Spacer	1	0136 0311 00 00
10	Motor Case Cover Assy.	1set	0164 0001 00 99
	(a) Motor Case Cover	1	0164 0001 00 00
	(b) Spring (18.5x11)	1	8020 1297 00 00
	(c) Spring (18.5x13)	1	8020 1298 00 00
	Control Valve Assy.	1set	0164 0241 00 99
	(a) Control Valve	1	0164 0241 00 00
	(b) O - Ring (P16)	1	9010 1015 00 00

16 part "*" can not be supplied individually. So please order as a unit of assembly shown by arrow mark (1).

IMPULSE WRENCH

MODEL (YES.No.)	TOOL No.
Y-T45E (00)	0165 0000 0009
Y-T45A (00)	0165 0000 0001

Exploded View of Motor Case



YOKOTA EUROPA BV

P.O. BOX 392 N.L. 1000 A1 AMSTERDAM. PHONE 020-5318900 FAX 020-5318908
Hydraulic, Pneumatic, Electric, Air Tools, Drills, Grinders, Saws, Drivers, Chisels, Sockets, Pumps