

**Parts for Motor Case**

No.	Name of Parts	Per Set	Parts No.
1	Motor Case Assy.	1set	0164 0011 00 99
	(a) Motor Case	1	0164 0011 00 00
	(b) Spring Pin (6x10)	1	9250 1082 00 00
	(c) Hose Joint	1	0278 0113 00 00
	(d) Exhaust Cover	1	0278 0016 00 00
	(e) O - Ring (N20)	1	9010 4010 00 00
	(f) O - Ring (N15)	1	9010 4008 00 00
	(g) Silencer Sheet	1	0278 0032 00 00
	Throttle Bushing Assy.	1set	0136 0104 01 99
	(h) Throttle Bushing	1	■
	(i) O - Ring (N15)	1	9010 4008 00 00
	Throttle Rod Bushing Assy.	1set	0164 0106 00 99
	(k) O - Ring (No.3)	1	9010 3021 00 00
	(l) Throttle Rod Bushing	1set	0164 0106 00 99
	Throttle Rod Assy.	1	■
	(m) O - Ring (N3)	1	9010 4051 00 00
	(n) Strip Ring (ETW-2B)	1	9040 5008 00 00
	(o) Reverse Valve	1	0164 0005 00 00
	(p) Spring (3x4)	1	8020 1246 00 00
	(q) Ball (1/8)	1	9160 3009 00 00
	(r) Reverse Lever	1	2331 0007 00 00
	(s) Spring Pin (2x12)	1	9250 1015 00 00
	(t) Throttle Knob	1	2024 0153 00 00
	(u) Spring Pin (1.5x14)	1	9250 1005 00 00
	(v) AA Pin (3x21.8)	1	9051 3040 00 00
2	O - RING (N35.5)	2	9010 4022 00 00
3	Rubber Grip	1set	0259 0144 00 00
4	Upper Plate Assy.	1set	0284 0303 00 99
	(a) Upper Plate	1	0284 0303 00 00
	(b) Ball Bearing (6800ZZ)	1	8100 5035 00 00
5	Cylinder Assy.	1set	0284 0304 00 99
	(a) Cylinder	1	■
	(b) Pin (2.5x6)	1	8055 1053 00 00
6	Rotor	1	0164 0305 00 00
7	Vane	9	0136 0306 00 00
8	Lower Plate Assy.	1set	0136 0307 00 99
	(a) Lower Plate	1	0136 0307 00 00
	(b) Ball Bearing (6900)	1	9100 1046 00 00
	(c) Pin (2.5x6)	1	8055 1053 00 00
9	Lower Plate Spacer	1	0136 0311 00 00
10	Motor Case Cover Assy.	1set	0164 0001 00 99
	(a) Motor Case Cover	1	0164 0001 00 00
	(b) Spring (18.5x11)	1	8020 1297 00 00
	(c) Spring (18.5x13)	1	8020 1298 00 00
11	Control Valve Assy.	1set	0164 0241 00 99
	(a) Control Valve	1	0164 0241 00 00
	(b) O - Ring (P16)	1	9010 1015 00 00

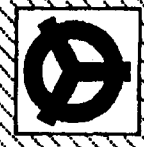
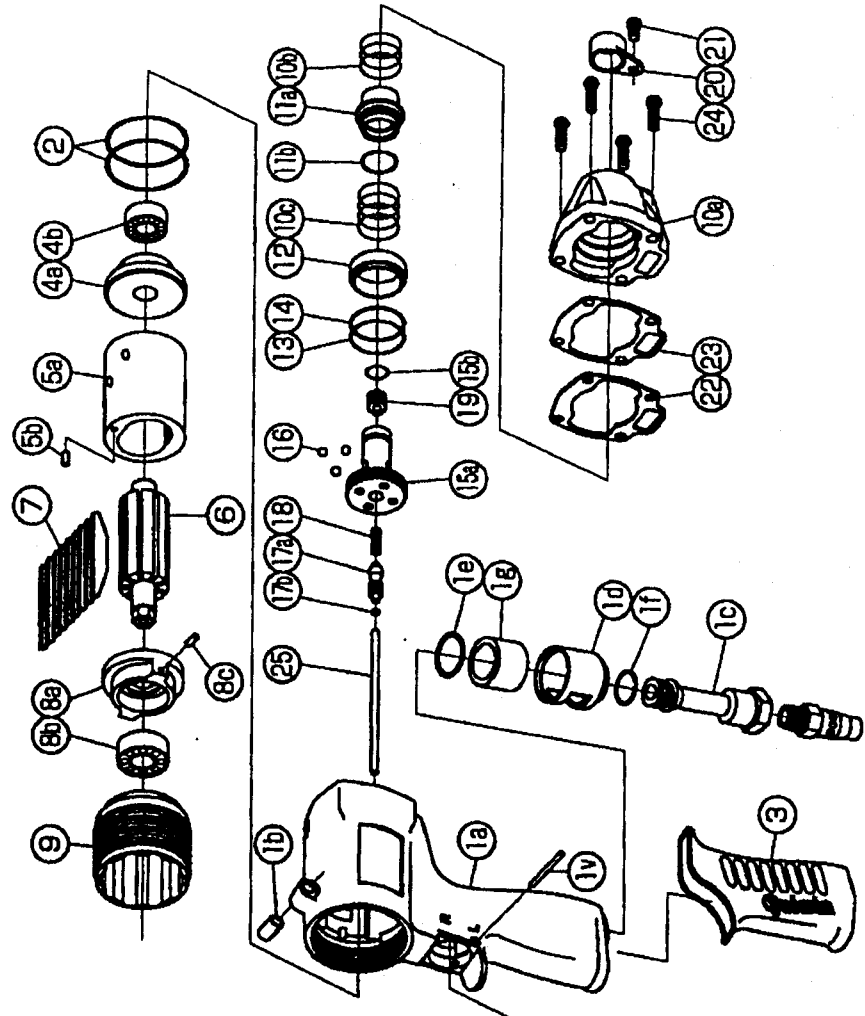
The part "\*" can not be supplied individually. So please order it as a unit of assembly shown by arrow mark (↑).

016400-P8606

**IMPULSE WRENCH**

MODEL (YES.No.)	TOOL No.
Y-T55E (00)	0164 0000 0009
Y-T55A (00)	0164 0000 0001

**Exploded View of Motor Case**



**YOKOTA EUROPA BV**

P.O. BOX 392 NL-1000 AJ AMSTERDAM PHONE 020-5318800 FAX 020-5318808  
Hydraulic Impulse Wrenches, Impact Wrenches, Drills, Brinders, Screw Drivers, Chisels, Sockets, Pulleys

**Parts for Liner Case**

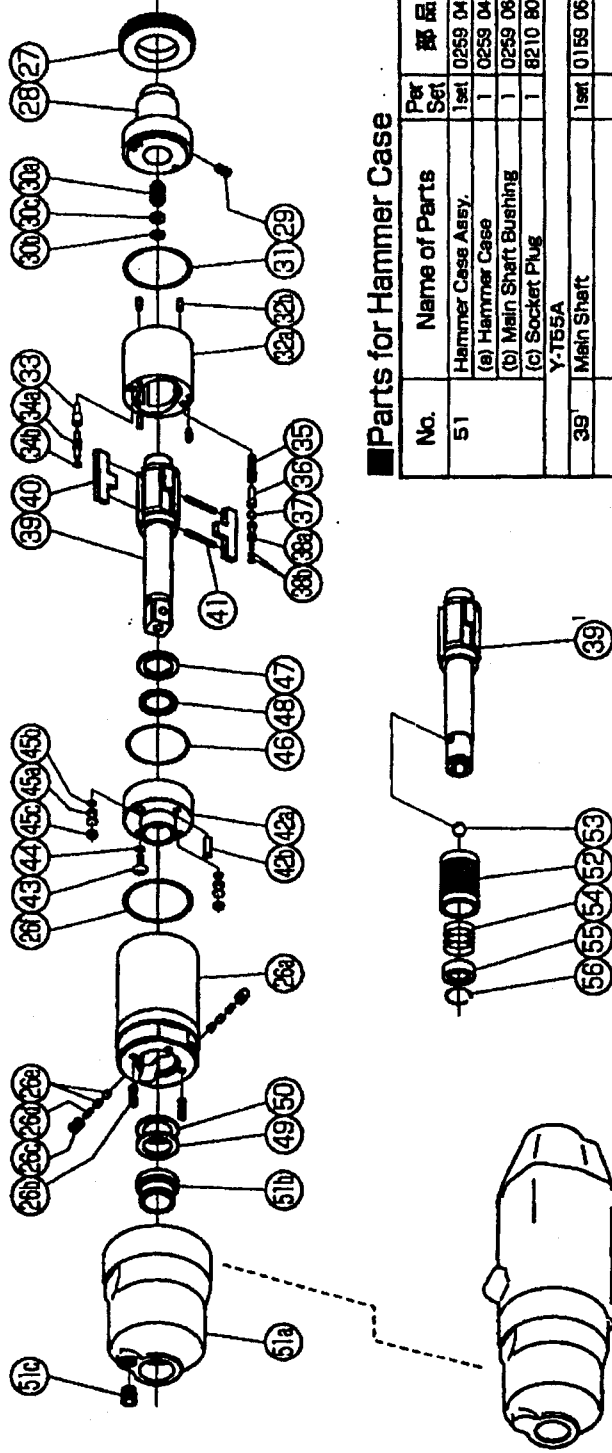
No.	Name of Parts	Per Set	Parts No.
26	Liner Case (A) Assy.	1set	0164 0422 00 88
	(a) Liner Case	1	#
	(b) Screw (M3 x 6)	2	9480 2024 00 00
	(c) Rubber Plate	4	0081 0047 00 00
	(d) Spring (2.4 x 6)	2	8020 1267 00 00
	(e) Screw (M4 x 4)	2	8490 2031 00 00
	(f) O-Ring (N30)	1	9010 4019 00 00
27	Liner Cap	1	0081 0423 01 00
28	Liner Upper Plate	1	0164 0424 00 00
29	Screw (M3 x 5)	1	9480 2001 00 00
30	Sensor Assy.	1set	0164 0784 00 99
	(a) Sensor	1	0164 0784 00 00
	(b) O-Ring (1.75x3x6.5)	1	9010 6027 00 00
	(c) Block-up Ring (2.2x8x1.5)	1	8090 2005 00 00
31	O-Ring (1.5x28.5x29.5)	1	9010 6023 00 00
32	Liner Assy.	1set	0164 0425 00 99
	(a) Liner	1	#
	(b) Pin - AA (2x5)	4	8051 3081 00 00
33	Relief Valve	1	0088 0245 00 00
34	Spring Guide (B) Assy.	1set	0088 0510 00 99
	(a) Spring Guide (B)	1	#
	(b) O-Ring (0.7x2x3.4)	1	9010 6020 00 00
35	Spring (3.4 x 1)	1	8020 1138 00 00
36	Spring Guide	1	0164 0510 00 00
37	Ball (3mm)	1	9150 1003 00 00
38	Check Valve Assy.	1set	0164 0251 00 99
	(a) Check Valve	1	0164 0251 00 00
	(b) O-Ring (0.7x2x3.4)	2	9010 6020 00 00
39	Main Shaft Assy.	1	0159 0614 00 59
40	Blade	2	0089 0719 03 00
41	Spring (3.1 x 20)	2	8020 1288 00 00
42	Liner Lower Plate Assy.	1set	0164 0426 00 99
	(a) Liner Lower Plate	1	9250 2022 00 00
	(b) Spring Pin (3x8)	1	0081 0010 00 00
43	Oil Plug	1	9010 4025 00 00
44	O-Ring (N3)	2set	0081 0602 00 89
45	Oil Stop Cap Assy.	1	#
	(a) Oil Stop Cap	1	9010 4001 00 00
	(b) O-Ring (N2)	1	9090 2001 00 00
	(c) Back-up Ring (N2)	1	9010 8012 00 00
46	O-Ring (1 x 25.2 x 27.2)	1	9910 0001 00 00
47	X-Ring (2.25 x 2.4 x 12.5)	1	9090 5001 00 00
48	Back-up Ring (12 x 16 x 1)	1	9090 5001 00 00
49	Washer (12.5 x 18 x 0.5)	1	8041 5011 00 00
50	Washer (12.5 x 18 x 1)	1	8041 5021 00 00

The part "\*" can not be supplied individually.  
So please order it as a unit of assembly shown by arrow mark (↑).

**IMPULSE WRENCH**

MODEL (YES.No.)	TOOL No.
Y-T55E (00)	0164 0000 0009
Y-T55A (00)	0164 0000 0001

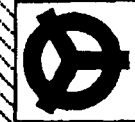
**Exploded View of Liner Case and Hammer Case**



**Parts for Hammer Case**

No.	Name of Parts	Per Set	部品番号
51	Hammer Case Assy.	1set	0259 0401 00 89
	(a) Hammer Case	1	0259 0401 00 00
	(b) Main Shaft Bushing	1	0259 0612 00 00
	(c) Socket Plug	1	8210 8001 00 00
	Y-T55A		
39	Main Shaft	1set	0159 0614 00 51
	Bit Chuck Assy.	1set	2057 0414 00 99
	Bit Chuck	1	2057 0414 00 00
52	Ball	(1/8)	9150 3009 00 00
53	Spring (13.5 x 11.2)	1	8020 1137 00 00
54	Spring Washer	1	2057 0419 00 00
55	Retaining Ring (10 x 1)	1	8030 1009 00 00
	Standard Accessories		
	Touch Joint	1	9690 0002 00 00
	Hex. Wrench (#1.5x65x65)	1	9610 1012 00 00
	Hex. Wrench (#5/32)	1	9610 3008 00 00
	Protector	1	10164 0029 00 00

The part "\*" can not be supplied individually.  
So please order it as a unit of assembly shown by arrow mark (↑).



**YOKOTA EUROPA BV**

P.O. BOX 392 NW-1006 AL AMSTERDAM PHONE 020-5319800 FAX 020-5318808  
Hydraulic Impulse Wrenches, Impact Wrenches, Drills, Grinders, Screw Drivers, Chippers, Saws, Routers