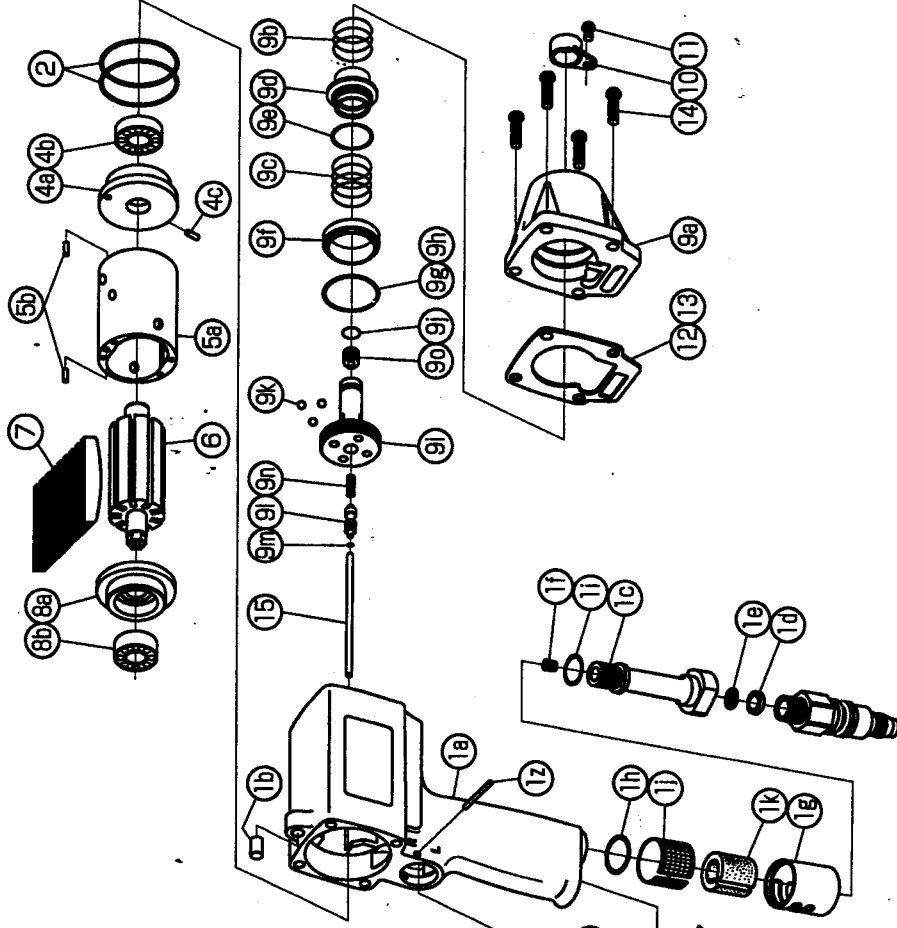


IMPULSE WRENCH

MODEL (YES.No.)	TOOL No.
Y-T70E (01)	0166 0000 0109
Y-T70 (01)	0166 0000 0100

Exploded View of Motor Case



Parts for Motor Case

No.	Name of Parts	Per Set	Parts No.
1	Motor Case Assy.	1set	0166 0011 01 99
	(a) Motor Case	1	0166 0011 00 00
	(b) Spring Pin (6x10)	1	9250 1082 00 00
	Hose Joint Assy.	1set	0166 0113 00 99
	(c) Hose Joint	1	*
	(d) Washer (7.5x11x2)	1	8042 2008 00 00
	(e) Strainer	1	0259 0111 00 00
	(f) Socket Plug	1	8210 8002 00 00
	(g) Exhaust Cover	1	0141 0016 00 00
	(h) O - Ring (N20)	1	9010 4010 00 00
	(i) O - Ring (N15)	1	9010 4008 00 00
	(k) Silencer Sheet(A)	1	0141 0032 00 01
	(k) Silencer Sheet(B)	1	0141 0032 00 02
	Throttle Bushing Assy.	1set	0167 0104 00 99
	(l) Throttle Bushing	1	*
	(m) O - Ring (N16)	1	9010 4009 00 00
	Throttle Rod Bushing Assy.	1set	0167 0105 00 99
	(n) Throttle Rod Bushing	1	*
	(o) O - Ring (P6)	1	9010 1049 00 00
	Throttle Rod Assy.	1set	0167 0106 00 99
	(p) Throttle Rod	1	*
	(q) O - Ring (N3)	1	9010 4051 00 00
	(r) Snap Ring (ETW-2.8)	1	8040 5008 00 00
	(s) Reverse Valve	1	0167 0006 00 00
	(t) Spring (3x4)	1	8020 1246 00 00
	(u) Ball (1/8)	1	9150 3009 00 00
	(v) Reverse Lever	1	2315 0007 00 00
	(w) Spring Pin (2x12)	1	9250 1015 00 00
	(x) Throttle Knob	1	0094 0153 00 00
	(y) Spring Pin (1.5x14)	1	9250 1006 00 00
2	(z) AA Pin (3x23.8)	1	8051 3041 00 00
3	O - Ring (N40)	2	9010 4017 00 00
4	Rubber Grip	1	0141 0144 00 00
	Upper Plate Assy.	1set	0266 0303 00 99
	(a) Upper Plate	1	0135 0303 00 00
	(b) Ball Bearing (6901ZZ)	1	9100 5026 00 00
	(c) AA Pin (2x6.8)	1	8051 3017 00 00
5	Cylinder Assy.	1set	0135 0304 00 99
	(a) Cylinder	1	*
	(b) Pin (2.5x6)	2	8055 1053 00 00
6	Rotor	1	0166 0305 00 00
7	Vane	9	0135 0306 00 00
8	Lower Plate Assy.	1set	0135 0307 01 99
	(a) Lower Plate	1	0135 0307 01 00
	(b) Ball Bearing (6900)	1	9100 1046 00 00
9	Motor Case Cover Assy.	1set	0166 0001 00 99
	(a) Motor Case Cover	1	0166 0001 00 00
	(b) Spring (20.5x12)	1	8020 1262 00 00
	(c) Spring (20.5x15)	1	8020 1261 00 00

No.	Name of Parts	Per Set	Parts No.
10	Cover	1	0235 0708 00 00
11	Screw (M4x6)	1	8071 1004 00 00
★12	S - Packing(A)	1	0166 0003 00 01
★13	S - Packing(C)	1	0166 0003 00 03
14	Screw (M5x18)	4	8071 1012 00 00
15	Rod	1	0166 1368 00 00

The part "*" can not be supplied individually. So please order it as a unit of assembly shown by arrow mark (↑).
 ★marked parts may be not used, in some case.
 ☆marked parts; use one of them.



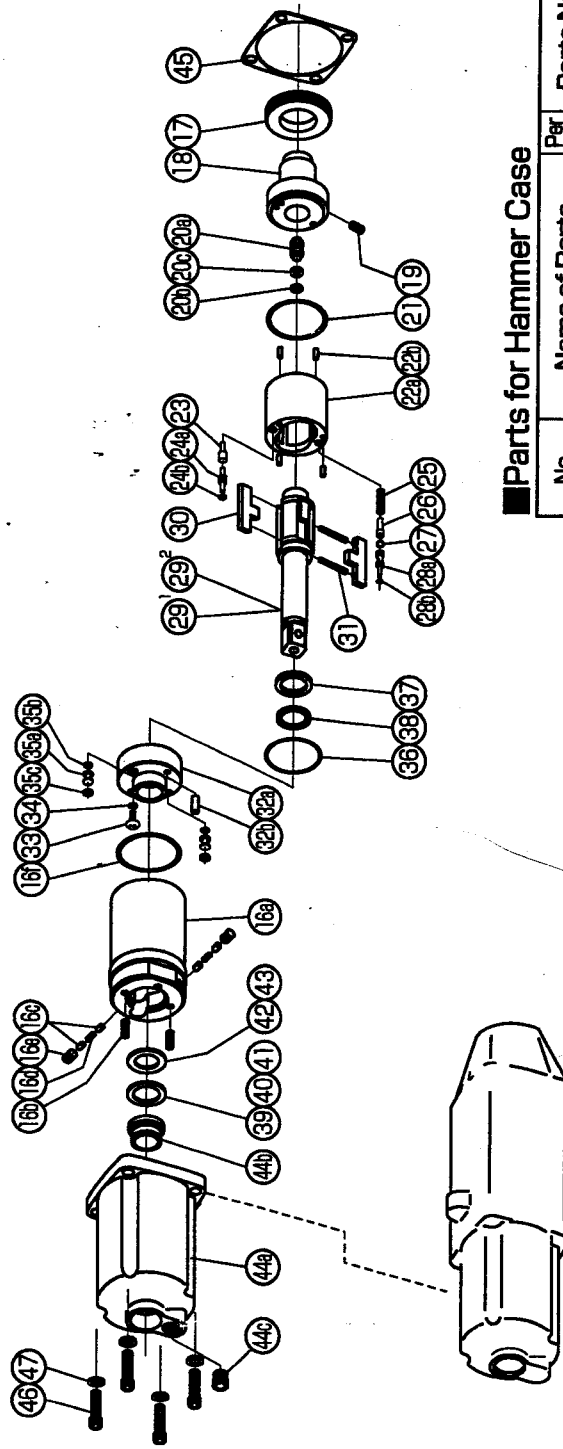
YOKOTA EUROPA BV

P.O. BOX 392 NL-1000 AJ AMSTERDAM PHONE 020-5318900 FAX 020-5318908
 Hydraulic Impulse Wrenches, Impact Wrenches, Drill Grinders, Screw Drivers, Chippers, Sealers, Pumps.

IMPULSE WRENCH

MODEL (YES.No.)	TOOL No.
Y-T70E (01)	0166 0000 0109
Y-T70 (01)	0166 0000 0100

Exploded View of Liner Case and Hammer Case



Parts for Liner Case

No.	Name of Parts	Per Set	Parts No.
16	Liner Case (A) Assy.	1set	0166 0422 00 99
	(a) Liner Case	1	*
	(b) Screw (M3x8)	2	9480 2024 00 00
	(c) Rubber Plate	4	0259 0047 00 00
	(d) Spring (3x5)	2	8020 1288 00 00
	(e) Screw (M4x4)	2	9480 2031 00 00
	(f) O-Ring (N32)	1	9010 4014 00 00
17	Liner Cap	1	0086 0423 00 00
18	Liner Upper Plate	1	0166 0424 00 00
19	Screw (M3x5)	1	9480 2001 00 00
20	Sensor Assy.	1set	0164 0794 00 99
	(a) Sensor	1	0164 0794 00 00
	(b) O-Ring (1.75x3x6.5)	1	9010 6027 00 00
	(c) Back-up Ring (32x6x1.5)	1	9090 2005 00 00
21	O-Ring (1.3x28.7x31.3)	1	9010 6010 00 00
22	Liner Assy.	1set	0166 0425 00 99
	(a) Liner	1	*
	(b) Pin (2.5x6)	4	8051 1072 00 00
23	Relief Valve	1	0086 0245 00 00
24	Spring Guide(B) Assy.	1set	0166 0510 00 99
	(a) Spring Guide(B)	1	0166 0510 00 02
	(b) O-Ring (0.7x2x3.4)	1	9010 6020 00 00
25	Spring (3.4x12.2)	1	8020 1328 00 00
26	Spring Guide	1	0166 0510 01 00
27	Ball (3/32)	1	9150 3001 00 00
28	Check Valve Assy.	1set	0166 0251 00 99
	(a) Check Valve	1	0166 0251 00 00
	(b) O-Ring (0.7x2x3.4)	1	9010 6020 00 00
29*	Main Shaft Assy. (E-type)	1	0281 0614 00 59
30	Blade	2	0086 0719 03 00
31	Spring (3.4x22.7)	2	8020 1253 00 00
32	Liner Lower Plate Assy.	1set	0166 0426 00 99
	(a) Liner Lower Plate	1	*
	(b) Spring Pin (3x8)	1	9250 2022 00 00
33	Oil Plug	1	0081 0010 01 00
34	O-Ring (N3)	1	9010 4025 00 00
35	Oil Stop Cap Assy.	2set	0081 0602 00 99
	(a) Oil Stop Cap	1	*
	(b) O-Ring (N2)	1	9010 4001 00 00
	(c) Back-up Ring (N2)	1	9090 2001 00 00
36	O-Ring (1x29.2x31.2)	1	9010 6022 00 00
37	O-Ring (P12)	1	9011 0001 00 00
38	Back-up Ring (12x16x1)	1	9090 5001 00 00
*39	Washer (12.5x18x0.3)	1	8041 5034 00 00
*40	Washer (12.5x18x0.5)	1	8041 5011 00 00
*41	Washer (12.5x18x1)	1	8041 5021 00 00
*42	ST-Packing (12.5x16x0.2)	1	8011 1011 00 00
*43	ST-Packing (12.5x16x0.3)	1	8011 1012 00 00

The part "*" can not be supplied individually.
So please order it as a unit of assembly shown by arrow mark (↑).
*marked parts; use one of them.

Parts for Hammer Case

No.	Name of Parts	Per Set	Parts No.
44	Hammer Case Assy.	1set	0166 0401 00 99
	(a) Hammer Case	1	0166 0401 00 00
	(b) Main Shaft Bushing	1	0081 0612 00 00
	(c) Socket Plug	1	8210 5001 00 00
45	S-Packing(B)	1	0135 0003 00 02
46	Screw (M5x18)	4	8070 3052 00 00
47	Spring Washer (M5)	4	9200 3005 00 00
29*	Parts for Y-T70	1set	0281 0614 00 01
	Main Shaft	1	0281 0614 00 01
	Standard Accessories		
	Swivel Joint	1	9690 0015 00 00
	Hex. Wrench (H1.5x65x65)	1	9610 1012 00 00
	Hex. Wrench (H5)	1	9610 1006 00 00
	Protector	1	0166 0029 00 00

The part "*" can not be supplied individually.
So please order it as a unit of assembly shown by arrow mark (↑).

YOKOTA EUROPA BV



P.O. BOX 292 NL-1000 AA AMSTERDAM, PHONE 020-5319800, FAX 020-5319808
Hydraulic, Impulse Wrenches, Impact Wrenches, Drills, Sanders, Screw Drivers, Chisels, Sealers, Pumps