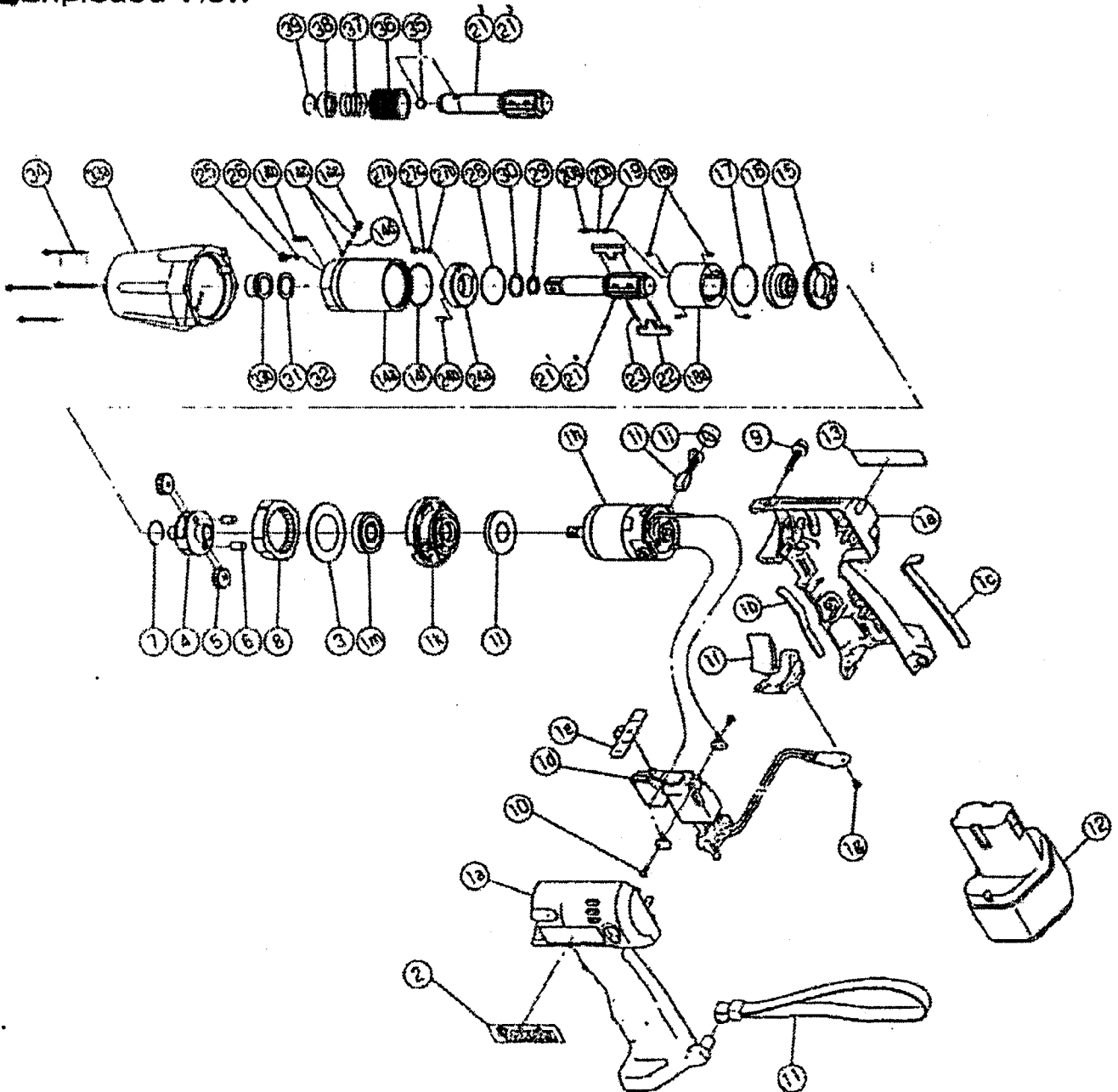




CORDLESS IMPULSE WRENCHES

| MODEL (YES.No.) | TOOL No. |
|-----------------|----------------|
| YBX-50E (00) | 0928 0000 0009 |
| YBX-50A (00) | 0928 0000 0001 |
| YBX-50B (00) | 0928 0000 0002 |
| YBX-50 (00) | 0928 0000 0000 |

Exploded View



YOKOTA EUROPA BV

P.O. BOX 392 NL-1000 AJ AMSTERDAM PHONE 020-5318800 FAX 020-5318808
 e-mail info@impulsetools.com http://www.impulsetools.com

Hydraulic Impulse Wrenches, Impact Wrenches, Drills, Grinders, Screw Drivers, Chippers, Saws, Pumps

Parts List

| No. | Name of Parts | Per Set | Parts No. | No. | Name of Parts | Per Set | Parts No. |
|-----|---------------------------|---------|-----------------|-----------------------------|--------------------------|---------|-----------------|
| 1 | Motor Case Assy | 1set | 0928 0011 00 99 | 26 | O - Ring (N3) | 1 | 9010 4025 00 00 |
| | (a) Motor Case | 1 | 0928 0011 00 00 | 27 | Oil Stop Cap Assy. | 1set | 0081 0602 00 99 |
| | (b) Seal (A) | 1 | * 1 | | (a) Oil Stop Cap | 1 | 0081 0602 00 00 |
| | (c) Seal (B) | 1 | * 1 | | (b) O - Ring (N2) | 1 | 9010 4001 00 00 |
| | (d) Trigger | 1 | 0928 1515 00 00 | | (c) Back-up Ring (N2) | 1 | 9090 2001 00 00 |
| | (e) Reverse Lever | 1 | 0928 0007 00 00 | 28 | O - Ring (1×25.2×27.2) | 1 | 9010 6012 00 00 |
| | (f) Sleeve | 1 | 0928 0313 00 00 | 29 | X - Ring (2.25×2.4×12.5) | 1 | 9910 0001 00 00 |
| | (g) Screw (3.5×6) | 1 | * 1 | 30 | Back-up Ring (12×16×1) | 1 | 9090 5001 00 00 |
| | (h) Motor Assy. | 1 | 0928 0305 00 99 | *31 | Washer (12.5×18×0.5) | 1 | 8041 5011 00 00 |
| | (i) Carbon Bushing | 2 | 8530 6001 00 00 | *32 | Washer (12.5×18×1) | 1 | 8041 5021 00 00 |
| | (j) Bushing Cap | 2 | 8530 6002 00 00 | 33 | Hammer Case Assy. | 1set | 0928 0401 00 99 |
| | (k) Cover Plate | 1 | 0928 0014 00 00 | | (a) Hammer Case | 1 | 0928 0401 00 00 |
| | (l) Rubber Plate | 1 | 0928 1313 00 00 | | (b) Main Shaft Bushing | 1 | 0081 0621 00 00 |
| | (m) Ball Bearing (8001VV) | 1 | 9100 3007 00 00 | 34 | Screw (4×35) | 4 | 9540 1006 00 00 |
| 2 | Logo Mark | 1 | 0928 0981 00 04 | Parts for YBX-50A & YBX-50B | | | |
| 3 | Washer (12.5×20.5×0.8) | 1 | 8041 0007 00 00 | 21' | Main Shaft (A-type) | 1 | 0094 0614 01 51 |
| 4 | Planet Frame | 1 | 0925 0604 00 00 | 21' | Main Shaft (B-type) | 1 | 0094 0614 01 52 |
| 5 | Planet Gear | 2 | 0928 0607 00 00 | 35 | Ball (1/8) | 1 | 9150 3009 00 00 |
| 6 | Pin (5×10) | 2 | 8051 1184 00 00 | 36 | Bit Chuck | 1 | 2057 0414 00 00 |
| 7 | Snap Ring (STW-16) | 1 | 9040 2005 00 00 | 37 | Spring (13.5×11.2) | 1 | 8020 1137 00 00 |
| 8 | Internal Gear | 1 | 0928 0605 00 00 | 38 | Spring Washer | 1 | 2057 0419 00 00 |
| 9 | Screw (4×20) | 7 | 9540 1004 00 00 | 39 | Retaining Ring (10×1) | 1 | 8030 1009 00 00 |
| 10 | Screw (M3×5) | 2 | 9410 1005 00 00 | Parts for YBX-50 | | | |
| 11 | Hanger | 1 | 0928 0017 00 00 | 21' | Main Shaft | 1set | 0925 0614 00 01 |
| 12 | Battery 9.6V | 1 | 8530 3007 00 00 | Standard Accessory | | | |
| 13 | Name Seal | 1 | 0928 0981 00 00 | | Hex. Wrench (H1.5×65×65) | 1 | 9610 1012 00 00 |
| 14 | Liner Case A Assy. | 1set | 0158 0422 00 99 | Optional Accessories | | | |
| | (a) Liner Case | 1 | 0158 0422 00 00 | | Holster | 1 | 0928 1601 00 00 |
| | (b) Screw (M3×8) | 1 | 9480 2024 00 00 | | Hook | 1 | 0928 1602 00 00 |
| | (c) Rubber Plate | 2 | 0258 0047 00 00 | | Battery 9.6V | 1 | 8530 3008 00 00 |
| | (d) Spring (3×5) | 1 | 8020 1288 00 00 | | Charger UC-14YH 100V | 1 | 8530 4009 00 00 |
| | (e) Screw (M4×4) | 1 | 9480 2031 00 00 | | Charger UC-12Y (1H) 100V | 1 | 8530 4004 00 00 |
| | (f) O - Ring (N30) | 1 | 9010 4019 00 00 | | | | |
| 15 | Liner Cap | 1 | 0081 0423 01 00 | | | | |
| 16 | Liner Upper Plate | 1 | 0258 0424 01 00 | | | | |
| 17 | O - Ring (1.5×26.5×29.5) | 1 | 9010 6023 00 00 | | | | |
| 18 | Liner Assy. (6800) | 1set | 0925 0425 00 99 | | | | |
| | (a) Liner | 1 | 0925 0425 00 00 | | | | |
| | (b) AA Pin (2×5) | 4 | 8051 3091 00 00 | | | | |
| 19 | Relief Valve | 1 | 0925 0245 00 00 | | | | |
| 20 | Spring Guide B Assy. | 1set | 0081 0510 01 99 | | | | |
| | (a) Spring Guide B | 1 | 0081 0510 01 02 | | | | |
| | (b) O - Ring (0.7×2×3.4) | 1 | 9010 6020 00 00 | | | | |
| 21' | Main Shaft Assy. (E-type) | 1 | 0925 0614 00 59 | | | | |
| 22 | Blade (6900) | 2 | 0925 0719 02 00 | | | | |
| 23 | Spring (3.1×20) | 2 | 8020 1296 00 00 | | | | |
| 24 | Liner Lower Plate Assy. | 1set | 0158 0426 00 99 | | | | |
| | (a) Liner Lower Plate | 1 | 0158 0426 00 00 | | | | |
| | (b) Spring Pin (3×8) | 1 | 9250 2022 00 00 | | | | |
| 25 | Oil Plug | 1 | 0081 0010 01 00 | | | | |

The part "*" can not be supplied individually.

So please order it as a unit of assembly shown by arrow mark (↑).

☆marked parts; use one of them.