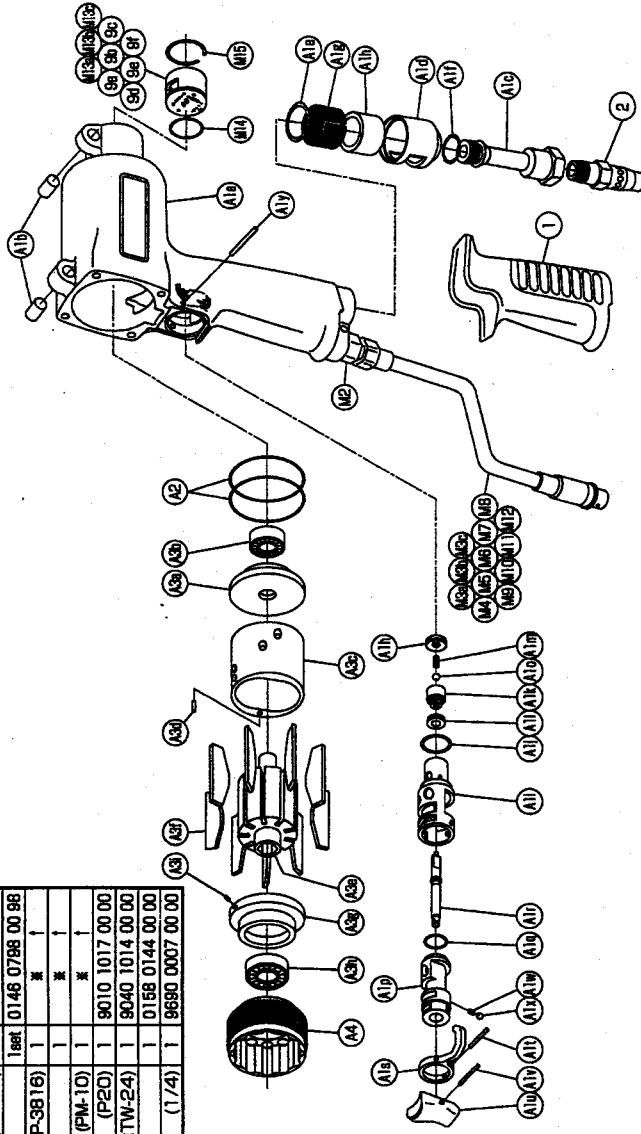


With built-in torque sensor 2 BLADE SYSTEM WRENCH

MODEL (YES.No.)	TOOL No.
YED-61 (00)	0168 0000 0000
YED-61A (00)	0168 0000 0001
YED-61-C (00)	0168 0000 0003
YED-61A-C (00)	0168 0000 0004

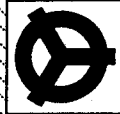
Exploded View of Motor Case



Parts for Motor Case

No.	Name of Parts	Per Set	Parts No.
M	Motor Case Assy.	1set	0168 0011 00 99
M1	Motor Case Assy.(1)	1set	0168 0011 00 99
A1	Motor Case Assy.(2)	1set	0168 0011 00 99
	(a) Motor Case (6 x 10)	2	9250 1082 00 00
	(b) Spring Pin	1	0276 0113 00 00
	(c) Hose Joint	1	0276 0018 00 00
	(d) Exhaust Cover (N20)	1	9010 4010 00 00
	(e) O - Ring (N15)	1	9010 4008 00 00
	(f) Silencer Sheet (A)	1	0168 0032 00 01
	(g) Silencer Sheet (B)	1	0168 0032 00 02
	2 Stage Throttle Assy.	1set	0168 0186 00 99
	(i) Throttle Bushing	1	0158 0104 00 00
	(j) O - Ring (N16)	1	9010 4009 00 00
	Throttle Valve Assy.	1	0158 0108 00 99
	(k) Throttle Valve	1	* 1
	(l) Rubber Pad	1	2331 0678 00 00
	(m) Spring (3.3 x 9.6)	1	8020 1317 00 00
	(n) Throttle Bushing Cap	1	2331 0160 00 00
	(o) Ball (3.5mm)	1	9150 2006 00 00
	(p) Reverse Valve	1	0158 0006 00 00
	(q) O - Ring (N12.6)	1	9010 4006 00 00
	(r) Throttle Rod	1	0158 0106 01 00
	(s) Reverse Lever	1	0168 0007 00 00
	(t) Spring Pin (2 x 12)	1	9250 1015 00 00
	(u) Throttle Knob	1	0168 0153 00 00
	(v) Spring Pin (1.5 x 14)	1	9250 1005 00 00
	(w) Spring (3 x 4)	1	8020 1246 00 00
	(x) Ball (1/8)	1	9150 3009 00 00
	(y) Pin (2.5 x 22)	1	8055 1082 00 00
A2	O - Ring (N4.0)	2	9010 4017 00 00
A3	Motor Assy.	1set	0168 0305 00 99
	Upper Plate Assy.	1set	0270 0303 01 99
	(a) Upper Plate	1	0270 0303 01 00
	(b) Ball Bearing (697)	1	9100 1060 00 00
	Cylinder Assy.	1set	0168 0304 00 99
	(c) Cylinder	1	* 1
	(d) Pin (2.5 x 6)	1	8055 1059 00 00
	(e) Rotor	1	0270 0305 01 00
	(f) Vane	9	0270 0306 00 00
	Lower Plate Assy.	1set	0270 0307 01 99
	(g) Lower Plate	1	0270 0307 01 00
	(h) Ball Bearing (6901)	1	9100 1058 00 00
	(i) Pin (2.5 x 6)	1	8055 1053 00 00
A4	Lower Plate Spacer	1	0168 0311 00 00

The part "*" can not be supplied individually. So please order it as a unit of assembly shown by arrow mark (1).



YOKOTA EUROPA BV

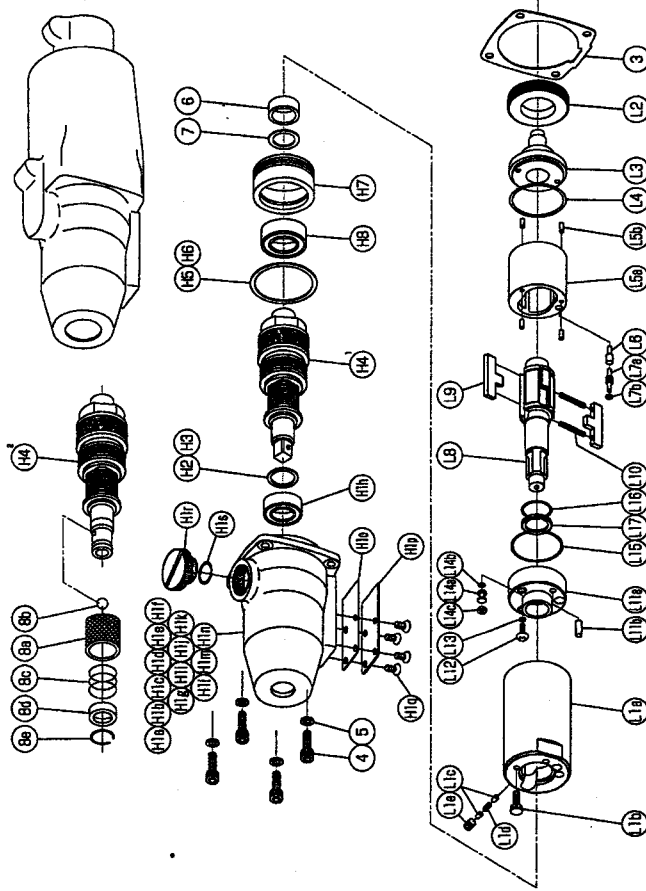
P.O. BOX 392 NL-1000 AJ AMSTERDAM PHONE 020-5318800 FAX 020-5318809
 e-mail: info@impulsetools.com http://www.impulsetools.com
 Hydraulic Linchpins, Wrenches, Impact Wrenches, Drills, Grinders, Screw Drivers, Chippers & Scrapers, Pumps



With built - in torque sensor 2 BLADE SYSTEM WRENCH

MODEL (YES.No.)	TOOL No.
YED-61 (00)	0168 0000 0000
YED-61A (00)	0168 0000 0001
YED-61-C (00)	0168 0000 0003
YED-61A-C (00)	0168 0000 0004

Exploded View of Liner Case and Hammer Case



Parts for Liner Case

No.	Name of Parts	Per Set	Parts No.
L	Liner Case Assy.	1set	0168 0422 00 99
L1	Liner Case Assy.(1)	1set	0168 0422 00 99
	(a) Liner Case	1	*
	(b) Adjust Bolt	1	0083 0522 00 00
	(c) Rubber Plate (3x5)	2	0259 0047 00 00
	(d) Spring	1	8020 1288 00 00
	(e) Hexagon Socket Set Screw (M4x4)	1	9480 2031 00 00
L2	Liner Cap	1	0081 0423 01 00
L3	Liner Upper Plate	1	0168 0424 00 00
L4	O - Ring (1.5x26.5x29.5)	1	9010 8023 00 00
L5	Liner Assy.	1set	0259 0425 00 99
	(a) Liner	1	*
	(b) AA Pin (2x5)	4	8051 3091 00 00
L6	Relief Valve	1	0081 0245 01 00
L7	Spring Guide (B) Assy.	1set	0168 0510 00 99
	(a) Spring Guide (B)	1	*
	(b) O - Ring (0.7x2x3.4)	2	9010 8020 00 00
L8	Liner Shaft	1set	0168 0796 00 00
L9	Blade	2	0081 0719 03 00
L10	Spring (3.1x20)	2	8020 1296 00 00
L11	Liner Lower Plate Assy.	1set	0168 0426 00 99
	(a) Liner Lower Plate	1	*
	(b) Spring Pin (3x8)	1	9250 2022 00 00
L12	Oil Plug	1	0081 0010 01 00
L13	O - Ring (N3)	1	9010 4025 00 00
L14	Oil Stop Cap Assy.	1set	0081 0602 00 99
	(a) Oil Stop Cap	1	*
	(b) O - Ring (N2)	1	9010 4001 00 00
	(c) Back-up Ring (N2)	1	9090 2001 00 00
L15	O - Ring (1x25.2x27.2)	1	9010 6012 00 00
L16	O - Ring (P12)	1	9010 1050 00 00
L17	Back-up Ring (12x16x1)	1	9090 5001 00 00
3	S - Packing (A)	1	0168 0003 00 01
4	Bolt with Hex. Hole (M4 x 1.4)	4	8070 3008 00 00
5	Spring Washer (M4)	4	9200 3004 00 00

The part "*" can not be supplied individually.
So please order it as a unit of assembly shown by arrow mark (↑).

Parts for Hammer Case

No.	Name of Parts	Per Set	Parts No.
H	Hammer Case Assy.	1set	0168 0401 00 99
H1	Hammer Case Assy.(1)	1	0168 0401 00 99
	(a) Hammer Case (2x4)	1	*
	(c) Core (A) Assy.	1set	*
	(d) Core (B)	1	*
	(e) Spacer (A)	1	*
	(f) Core (C)	1	*
	(g) Core (D) Assy.	1set	*
	(h) Ball Bearing (6801ZZ)	1	*
	(i) Hexagon Socket Set Screw (M4x5)	1	*
	(j) Shrinkage Tube (φ 1.5x9)	4	*
	(k) Shrinkage Tube (φ 2x9)	4	*
	(l) Micro Connector (OX-202)	4	8500 4001 00 00
	(m) Micro Connector (PM-10)	1	8500 2001 00 00
	(n) Isolation Sheet	1	0168 1525 00 00
	(o) S - Packing (B)	1	0168 0003 00 02
	(p) Cover Plate	1	0168 0014 00 00
	(q) Cross Recessed Head Screw (M8x6)	4	9440 2001 00 00
	(r) Regulator Cap	1	0143 0204 00 00
*H2	O - Ring (N12)	1	9010 4005 00 00
*H3	ST-Packing (12.5x16x0.1)	1	8011 1084 00 00
*H4	ST-Packing (12.5x16x0.2)	1	8011 1011 00 00
*H5	Main Shaft Assy.	1	0270 0614 00 99
*H6	C-Packing (30.5x35x0.1)	1	8010 1297 00 00
*H7	C-Packing (30.5x35x0.2)	1	8010 1143 00 00
H8	Bearing Case (6902ZZ)	1	0270 0650 00 00
H9	Ball Bearing (12.3x16x9)	1	9100 5032 00 00
7	Washer (11.5x16x0.5)	1	8040 8031 00 00
	Washer (11.5x16x0.5)	1	8041 5022 00 00
H'	Hammer Case Assy.	1set	0168 0401 00 99
H4*	Main Shaft Assy. (A-type)	1set	0270 0614 00 99
8	Bit Chuck Assy.	1set	2057 0414 00 99
	(a) Bit Chuck	1	2057 0414 00 00
	(b) Ball (1/8)	1	9150 3009 00 00
	(c) Spring (13.5x11.2)	1	8020 1137 00 00
	(d) Spring Washer	1	2057 0419 00 00
	(e) Retaining Ring (10x1)	1	8030 1009 00 00
M	LAMP VERSION		
9	Motor Case Assy.	1set	0168 0011 00 96
	Lamp Assy.	1set	0146 0859 00 99
	(a) Lamp Holder	1	*
	(b) LED (TLRH156P)	2	*
	(c) LED (TLGD135AP)	2	*
	(d) Print Basic (C)	1	*
	(e) Resistance (620Ω/1/4W)	1	*
	(f) Micro Connector (PM-10)	1	*
	Standard Accessories		
	TF-Pin (2x90)	1	8051 6001 00 00
	Protector	1	0168 0029 00 00

YOKOTA EUROPA BV

P.O. BOX 392 NL-1000 A.J. AMSTERDAM. PHONE 020-531 8800. FAX 020-531 8808
e-mail: info@impulsetools.com; http://www.impulsetools.com
Hydraulic Impact Wrenches, Impact Wrenches, Drill Grinders, Screw Drivers, Chisels, Scales, Pulmors



The part "*" can not be supplied individually.
So please order it as a unit of assembly shown by arrow mark (↑).

*marked parts may be not used, in some case.
01680-P0109