

With built-in torque sensor

2 BLADE SYSTEM WRENCHES

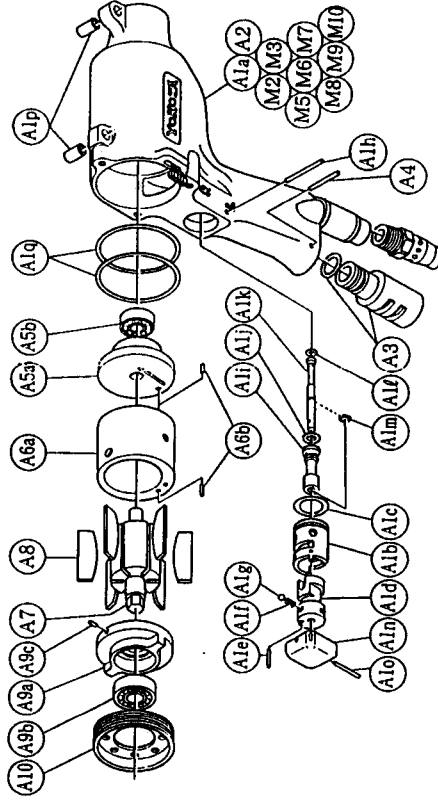
MODELS (YES. No.)	TOOL No.
YEX-120 (0.2)	0269 0000 02 00
YEX-120A (0.2)	0269 0000 02 01

Parts for Motor Case

No.	Name of Parts	Per Set	Parts No.
M	Motor Case Assy.	1set	0269 0011 01 99
M1	Motor Case (A) Assy.	1set	0269 0011 00 99
A1	Motor Case (B) Assy.	1set	0093 0011 00 97
	(a) Motor Case	1	0093 0011 00 00
	Throttle Bushing Assy.	1set	0093 0104 00 99
	(b) Throttle Bushing	1	*
	(c) O Ring (N15)	1	9010 4008 00 00
	(d) Reverse Valve	1	0093 0005 00 00
	(e) Spring Roll Pin (2.5 x 12)	1	9250 1024 00 00
	(f) Spring (3 x 4)	1	8020 1246 00 00
	(g) Ball (1/8)	1	9150 3009 00 00
	(h) AA Pin (3 x 23.8)	1	8951 3041 00 00
	Throttle Rod Bushing Assy.	1set	0078 0105 00 99
	(i) Throttle Rod Bushing	1	*
	(j) O Ring (No.3)	1	9010 3021 00 00
	Throttle Rod Assy.	1	2058 0106 00 99
	(k) Throttle Rod	1	*
	(l) O Ring (N2)	1	9010 4001 00 00
	(m) Snap Ring (ETW-2.8)	1	9040 5008 00 00
	(n) Throttle Knob	1	0093 0153 00 00
	(o) Spring Roll Pin (1.5 x 14)	1	9250 1005 00 00
	(p) Spring Roll Pin (6 x 10)	2	9250 2012 00 00
	(q) O Ring (N40)	2	9010 4017 00 00
A2	Hose Joint	1	0269 0113 00 00
A3	Stencor Assy.	1set	0081 0053 00 99
A4	Spring Roll Pin (3 x 16)	1	9250 1050 00 00
A5	Upper Plate Assy.	1set	0093 0303 01 99
	(a) Upper Plate	1	0093 0303 01 00
	(b) Ball Bearing (697)	1	9100 1060 00 00
A6	Cylinder Assy.	1set	0093 0304 01 99
	(a) Cylinder	1	*
	(b) Spring Roll Pin (2 x 6)	2	9250 1011 00 00
A7	Rotor	1	0083 0305 00 00
A8	Wane	6	0093 0306 00 00
A9	Lower Plate Assy.	1set	0093 0307 00 99
	(a) Lower Plate	1	0093 0307 00 00
	(b) Ball Bearing (6900)	1	9100 1046 00 00
A10	Lower Plate Spacer	1	8055 1053 00 00
	(c) FF Pin (2.5 x 6)	1	0093 0311 00 00
M2	Holder Assy.	1set	0270 0717 00 99
M3	Tube (φ 3 x 15)	1	9380 5007 00 00
M5	Tube (φ 1.5 x 10)	4	9380 5008 00 00
M6	Micro Connector (PM-10)	1	8500 2001 00 00
M7	Buzzer (RKBB-4A16)	1	8440 1001 00 00
M8	Print Base (A)	1	0127 0798 00 01
M9	O Ring (P20)	1	9010 1017 00 00
M10	Snap Ring (RTW-24)	1	9040 1014 00 00

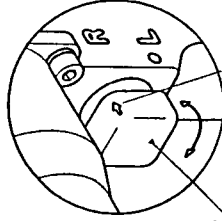
The part * can not be supplied individually. So please order it as a unit of assembly shown by arrow mark (↑).

Exploded View of Motor Case



ATTENTION

- Don't loosen torque adjustment screw more than 3turns from the maximum position. (full-closed position)
- Turn throttle knob to select the forward/reverse rotation. Forward rotation is to be selected with arrow mark engraved on the throttle knob being on the "R" side, and for reverse rotation to select, arrow mark is to be on the "L" side.



Throttle knob

Arrow mark engraved



YOKOTA EUROPA BV

P.O. BOX 392 NL - 1000 AJ AMSTERDAM PHONE 020 - 625 29 53 FAX 020 - 625 35 69
Hydraulic Impulse Wrenches, Impact Wrenches, Drills, Grinders, Screw drivers, Chippers, Sclers, Pumps.

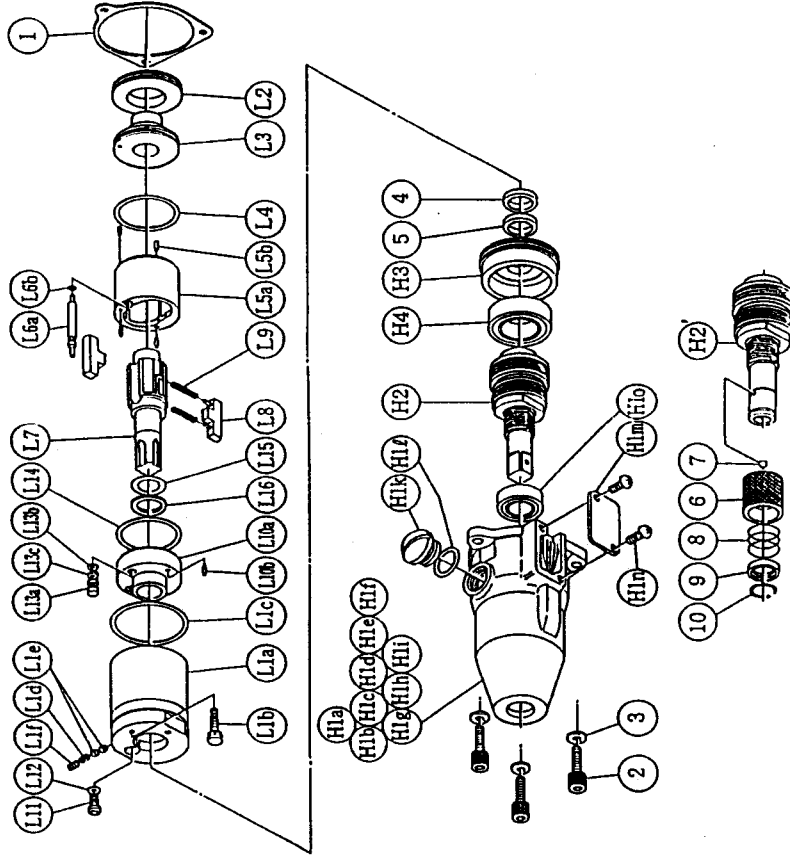


With built-in torque sensor

2 BLADE · SYSTEM WRENCHES

MODELS (YES. No.)	TOOL No.
YEX-120 (0.2)	0269 0000 02 00
YEX-120A (0.2)	0269 0000 02 01

Exploded View of Liner Case and Hammer Case



Parts for Liner Case

No.	Name of Parts	Per Set	Parts No.
L1	Liner Case Assy.	1st	0265 0422 01 98
	Liner Case (A) Assy.	1st	0393 0422 01 98
	(a) Liner Case	1	*
	(b) Adjust Bolt	1	0093 0522 00 00
	(c) O Ring (N30)	1	9010 4019 00 00
	(d) Spring (2.4 x 8)	1	8020 1267 00 00
	(e) Rubber Plate	2	0081 0047 00 00
	(f) Screw (M3 x 4)	1	9480 2028 00 00
L2	Liner Cap	1	0081 0423 01 00
L3	Liner Upper Plate	1	0259 0424 01 00
L4	O Ring (1.5 x 26.5 x 29.5)	1	9010 6023 00 00
L5	Liner Assy.	1st	0136 0425 00 99
	(a) Liner	1	*
	(b) AA Pin (2 x 5)	4	8051 3091 00 00
L6	Relief Valve Assy.	1st	0265 0245 00 99
	(a) Relief Valve	1	*
	(b) O Ring (0.7 x 2 x 3.4)	1	9010 6020 00 00
L7	Liner Shaft	1	0079 0796 02 00
L8	Blade	2	0088 0719 03 00
L9	Spring (3.1 x 20)	2	8020 1296 00 00
L10	Liner Lower Plate Assy.	1st	0081 0426 01 99
	(a) Liner Lower Plate	1	*
	(b) Spring Roll Pin (3 x 6)	1	9250 2022 00 00
L11	Oil Plug	1	0081 0010 00 00
L12	O Ring	1	9010 4025 00 00
L13	Oil Stop Cap Assy.	1st	0081 0682 00 99
	(a) Oil Stop Cap	1	*
	(b) O Ring (N2)	1	9010 4001 00 00
	(c) Backup Ring (N2)	1	9090 2001 00 00
L14	O Ring (1 x 25.2 x 27.2)	1	9010 6012 00 00
L15	O Ring (2.3 x 11.8 x 16.4)	1	9010 6019 00 00
L16	Backup Ring (12 x 16 x 0.8)	1	9090 1010 00 00
1	S-Packing	1	0053 0003 00 00

The part "*" can not be supplied individually.
So please order it as a unit of assembly
shown by arrow mark (↑).

Parts for Hammer Case

No.	Name of Parts	Per Set	Parts No.
H	Hammer Case Assy.	1st	0265 0401 00 99
H1	Hammer Case (A) Assy.	1st	0265 0401 00 98
	(b) Hammer Case	1st	*
	(a) Core (A) Assy.	1	*
	(c) Core (B)	1	*
	(d) Spacer (A)	1	*
	(e) Core (C)	1	*
	(f) Core (D) Assy.	1	*
	(g) Screw (M4 x 5)	1	*
	(h) Micro Connector (OX-202)	4	*
	(i) Tube (φ 1.5 x 9)	4	*
	(k) Regulator Cap	1	0093 0204 00 00
	(l) O Ring (N10)	1	9010 4004 00 00
	(m) Cover Plate (M4 x 8)	1	0093 0014 00 00
	(n) Screw (M4 x 8)	2	9410 2004 00 00
	(o) Ball Bearing (6801ZZ)	1	9100 5028 00 00
H2	Main Shaft Assy.	1st	0093 0614 00 99
H3	Bearing Case	1	0093 0650 00 00
H4	Ball Bearing (6903ZZ)	1	9100 5025 00 00
2	Hex Socket Bolt (M4 x 14)	3	8070 3008 00 00
3	Spring Washer (M4)	3	9200 3004 00 00
4	Washer (12.3 x 16 x 0.1)	1	8040 6025 00 00
5	Washer (12.5 x 18 x 0.5)	1	8041 5011 00 00
Exclusive use for YEX-120A			
H'	Hammer Case Assy.(A type)	1st	0265 0401 00 89
H2'	Main Shaft Assy.(A type)	1st	0093 0614 00 89
6	Bit Chuck	1	2057 0414 00 00
7	Ball (1/8)	1	9150 3009 00 00
8	Spring (13.5 x 11.2)	1	8020 1137 00 00
9	Spring Washer	1	2057 0419 00 00
10	Retaining Ring (10 x 1)	1	8030 1009 00 00
Standard Accessories			
	Touch Joint (1/4-07)	1	9690 0007 00 00
	TF Pin (φ 2 x 90)	1	8051 8001 00 00

The part "*" can not be supplied individually.
So please order it as a unit of assembly
shown by arrow mark (↑).



YOKOTA EUROPA BV

P.O. BOX 392 NL - 1000 AJ AMSTERDAM PHONE 020 - 625 29 53 FAX 020 - 625 35 86
Hydraulic Impulse Wrenches, Impact Wrenches, Drills, Grinders, Screw drivers, Chippers, Scales, Pumps.