

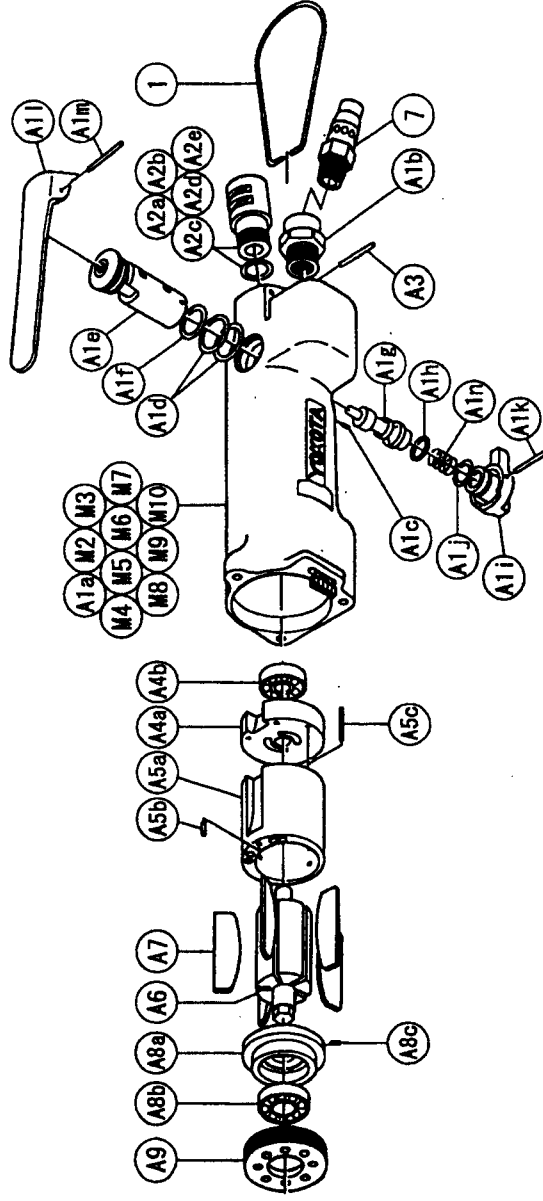
SYSTEM WRENCH

MODELS (YES/No.)	TOOL No.
YEX-120S (03)	0265 0000 03 00
YEX-120SA (03)	0265 0000 03 01
YEX-120S-G (03)	0265 0000 03 11

Parts for Motor Case

No.	Name of Parts	Per set	Parts No.	No.	Name of Parts	Per set	Parts No.
M	Motor Case Assy.	1 set	0265 0011 01 99	M6	Micro Connector PM-10	1	8500 2001 00 00
M1	Motor Case Assy. (1)	1 set	0265 0011 01 69	M7	Buzzer PKB24SP-3816	1	8440 1001 00 00
A1	Motor Case (B) Assy.	1 set	0265 0011 00 97	M8	Print Basic A	1	0127 0798 00 01
	a) Motor Case	1	*	M9	O-Ring P20	1	9010 1017 00 00
	b) Hose Joint	1	0237 0113 00 00	M10	Snap Ring RTW-24	1	9040 1014 00 00
	c) S.R.Pin 2X5	1	9250 1010 00 00				
	d) O-Ring N15	2	9010 4008 00 00				
	Reverse Valve Assy.	1 set	0265 0005 01 99				
	e) Reverse Valve	1	0265 0005 01 00				
	f) O-Ring N12.5	1	9010 4008 00 00				
	Throttle Rod Assy.	1 set	0265 0108 00 99				
	g) Throttle Rod	1	*				
	h) O-Ring No.3 (Hs90)	1	9010 3021 00 00				
	Reverse Lever Assy.	1 set	0084 0007 00 99				
	i) Reverse Lever	1	*				
	j) O-Ring P8	1	9010 1006 00 00				
	k) S.R.Pin 2X20	1	9250 1021 00 00				
	l) Throttle Lever	1	0931 0110 00 00				
	m) S.R.Pin 3X25	1	9250 1056 00 00				
	n) Spring 8X14	1	8020 1287 00 00				
A2	Silencer Assy.	1 set	0081 0053 00 99				
	a) Silencer Body	1	*				
	b) O-Ring N10	1	9010 4004 00 00				
	c) Silencer Sheet B	1	0095 0032 00 02				
	d) Silencer Cap	1	2306 0084 00 00				
	e) Snap Ring RTW-14	1	9040 1008 00 00				
A3	S.R.Pin 3X16	1	9250 1050 00 00				
A4	Upper Plate Assy.	1 set	0081 0303 01 99				
	a) Upper Plate	1	0081 0303 01 00				
	b) Ball Bearing 697MC2	1	9102 3001 00 00				
A5	Cylinder Assy.	1 set	0088 0304 01 99				
	a) Cylinder	1	*				
	b) S.R.Pin 2.5X6	1	9250 1030 00 00				
	c) S.R.Pin 2X12	1	9250 1015 00 00				
A6	Rotor	1	0088 0305 00 00				
A7	Vane	5	0088 0308 01 00				
A8	Lower Plate Assy.	1 set	0099 0307 01 99				
	a) Lower Plate	1	0099 0307 01 00				
	b) Ball Bearing 6900CM	1	9102 1001 00 00				
	c) Pin 2.5X6	1	8055 1053 00 00				
A9	Lower Plate Spacer	1	0099 0311 00 00				
	Connector Assy.	1 set	8450 1001 00 99				
M2	Contraction Tube 8X25	1	9380 5006 00 00				
M3	Contraction Tube 3X15	1	9380 5007 00 00				
M4	Contraction Tube 1.5X10	4	9380 5008 00 00				

The part "*" can not be supplied individually.
So please order it as a unit of assembly
shown by arrow mark (↑).



YOKOTA EUROPE BV

e-mail info@impulsetools.com <http://www.impulsetools.com>
P.O. BOX 392 NL-1000 AJ AMSTERDAM PHONE: 020-625 29 53 FAX: 020-625 35 69
Hydraulic Impulse Wrenches, Impact Wrenches, Drills, Grinders, Screw Drivers, Chippers, Scales, Pumps.



Parts for Liner Case

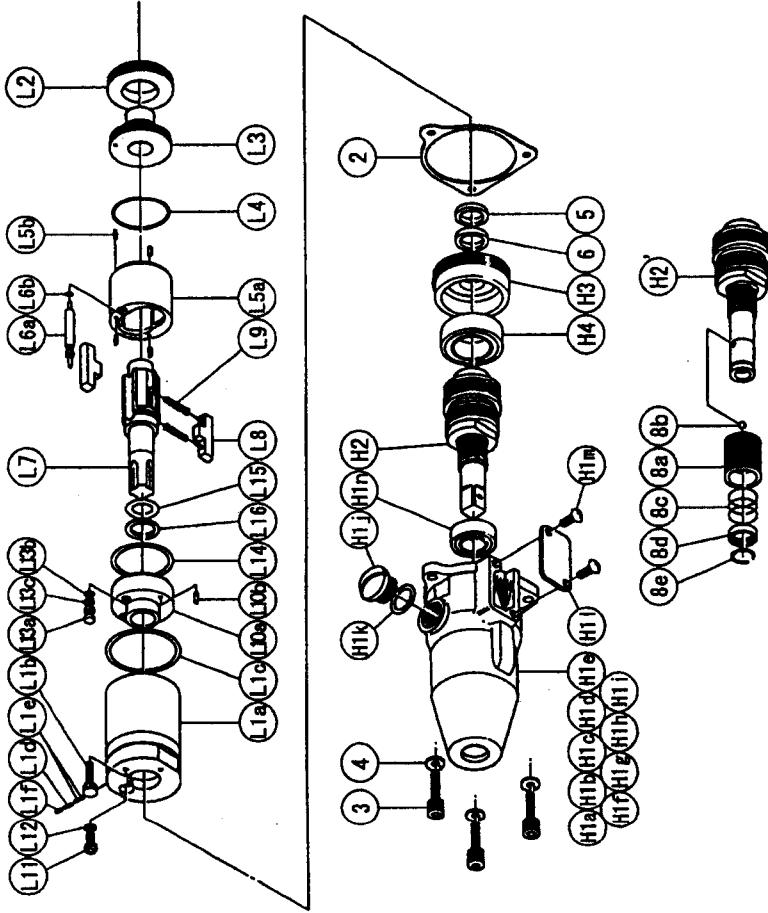
No.	Name of Parts	Per set	Parts No.
L1	Liner Case Assy.	1 set	0265 0422 0599
	Liner Case (A) Assy.	1 set	0093 0422 0398
	Liner Case	1	*
	a)Adjust Bolt M3X8 P=0.5	1	0093 0522 0100
	c)O-Ring N30	1	9010 4019 00 00
	d)Spring 2.4X6	1	8020 1267 00 00
	e)Rubber Plate	2	0081 0047 00 00
	f)Screw M3X3 P=0.5	1	9490 2028 00 00
L2	Liner Cap	1	0061 0423 01 00
L3	Liner Upper Plate	1	0259 0424 01 00
L4	O-Ring 1.5X26.5X29.5	1	9010 8023 00 00
L5	Liner Assy.	1 set	0136 0425 01 99
	a)Liner	1	*
	b)AA Pin 2X5 <41-44HRC>	4	8052 3002 00 00
L6	Relief Valve Assy.	1 set	0265 0245 00 99
	a)Relief Valve	1	*
	b)O-Ring 0.7X2X3.4	1	9010 8020 00 00
L7	Liner Shaft	1	0079 0796 02 00
L8	Blade	2	0088 0719 03 00
L9	Spring 3.1X20	2	8020 1298 00 00
L10	Liner Lower Plate Assy.	1 set	0158 0426 00 99
	a)Liner Lower Plate	1	*
	b)S.R.Pin 3X8	1	9250 2022 00 00
L11	Oil Plug	1	0081 0010 01 00
L12	O-Ring N3	1	9010 4025 00 00
L13	Oil Stop Cap Assy.	1 set	0081 0602 00 99
	a)Oil Stop Cap	1	*
	b)O-Ring N2	1	9010 4001 00 00
	c)Back-Up Ring	1	9090 2001 00 00
L14	O-Ring 1X25.2X27.2	1	9010 8012 00 00
L15	O-Ring 2.3X11.8X16.4	1	9010 8019 00 00
L16	Back-Up Ring 12X18X0.8	1	9090 1010 00 00
2	S-Packing	1	0093 0003 00 00

The part "*" can not be supplied individually.
Please order it as a unit of assembly
shown by arrow mark (↑).

SYSTEM WRENCH

MODELS (YES/No.)	TOOL No.
YEX-120S (03)	0265 0000 03 00
YEX-120SA (03)	0265 0000 03 01
YEX-120S-G (03)	0265 0000 03 11

Exploded View of Liner Case and Hammer Case



Parts For Hammer Case

No.	Name of Parts	Per set	Parts No.
H	Hammer Case Assy.	1 set	0265 0401 01 99
H1	Hammer Case (A) Assy.	1 set	0265 0401 00 98
	a)Hammer Case	1	*
	b)Core A Assy.	1 set	*
	c)Core B	1	*
	d)Spacer A	1	*
	e)Core C	1	*
	f)Core D Assy.	1 set	*
	g)Screw M4X5 P=0.7	1	9480 1006 00 00
	h)Micro Connector OX-202	4	8500 4001 00 00
	i)Contraction Tube 1.5'X9	4	9380 5010 00 00
	j)Regulator Cap	1	0093 0204 00 00
	k)O-Ring N10	1	9010 4004 00 00
	l)Cover Plate	1	0093 0014 00 00
	m) Screw M4X8 P=0.7	2	9410 2004 00 00
	n)Ball Bearing 6801ZZ	1	9100 5028 00 00
H2	Main Shaft Assy.	1 set	0093 0614 01 99
H3	Bearing Case	1	0093 0650 00 00
H4	Ball Bearing 6903ZZ	1	9100 5025 00 00
3	Hex. Bolt M4X14 P=0.7	3	8070 3008 00 00
4	Spring Washer M4	3	9200 3004 00 00
5	Washer 12.3X16X6.1	1	8040 6025 00 00
6 1	Washer 12.5X18X0.5	1	8041 5011 00 00
6 2	Washer 12.5X18X0.3	1	8041 5034 00 00
7	Touch Joint 1/4-07	1	9690 0007 00 00
	Standard Accessories		
	TF Pin 2X90	1	8051 8001 00 00
1	Hanger	1	0004 0017 00 00
Parts for YEX-120SA <03>			
H'	Hammer Case Assy.	1 set	0265 0401 00 89
H2	Main Shaft Assy.	1 set	0093 0614 00 89
8	Bit Chuck Assy.	1 set	2057 0414 00 99
	a)Bit Chuck	1	2057 0414 00 00
	b)Ball 1/8 S	1	9150 3009 00 00
	c)Spring 13.5X10	1	8020 1340 00 00
	d)Spring Washer	1	2331 0419 00 00
	e)Retaining Ring 10X1	1	8030 1009 00 00
Parts for YEX-120S-G <03>			
H''	Hammer Case Assy.	1 set	0269 0401 01 35
H1'	Hammer Case Assy. (1)	1 set	0269 0401 00 89
	a)Hammer Case A	1	*

The part "*" can not be supplied individually.

So please order it as a unit of assembly shown by arrow mark (↑).

* marked parts; use one of them.

YOKOTA EUROPE BV



e-mail info@impulsetools.com http://www.impulsetools.com

P.O. BOX 362 NL-1000 AJ AMSTERDAM PHONE: 020-625 28 53 FAX: 020-625 35 69
Hydraulic Impulse Wrenches, Impact Wrenches, Drills, Grinders, Screw Drivers, Chippers, Saws, Pumps.