

Parts for Motor Case

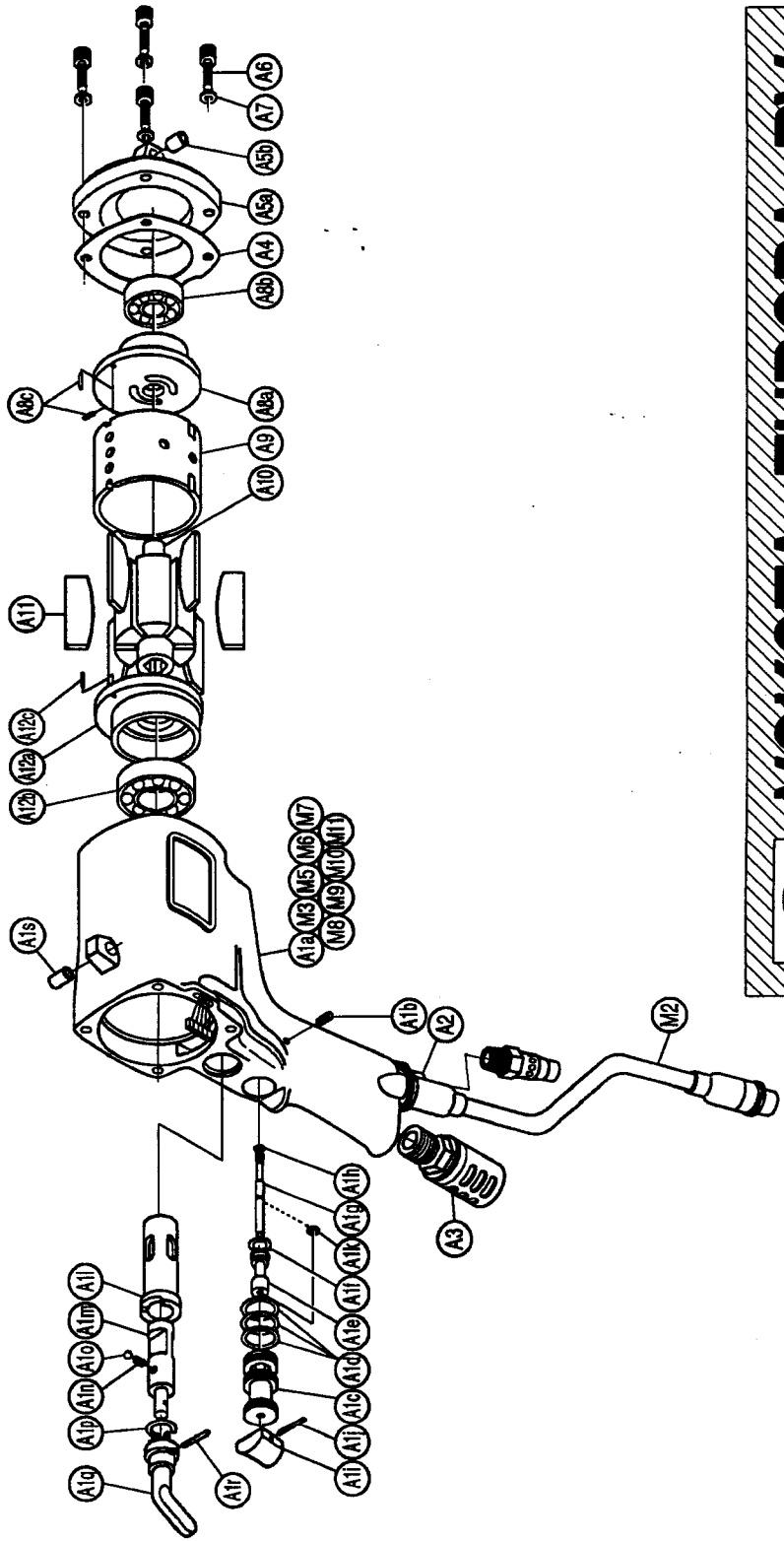
No.	Name of Parts	Per Set	Parts No.
M6	Micro Connector (PM-10)	1	8500 2001 00 00
M7	Socket Contact (170205-1)	2	8480 1001 00 00
M8	Socket Housing (171822-2)	1	8470 1001 00 00
M9	Buzzer Base Assy.	1set	0234 0798 00 98
M10	O Ring (P20)	1	9010 1017 00 00
M11	Snap Ring (RTW-24)	1	9040 1014 00 00

With built-in torque sensor

2 BLADE SYSTEM WRENCH

MODEL (YES. NO.)	TOOL NO.
YEX-1400 (03)	0323 0000 03 00

Exploded View of Motor Case



No.	Name of Parts	Per Set	Parts No.
M	Motor Case Assy.	1set	0323 0011 01 99
M1	Motor Case A Assy.	1set	0323 0011 00 98
A1	Motor Case B Assy.	1set	0323 0011 00 97
	(a) Motor Case	1	0323 0011 00 00
	(b) Screw (M5 x 8)	1	9480 1010 00 00
	Throttle Bushing Assy.	1set	0229 0104 00 99
	(c) Throttle Bushing	1	※
	(d) O Ring (N15)	3	9010 4008 00 00
	Throttle Rod Bushing Assy.	1set	0323 0105 00 99
	(e) Throttle Rod Bushing	1	※
	(f) O Ring (No.5)	1	9010 3022 00 00
	Throttle Rod Assy.	1set	0229 0106 00 99
	(g) Throttle Rod	1	※
	(h) O Ring (N2)	1	9010 4001 00 00
	(i) Throttle Knob	1	2024 0153 00 00
	(j) Spring Pin (1.5 x 14)	1	9250 1005 00 00
	(k) Snap Ring (ETW-2.8)	1	9040 5008 00 00
	(l) Reverse Bushing	1	0229 0004 00 00
	(m) Reverse Valve	1	0323 0005 00 00
	(n) Spring (4 x 6)	1	8020 1022 00 00
	(o) Ball (4mm)	1	9150 1005 00 00
	(p) Snap Ring (IRYW-14)	1	9040 3004 00 00
	(q) Reverse Lever	1	0048 0007 01 00
	(r) Spring Pin (3 x 14)	1	9250 1049 00 00
	(s) Spring Pin (8 x 10)	1	9250 2017 00 00
A2	Hose Joint	1	0078 0113 00 00
A3	Silencer Assy.	1set	0405 0553 01 99
A4	S-Packing A	1	0323 0003 00 01
A5	Motor Case Cover Assy.	1set	0323 0001 00 99
	(a) Motor Case Cover	1	※
	(b) Spring Pin (8 x 10)	1	9250 2017 00 00
A6	Hex. Socket Bolt (M5 x 18)	4	8070 3052 00 00
A7	Spring Washer (M6)	4	9200 3005 00 00
A8	Upper Plate Assy.	1set	0941 0303 01 99
	(a) Upper Plate	1	0941 0303 01 00
	(b) Ball Bearing (6201)	1	9100 1021 00 00
	(c) Spring Pin (2 x 6)	2	9250 6002 00 00
A9	Cylinder	1	0322 0304 00 00
A10	Rotor	1	0322 0305 00 00
A11	Vane	6	0322 0306 00 00
A12	Lower Plate Assy.	1set	0941 0307 01 99
	(a) Lower Plate	1	0941 0307 01 00
	(b) Ball Bearing (6004)	1	9100 1019 00 00
	(c) Spring Pin (2 x 6)	1	9250 6002 00 00
M2	Holder Assy.	1set	0407 0717 00 99
M3	Tube (φ 3 x 16)	1	9380 5007 00 00
M5	Tube (φ 1.5 x 10)	4	9380 5008 00 00

The part "※" can not be supplied individually. So please order it as a unit of assembly shown by arrow mark (↑).



YOKOTA EUROPA BV

P.O. BOX 992 NL-1000 AA AMSTERDAM PHONE 020-625 28 53 FAX 020-625 35 69
Hydraulic Impulse Wrenches, Impact Wrenches, Drills, Grinders, Screw Drivers, Chippers, Saws, Pumps.

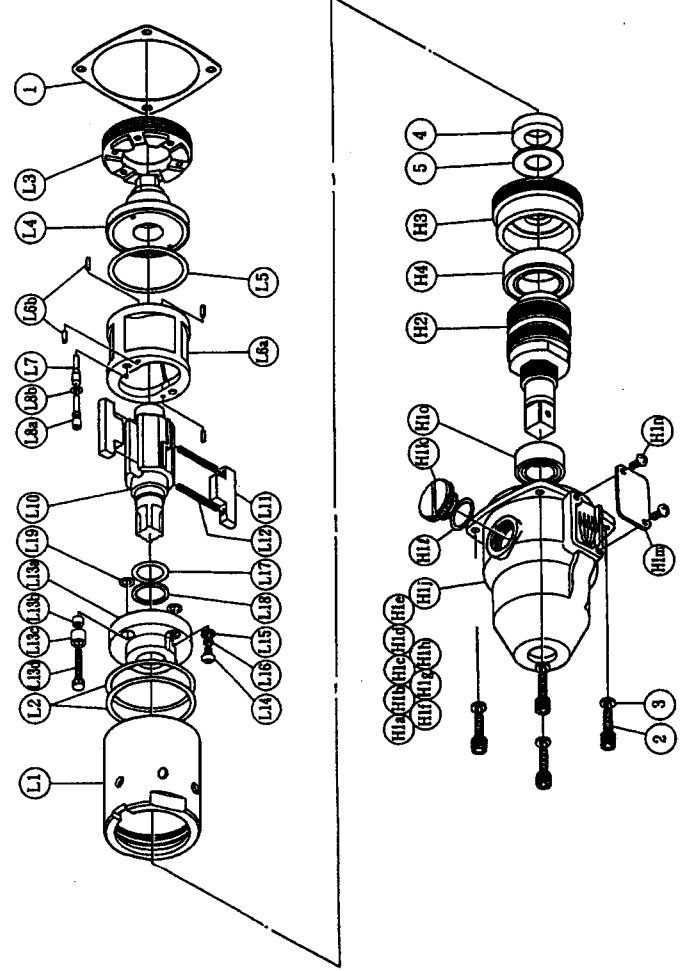


With built-in torque sensor

2 BLADE · SYSTEM WRENCH

MODEL (YES. NO.)	TOOL NO.
YEX - 1400 (03)	0323 0000 03 00

Exploded View of Liner Case and Hammer Case



Parts for Liner Case

No.	Name of Parts	Per Set	Parts No.
L	Liner Case Assy.	1set	0323 0422 04 99
L1	Liner Case	1	0323 0422 01 00
L2	O Ring (N50)	2	9010 4042 00 00
L3	Liner Cap	1	0322 0423 00 00
L4	Liner Upper Plate (N44)	1	0322 0424 00 00
L5	O Ring	1	9010 4020 00 00
L6	Liner Assy.	1set	0322 0425 02 99
	(a) Liner	1	※
	(b) Pin AA (3 × 7)	4	8051 3093 00 00
L7	Relief Valve	1	0322 0245 00 00
L8	Spring Guide B Assy.	1set	0322 0510 00 99
	(a) Spring Guide B	1	※
	(b) O Ring (N3)	1	9010 4025 00 00
L10	Liner Shaft	1	0323 0796 03 00
L11	Blade	2	0322 0719 01 00
L12	Spring (2.6 × 38)	2	8020 1315 00 00
	(4 × 35.5)	2	8020 1316 00 00
L13	Liner Lower Plate A Assy.	1set	0323 0426 04 98
	(a) Liner Lower Plate	1	※
	(b) Nylon Bushing (M4)	1	0261 0431 00 00
	(c) Bushing	1	0261 0728 00 00
	(d) Adjust Bolt	1	0238 0522 01 00
L14	Oil Plug (8.5 × 8.5 × 1.1)	1	8048 0010 00 00
L15	Washer	1	8040 1073 00 00
L16	O Ring (N4)	1	9010 4021 00 00
L17	O Ring (2.55 × 17.8 × 22.9)	1	9010 6017 00 00
L18	Backup Ring (18 × 22.4 × 0.8)	1	9090 1006 00 00
L19	O Ring (N6)	2	9010 4033 00 00
1	S-Packing B	1	0323 0003 00 02

The part "※" can not be supplied individually.
So please order it as a unit of assembly
shown by arrow mark (↑).

Parts for Hammer Case

No.	Name of Parts	Per Set	Parts No.
H	Hammer Case Assy.	1set	0323 0401 00 99
H1	Hammer Case A Assy.	1set	0323 0401 00 98
	(a) Hammer Case	1	※
	(b) Core A Assy.	1set	※
	(c) Core B	1	※
	(d) Spacer A	1	※
	(e) Core C	1	※
	(f) Core D Assy.	1set	※
	(g) Screw (M4 × 5)	1	※
	(h) Tube (φ 1.5 × 9)	4	※
	(i) Micro Connector (OX - 202)	4	※
	(k) Regulator Cap	1	0323 0204 00 00
	(l) O Ring (N16)	1	9010 4009 00 00
	(m) Cover Plate	1	0323 0014 00 00
	(n) Screw (M4 × 8)	2	9410 2004 00 00
	(o) Ball Bearing (6903ZZ)	1	9100 5025 00 00
H2	Main Shaft Assy. (φ 16)	1set	0326 0614 00 99
H3	Bearing Case	1	0321 0650 00 00
H4	Ball Bearing (6905ZZ)	1	9100 5013 00 00
2	Hex.Socket Bolt (M5 × 18)	4	8070 3052 00 00
3	Spring Washer (M5)	4	9200 3005 00 00
4	Washer (16.3 × 30 × 5.3)	1	8040 6028 00 00
5	Washer (16.3 × 30 × 0.5)	1	8041 5019 00 00
	Standard Accessories		
	Touch Joint (1/4 - 07)	1	9690 0007 00 00
	TF Pin (φ 2 × 90)	1	8051 6001 00 00
	Protector	1	0323 0029 00 00

The part "※" can not be supplied individually.
So please order it as a unit of assembly
shown by arrow mark (↑).



YOKOTA EUROPA BV

P.O. BOX 3692 NL - 1000 AJ AMSTERDAM PHONE 020 - 625 20 53 FAX 020 - 625 35 89
Hydraulic Linchpins, Wrenches, Torque Wrenches, Drills, Cutters, Screw Drivers, Chisels, Pumps