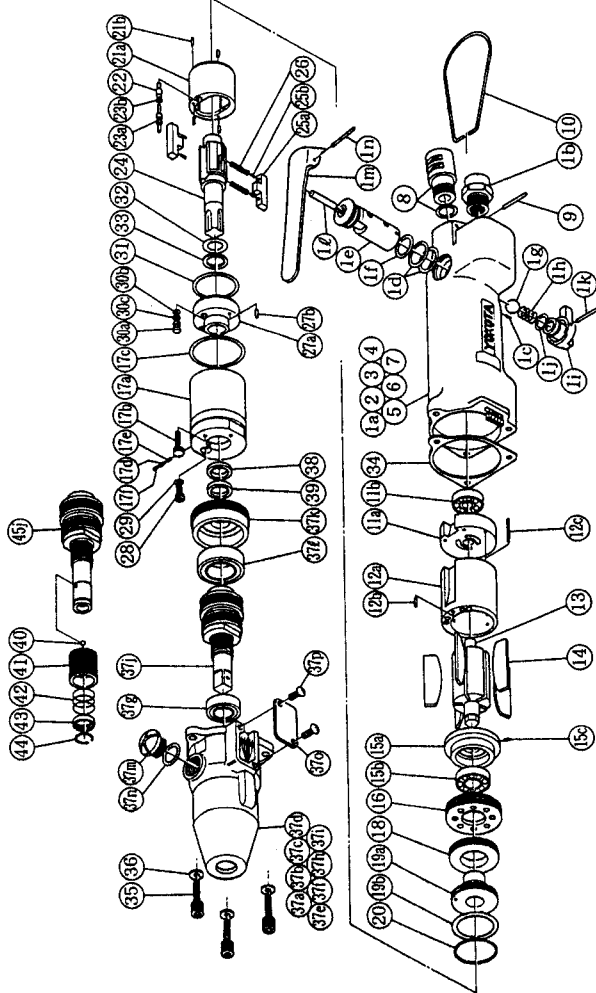


YOKOTA

With built-in torque sensor
2 BLADE • SYSTEM WRENCHES

MODELS (YES. NO.)	TOOL NO.
YEX-150S (01)	0099 0000 01 00
YEX-150SA (01)	0099 0000 01 01

EXPLODED VIEW



No.	Name of Parts	Per Set	Parts No.
1	Motor Case Assy.	1set	0099 0011 00 99
	(a) Motor Case	1	0099 0011 00 00
	(b) Hose Joint	1	0237 0113 00 00
	(c) Spring Roll Pin (2x5)	1	9250 1010 00 00
	(d) "O" Ring (N15)	2	9010 4008 00 00
	Reverse Valve Assy.	1set	0080 0005 00 99
	(e) Reverse Valve	1	* †
	(f) "O" Ring (N12.5)	1	9010 4006 00 00
	(g) Ball (5/16)	1	9150 4002 00 00
	Reverse Lever Assy.	1set	0084 0007 00 99
	(h) Spring (8x16)	1	8020 1066 00 00
	(i) Reverse Lever	1	* †
	(j) "O" Ring (P8)	1	9010 1006 00 00
	(k) Spring Roll Pin (2x20)	1	9250 1021 00 00
	(l) Pin (4x25)	1	8051 1150 00 00
	(m) Throttle Lever	1	0931 0110 00 00
	(n) Spring Roll Pin (3x24)	1	9250 1108 00 00
2	Connector	1	*



YOKOTA EUROPA BV

DE RUYTERKADE 142, AMSTERDAM PHONE (020) 25 29 53 TELEXNR: 14022

PARTS LIST

No.	Name of Parts	Per Set	Parts No.
3	Cord	1	*
4	Micro Connector	5	*
5	Buzzer Board Assy.	1set	0131 0798 00 98
6	"O" Ring (P20)	1	9010 1017 00 00
7	Snap Ring (RTW-24)	1	9040 1014 00 00
8	Silencer Assy.	1set	2306 0053 00 99
9	Spring Roll Pin (3x16)	1	9250 1050 00 00
10	Hanger	1	0004 0017 00 00
11	Upper Plate Assy.	1set	0081 0303 00 99
	(a) Upper Plate	1	0081 0303 00 00
	(b) Ball Bearing (# 687)	1	9100 1060 00 00
12	Cylinder Assy.	1set	0088 0304 01 99
	(a) Cylinder	1	* †
	(b) Spring Roll Pin (2.5x6)	1	9250 1030 00 00
	(c) Spring Roll Pin (2x12)	1	9250 1015 00 00
13	Rotor	1	0088 0305 00 00
14	Vane	5	0088 0306 00 00
15	Lower Plate Assy.	1set	0099 0307 00 99
	(a) Lower Plate	1	0099 0307 00 00
	(b) Ball Bearing (# 6900)	1	9100 1046 00 00
	(c) Pin (2.5x6)	1	8055 1053 00 00
16	Lower Plate Spacer	1	0099 0311 00 00
17	Liner Case (A) Assy.	1set	0093 0422 01 98
	(a) Liner Case	1	* †
	(b) Adjust Bolt (M3x8)	1	0093 0522 00 00
	(c) "O" Ring (N30)	1	9010 4019 00 00
	(d) Spring (2.4x6)	1	8020 1267 00 00
	(e) Rubber Plate	2	0081 0047 00 00
	(f) Screw (M3x3)	1	9480 2028 00 00
18	Liner Cap	1	0081 0423 01 00
19	Liner Upper Plate Assy.	1set	0081 0424 01 99
	(a) Liner Upper Plate	1	* †
	(b) "O" Ring (N25)	1	9010 4027 00 00
20	"O" Ring (1.5x28.5x28.5)	1	9010 6023 00 00
21	Liner Assy.	1set	0088 0425 02 99
	(a) Liner	1	* †
	(b) Pin (2x3.5)	4	8052 1027 00 00
22	Relief Valve	1	0088 0245 00 00
23	Spring Guide(B) Assy.	1set	0088 0510 00 99
	(a) Spring Guide(B)	1	* †
	(b) "O" Ring (0.7x2x3.4)	1	9010 6020 00 00
24	Liner Shaft	1	0079 0796 02 00
25	Blade Assy.	2set	0088 0719 01 99
	(a) Blade	1	* †
	(b) G Pin (2x4)	2	8410 6072 00 00
26	Spring (3.3x20.5)	2	8020 1244 00 00
27	Liner Lower Plate Assy.	1set	0081 0426 01 99
	(a) Liner Lower Plate	1	* †
	(b) Spring Roll Pin (3x8)	1	9250 2022 00 00
28	Oil Plug	1	0081 0010 00 00
29	"O" Ring (N3)	1	9010 4025 00 00

No.	Name of Parts	Per Set	Parts No.
30	Oil Stop Cap Assy.	1set	0081 0602 00 99
	(a) Oil Stop Cap	1	* †
	(b) "O" Ring (N2)	1	9010 4001 00 00
	(c) Backup Ring	1	9090 2001 00 00
31	"O" Ring (1x25.2x27.2)	1	9010 6012 00 00
32	"O" Ring (2.3x11.8x16.4)	1	9010 6019 00 00
33	Backup Ring (12x16x0.8)	1	9090 1010 00 00
34	S-Packing	1	0093 0003 00 00
35	Hex-Socket Bolt (M4x14)	3	8070 3008 00 00
36	Spring Washer (M4)	3	9200 3004 00 00
37	Hammer Case Assy.	1set	0093 0401 00 99
	(a) Hammer Case	1	* †
	(b) Core (A)	1	* †
	(c) Core (B)	1	* †
	(d) Spacer (A)	1	* †
	(e) Core (C)	1	* †
	(f) Core (D)	1	* †
	(g) Ball Bearing (# 6801ZZ)	1	* †
	(h) Screw (M4x5)	1	* †
	(i) Micro Connector	5	* †
	(j) Main Shaft Assy.	1set	* †
	(k) Bearing Case	1	* †
	(l) Ball Bearing (# 6803ZZ)	1	* †
	(m) Regulator Cap	1	0093 0204 00 00
	(n) "O" Ring (N12)	1	9010 4005 00 00
	(o) Cover Plate	1	0093 0014 00 00
	(p) Screw (M4x8)	2	9410 2004 00 00
38	Washer (12.5x16x3)	1	8040 5008 00 00
39	Washer (12.5x16x3.3)	1	8041 5012 00 00
	YEX-150A		
40	Ball (1/8)	1	9150 3009 00 00
41	Bit Chuck	1	2057 0414 00 00
42	Spring (13.5x11.2)	1	8020 1137 00 00
43	Spring Washer	1	2057 0419 00 00
44	Retaining Ring (10x1)	1	8030 1009 00 00
45	Hammer Case Assy.	1set	0093 0401 01 99
	(i) Main Shaft Assy.	1set	* †
	Standard Accessories		
	Touch Joint (1/4)	1	9090 0007 00 00
	Pin (φ2.0x90)	1	8051 6001 00 00

The part marked "*" can not be supplied individually. So please order it as a unit of assembly shown by arrow mark (†).
 The part marked "†" can not be supplied individually. So please order it as a unit of motor case assembly.