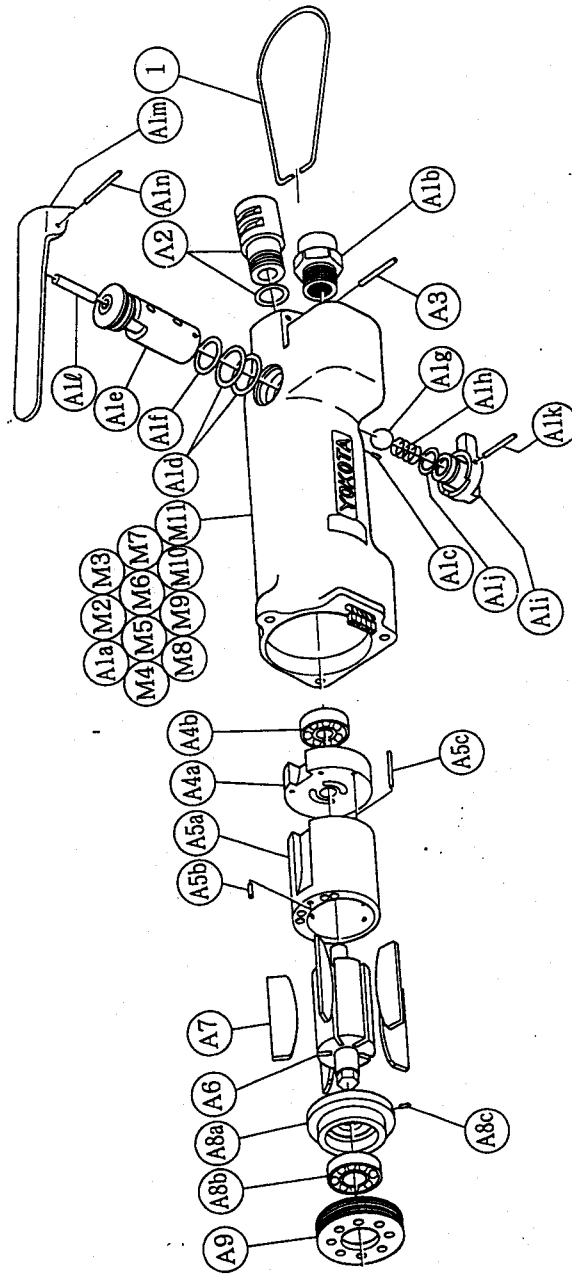


With built-in torque sensor
2 BLADE • SYSTEM WRENCHES

MODELS (YES. NO.)	TOOL NO.
YEX-150S (01)	0099 0000 01 00
YEX-150SA (01)	0099 0000 01 01

■ Exploded View of Motor Case



■ Parts for Motor Case

No.	Name of Parts	Per Set	Parts No.
M	Motor Case Assy.	1	0099 0011 00 99
M1	Motor Case (A) Assy.	1	0099 0011 00 98
A1	Motor Case (B) Assy.	1	0099 0011 00 97
	(a) Motor Case	1	0099 0011 00 00
	(b) Hose Joint	1	0237 0113 00 00
	(c) Spring Roll Pin	1	9250 1010 00 00
	(d) "O" Ring	2	9010 4008 00 00
	Reverse Valve Assy.	1	0080 0005 00 99
	(e) Reverse Valve	1	*
	(f) "O" Ring	1	↑
	(g) Ball	1	9010 4006 00 00
	(h) Spring	1	9150 4002 00 00
	(i) Spring	1	8020 1066 00 00
	Reverse Lever Assy.	1	0084 0007 00 99
	(j) Reverse Lever	1	*
	(k) "O" Ring	1	↑
	(l) Spring Roll Pin	1	9010 1006 00 00
	(m) Spring Roll Pin	1	9250 1021 00 00
	(n) AA Pin	1	8051 3057 00 00
	(o) Throttle Lever	1	0931 0110 00 00
	(p) Spring Roll Pin	1	9250 2007 00 00
A2	Silencer Assy.	1	0081 0053 00 99
A3	Spring Roll Pin	1	9250 1050 00 00
A4	Upper Plate Assy.	1	0081 0303 01 99
	(a) Upper Plate	1	0081 0303 01 00
	(b) Ball Bearing	1	9100 1060 00 00
A5	Cylinder Assy.	1	0088 0304 01 99
	(a) Cylinder	1	*
	(b) Spring Roll Pin	1	9250 1030 00 00
	(c) Spring Roll Pin	1	9250 1015 00 00
A6	Rotor	1	0088 0305 00 00
A7	Vane	5	0088 0306 00 00
A8	Lower Plate Assy.	1	0099 0307 01 99
	(a) Lower Plate	1	0099 0307 01 00
	(b) Ball Bearing	1	9100 1046 00 00
	(c) FF Pin	1	8055 1053 00 00
A9	Lower Plate Spacer	1	0099 0311 00 00
M2	Connector Assy.	1	8450 1001 00 99
M3	Tube	1	9380 5006 00 00
M4	Tube	1	9380 5007 00 00
M5	Not Used		
M6	Tube	5	9380 5008 00 00
M7	Micro Connector	1	8500 2001 00 00
M8	Buzzer	1	8440 1001 00 00
M9	Print Base (A)	1	0131 0798 00 01
M10	"O" Ring	1	9010 1017 00 00
M11	Snap Ring	1	9040 1014 00 00
I	Hanger	1	0004 0017 00 00

The part "*" can not be supplied individually. So please order it as a unit of assembly shown by arrow mark (↑).

Parts for Liner Case

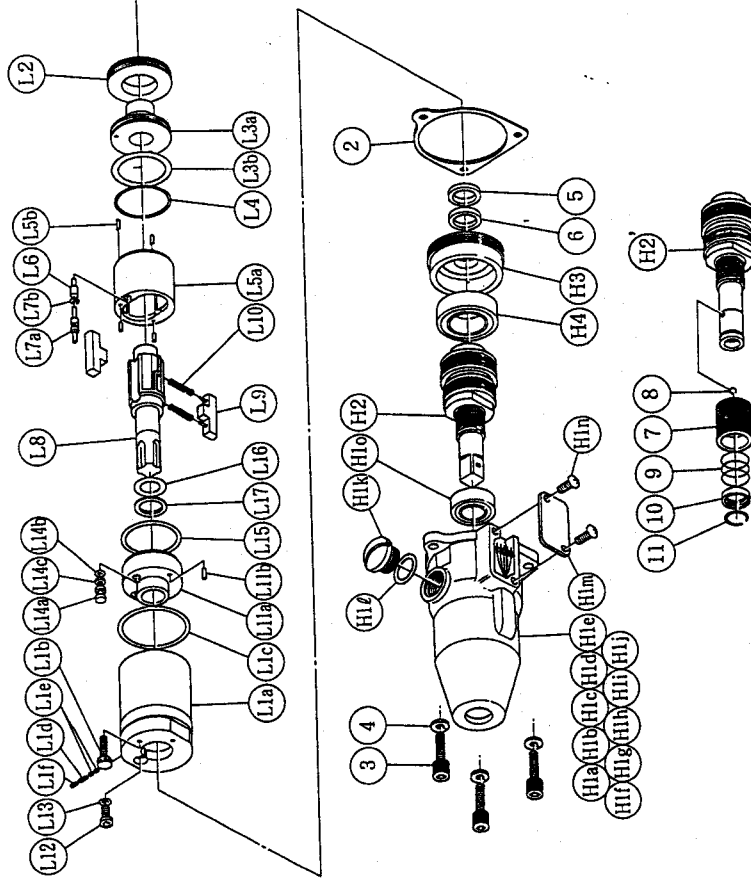
No.	Name of Parts	Per Set	Parts No.
L	Liner Case Assy.	1set	0093 0422 02 99
L1	Liner Case (A) Assy.	1set	0093 0422 01 98
	(a) Liner Case	1	*
	(b) Adjust Bolt	1	0093 0522 00 00
	(c) O'Ring	1	9010 4019 00 00
	(d) Spring	1	8020 1267 00 00
	(e) Rubber Plate	2	0081 0047 00 00
	(f) Screw	1	9480 2028 00 00
L2	Liner Cap	1	0081 0423 01 99
L3	Liner Upper Plate Assy.	1	*
	(a) Liner Upper Plate	1	*
	(b) O'Ring	1	9010 4027 00 00
L4	O'Ring	1	9010 6023 00 00
L5	Liner Assy.	1set	0088 0425 02 99
	(a) Liner	1	*
	(b) AA Pin	4	8051 3091 00 00
L6	Relief Valve	1	0088 0245 00 00
L7	Spring Guide (B) Assy.	1set	0088 0510 00 99
	(a) Spring Guide (B)	1	*
	(b) O'Ring	1	9010 6020 00 00
L8	Liner Shaft	1	0079 0796 02 00
L9	Blade	2	0088 0719 02 00
L10	Spring	2	8020 1296 00 00
L11	Liner Lower Plate Assy.	1set	0081 0426 01 99
	(a) Liner Lower Plate	1	*
	(b) Spring Roll Pin	1	9250 2022 00 00
L12	Oil Plug	1	0081 0010 00 00
L13	O'Ring	1	9010 4025 00 00
L14	Oil Stop Cap Assy.	1set	0081 0602 00 99
	(a) Oil Stop Cap	1	*
	(b) O'Ring	1	9010 4001 00 00
L15	Backup Ring	1	9090 2001 00 00
L16	O'Ring	1	9010 6012 00 00
L17	Backup Ring	1	9090 6019 00 00
2	S-Peeking (B)	1	0093 0003 00 00

yokota
FA SYSTEM & AIR TOOLS

With built-in torque sensor
2 BLADE SYSTEM WRENCHES

MODELS (YES. NO.)	TOOL NO.
YEX-150S (01)	0099 0000 01 00
YEX-150SA (01)	0099 0000 01 01

Exploded View of Liner Case and Hammer Case



Parts for Hammer Case

No.	Name of Parts	Per Set	Parts No.
H	Hammer Case Assy.	1set	0093 0401 00 99
H1	Hammer Case (A) Assy.	1set	0093 0401 00 98
	(a) Hammer Case	1	*
	(b) Core (A) Assy.	1set	*
	(c) Core (B)	1	*
	(d) Spacer (A)	1	*
	(e) Core (C)	1	*
	(f) Core (D) Assy.	1	*
	(g) Screw	1	*
	(h) Micro Connector	4	*
	(i) Tube	4	*
	(j) Not Used		
	(k) Regulator Cap	1	0093 0204 00 00
	(l) O'Ring	1	9010 4004 00 00
	(m) Cover Plate	1	0093 0014 00 00
	(n) Screw	2	9410 2004 00 00
	(o) Ball Bearing	1	9100 5028 00 00
H2	Main Shaft Assy.	1set	0093 0614 00 99
H3	Bearing Case	1	0093 0650 00 00
H4	Ball Bearing	1	9100 5025 00 00
3	Hex Socket Bolt	3	8070 3008 00 00
4	Spring Washer	3	9200 3004 00 00
5	Washer	1	8040 6025 00 00
6	Washer	1	8041 5011 00 00
	YEX - I505A		
H'	Hammer Case Assy.(A type)	1set	0093 0401 00 89
H2'	Main Shaft Assy.(A type)	1set	0093 0614 00 89
7	Bit Chuck	1	2057 0414 00 00
8	Ball	1	9150 3009 00 00
9	Spring	1	8020 1137 00 00
10	Spring Washer	1	2057 0419 00 00
11	Retaining Ring	1	8030 1009 00 00
	Standard Accessories		
	Touch Joint	1	9690 0007 00 00
	TF Pin	1	8051 6001 00 00

The part "*" can not be supplied individually.
So please order it as a unit of assembly
shown by arrow mark (↑).

YOKOTA EUROPA BV
P.O. BOX 392 NL - 1000 AJ AMSTERDAM PHONE 020 - 625 29 53 FAX 020 - 625 35 69
Hydraulic Impulse Wrenches, Impact Wrenches, Drills, Grinders, Screwdrivers, Chippers, Sealers, Pumps.