

With built-in torque sensor 2 BLADE - SYSTEM WRENCH

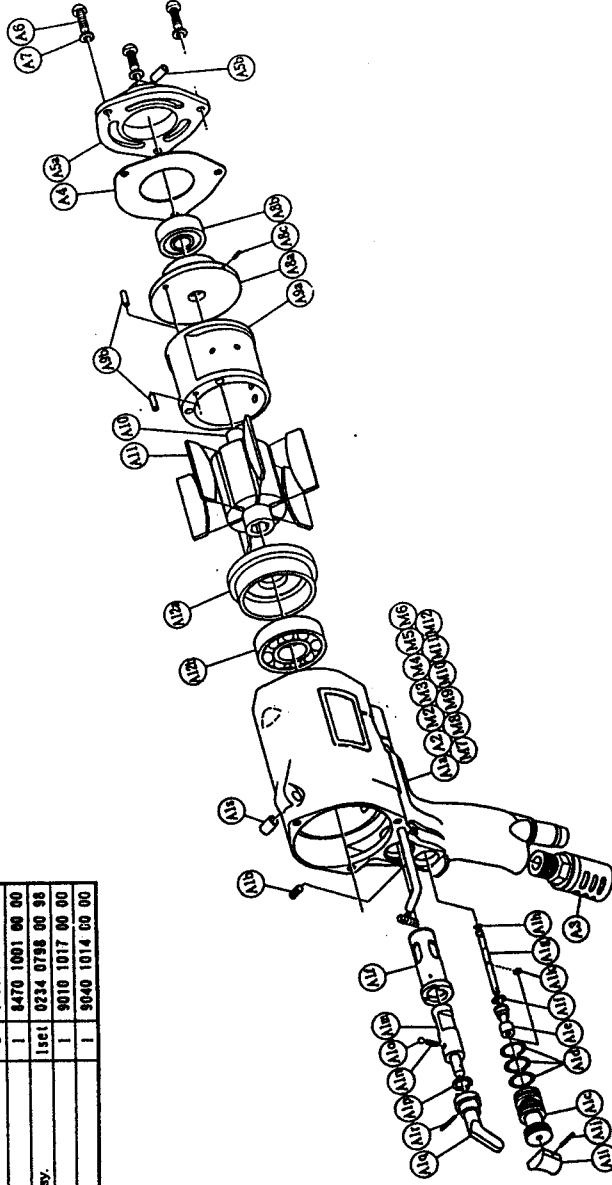
MODEL (YES. NO.)	TOOL NO.
YEX-1900 (03)	0321 0000 03 00

■ Exploded View of Motor Case

Parts for Motor Case

No.	Name of Parts	Per Set	Parts No.	No.	Name of Parts	Per Set	Parts No.
M	Motor Case Assy.	1set	0321 0011 01 99	M2	Holder Assy.	1set	0127 0717 00 99
M1	Motor Case (A) Assy.	1set	0321 0011 00 98	M3	Tube	1	9380 5007 00 00
A1	Motor Case (B) Assy.	1set	0321 0011 00 97	M4	Not Used	1	9380 8001 00 00
	(a) Motor Case	1	0321 0011 00 00	M5	Pipe	1	0321 0813 00 00
	(b) Screw	1	9480 1010 00 00	M6	Socket Housing	5	8470 2001 00 00
	Throttle Bushing Assy.	1set	0229 0104 00 99	M7	Tube	1	9380 5005 00 00
	(c) Throttle Bushing	1	※	M8	Socket Contact	2	8480 1001 00 00
	(d) "O" Ring	3	9010 4008 00 00	M9	Socket Housing	1	8470 1001 00 00
	Throttle Rod Bushing Assy.	1set	0323 0105 00 99	M10	Buzzer Base Assy.	1set	0234 0788 00 98
	(e) Throttle Rod Bushing	1	※	M11	"O" Ring	1	9010 1017 00 00
	(f) "O" Ring	1	9010 3022 00 00	M12	Snap Ring	1	9040 1014 00 00
	Throttle Rod Assy.	1set	0229 0106 00 99				
	(g) Throttle Rod	1	※				
	(h) "O" Ring	1	9010 4001 00 00				
	(i) Throttle Knob	1	2024 0153 00 00				
	(j) Spring Roll Pin	1	9250 1005 00 00				
	(k) Snap Ring	1	9040 5008 00 00				
	(l) Reverse Bushing	1	9229 0084 00 00				
	(m) Reverse Valve	1	0320 0085 00 00				
	(n) Spring	1	8020 1022 00 00				
	(o) Ball (M4)	1	9150 1005 00 00				
	(p) Snap Ring	1	9040 3004 00 00				
	(q) Reverse Lever	1	0048 0007 01 00				
	(r) Spring Roll Pin	1	9250 1049 00 00				
	(s) Spring Roll Pin	1	9250 2017 00 00				
A2	Hose Joint	1	0078 0113 00 00				
A3	Stilencer Assy.	1set	0405 0053 01 99				
A4	S - Packing (A)	1	0229 0003 00 01				
A5	Motor Case Cover Assy.	1set	0229 0001 00 99				
	(a) Motor Case Cover	1	※				
	(b) Spring Roll Pin	1	9250 1082 00 00				
A6	Hex Settel Ball	3	8070 3032 00 00				
A7	Spring Washer	3	9200 2006 00 00				
A8	Upper Plate Assy.	1set	0313 0303 01 99				
	(a) Upper Plate	1	0313 0303 01 00				
	(b) Ball Bearing	1	9100 1021 00 00				
A9	Cylinder Assy.	1set	0229 0304 01 99				
	(a) Cylinder	1	※				
	(b) Spring Roll Pin	2	9250 1066 00 00				
A10	Rozor	1	0229 0305 00 00				
A11	Vane	6	0229 0306 00 00				
A12	Lower Plate Assy.	1set	0229 0307 01 99				
	(a) Lower Plate	1	0229 0307 01 00				
	(b) Ball Bearing	1	9100 1024 00 00				

The part "※" can not be supplied individually. So please order it as a unit of assembly shown by arrow mark (↑).

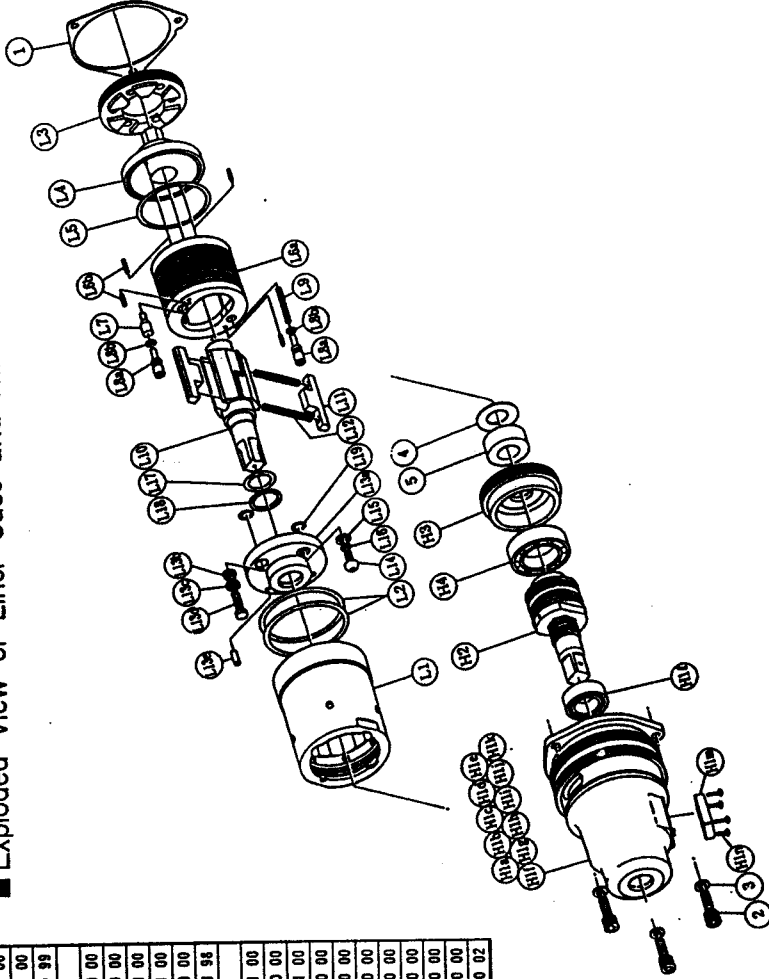


yokota
P. SYSTEM & AIR TOOLS

With built-in torque sensor
2 BLADE SYSTEM WRENCH

MODEL (YES. NO.)	TOOL NO.
YEX-1900 (03)	0321 0000 03 00

■ Exploded View of Liner Case and Hammer Case



■ Parts for Liner Case

No.	Name of Parts	Per Set	Parts No.
L	Liner Case Assy.	1set	0321 0422 03 99
L1	Liner Case	1	0406 0422 00 00
L2	"O" Ring	2	9010 4035 00 00
L3	Liner Cap	1	0229 0423 00 00
L4	Liner Upper Plate	1	0320 0424 00 00
L5	"O" Ring	1	9010 4035 00 00
L6	Liner Assy.	1set	0320 0425 02 99
	(a) Liner	1	* ↑
	(b) AA Pin	4	8051 3096 00 00
L7	Retain Valve	1	0320 0245 00 00
L8	Spring Guide (B) Assy.	2set	0320 0610 00 99
	(a) Spring Guide (B)	1	* ↑
	(b) "O" Ring	1	9010 1061 00 00
L9	Spring	1	8020 1215 00 00
L10	Liner Shaft	1	0321 0786 03 00
L11	Blade	2	0320 0719 01 00
L12	Spring	2	8020 1215 00 00
L13	Liner Lower Plate (A) Assy.	1set	0321 0426 03 98
	(a) Liner Lower Plate	1	* ↑
	(b) Nylon Bushing	1	8406 0431 01 00
	(c) Washer	1	8040 1138 00 00
	(d) Adjust Bolt	1	0321 0522 01 00
	(e) Spring Roll Pin	1	9250 2024 00 00
L14	Hex Socket Button Bolt	1	8071 1011 00 00
L15	Washer	1	8040 1127 00 00
L16	"O" Ring	1	9010 4033 00 00
L17	"O" Ring	1	9010 4017 00 00
L18	Beaus Ring	1	9080 1006 00 00
L19	"O" Ring	2	9010 4002 00 00
1	S-nutting (B)	1	0234 0003 00 02

■ Parts for Hammer Case

No.	Name of Parts	Per Set	Parts No.
H	Hammer Case Assy.	1set	0321 0401 01 99
H1	Hammer Case (A) Assy.	1set	0321 0401 00 98
	(a) Hammer Case	1	* ↑
	(b) Core (A) Assy.	1	* ↑
	(c) Core (B)	1	* ↑
	(d) Spacer (A)	1	* ↑
	(e) Core (C)	1	* ↑
	(f) Core (D) Assy.	1set	* ↑
	(g) Screw	1	* ↑
	(h) Print Base (B) Assy.	1set	* ↑
	(i) "O" Ring	1	* ↑
	Slide Cover Assy.	1set	* ↑
	(j) Slide Cover	1	* ↑
	(k) "O" Ring	1	* ↑
	(l) Ball Bearing	1	9100 5025 00 00
	(m) Cover Plate	1	0127 0014 00 00
	(n) Screw	4	9460 2005 00 00
H2	Main Shaft Assy.	1set	0321 0614 01 98
H3	Bearing Case	1	0321 0650 00 00
H4	Ball Bearing	1	9100 5013 00 00
2	Hex Socket Bolt	3	8070 3033 00 00
3	Spring Washer	3	9200 3006 00 00
4	Washer	1	8040 6029 00 00
5	Washer	1	8041 5019 00 00
	Standard Accessories		
	Touch Joint	1	9690 0007 00 00
	TF Pin	1	8051 6001 00 00
	Protector	1	0321 0029 00 00

The part "*" can not be supplied individually.
So please order it as a unit of assembly
shown by arrow mark (↑).

YOKOTA EURO PABV
P.O. BOX 392 NL - 1000 AJ AMSTERDAM. PHONE 020 - 625 29 53 FAX 020 - 625 35 69

Hydraulic Impact Wrenches, Impact Wrenches, Drills, Grinders, Screwdrivers, Chippers, Scales, Pumps