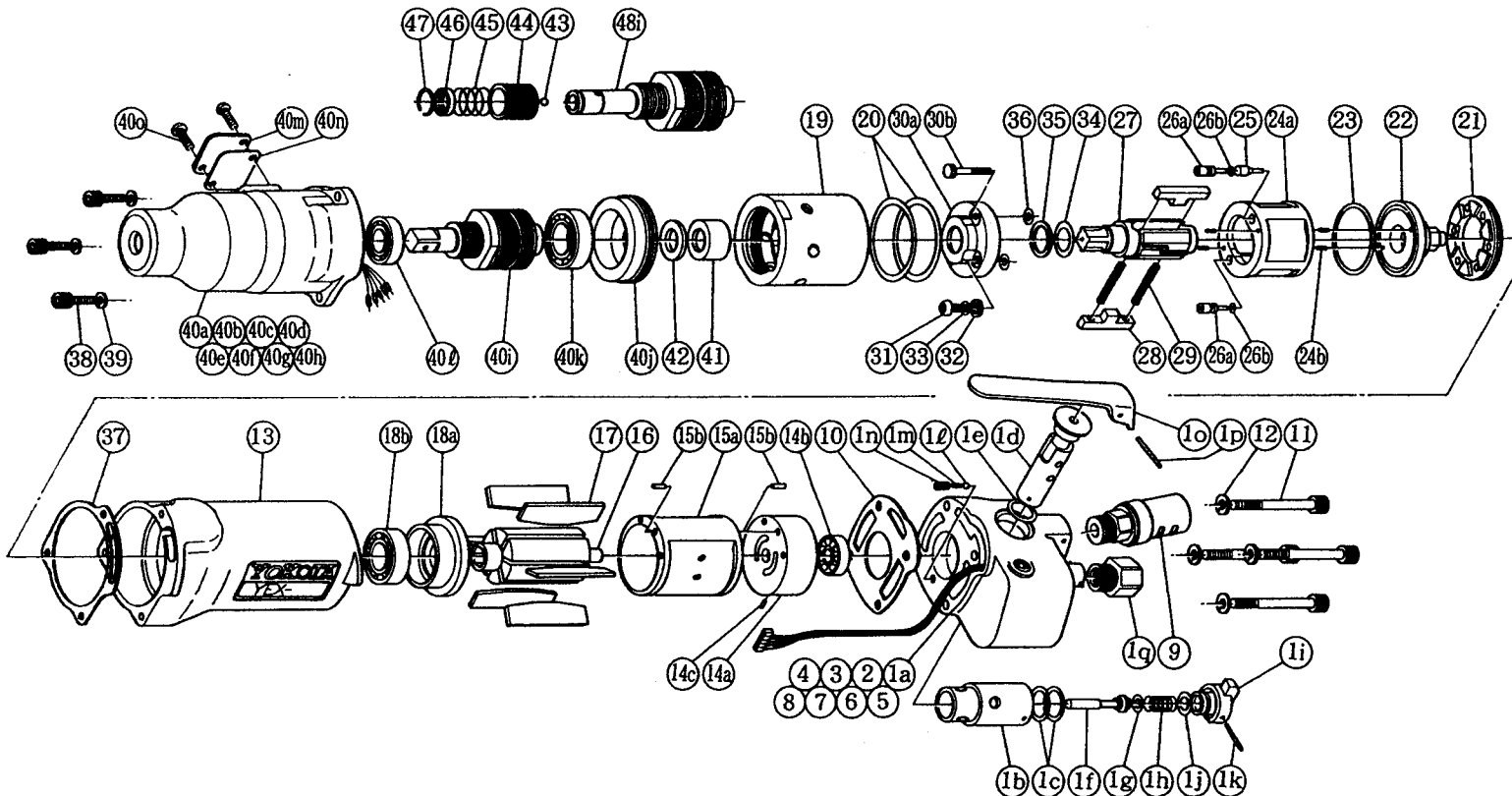


YOKOTA

With built-in torque sensor 2 BLADE • SYSTEM WRENCHES

| MODELS (YES. NO.) | TOOL NO. |
|-------------------|-----------------|
| YEX-500S (0.1) | 0082 0000 01 00 |
| YEX-500SA (0.1) | 0082 0000 01 01 |

EXPLODED VIEW



| No. | Name of Parts | Per Set | Parts No. |
|-----|---------------------|---------|-----------------|
| 1 | Handle Assy. | 1set | 0131 0002 00 99 |
| | Handle (A) Assy. | 1set | 0131 0002 00 98 |
| | (a) Handle | 1 | * ↑ |
| | (b) Reverse Bushing | 1 | * ↑ |
| | (c) "O"Ring (N15) | 2 | 9010 4008 00 00 |
| | Reverse Valve Assy. | 1set | 0932 0005 00 99 |
| | (d) Reverse Valve | 1 | * ↑ |
| | (e) "O"Ring (N12) | 1 | 9010 4005 00 00 |
| | Throttle Rod Assy. | 1set | 0932 0106 00 99 |
| | (f) Throttle Rod | 1 | * ↑ |
| | (g) "O"Ring (No.3) | 1 | 9010 3003 00 00 |
| | (h) Spring (8 × 16) | 1 | 8020 1066 00 00 |

| No. | Name of Parts | Per Set | Parts No. |
|-----|------------------------------|---------|-----------------|
| | Reverse Lever Assy. | 1 | 0932 0007 00 99 |
| | (i) Reverse Lever | 1 | * ↑ |
| | (j) "O"Ring (P.8) | 1 | 9010 1006 00 00 |
| | (k) Spring Roll Pin (2 × 20) | 1 | 9250 1021 00 00 |
| | (l) Ball (M3) | 1 | 9150 1003 00 00 |
| | (m) Spring (3 × 10) | 1 | 8020 1004 00 00 |
| | (n) Screw (M4 × 6) | 1 | 9480 2003 00 00 |
| | (o) Throttle Lever | 1 | 0931 0110 00 00 |
| | (p) Spring Roll Pin (3 × 25) | 1 | 9250 5001 00 00 |
| | (q) Hose Joint | 1 | 0071 0113 00 00 |
| 2 | Connector | 1 | ★ |
| 3 | Cord | 1 | ★ |



YOKOTA EUROPA BV

DE RUYTERKADE 142, AMSTERDAM PHONE (020) 25 29 53 TELEXNR; 14022

PARTS LIST

| No. | Name of Parts | Per Set | Parts No. | No. | Name of Parts | Per Set | Parts No. |
|-----|--------------------------------|---------|-----------------|----------------------|--------------------------|---------|-----------------|
| 4 | Micro Connector | 5 | ★ | 40 | Hammer Case Assy. | 1set | 0082 0401 00 99 |
| 5 | Buzzer Base Assy. | 1set | ★ | (a) | Hammer Case | 1 | * ↑ |
| 6 | "O"Ring (P20) | 1 | 9010 1017 00 00 | (b) | Core (A) | 1 | * ↑ |
| 7 | Snap Ring (RTW - 24) | 1 | 9040 1014 00 00 | (c) | Core (B) | 1 | * ↑ |
| 8 | Socket Plug (PT 1/8) | 1 | 8210 2001 00 00 | (d) | Spacer (A) | 1 | * ↑ |
| 9 | Silencer Assy. | 1set | 0943 0053 01 99 | (e) | Core (C) | 1 | * ↑ |
| 10 | S - Packing (A) | 1 | 0131 0003 00 01 | (f) | Core (D) | 1 | * ↑ |
| 11 | Hex.Socket Bolt (M5 × 50 × 16) | 4 | 8070 3122 00 00 | (g) | Screw (M4 × 5) | 1 | * ↑ |
| 12 | Spring Washer (M5) | 4 | 9200 3005 00 00 | (h) | Micro Connector | 5 | * ↑ |
| 13 | Motor Case | 1 | 0131 0011 00 00 | (i) | Main Shaft Assy. | 1set | * ↑ |
| 14 | Upper Plate Assy. | 1set | 0082 0303 00 99 | (j) | Bearing Case | 1 | * ↑ |
| (a) | Upper Plate | 1 | 0082 0303 00 00 | (k) | Ball Bearing (# 6903ZZ) | 1 | * ↑ |
| (b) | Ball Bearing (# 607V) | 1 | 9100 2001 00 00 | (l) | Ball Bearing (# 6901ZZ) | 1 | * ↑ |
| (c) | Spring Roll Pin (2 × 6) | 1 | 9250 1011 00 00 | (m) | Cover Plate | 1 | 0131 0014 00 00 |
| 15 | Cylinder Assy. | 1 | 0051 0304 02 99 | (n) | S - Packing (C) | 1 | 0131 0003 00 03 |
| (a) | Cylinder | 1 | * ↑ | (o) | Screw (M4 × 8) | 2 | 9460 2002 00 00 |
| (b) | Spring Roll Pin (3 × 8) | 2 | 9250 1045 00 00 | 41 | Spacer | 1 | 0082 0119 00 00 |
| 16 | Rotor | 1 | 0051 0305 01 00 | 42 | Washer (12.5 × 20 × 2.3) | 1 | 8041 5006 00 00 |
| 17 | Vane | 6 | 0051 0306 00 00 | | | | |
| 18 | Lower Plate Assy. | 1set | 0051 0307 01 99 | | YEX - 500SA | 1set | 0082 0000 01 01 |
| (a) | Lower Plate | 1 | 0051 0307 01 00 | 43 | Ball (1/8) | 1 | 9150 3009 00 00 |
| (b) | Ball Bearing (# 6902) | 1 | 9100 1036 00 00 | 44 | Bit Chuck | 1 | 2057 0414 00 00 |
| 19 | Liner Case | 1 | 0077 0422 00 00 | 45 | Spring (13.5 × 11.2) | 1 | 8020 1137 00 00 |
| 20 | "O"Ring (N38) | 2 | 9010 4016 00 00 | 46 | Spring Washer | 1 | 2057 0419 00 00 |
| 21 | Liner Cap | 1 | 0048 0423 00 00 | 47 | Retaining Ring (10 × 1) | 1 | 8030 1009 00 00 |
| 22 | Liner Upper Plate | 1 | 0077 0424 00 00 | 48 | Hammer Case Assy. | 1set | 0082 0401 01 99 |
| 23 | "O"Ring (N32) | 1 | 9010 4014 00 00 | (i) | Main Shaft Assy. | 1set | * ↑ |
| 24 | Liner Assy. | 1set | 0077 0425 00 99 | Standard Accessories | | | |
| (a) | Liner | 1 | * ↑ | | Hanger | 1 | 0004 0017 00 00 |
| (b) | Pin (3 × 5) | 4 | 8052 1022 00 00 | | Touch Joint (1/4) | 1 | 9690 0007 00 00 |
| 25 | Relief Valve | 1 | 0077 0245 00 00 | | Pin (φ 2.0 × 90) | 1 | 8051 6001 00 00 |
| 26 | Spring Guide (B) Assy. | 2set | 0077 0510 00 99 | | | | |
| (a) | Spring Guide (B) | 1 | * ↑ | | | | |
| (b) | "O"Ring (N2) | 1 | 9010 4001 00 00 | | | | |
| 27 | Liner Shaft | 1 | 0082 0796 01 00 | | | | |
| 28 | Blade | 2 | 0077 0719 01 00 | | | | |
| 29 | Spring (3.6 × 27) | 2 | 8020 1249 00 00 | | | | |
| 30 | Liner Lower Plate (A) Assy. | 1set | 0082 0426 02 98 | | | | |
| (a) | Liner Lower Plate | 1 | * ↑ | | | | |
| (b) | Adjust Bolt | 1 | 0082 0522 01 00 | | | | |
| 31 | Oil Plug (M4) | 1 | 0048 0010 00 00 | | | | |
| 32 | Washer (6.5 × 8.5 × 1.1) | 1 | 8040 1073 00 00 | | | | |
| 33 | "O"Ring (N4) | 1 | 9010 4021 00 00 | | | | |
| 34 | "O"Ring (2.8 × 12.8 × 18.4) | 1 | 9010 6014 00 00 | | | | |
| 35 | Backup Ring | 1 | 9090 1005 00 00 | | | | |
| 36 | "O"Ring (N5) | 2 | 9010 4033 00 00 | | | | |
| 37 | S-Packing(B) | 1 | 0131 0003 00 02 | | | | |
| 38 | Hex.Socket Bolt (M4 × 14) | 3 | 8070 3008 00 00 | | | | |
| 39 | Spring Washer (M4) | 3 | 9200 3004 00 00 | | | | |

The part marked "*" can not be supplied individually. So please order it as a unit of assembly shown by arrow mark (↑).
 The part marked "★" can not be supplied individually. So please order it as a unit of Handle assembly.