

Parts for Motor Case

No.	Name of Parts	Per Set	Parts No.
M	Motor Case Assy.	1set	8269 8011 01 99
M1	Motor Case (A) Assy.	1set	0678 0611 00 98
A1	Motor Case (B) Assy.	1set	0678 0611 00 97
	(a) Motor Case	1	0088 0611 00 00
	(b) Screw (M5 X 8)	1	8480 1818 00 00
	Throttle Bushing Assy.	1set	2958 0104 00 99
	(c) Throttle Bushing	1	※ ↑
	(d) O Ring (N15)	3	9010 4008 00 00
	Throttle Rod Bushing Assy.	1set	0678 0105 00 99
	(e) Throttle Rod Bushing	1	※ ↑
	(f) O Ring (No.3)	1	9910 3921 00 00
	Throttle Rod Assy.	1set	2058 0106 00 99
	(g) Throttle Rod	1	※ ↑
	(h) O Ring (N2)	1	9010 4901 00 00
	Throttle Knob	1	2824 0152 00 00
	(i) Spring Roll Pin (1.5 X 14)	1	9250 1005 00 00
	(k) Snap Ring (ETW2.8)	1	9040 5008 00 00
	(l) Reverse Bushing	1	9048 0604 01 00
	(m) Reverse Valve	1	0648 0605 01 00
	(n) Spring (3 X 10)	1	8020 1004 00 00
	(o) Ball (1/8)	1	9150 3009 00 00
	(p) Snap Ring (IRTW-12)	1	9040 3002 00 00
	(q) Reverse Lever	1	0048 0007 01 00
	(r) Spring Roll Pin (3 X 14)	1	9250 1049 00 00
	(s) Spring Roll Pin (6 X 10)	1	9250 1082 00 00
A2	Hose Joint	1	0078 0113 00 00
A3	Shimner Assy.	1set	0405 0653 01 99
A4	S - Pecking (A)	1	0127 0003 00 01
A5	Motor Case Cover	1	0127 0001 00 00
A6	Hex. Socket Bolt (M5 X 14)	3	9070 3050 00 00
A7	Spring Washer (M5)	3	9260 2005 00 00
A8	Upper Plate Assy.	1set	0643 0303 00 99
	(a) Upper Plate	1	0943 0283 00 00
	(b) Ball Bearing (608)	1	9100 1004 00 00
	(c) Spring Roll Pin (2 X 5)	2	9250 0001 00 00
A9	Cylinder	1	0648 0364 00 00
A10	Rear	1	0071 0305 00 00
A11	Vane	6	0648 0306 00 00
A12	Lower Plate Assy.	1set	0643 0307 00 99
	(a) Lower Plate	1	0943 0307 00 00
	(b) Ball Bearing (6902)	1	9100 1036 00 00
	(c) Spring Roll Pin (2 X 5)	1	9250 0001 00 00
M2	Holder Assy.	1set	0276 0717 00 99
M3	Tube	1	9380 5007 00 00
M4	Not Used		
M5	Tube	4	9380 5008 00 00
M6	Micro Connector	1	8500 2001 00 00
M7	Socket Contact	2	8480 1001 00 00
M8	Socket Housing	1	8478 1001 00 00
M9	Buzzer Base Assy.	1set	0127 0708 00 99
M10	Cover	1	0078 0708 00 00
M11	Screw (M3 X 6)	2	8408 2014 00 00

The part "※" can not be supplied individually. So please order it as a unit of assembly shown by arrow mark (↑).

yokota

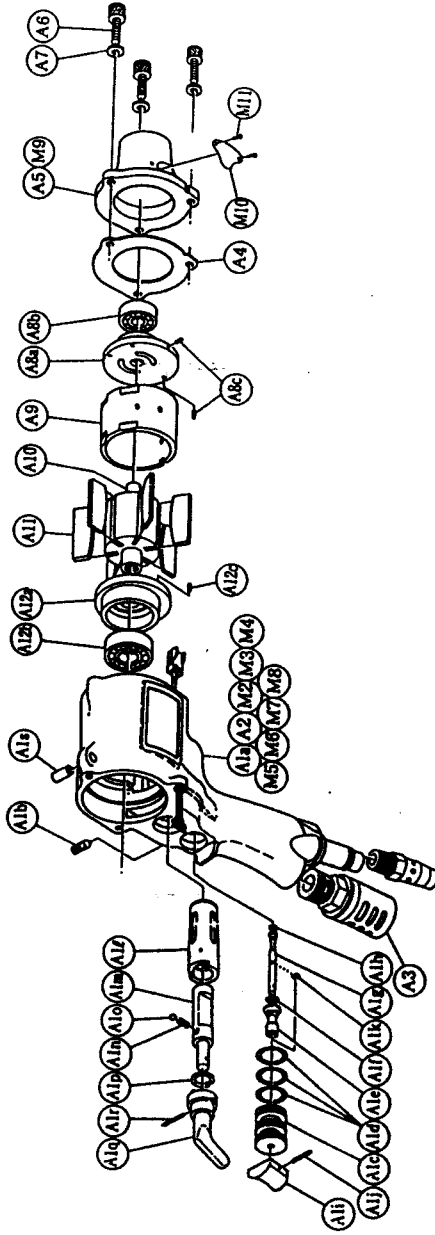
HYDRAULIC SYSTEMS & AIR TOOLS

With built-in torque sensor

2 BLADE - SYSTEM WRENCHES

MODELS (YES. No.)	TOOL No.
YEX-501 (01)	0260 0000 01 00
YEX-501A (01)	0260 0000 01 01

■ Exploded View of Motor Case



YOKOTA EUROPA BV

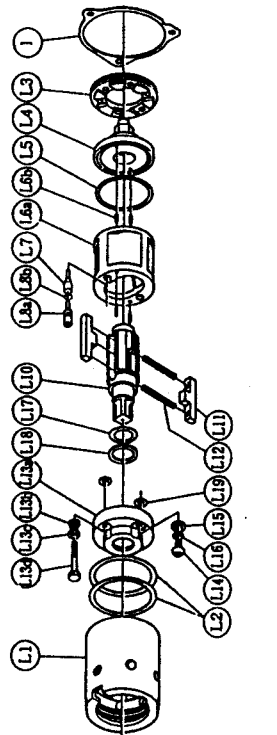
P.O. BOX 382 NL-1000 AJ AMSTERDAM PHONE 020-625 29 53 FAX 020-625 35 69
 Hydraulische Inpne Wrenches, Impact Wrenches, Screwdrivers, Chippers, Scales, Pumps.



With built-in torque sensor 2 BLADE SYSTEM WRENCHES

MODELS (YES, No.)	TOOL No.
YEX-501 (01)	0260 0000 01 00
YEX-501A (01)	0260 0000 01 01

Exploded View of Liner Case and Hammer Case



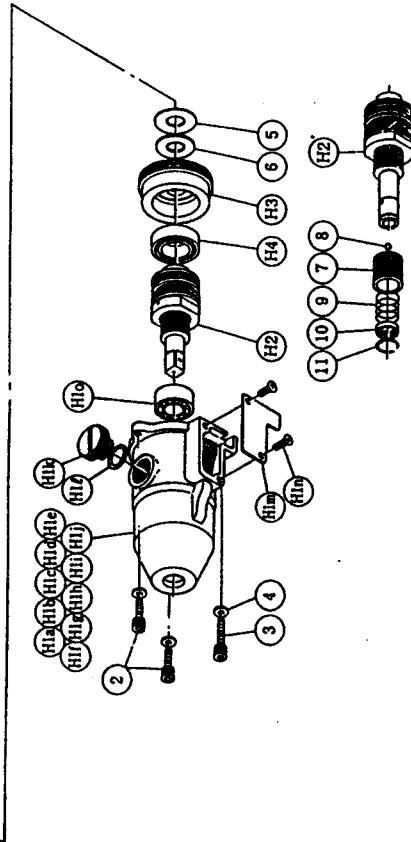
Parts for Liner Case

No.	Name of Parts	Per Set	Parts No.
L	Liner Case Assy.	1set	0078 0422 02 99
L1	Liner Case	1	0078 0422 00 00
L2	O Ring (N38)	2	9010 4016 00 00
L3	Liner Cap	1	0048 0423 00 00
L4	Liner Upper Plate (N32)	1	0077 0424 00 00
L5	O Ring	1	9010 4014 00 00
L6	Liner Assy.	1set	0077 0425 02 99
	(a) Liner	1	※ ↑
	(b) AA Pin (3 x 5)	4	8051 3094 00 00
L7	Relief Valve	1	0077 0245 00 00
L8	Spring Guide (B) Assy.	1set	0077 0510 00 99
	(a) Spring Guide (B)	1	※ ↑
	(b) O Ring (N2)	1	9010 4001 00 00
L9			
L10	Liner Shaft	1	0078 0796 01 00
L11	Blade	2	0077 0719 01 00
L12	Spring (3.6 x 26)	2	8020 1305 00 00
L13	Liner Lower Plate (A) Assy.	1set	0078 0426 03 98
	(a) Liner Lower Plate	1	※ ↑
	(b) Nylon Bushing	1	0078 0431 01 00
	(c) Washer (4.3 x 6.8 x 2.2)	1	8040 1136 00 00
(d) Adjust Bolt	1	0078 0522 01 00	
L14	Oil Plug	1	0048 0010 00 00
L15	Washer (6.5 x 8.5 x 1.1)	1	8040 1073 00 00
L16	O Ring (N4)	1	9010 4021 00 00
L17	O Ring (2.8 x 12.8 x 1.8.4)	1	9010 6014 00 00
L18	Backup Ring (13 x 18 x 0.6)	1	9090 1005 00 00
L19	O Ring (N5)	2	9010 4033 00 00
	S-Packing (B)	1	0127 0003 00 02

Parts for Hammer Case

No.	Name of Parts	Per Set	Parts No.
H	Hammer Case Assy.	1set	0260 0401 00 99
H1	Hammer Case (A) Assy.	1set	0260 0401 00 98
	(a) Hammer Case	1	※ ↑
	(b) Core (A) Assy.	1set	※ ↑
	(c) Core (B)	1	※ ↑
	(d) Spacer (A)	1	※ ↑
	(e) Core (C)	1	※ ↑
	(f) Core (D) Assy.	1	※ ↑
	(g) Screw	1	※ ↑
	(h) Tube	4	※ ↑
	(i) Not Used		
	(j) Micro Connector	4	※ ↑
	(k) Regulator Cap	1	0143 0204 00 00
	(l) O Ring (N12)	1	9010 4005 00 00
	(m) Cover Plate	1	0143 0014 00 00
	(n) Screw	2	9410 2004 00 00
	(o) Ball Bearing (6901ZZ)	1	9100 5026 00 00
H2	Main Shaft Assy.	1set	0127 0614 00 99
H3	Bearing Case	1	0127 0650 00 00
H4	Ball Bearing (6903ZZ)	1	9100 5025 00 00
2	Hex. Socket Bolt (M4 x 14)	2	8070 3008 00 00
3	Hex. Socket Bolt (M4 x 22)	1	8070 3011 00 00
4	Spring Washer (M4)	3	9200 3004 00 00
5	Washer (12.3 x 21 x 2.8)	1	8040 6027 00 00
6	Washer (12.5 x 21 x 0.5)	1	8041 5033 00 00
	YEX-501A		
H'	Hammer Case Assy.(A type)	1set	0260 0401 00 89
H2'	Main Shaft Assy.(A type)	1set	0078 0614 00 89
7	Bit Chuck	1	2057 0414 00 00
8	Ball (1/8)	1	9150 3009 00 00
9	Spring (13.5 x 11.2)	1	8020 1137 00 00
10	Spring Washer (M4)	1	2057 0419 00 00
11	Retaining Ring (10 x 1)	1	8030 1009 00 00
	Standard Accessories		
	Touch Joint (1/4 - 07)	1	9690 0007 00 00
	TF Pin (2 x 90)	1	8051 8001 00 00

The part "※" can not be supplied individually.
So please order it as a unit of assembly
shown by arrow mark (↑).



YOKOTA EUROPA BV

P.O. BOX 352 NL-1000 AJ AMSTERDAM PHONE 020-625 29 53 FAX 020-625 35 69

Hydraulic Impact Wrenches, Impact Wrenches, Drills, Grinders, Screwdrivers, Chippers, Saws, Pumps