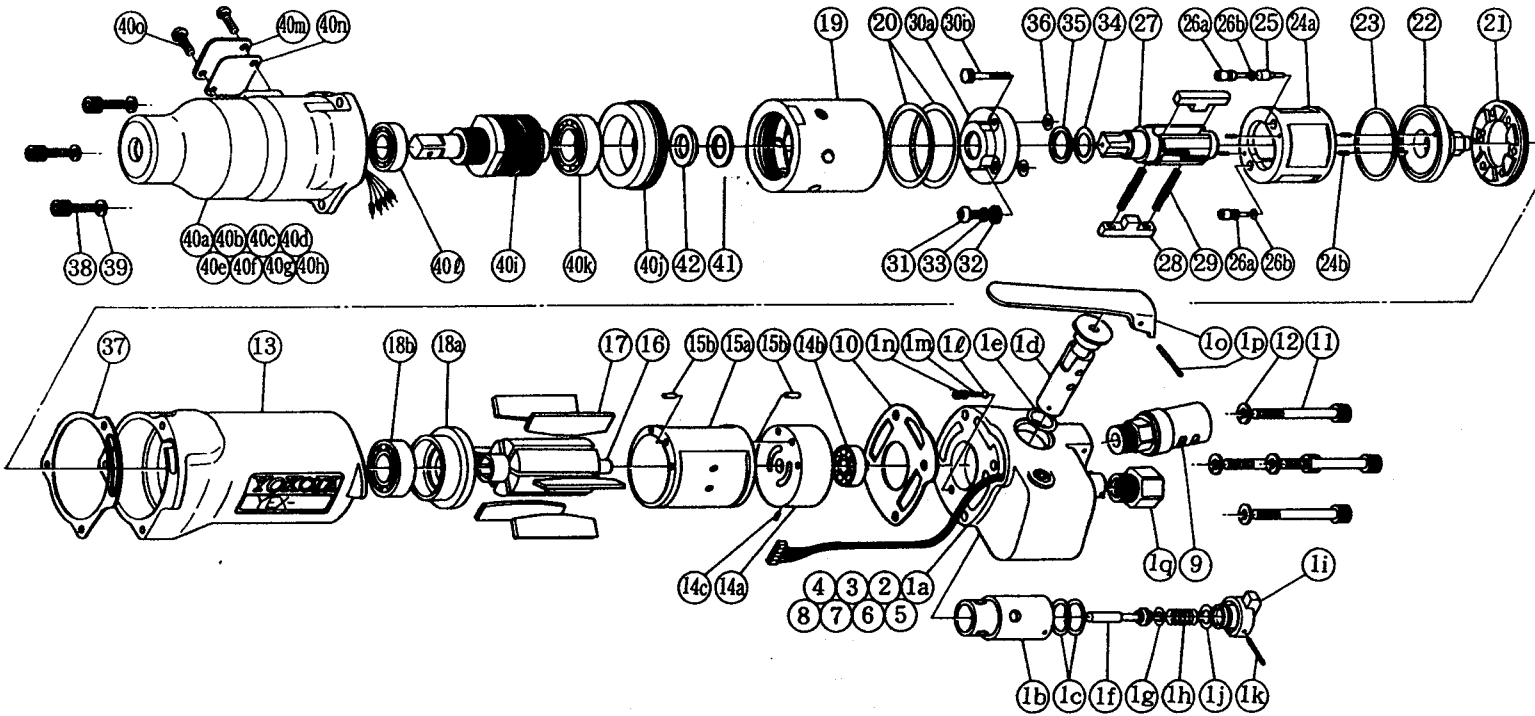


# YOKOTA

## With built-in torque sensor 2 BLADE • SYSTEM WRENCHES

MODELS (YES. NO.)	TOOL NO.
YEX-700S (01)	0131 0000 01 00

### EXPLODED VIEW



No.	Name of Parts	Per Set	Parts No.
1	Handle Assy.	1set	0131 0002 00 99
	Handle (A) Assy.	1set	0131 0002 00 98
	(a) Handle	1	* ↑
	(b) Reverse Bushing	1	* ↑
	(c) "O"Ring (N15)	2	9010 4008 00 00
	Reverse Valve Assy.	1set	0932 0005 00 99
	(d) Reverse Valve	1	* ↑
	(e) "O"Ring (N12)	1	9010 4005 00 00
	Throttle Rod Assy.	1set	0932 0106 00 99
	(f) Throttle Rod	1	* ↑
	(g) "O"Ring (No.3)	1	9010 3003 00 00
	(h) Spring (8 × 16)	1	8020 1066 00 00

No.	Name of Parts	Per Set	Parts No.
	Reverse Lever Assy.	1	0932 0007 00 99
	(i) Reverse Lever	1	* ↑
	(j) "O"Ring (P8)	1	9010 1006 00 00
	(k) Spring Roll Pin (2 × 20)	1	9250 1021 00 00
	(l) Ball (M3)	1	9150 1003 00 00
	(m) Spring (3 × 10)	1	8020 1004 00 00
	(n) Screw (M4 × 6)	1	9480 2003 00 00
	(o) Throttle Lever	1	0931 0110 00 00
	(p) Spring Roll Pin (3 × 25)	1	9250 5001 00 00
	(q) Hose Joint	1	0071 0113 00 00
2	Connector	1	★
3	Cord	1	★



# YOKOTA EUROPA BV

DE RUYTERKADE 142, AMSTERDAM PHONE (020) 25 29 53 TELEXNR ; 14022

# PARTS LIST

No.	Name of Parts	Per Set	Parts No.
4	Micro Connector	5	★
5	Buzzer Base Assy.	1set	★
6	"O"Ring (P20)	1	9010 1017 00 00
7	Snap Ring (RTW - 24)	1	9040 1014 00 00
8	Socket Plug (PT 1/8)	1	8210 2001 00 00
9	Silencer Assy.	1set	0943 0053 01 99
10	S - Packing (A)	1	0131 0003 00 01
11	Hex.Socket Bolt (M5 × 50 × 16)	4	8070 3122 00 00
12	Spring Washer (M5)	4	9200 3005 00 00
13	Motor Case	1	0131 0011 00 00
14	Upper Plate Assy.	1set	0051 0303 01 99
	(a) Upper Plate	1	0051 0303 01 00
	(b) Ball Bearing (# 607V)	1	9100 2001 00 00
	(c) Spring Roll Pin (2 × 6)	1	9250 1011 00 00
15	Cylinder Assy.	1	0123 0304 02 99
	(a) Cylinder	1	※ ↑
	(b) Spring Roll Pin (3 × 8)	2	9250 1045 00 00
16	Rotor	1	0123 0305 01 00
17	Vane	6	0123 0306 00 00
18	Lower Plate Assy.	1set	0051 0307 01 99
	(a) Lower Plate	1	0051 0307 01 00
	(b) Ball Bearing (# 6902)	1	9100 1036 00 00
19	Liner Case	1	0130 0422 00 00
20	"O"Ring (N38)	2	9010 4016 00 00
21	Liner Cap	1	0048 0423 00 00
22	Liner Upper Plate	1	0077 0424 00 00
23	"O"Ring (N32)	1	9010 4014 00 00
24	Liner Assy.	1set	0129 0425 01 99
	(a) Liner	1	※ ↑
	(b) Pin (3 × 5)	4	8052 1022 00 00
25	Relief Valve	1	0129 0245 00 00
26	Spring Guide (B) Assy.	2set	0130 0510 00 99
	(a) Spring Guide (B)	1	※ ↑
	(b)"O"Ring (N2)	1	9010 4001 00 00
27	Liner Shaft	1	0130 0796 01 00
28	Blade	2	0129 0719 01 00
29	Spring (3.6 × 26)	2	8020 1256 00 00
30	Liner Lower Plate (A) Assy.	1set	0078 0426 02 98
	(a) Liner Lower Plate	1	※ ↑
	(b) Adjust Bolt	1	0078 0522 01 00
31	Oil Plug (M4)	1	0048 0010 00 00
32	Washer (6.5 × 8.5 × 1.1)	1	8040 1073 00 00
33	"O"Ring (N4)	1	9010 4021 00 00
34	"O"Ring (2.8 × 12.8 × 18.4)	1	9010 6014 00 00
35	Backup Ring	1	9090 1005 00 00
36	"O"Ring (N5)	2	9010 4033 00 00
37	S-Packing(B)	1	0131 0003 00 02
38	Hex.Socket Bolt (M4 × 14)	3	8070 3008 00 00
39	Spring Washer (M4)	3	9200 3004 00 00

No.	Name of Parts	Per Set	Parts No.
40	Hammer Case Assy.	1set	0131 0401 00 99
	(a) Hammer Case	1	※ ↑
	(b) Core (A)	1	※ ↑
	(c) Core (B)	1	※ ↑
	(d) Spacer (A)	1	※ ↑
	(e) Core (C)	1	※ ↑
	(f) Core (D)	1	※ ↑
	(g) Screw (M4 × 5)	1	※ ↑
	(h) Micro Connector	5	※ ↑
	(i) Main Shaft Assy.	1set	※ ↑
	(j) Bearing Case	1	※ ↑
	(k) Ball Bearing (# 6903ZZ)	1	※ ↑
	(l) Ball Bearing (# 6901ZZ)	1	※ ↑
	(m) Cover Plate	1	0131 0014 00 00
	(n) S - Packing (C)	1	0131 0003 00 03
	(o) Screw (M4 × 8)	2	9460 2002 00 00
41	Washer (12 × 21 × 1.0)	1	8042 1004 00 00
42	Washer (12.5 × 20 × 2.3)	1	8041 5006 00 00
	Standard Accessories		
	Hanger	1	0004 0017 00 00
	Touch Joint (¼)	1	9690 0007 00 00
	Pin (φ 2.0 × 90)	1	8051 6001 00 00

The part marked "※" can not be supplied individually. So please order it as a unit of assembly shown by arrow mark (↑).  
The part marked "★" can not be supplied individually. So please order it as a unit of Handle assembly.