

Parts for Motor Case

No.	Name of Parts	Per Set	Parts No.
M	Motor Case Assy.	1set	9238 0611 01 99
M1	Motor Case (A) Assy.	1set	9238 0611 00 99
A1	Motor Case (D) Assy.	1set	9238 0611 00 97
	(a) Motor Case	1	9232 0611 00 00
	(b) Inner Gasket (8 x 8)	1	9400 1010 00 00
	Throttle Bushing Assy.	1set	2650 0104 00 99
	(a) Throttle Bushing	1	※
	(b) O'Ring (Ø16)	3	9010 4008 00 00
	Throttle Rod Bushing Assy.	1set	0978 0105 00 99
	(a) Throttle Rod Bushing	1	※
	(b) O'Ring (No.5)	1	9010 3021 00 00
	Throttle Rod Assy.	1set	2650 0106 00 99
	(a) Throttle Rod	1	※
	(b) O'Ring (Ø2)	1	9010 4001 00 00
	(c) Throttle Knob	1	2624 0153 00 00
	(d) Spring Roll Pin (1.5 x 14)	1	9250 1005 00 00
	(e) Snap Ring (RTW - 2.8)	1	9040 5008 00 00
	(f) Reverse Bushing	1	0948 0004 01 00
	(g) Reverse Valve	1	0948 0005 01 00
	(h) Spring (3 x 10)	1	9020 1004 00 00
	(i) Ball (1/8)	1	9150 3008 00 00
	(j) Snap Ring (RTW - 12)	1	9040 3002 00 00
	(k) Reverse Lever	1	0948 0007 01 00
	(l) Spring Roll Pin (3 x 14)	1	9250 1049 00 00
	(m) Spring Roll Pin (3 x 10)	1	9250 1082 00 00
A2	Hex Joint	1	9078 0113 00 00
A3	Silencer Assy.	1set	0405 0053 01 99
A4	S - Packing (A)	1	0232 0003 00 01
A5	Motor Case Cover	1	0232 0001 00 00
A6	Hex Socket Bolt (M6 x 14 (L.8))	3	9070 3050 00 00
A7	Spring Washer (M6)	3	9200 2005 00 00
A8	Upper Plate Assy.	1set	0947 0303 00 99
	(a) Upper Plate	1	0947 0303 00 99
	(b) Ball Bearing (ø 6000)	1	9100 1015 00 00
	(c) Spring Roll Pin (2 x 6)	2	9250 0001 00 00
A9	Cylinder	1	0213 0304 00 00
A10	Rotor	1	0213 0305 00 00
A11	Van	6	0213 0306 00 00
A12	Lower Plate Assy.	1set	0941 0307 00 99
	(a) Lower Plate	1	0941 0307 00 00
	(b) Ball Bearing (ø 6008)	1	9100 1018 00 00
	(c) Spring Roll Pin (2 x 6)	1	9250 0001 00 00
M2	Holder Assy.	1set	0270 0717 00 99
M3	Tube (ø 8 x 15)	1	9390 5007 00 00
M4	NO: Used		
M5	Pipe	1	0078 0813 00 00
M6	Socket Housing (D3C - 130)	5	8470 2001 00 00
M7	Tube (WCL/2 x 1.5)	1	9390 5005 00 00
M8	Socket Contact (170205 - 1)	2	8480 1001 00 00
M9	Socket Housing (171822 - 2)	1	8470 1001 00 00
M10	Buzzer Base Assy.	1set	0127 0706 00 99
M11	Cover	1	0230 0708 00 00
M12	Screw (M3 x 6 x 0.5)	2	9400 2014 00 00

The part "※" can not be supplied individually. So please order it as a unit of assembly shown by arrow mark (↑).

P.9508

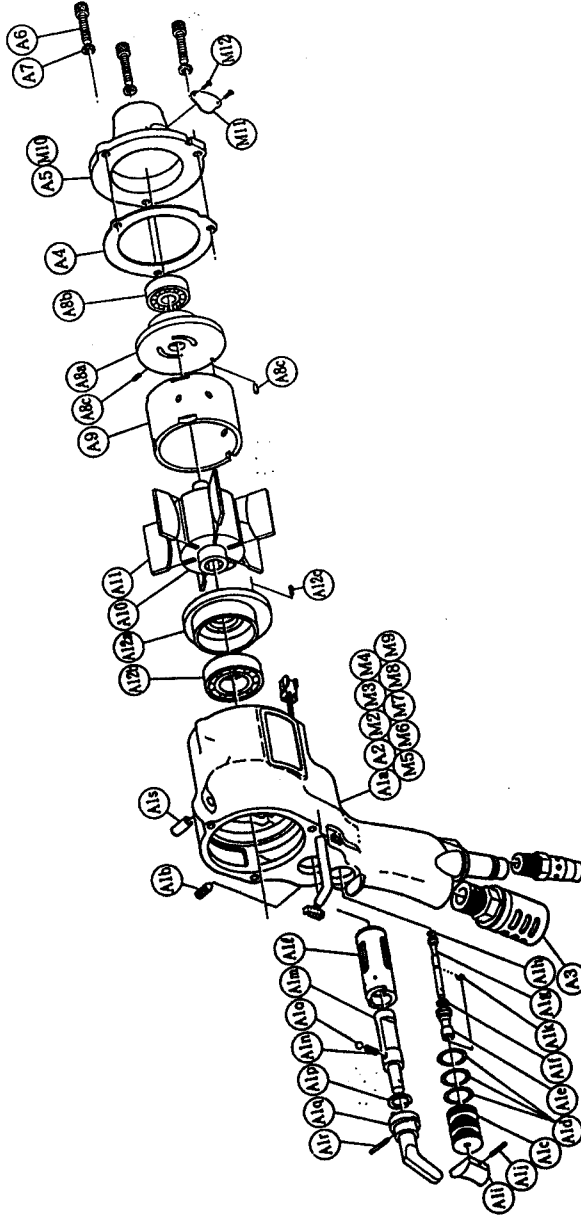
yokota

HYDRAULIC SYSTEMS & AIR TOOLS

With built-in torque sensor
2 BLADE • SYSTEM WRENCH

MODEL (YES. NO.)	TOOL NO.
YEX-901 (02)	0261 0000 02 00

■ Exploded View of Motor Case



YOKOTA EUROPA BV

P.O. BOX 392 NL - 1000 AJ - AMSTERDAM PHONE 020 - 625 29 53 FAX 020 - 625 35 69
 Hydraulic Impact Wrenches, Impact Wrenches, Drills, Grinders, Screwdrivers, Chippers, Sealers, Pumps.

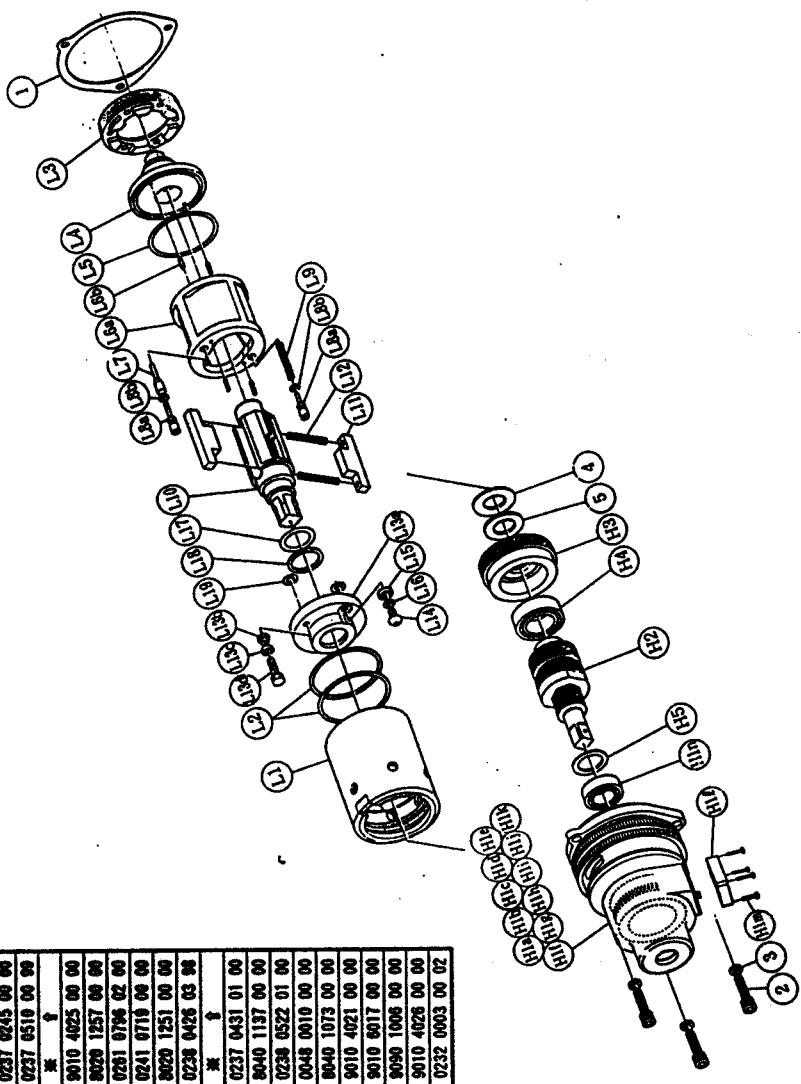


2 BLADE SYSTEM WRENCH

With built-in torque sensor

MODEL (YES. NO.)	TOOL NO.
YEX-901 (0.2)	0261 0000 02 00

Exploded View of Liner Case and Hammer Case



Parts for Liner Case

No.	Name of Parts	Per Set	Parts No.
L	Liner Case Assy.	1set	0261 0422 02 99
L1	Liner Case	1	0238 0422 00 00
L2	O'Ring	2	9010 4043 00 00
L3	Liner Cap	1	0213 0423 00 00
L4	Liner Upper Plate	1	0237 0424 00 00
L5	O'Ring	1	9010 4031 00 00
L6	Liner Assy.	1set	0237 0425 02 99
	(a) Liner	1	* ↑
	(b) AA Pin	4	9051 3083 00 00
L7	Solid Valve	1	0237 0245 00 00
L8	Spring Guide (B) Assy.	2set	0237 0519 00 00
	(a) Spring Guide (B)	1	* ↑
	(b) O'Ring	1	9010 4025 00 00
L9	Spring	1	9020 1257 00 00
L10	Liner Shaft	1	0281 0798 02 00
L11	Blade	2	0241 0718 00 00
L12	Spring	2	9020 1251 00 00
L13	Liner Lower Plate (A) Assy.	1set	0238 0426 03 99
	(a) Liner Lower Plate	1	* ↑
	(b) Nylon Bushing	1	0237 0431 01 00
	(c) Washer	1	9040 1137 00 00
	(d) Adjust Bolt	1	0238 0522 01 00
L14	Oil Plug	1	0048 0010 00 00
L15	Washer	1	9040 1073 00 00
L16	O'Ring	1	9010 4021 00 00
L17	O'Ring	1	9010 4017 00 00
L18	Backup Ring	1	9090 1006 00 00
L19	O'Ring	2	9010 4028 00 00
	S-Packing (B)	1	0232 0003 00 02

Parts for Hammer Case

No.	Name of Parts	Per Set	Parts No.
H	Hammer Case Assy.	1set	0261 0401 01 99
H1	Hammer Case (A) Assy.	1set	0238 0401 00 98
	(a) Hammer Case	1	* ↑
	(b) Core (A) Assy.	1	* ↑
	(c) Core (B)	1	* ↑
	(d) Spacer (A)	1	* ↑
	(e) Core (C)	1	* ↑
	(f) Core (D) Assy.	1set	* ↑
	(g) Screw	1	* ↑
	(h) Print Base (B) Assy.	1set	* ↑
	(i) O'Ring	1	* ↑
	Slide Cover Assy.	1set	0232 0035 00 99
	(j) Slide Cover	1	* ↑
	(k) O'Ring	1	9010 4038 00 00
	(l) Cover Plate	1	0127 0014 00 00
	(m) Screw	4	9460 2005 00 00
	(n) Ball Bearing	1	9100 5027 00 00
H2	Main Shaft Assy.	1set	0261 0614 01 99
H3	Bearing Case	1	0127 0650 00 00
H4	Ball Bearing	1	9100 5025 00 00
H5	Spacer (C)	1	0238 0119 00 03
	Hex. Socket Bolt	3	9070 3052 00 00
3	Spring Washer	3	9200 3005 00 00
4	Washer	1	9042 1008 00 00
5	Washer	1	9041 5013 00 00
	Standard Accessories		
	Touch Idiot	1	9690 0007 00 00
	TP Pin	1	9051 6001 00 00

The part * can not be supplied individually.
So please order it as a unit of assembly shown by arrow mark (↑).

YOKOTA EUROPA BV
P.O. BOX 352 HL - 1000 AJ AMSTERDAM. PHONE 020 - 625 29 53 FAX 020 - 625 35 69
Hydraulic Impact Wrenches, Impact Wrenches, Drills, Grinders, Screwdrivers, Chippers, Sockets, Pumps.