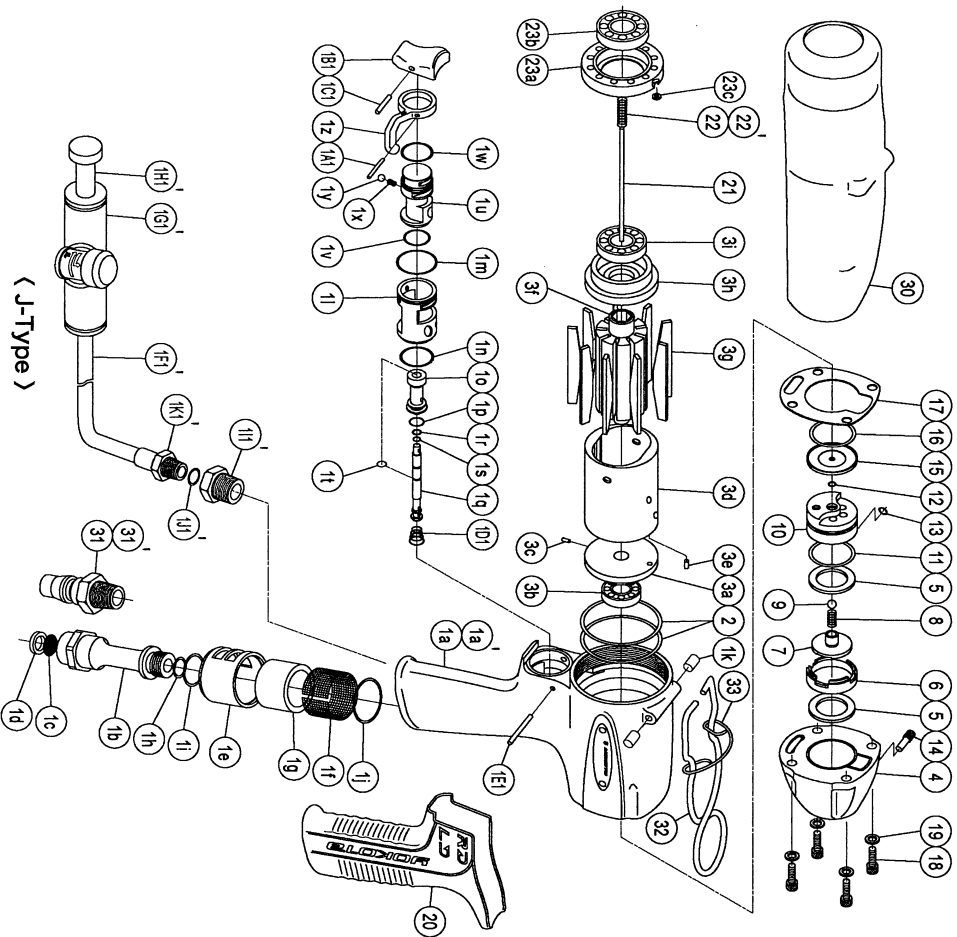


IMPULSE WRENCH

MODEL (YES.No.)	TOOL No.	MODEL (YES.No.)	TOOL No.
YL110 (00)	0379 0000 0000	YL110E (00)	0379 0000 0009
YL110L (00)	0379 0000 0008	YL110EL (00)	0379 0000 0084

Exploded View of Motor Case



Parts for Motor Case

No.	Name of Parts	Per Set	Parts No.
1	Motor Case Assy.	1set	0379 0011 00 99
(a)	Motor Case	1	※ ↑
(b)	Hose Joint Assy.	1set	0187 0113 00 99
(c)	Hose Joint	1	0259 0111 00 00
(d)	Strainer	1	※ ↑
(e)	Washer (7.5x11x2)	1	8042 2008 00 00
(f)	Exhaust Cover	1	0379 0016 00 00
(g)	Silencer Sheet (A)	1	0141 0032 00 01
(h)	Silencer Sheet (D)	1	0187 0032 00 04
(i)	O-Ring (S10)	1	9010 4004 00 00
(j)	O-Ring (S16)	1	9010 4009 00 00
(k)	O-Ring (1x20x22)	1	9010 6043 00 00
(l)	Spring Pin (5x8)	2	9250 2027 00 00
(m)	Throttle Assy.	1set	0379 0186 00 99
(n)	Throttle Bushing	1	0187 0104 00 00
(o)	O-Ring (0.7x19.6x21)	1	9010 6038 00 00
(p)	O-Ring (S18)	1	9010 4023 00 00
(q)	Throttle Rod Bushing Assy.	1set	0187 0105 00 99
(r)	O-Ring (P8)	1	※ ↑
(s)	Throttle Rod Assy.	1set	0187 0106 01 99
(t)	Throttle Rod	1	0187 0106 01 00
(u)	O-Ring (0.5x3.7x4.7)	1	9010 6034 00 00
(v)	O-Ring (S4)	1	9010 4058 00 00
(w)	Snap Ring (ETW-28)	1	9040 5008 00 00
(x)	Reverse Valve	1	0379 0005 00 00
(y)	O-Ring (0.6x1.6x1.72)	1	9010 6039 00 00
(z)	O-Ring (S15)	1	9010 4008 00 00
(aa)	Spring (3x4)	1	8020 1248 00 00
(ab)	Ball (1/8)	1	9150 3009 00 00
(ac)	Reverse Lever	1	2331 0007 00 00
(ad)	Spring Pin (2x12)	1	9250 1015 00 00
(ae)	Throttle Knob	1	0158 0153 00 00
(af)	Spring Pin (1.5x1.4)	1	9250 1005 00 00
(ag)	Conical Spring (5.24x7.6x7)	1	8020 3070 00 00
(ah)	Pin (2x22)	1	8055 1050 00 00
(ai)	O-Ring (S42)	2	9010 4018 00 00
2	Motor Assy.	1set	0379 0305 00 99
(a)	Upper Plate Assy.	1set	0379 0303 00 99
(b)	Upper Plate	1	0379 0303 00 00
(c)	Ball Bearing (6900CM)	1	9102 1001 00 00
(d)	Pin (2x5)	1	8055 1040 00 00
(e)	Cylinder Assy.	1set	0379 0304 00 99
(f)	Cylinder	1	※ ↑
(g)	Pin (2.5x6)	1	8055 1053 00 00
(h)	Rotor	1	0379 0305 00 00
(i)	Vane	9	0379 0306 00 00
(j)	Lower Plate Assy.	1set	0379 0307 00 99
(k)	Lower Plate	1	0379 0307 00 00
(l)	Ball Bearing (6902CM)	1	9102 1004 00 00

No.	Name of Parts	Per Set	Parts No.
4	Motor Case Cover	1	0379 0001 00 00
5	Back-up Ring (19x26x1.5)	2	9090 1035 00 00
6	Buffer Plate	1	0379 0297 00 00
7	Shut Off Valve	1	0379 0295 00 00
8	Spring (3.95x8.4)	1	8020 1382 00 00
9	Ball (4mm)	1	9150 1005 00 00
10	Shut Off Valve Bushing	1	0379 0296 00 00
11	O-Ring (S22)	1	9010 4011 00 00
12	O-Ring (N2)	1	9010 4001 00 00
13	O-Ring (1.4x2.16x4.96)	1	9010 6068 00 00
14	Valve Plug	1	0379 0298 00 00
15	Upper Plate Spacer	1	0379 0301 00 00
16	O-Ring (S22)	1	9010 4011 00 00
17	S-Packing	1	0379 0003 00 00
18	Hexagon Socket Bolt (M4x10)	4	8070 3159 00 00
19	Washer (4x6.6x1.2)	4	8041 6016 00 00
20	Rubber Grip	1	0188 0144 00 00
21	Rod	1	0379 1368 00 00
22	Spring (4.3x21)	1	8020 1367 00 00
23	Lower Plate Spacer Assy.	1set	0379 0311 00 99
(a)	Lower Plate Spacer	1	0379 0311 00 00
(b)	Ball Bearing (6802)	1	9100 1053 00 00
(c)	Washer (WSSB4-2-2)	1	8041 6015 00 00

Parts for YL110L-110EL			
22'	Spring (4.2x20)	1	8020 1369 00 00

Parts for YL110E-110EL			
31'	Hose Nipple Assy. (XA-352)	1set	8110 1004 00 99

Special Common Parts for J Type			
1'	Motor Case Assy.	1set	0379 0011 00 99
(a)	Motor Case(A)	1	※ ↑
(f)	Tube (4x2.5x150mm)	1	9380 6037 00 00
(g)	Tube Joint	1	9643 4002 00 00
(h)	Blank Plug	1	9641 3006 00 00
(i)	Bushing	1	0371 0728 00 00
(j)	O-Ring (1.19x1.78x4.16)	1	9010 6074 00 00
(k)	Hose Nipple	1	0371 0151 00 00

Standard Accessories			
30	Protector	1	0379 0029 00 00
31	Touch Joint	1	9690 0002 00 00
32	Hanger	1	0099 0017 00 00
33	Hanger Clip	1	0190 1801 00 00
	Hex. Wrench (H1.5x65x65)	1	9610 1012 00 00
	Hex. Wrench (H5/32)	1	9610 3008 00 00

The part "※" can not be supplied individually.
So please order it as a unit of assembly shown by arrow mark (↑).



YOKOTA EUROPA BV

De Ruijterkade 12Q, 1011 AB Amsterdam, Netherlands PHONE: 020-5318900 FAX: 020-5318908
E-mail: info@impulsetools.com http://www.impulsetools.com
Hydraulic Impulse Wrenches, Impact Wrenches, Drills, Grinders, Screw Drivers, Callipers, Scales, Pumps

