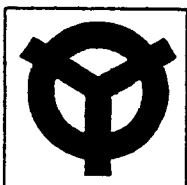
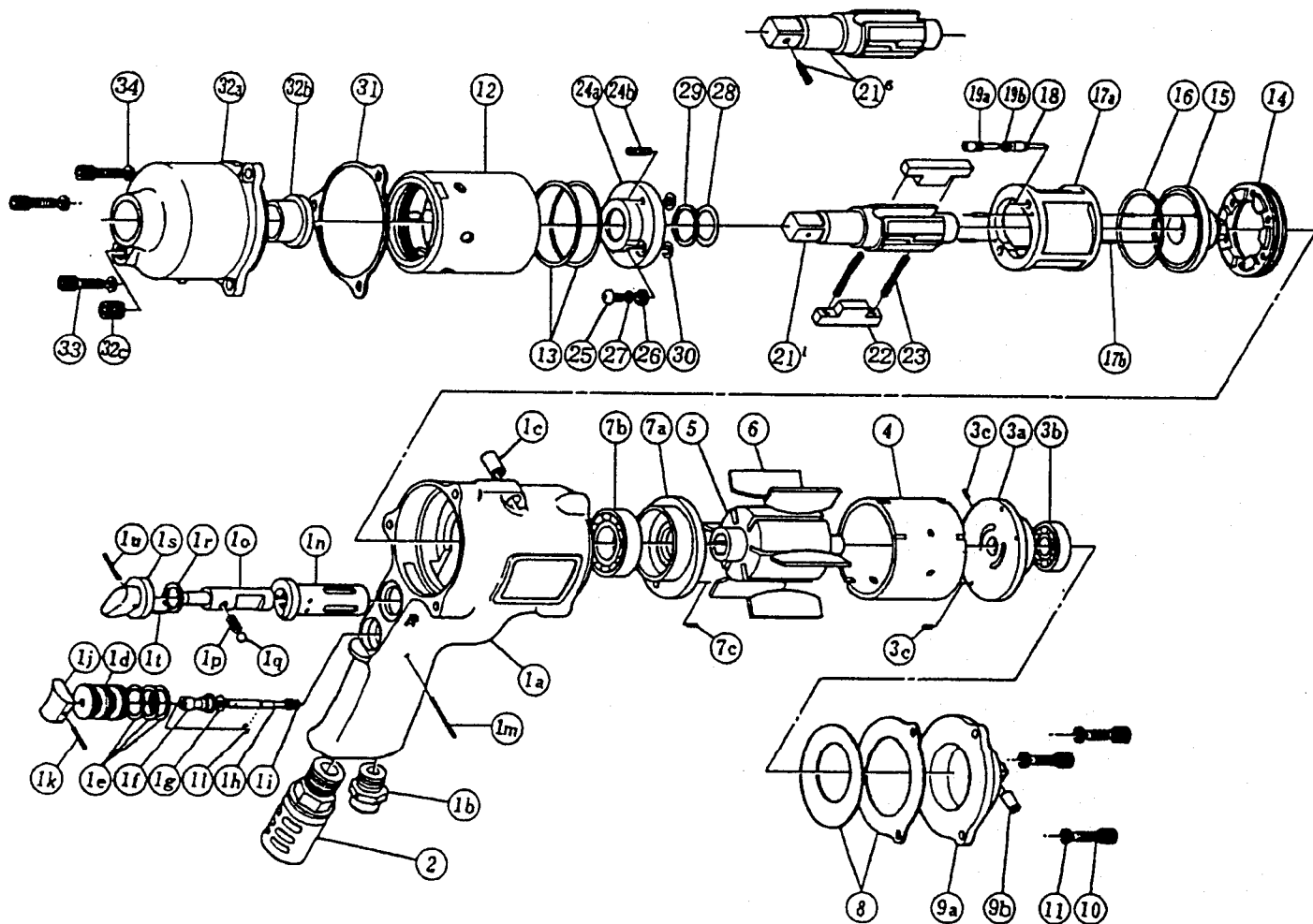


## 2 BLADE IMPULSE WRENCHES

MODELS (YES No.)	TOOL No.
YX - 1100 (03)	0241 0000 03 00
YX - 1100E (03)	0241 0000 03 04

### EXPLODED VIEW



# YOKOTA EUROPA BV

P.O. BOX 392 NL-1000 AJ AMSTERDAM PHONE 020-625 29 53 FAX 020-625 35 69

Hydraulic Impulse Wrenches, Impact Wrenches, Drills, Grinders, Screw drivers, Chippers, Scalars, Pumps.

# ■ PARTS LIST

No.	Name of Parts	Per Set	Parts No.
1	Motor Case Assy.	1set	0241 0011 00 99
	(a) Motor Case	1	0241 0011 00 00
	(b) Hose Joint	1	0237 0113 00 00
	(c) Spring Roll Pin (8 × 12)	1	9250 1110 00 00
	Throttle Bushing Assy.	1set	2058 0104 00 99
	(d) Throttle Bushing	1	※ ↑
	(e) O Ring (N15)	3	9010 4008 00 00
	Throttle Rod Bushing Assy.	1set	0078 0105 00 99
	(f) Throttle Rod Bushing	1	※ ↑
	(g) O Ring (No.3)	1	9010 3021 00 00
	Throttle Rod Assy.	1set	2058 0106 00 99
	(h) Throttle Rod	1	※ ↑
	(i) O Ring (N2)	1	9010 4001 00 00
	(j) Throttle Knob	1	2024 0153 00 00
	(k) Spring Roll Pin (1.5 × 14)	1	9250 1005 00 00
	(l) Snap Ring (ETW-2.8)	1	9040 5008 00 00
	(m) Pin G (3 × 24)	1	8410 6024 00 00
	(n) Reverse Bushing	1	0217 0004 00 00
	(o) Reverse Valve	1	0217 0005 00 00
	(p) Spring (4.5 × 15)	1	8020 1016 00 00
	(q) Ball (3/16)	1	9150 3005 00 00
(r) Snap Ring (IRTW-12)	1	9040 3002 00 00	
Reverse Lever Assy.	1set	0237 0007 00 99	
(s) Reverse Lever	1	※ ↑	
(t) Spring Roll Pin (2 × 6)	1	9250 1011 00 00	
(u) Spring Roll Pin (2 × 12)	1	9250 1015 00 00	
2	Silencer Assy.	1set	0936 0053 01 99
3	Upper Plate Assy.	1set	0947 0303 00 99
	(a) Upper Plate	1	0947 0303 00 00
	(b) Ball Bearing (6000)	1	9100 1015 00 00
	(c) Spring Roll Pin (2 × 5)	2	9250 6001 00 00
4	Cylinder	1	0241 0304 00 00
5	Rotor	1	0241 0305 00 00
6	Vane	6	0241 0306 00 00
7	Lower Plate Assy.	1set	0947 0307 00 99
	(a) Lower Plate	1	0947 0307 00 00
	(b) Ball Bearing (6003)	1	9100 1018 00 00
	(c) Spring Roll Pin (2 × 5)	1	9250 6001 00 00
8	S-Packing (A)	1	0213 0003 00 01
	S-Packing (C)	1	0938 0003 00 03
9	Motor Case Cover Assy.	1set	0213 0001 00 99
	(a) Motor Case Cover	1	※ ↑
	(b) Spring Roll Pin (6 × 12)	1	9250 1083 00 00
10	Hex. Socket Bolt (M5 × 16)	3	8070 3051 00 00

No.	Name of Parts	Per Set	Parts No.
11	Spring Washer (M5)	3	9200 3005 00 00
12	Liner Case	1	0237 0422 00 00
13	O Ring (N45)	2	9010 4043 00 00
14	Liner Cap	1	0213 0423 00 00
15	Liner Upper Plate	1	0237 0424 00 00
16	O Ring (N39)	1	9010 4031 00 00
	Liner Assy.	1	0237 0425 02 99
	(a) Liner	1	※ ↑
	(b) AA Pin (3 × 7)	4	8051 3093 00 00
18	Relief Valve	1	0241 0245 00 00
19	Spring Guide (B) Assy.	1set	0237 0510 00 99
	(a) Spring Guide (B)	1	※ ↑
	(b) O Ring (N3)	1	9010 4025 00 00
21 <sup>1</sup>	Main Shaft	1	0237 0614 04 01
22	Blade	2	0241 0719 00 00
23	Spring (4 × 32)	2	8020 1251 00 00
24	Liner Lower Plate (A) Assy.	1set	0237 0426 03 98
	(a) Liner Lower Plate	1	※ ↑
	(b) Screw (M4 × 14)	1	9480 2022 00 00
25	Oil Plug (M4)	1	0048 0010 00 00
26	Washer (6.5 × 8.5 × 1.1)	1	8040 1073 00 00
27	O Ring (N4)	1	9010 4021 00 00
28	O Ring (2.55 × 17.8 × 22.9)	1	9010 6017 00 00
29	Backup Ring (18 × 22.4 × 0.8)	1	9090 1006 00 00
30	O Ring (N6)	2	9010 4026 00 00
31	S-Packing (B)	1	0213 0003 00 02
32	Hammer Case (A) Assy.	1set	0237 0401 01 99
	(a) Hammer Case (A)	1	0237 0401 00 01
	(b) Main Shaft Bushing	1	0229 0612 00 00
	(c) Socket Plug (1/8)	1	8210 5001 00 00
33	Hex. Socket Bolt (M5 × 16)	3	8070 3051 00 00
34	Spring Washer (M5)	3	9200 3005 00 00
Exclusive use for YX-1100E			
21 <sup>6</sup>	Main Shaft Assy.	1set	0237 0614 06 59
Standard Accessories			
	Touch Joint (1/4)	1	9690 0002 00 00
	Hexagon Wrenche (H2L)	1	9610 1013 00 00
	Hexagon Wrenche (H5)	1	9610 1006 00 00
Optional Accessories			
	Tune Up Kit	1set	0237 0991 00 99

The part marked "※" can not be supplied individually. So please order it as a unit of assembly shown by arrow mark (↑).