

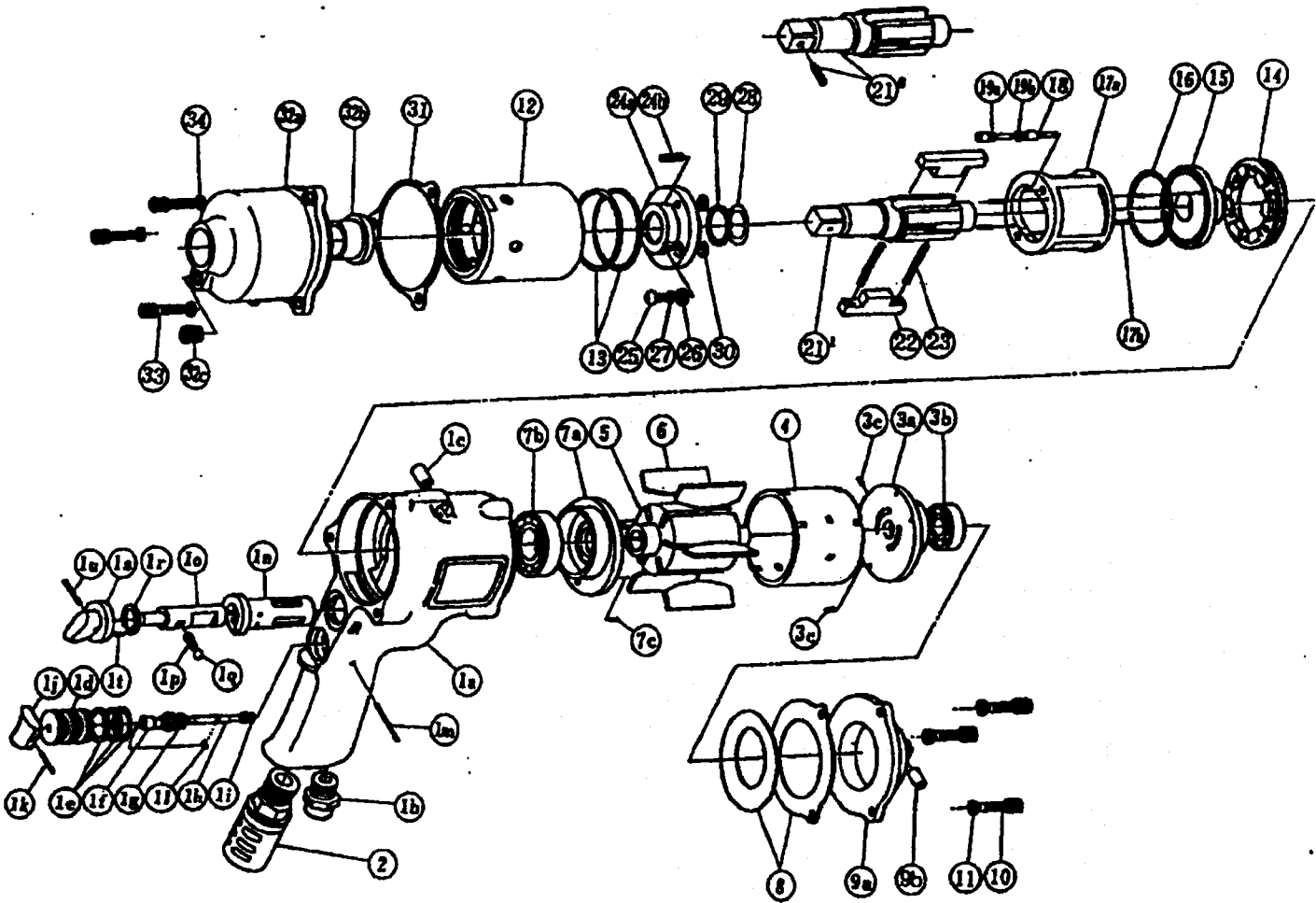
yokota

HYDRAULIC SYSTEMS & AIR TOOLS

TWIN 2 BLADE IMPULSE WRENCHES

MODEL (YES. NO.)	TOOL NO.
YX - 1400 (05)	0322 0000 05 04

EXPLODED VIEW



YOKOTA EUROPA BV

PO BOX 991 1000 AJ AMSTERDAM PHONE 020 - 625 29 53 FAX 020 - 625 35 69
 Hydraulic Impulse Wrenches, Impact Wrenches, Drills, Grinders, Screwdrivers, Clippers, Sealers, Pumps.

部 品 表

No.	Name of Parts	Per Set	Parts No.	No.	Name of Parts	Per Set	Parts No.
1	Motor Case Assy.	1set	0322 0011 00 99	12	Liner Case	1	0322 0422 01 00
	(a) Motor Case	1	0322 0011 00 00	13	"O"Ring	2	9010 4042 00 00
	(b) Hose Joint	1	0237 0113 00 00	14	Liner Cap	1	0322 0423 00 00
	(c) Spring Roll Pin	1	9250 1110 00 00	15	Liner Upper Plate	1	0322 0424 00 00
	Throttle Bushing Assy.	1set	0229 0104 00 99	16	"O"Ring	1	9010 4020 00 00
	(d) Throttle Bushing	1	* †	17	Liner Assy.	1	0322 0425 02 99
	(e) "O"Ring	3	9010 4008 00 00	(a) Liner	1	* †	
	Throttle Rod Bushing Assy.	1set	0323 0105 00 99	(b) AA Pin	4	8051 3003 00 00	
	(f) Throttle Rod Bushing	1	* †	18	Relief Valve	1	0322 0245 00 00
	(g) "O"Ring	1	9010 3022 00 00	19	Spring Guide (B) Assy.	1set	0322 0510 00 99
	Throttle Rod Assy.	1set	0229 0106 00 99	(a) Spring Guide (B)	1	* †	
	(h) Throttle Rod	1	* †	(b) "O"Ring	1	9010 4025 00 00	
	(i) "O"Ring	1	9010 4001 00 00	20	Not Used		
	(j) Throttle Knob	1	2024 0153 00 00	21 ^o	Main Shaft (P) Assy.	1set	0322 0614 05 59
	(k) Spring Roll Pin	1	9250 1005 00 00	22	Blade	2	0322 0719 01 00
	(l) Snap Ring	1	9040 5008 00 00	23	Spring	2	8020 1257 00 00
	(m) G Pin	1	8410 0024 00 00	24	Liner Lower Plate (A) Assy.	1set	0322 0426 04 98
	(n) Reverse Bushing	1	0229 0004 00 00	(a) Liner Lower Plate	1	* †	
	(o) Reverse Valve	1	0320 0005 00 00	(b) Screw	1	9480 2022 00 00	
	(p) Spring	1	8020 1022 00 00	25	Oil Plug	1	0048 0010 00 00
	(q) Ball	1	9150 1005 00 00	26	Washer	1	8040 1073 00 00
(r) Snap Ring	1	9040 3004 00 00	27	"O"Ring	1	9010 4021 00 00	
Reverse Lever Assy.	1set	0322 0007 00 99	28	"O"Ring	1	9010 6017 00 00	
(s) Reverse Lever	1	* †	29	Backup Ring	1	9090 1006 00 00	
(t) Spring Roll Pin	1	9250 1011 00 00	30	"O"Ring	2	9010 4033 00 00	
(u) Spring Roll Pin	1	9250 1049 00 00	31	S - Packing	1	0322 0003 00 02	
2	Silencer Assy.	1set	3048 0053 02 99	32	Hammer Case Assy.	1set	0322 0401 01 99
3	Upper Plate Assy.	1set	0941 0303 01 99	(a) Hammer Case	1	0322 0401 00 00	
	(a) Upper Plate	1	0941 0303 01 00	(b) Main Shaft Bushing	1	0229 0612 00 00	
	(b) Ball Bearing	1	9100 1021 00 00	(c) Socket Plug	1	8210 2001 00 00	
	(c) Spring Roll Pin	2	9250 6002 00 00	33	Hex. Socket Bolt	3	8070 3052 00 00
4	Cylinder	1	0322 0304 00 00	34	Spring Washer	3	9200 3005 00 00
5	Rotor	1	0322 0305 00 00				
6	Vane	6	0322 0306 00 00				
7	Lower Plate Assy.	1set	0941 0307 00 99	Optional Parts			
	(a) Lower Plate	1	0941 0307 01 00	21 ¹	Main Shaft	1	0322 0614 04 01
	(b) Ball Bearing	1	9100 1019 00 00				
	(c) Spring Roll Pin	1	9250 6002 00 00				
8	S - Packing (A)	1	0322 0003 00 01				
9	Motor Case Cover Assy.	1set	0322 0001 00 99				
	(a) Motor Case Cover	1	* †				
	(b) Spring Roll Pin	1	9250 6002 00 00				
10	Hex. Socket Bolt	3	8070 3052 00 00				
11	Spring Washer	3	9200 3005 00 00				

The part marked "*" can not be supplied individually. So please order it as a unit of assembly shown by arrow mark (†).