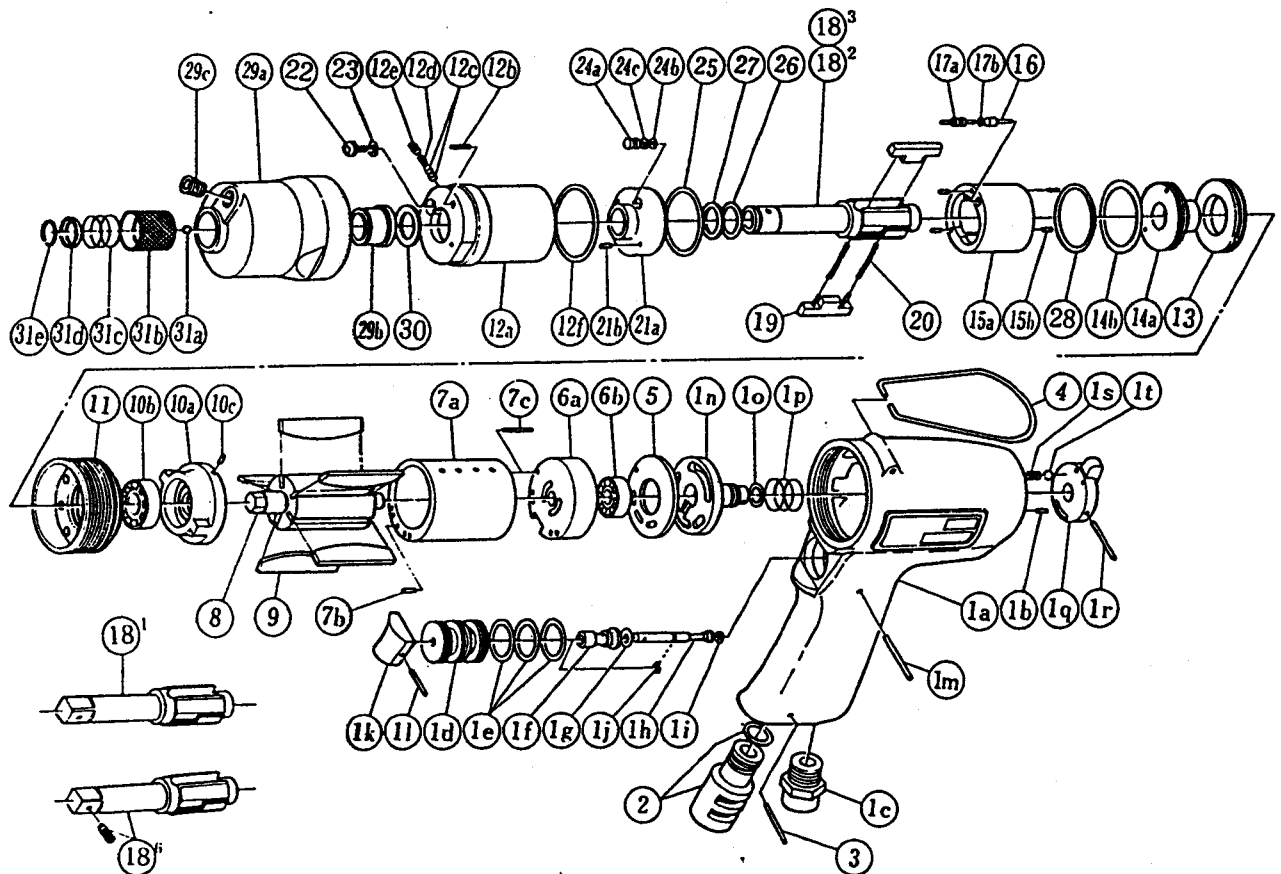


## TWIN 2 BLADE IMPULSE WRENCHES

MODELS (YES. NO.)	TOOL NO.
YX-280 (05)	0081 0000 05 04
YX-280A (05)	0081 0000 05 01
YX-280B (05)	0081 0000 05 02

### EXPLODED VIEW



# YOKOTA EUROPA BV

P.O. BOX 392 NL-1000 AJ AMSTERDAM PHONE 020-625 29 53 FAX 020-625 35 69

Hydraulic Impulse Wrenches, Impact Wrenches, Drills, Grinders, Screwdrivers, Chippers, Scalars, Pumps.

# ■ PARTS LIST

No.	Name of Parts	Per Set	Parts No.	No.	Name of Parts	Per Set	Parts No.
1	Motor Case Assy.	1set	0081 0011 02 99	13	Liner Cap	1	0081 0423 01 00
	(a)Motor Case	1	0081 0011 02 00	14	Liner Upper Plate Assy.	1set	0259 0424 01 00
	(b)Spring Roll Pin	1	9250 1043 00 00		(a)Liner Upper Plate	1	※ ↑
	(c)Hose Joint	1	0237 0113 00 00	(b)"O"Ring	1	9010 6023 00 00	
	Throttle Bushing Assy.	1set	2058 0104 00 99	15	Liner Assy.	1set	0259 0425 00 99
	(d)Throttle Bushing	1	※ ↑		(a)Liner	1	※ ↑
	(e)"O"Ring	3	9010 4008 00 00	(b)AA Pin	4	8051 3091 00 00	
	Throttle Rod Bushing Assy.	1set	0078 0105 00 99	16	Relief Valve	1	0081 0245 01 00
	(f)Throttle Rod Bushing	1	※ ↑		17	Spring Guide(B) Assy.	1set
	(g)"O"Ring	1	9010 3021 00 00	(a)Spring Guide(B)		1	※ ↑
	Throttle Rod Assy.	1set	2058 0106 00 99	(b)"O"Ring	1	9010 6020 00 00	
	(h)Throttle Rod	1	※ ↑	18 <sup>2</sup>	Main Shaft(A) YX-280A	1	0081 0614 04 51
	(i)"O"Ring	1	9010 4001 00 00	18 <sup>3</sup>	Main Shaft(B) YX-280B	1	0081 0614 04 52
	(j)Snap Ring	1	9040 5008 00 00	18 <sup>6</sup>	Main Shaft(P) Assy. YX-280	1set	0081 0614 05 59
	(k)Throttle Knob	1	2024 0153 00 00	19	Blade	2	0081 0719 03 00
	(l)Spring Roll Pin	1	9250 1005 00 00		20	Spring	2
	(m)G Pin	1	8410 6024 00 00	21		Liner Lower Plate Assy.	1set
	Reverse Valve Assy.	1set	2096 0005 00 99		(a)Liner Lower Plate	1	※ ↑
	(n)Reverse Valve	1	※ ↑	(b)Spring Roll Pin	1	9250 2022 00 00	
	(o)"O"Ring	1	9010 1005 00 00	22	Oil Plug	1	0081 0010 00 00
	(p)Spring	1	8020 1209 00 00		23	"O"Ring	1
	(q)Reverse Lever	1	2014 0007 01 00	24		Oil Stop Cap Assy.	1set
	(r)FF Pin	1	8055 1050 00 00		(a)Oil Stop Cap	1	※ ↑
(s)Spring	1	8020 1008 00 00	(b)"O"Ring		1	9010 4001 00 00	
(t)Ball	1	9150 1003 00 00	(c)Backup Ring	1	9090 2001 00 00		
2	Silencer Assy.	1set	0081 0053 00 99	25	"O"Ring	1	9010 6012 00 00
3	Spring Roll Pin	1	9250 1050 00 00	26	"O"Ring	1	9010 6019 00 00
4	Hanger	1	0004 0017 00 00	27	Backup Ring	1	9090 1010 00 00
5	Upper Plate Spacer	1	2096 0301 00 00	28	"O"Ring	1	9010 6023 00 00
	Upper Plate Assy.	1set	0081 0303 01 99	29	Hammer Case Assy.	1set	0081 0401 01 99
(a)Upper Plate	1	0081 0303 01 00	(a)Hammer Case		1	0081 0401 01 00	
(b)Ball Bearing	1	9100 1060 00 00	(b)Main Shaft Bushing		1	0081 0612 00 00	
7	Cylinder Assy.	1set	0081 0304 01 99	(c)Socket Plug	1	8210 5001 00 00	
	(a)Cylinder	1	※ ↑	30	Washer	1	8041 5011 00 00
	(b)Spring Roll Pin	1	9250 1030 00 00		YX - 280A & 280B		
(c)Spring Roll Pin	1	9250 1017 00 00	31	(a)Ball	1	9150 3009 00 00	
8	Rotor	1	0081 0305 01 00	31	(b)Bit Chuck	1	2057 0414 00 00
9	Vane	5	0081 0306 00 00	31	(c)Spring	1	8020 1137 00 00
10	Lower Plate Assy.	1set	0081 0307 02 99	31	(d)Spring Washer	1	2057 0419 00 00
	(a)Lower Plate	1	0081 0307 02 00	31	(e)Retaining Ring	1	8030 1009 00 00
	(b)Ball Bearing	1	9100 1046 00 00	Optional Parts			
	(c)FF Pin	1	8055 1053 00 00	18 <sup>1</sup>	Main Shaft(3/8sq)	1	0081 0614 04 01
11	Lower Plate Spacer	1	0084 0311 00 00				
12	Liner Case(A) Assy.	1set	0259 0422 00 98				
	(a)Liner Case	1	※ ↑				
	(b)Screw	1	9480 2024 00 00				
	(c)Rubber Plate	2	0259 0047 00 00				
	(d)Spring	1	8020 1288 00 00				
	(e)Screw	1	9480 2031 00 00				
(f)"O"Ring	1	9010 4019 00 00					

The part marked "※" can not be supplied individually. So please order it as a unit of assembly shown by arrow mark (↑).