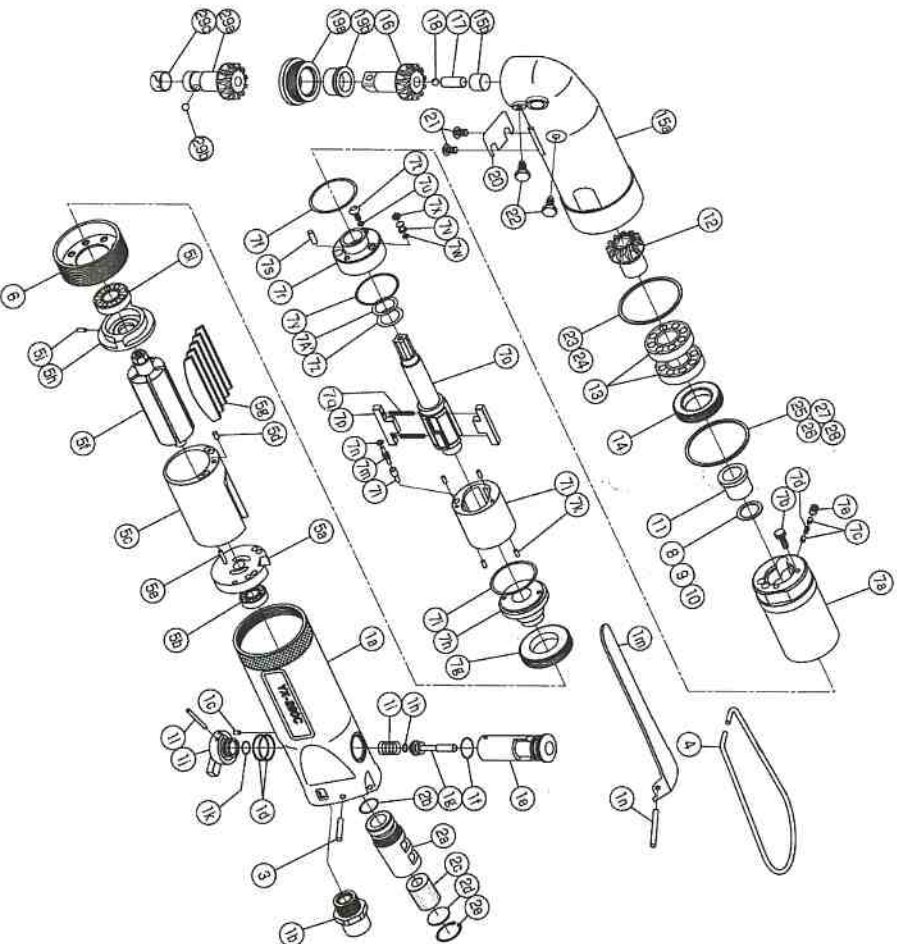


## IMPULSE WRENCH

MODEL (YES.No.)	TOOL No.
YX-280C (01)	0291 0000 0100
YX-280CA (01)	0291 0000 0100

### Exploded View



The part "※" can not be supplied individually. So please order it as a unit of assembly shown by arrow mark (↑).  
 ☆marked parts; use one of them. ★marked parts may be not used, in some case.

**YOKOTA INDUSTRIAL CO., LTD.**

### Parts List

No.	Name of Parts	Per Set	Parts No.
1	Motor Case Assy.	1set	0291 0011 00 99
	(a) Motor Case	1	※
	(b) Hose Joint	1	0237 0113 00 00
	(c) Spring Pin (2x5)	1	9250 1010 00 00
	(d) O - Ring (N1.5)	2	9010 4008 00 00
	Reverse Valve Assy.	1set	※
	(e) Reverse Valve	1	0087 0005 00 00
	(f) O - Ring (N12.5)	1	9010 4006 00 00
	Throttle Rod Assy.	1set	※
	(g) Throttle Rod	1	0087 0106 00 00
	(h) O - Ring (No.3)	1	9010 3021 00 00
	(i) Spring (8x16)	1	8020 1066 00 00
	Reverse Lever Assy.	1set	※
	(j) Reverse Lever	1	0084 0007 00 00
	(k) O - Ring (P8)	1	9010 1006 00 00
	(l) Spring Pin (2x18)	1	9250 1020 00 00
	(m) Throttle Lever	1	0831 0110 00 00
	(n) Spring Pin (3x25)	1	9250 5001 00 00
2	Silencer Assy.	1set	0081 0053 00 99
	(a) Silencer Body	1	※
	(b) O - Ring (N10)	1	9010 4004 00 00
	(c) Silencer Sheet (B)	1	0095 0032 00 02
	(d) Silencer Cap	1	2206 0094 00 00
3	Spring Pin (FTW-14)	1	9040 1006 00 00
4	Hangar	1	0004 0017 00 00
5	Motor Assy.	1set	0084 0305 0399
	(a) Upper Plate	1set	0081 0303 01 99
	(b) Ball Bearing (697WC2)	1	9102 3001 00 00
	Cylinder Assy.	1set	0084 0304 01 99
	(c) Cylinder	1	※
	(d) Spring Pin (2.5x6)	1	9250 1030 00 00
	(e) Spring Pin (2x12)	1	9250 1015 00 00
	(f) Rotor	1	0081 0305 01 00
	(g) Vane	5	0081 0306 0100
	Lower Plate Assy.	1set	0081 0307 02 99
	(h) Lower Plate	1	0081 0307 02 00
	(i) Ball Bearing (6900)	1	9100 1046 00 00
	(j) Pin (2.5x6)	1	8055 1053 00 00
6	Lower Plate Spacer	1	0084 0311 00 00
7	Liner Case Assy.	1set	0291 0422 0399
	Liner Case (A) Assy.	1set	0291 0422 0196
	(a) Liner Case	1	※
	(b) Adjust Bolt	1	0083 0622 0100
	(c) Rubber Plate (3x5)	2	0259 0047 00 00
	(d) Spring	1	8020 1288 00 00
	(e) Bolt with Hex. Hole (M4x4)	1	9480 2031 00 00
	(f) O - Ring (N30)	1	9010 4019 00 00
	(g) Liner Cap	1	0081 0423 01 00
	(h) Liner Upper Plate	1	0259 0424 01 00
	(i) O - Ring (1.5x26.5x2.95)	1	9010 6023 00 00
	Liner Assy.	1set	0259 0425 00 99
	(j) Liner	1	0259 0425 00 00
	(k) AA Pin (2X5 41-44HRC)	4	8052 3002 0000
	(l) Relief Valve	1	0081 0245 01 00
	Spring Guide (B) Assy.	1set	0081 0510 01 99
	(m) Spring Guide (B)	1	※
	(n) O - Ring (0.7x2x3.4)	1	9010 6020 00 00
	(o) Liner Shaft	1	0291 0796 00 00
	(p) Blade	2	0081 0719 03 00
	(q) Spring (3.1x20)	2	8020 1286 00 00
	Liner Lower Plate Assy.	1set	0156 0426 00 99
	(r) Liner Lower Plate	1	※
	(s) Spring Pin (3x8)	1	9250 2022 00 00
	(t) Oil Plug	1	0081 0010 01 00
	(u) O - Ring (N3)	1	9010 4025 00 00
	Oil Stop Cap Assy.	1set	0081 0602 00 99
	(v) Oil Stop Cap	1	※
	(w) O - Ring (N2)	1	9010 4001 00 00
	(x) Back-up Ring (N2)	1	9090 2001 00 00
	(y) O - Ring (1x25.2x27.2)	1	9010 6012 00 00
	(z) O - Ring (2.3x11.8x16.4)	1	9011 7001 0000
	(A) Back-up Ring (12x18x0.8)	1	9090 1010 00 00
8*	Washer (12.5x18x0.3)	1	8041 5034 00 00
9*	Washer (12.5x18x0.5)	1	8041 5011 00 00
10*	Washer (12.5x18x1)	1	8041 5021 00 00
11	Spacer	1	0291 0119 00 00
12	Bevel Gear Shaft	1	0291 0640 00 00
13	Ball Bearing (6902)	2	9100 1036 00 00
14	Bearing Cap	1	0083 0618 00 00
15	Hammer Case Assy.	1set	0291 0401 00 99
	(a) Hammer Case	1	0291 0401 00 00
	(b) Washer Bushing	1	2064 0664 00 00
16	Spindle	1	0007 0641 00 00
17	Spindle Arbor	1	2064 0626 00 00
18	Ball (4mm)	1	9150 1006 00 00
19	Hammer Case Cap Assy.	1set	2064 0412 00 99
	(a) Hammer Case Cap	1	2064 0412 00 00
	(b) Spindle Bushing	1	2064 0643 02 00
20	Cover Plate	1	0083 0014 00 00
21	Cross Recessed Head Screw (M4x8)	2	9480 2003 00 00
22	Hex. Set Bolt (M4x8)	2	8070 7007 00 00
23*	Washer (37x40.3x1)	1	8040 1159 00 00
24*	Washer (37x40.3x1.7)	1	8040 1160 00 00
25*	ST-Packing (37x40.3x0.1)	1	8011 1087 00 00
26*	ST-Packing (37x40.3x0.2)	1	8011 1088 00 00
27*	ST-Packing (37x40.3x0.3)	1	8011 1089 00 00
28*	ST-Packing (37x40.3x0.5)	1	8011 1090 00 00
	Parts for YX-280CA		
29	Spindle (A) Assy.	1set	0007 0614 02 99
	(a) Spindle (A)	1	0007 0614 00 01
	(b) Ball (4mm)	1	9150 1006 00 00
	(c) Band	1	2032 0415 00 00
	Standard Accessories		
	Swivel Joint	1	9690 0015 00 00
	TF Pin (2x90)	1	8051 6001 00 00
	Special Accessory		
	Hose Nipple Assy.	1	8110 1004 00 99