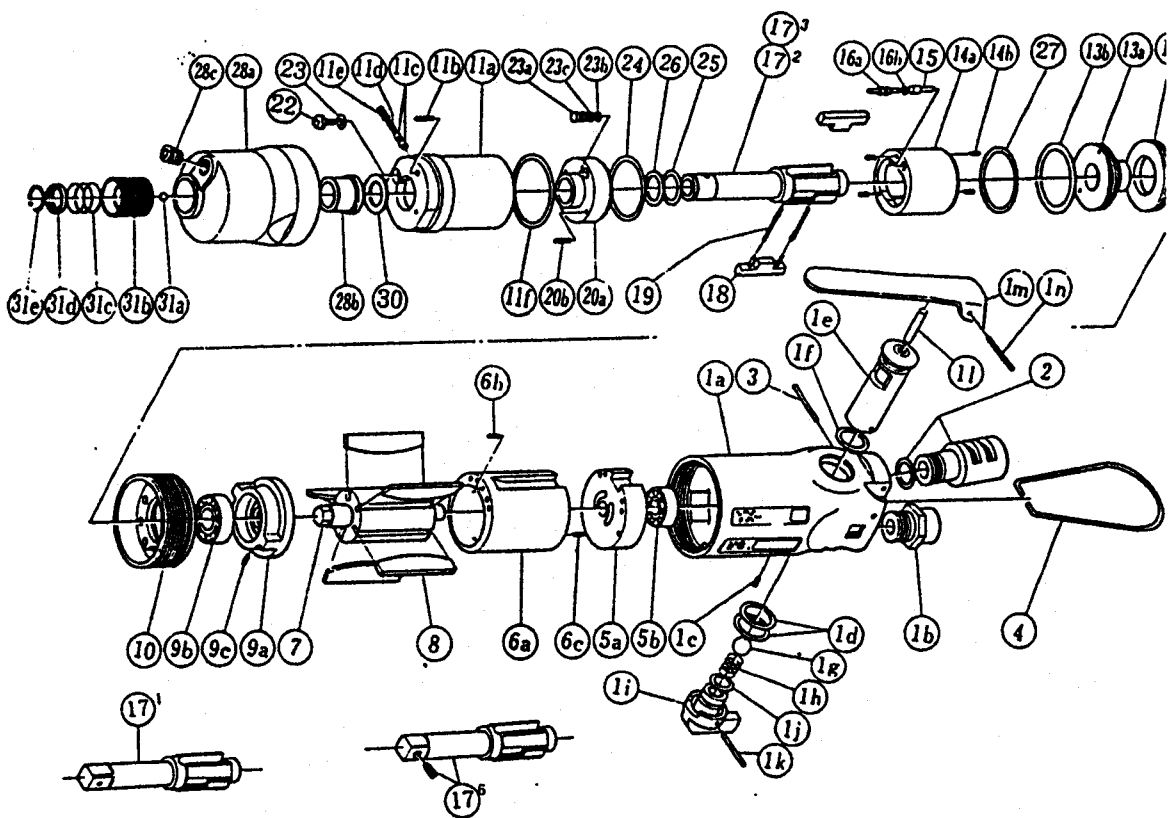


yokota
FA SYSTEM & AIR TOOLS

TWIN 2 BLADE IMPULSE WRENCHES

MODELS (YES. NO.)	TOOL NO.
YX-280S (05)	0084 0000 05 04
YX-280SA (05)	0084 0000 05 01
YX-280SB (05)	0084 0000 05 02

EXPLODED VIEW



YOKOTA EUROPA BV

P.O. BOX 392 NL-1000 AJ AMSTERDAM PHONE 020-625 29 53 FAX 020-625 35

Hydraulic Impulse Wrenches, Impact Wrenches, Drills, Grinders, Screwdrivers, Chippers, Scalars, Pumps

PARTS LIST

No.	Name of Parts	Per Set	Parts No.	No.	Name of Parts	Per Set	Parts No.
1	Motor Case Assy.	1set	0084 0011 02 99	14	Liner Assy.	1set	0259 0425 00 99
	(a)Motor Case	1	0084 0011 02 00		(a)Liner	1	※ ↑
	(b)Hose Joint	1	0237 0113 00 00		(b)AA Pin	4	8051 3091 00 00
	(c)Spring Roll Pin	1	9250 1010 00 00	15	Relief Valve	1	0081 0245 01 00
	(d)"O"Ring	2	9010 4008 00 00		16	Spring Guide(B) Assy.	1set
	Reverse Valve Assy.	1set	0080 0005 00 99	(a)Spring Guide(B)		1	※ ↑
	(e)Reverse Valve	1	※ ↑	(b)"O"Ring	1	9010 6020 00 00	
	(f)"O"Ring	1	9010 4006 00 00	17 ²	Main Shaft(A) YX-280SA	1	0081 0614 04 51
	(g)Ball	1	9150 4002 00 00		17 ³	Main Shaft(B) YX-280SB	1
	(h)Spring	1	8020 1066 00 00	17 ⁶	Main Shaft(P) Assy. YX-280S	1set	0081 0614 05 59
	Reverse Lever Assy.	1set	0084 0007 00 99	18	Blade	2	0081 0719 03 00
	(i)Reverse Lever	1	※ ↑	19	Spring	2	8020 1244 00 00
	(j)"O"Ring	1	9010 1006 00 00	20	Liner Lower Plate Assy.	1set	0081 0426 01 99
	(k)Spring Roll Pin	1	9250 1021 00 00		(a)Liner Lower Plate	1	※ ↑
	(l)AA Pin	1	8051 3057 00 00	(b)Spring Roll Pin	1	9250 2022 00 00	
	(m)Throttle Lever	1	0931 0110 00 00	21	Oil Plug	1	0081 0010 00 00
	(n)Spring Roll Pin	1	9250 5001 00 00	22	"O"Ring	1	9010 4025 00 00
	2	Silencer Assy.	1set	0081 0053 00 99	23	Oil Stop Cap Assy.	1set
3	Spring Roll Pin	1	9250 1050 00 00	(a)Oil Stop Cap		1	※ ↑
4	Hanger	1	0004 0017 00 00	(b)"O"Ring		1	9010 4001 00 00
5	Upper Plate Assy.	1set	0081 0303 01 99	(c)Backup Ring	1	9090 2001 00 00	
	(a)Upper Plate	1	0081 0303 01 00	24	"O"Ring	1	9010 6012 00 00
(b)Ball Bearing	1	9100 1060 00 00	25	"O"Ring	1	9010 6019 00 00	
6	Cylinder Assy.	1set	0084 0304 01 99	26	Backup Ring	1	9090 1010 00 00
	(a)Cylinder	1	※ ↑	27	"O"Ring	1	9010 6023 00 00
	(b)Spring Roll Pin	1	9250 1030 00 00	28	Hammer Case Assy.	1set	0081 0401 01 99
(c)Spring Roll Pin	1	9250 1015 00 00	(a)Hammer Case		1	0081 0401 01 00	
7	Rotor	1	0081 0305 01 00		(b)Main Shaft Bushing	1	0081 0612 00 00
8	Vane	5	0081 0306 00 00	(c)Socket Plug	1	8210 5001 00 00	
9	Lower Plate Assy.	1set	0081 0307 02 99	29	Washer	1	8041 5011 00 00
	(a)Lower Plate	1	0081 0307 02 00	YX - 280SA & 280SB			
	(b)Ball Bearing	1	9100 1046 00 00	30	(a)Ball	1	9150 3009 00 00
(c)FF Pin	1	8055 1053 00 00	30	(b)Bit Chuck	1	2057 0414 00 00	
10	Lower Plate Spacer	1	0084 0311 00 00	30	(c)Spring	1	8020 1137 00 00
11	Liner Case(A) Assy.	1set	0081 0422 06 99	30	(d)Spring Washer	1	2057 0419 00 00
	(a)Liner Case	1	※ ↑	30	(e)Retaining Ring	1	8030 1009 00 00
	(b)Screw	1	9480 2024 00 00	Optional Parts			
	(c)Rubber Plate	2	0081 0047 00 00	17 ¹	Main Shaft(3/8sq)	1	0081 0614 04 01
	(d)Spring	1	8020 1288 00 00				
	(e)Screw	1	9480 2028 00 00				
(f)"O"Ring	1	9010 4019 00 00					
12	Liner Cap	1	0081 0423 01 00				
13	Liner Upper Plate Assy.	1set	0259 0424 01 99				
	(a)Liner Upper Plate	1	※ ↑				
(b)"O"Ring	1	9010 6023 00 00					

The part marked "※" can not be supplied individually. So please order it as a unit of assembly shown by arrow mark (↑).