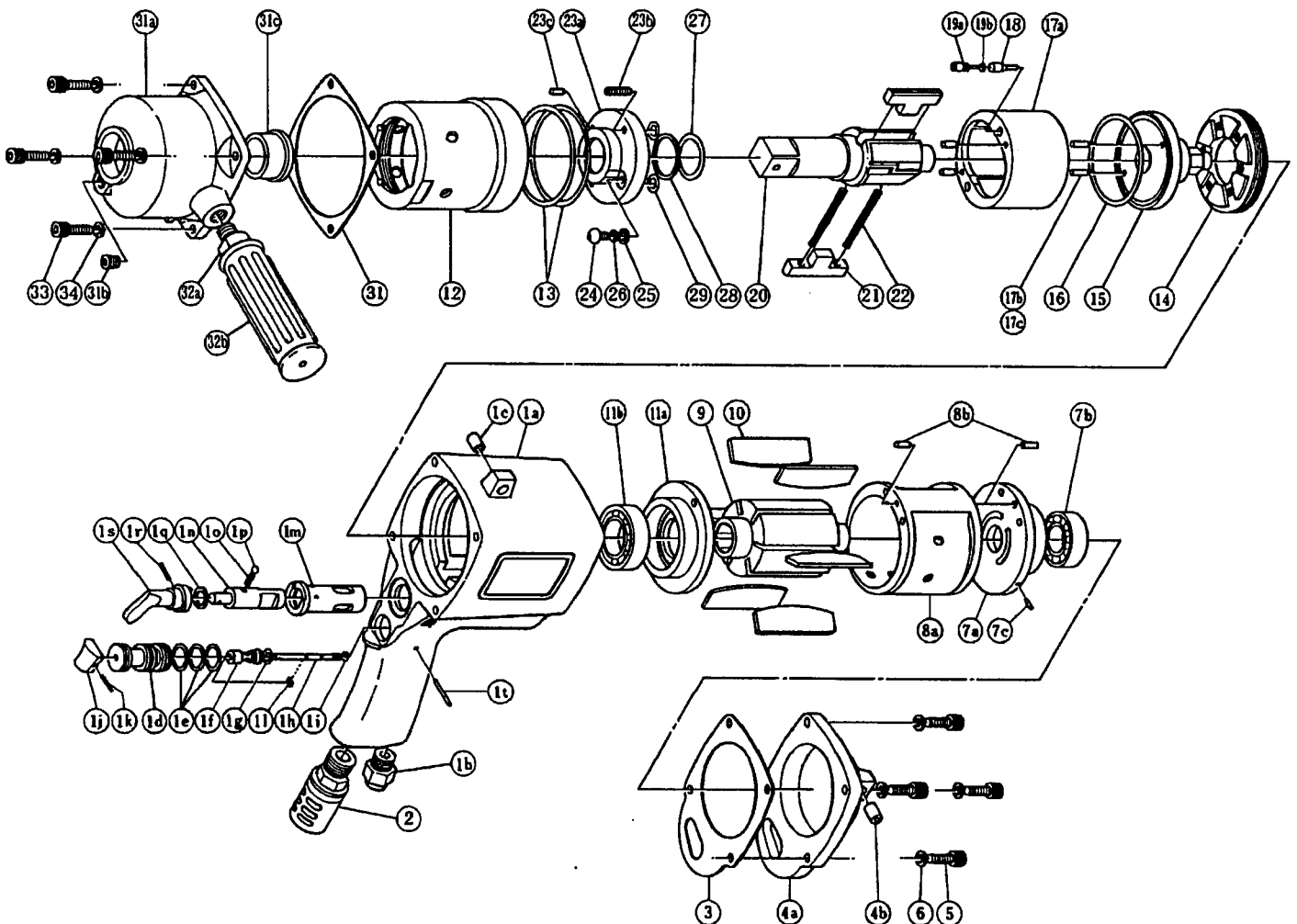


2 BLADE IMPULSE WRENCH

MODEL (YES NO.)	TOOL NO.
YX - 3000 (05)	0405 0000 05 00

EXPLODED VIEW



YOKOTA EUROPA BV

e-mail: info@impulsetools.com <http://www.impulsetools.com>
P.O. BOX 392 NL-1000 AJ AMSTERDAM PHONE 020-625 29 53 FAX 020-625 35 69
Hydraulic Impulse Wrenches, Impact Wrenches, Drills, Grinders, Screw drivers, Chippers, Scalars, Pumps.

■ PARTS LIST

No.	Name of Parts	Per Set	Parts No.	No.	Name of Parts	Per Set	Parts No.
1	Motor Case Assy.	1set	0405 0011 00 99	13	O Ring (N63)	2	9010 4038 00 00
	(a) Motor Case	1	0405 0011 00 00	14	Liner Cap	1	0405 0423 00 00
	(b) Hose Joint	1	0237 0113 00 00	15	Liner Upper Plate	1	0405 0424 01 00
	(c) Spring Pin (8 × 12)	1	9250 1110 00 00	16	O Ring (N56)	1	9010 4037 00 00
	Throttle Bushing Assy.	1set	0229 0104 00 99	17	Liner Assy.	1set	0405 0425 03 99
	(d) Throttle Bushing	1	※ ↑		(a) Liner	1	※ ↑
	(e) O Ring (N15)	3	9010 4008 00 00		(b) Pin FF (4.5 × 7.5)	2	8051 1175 00 00
	Throttle Rod Bushing Assy.	1set	0323 0105 00 99	(c) Pin FF (5 × 7)	2	8051 1182 00 00	
	(f) Throttle Rod Bushing	1	※ ↑	18	Relief Valve	1	0405 0245 00 00
	(g) O Ring (No.5)	1	9010 3022 00 00	19	Spring Guide B Assy.	1set	0405 0510 00 99
	Throttle Rod Assy.	1set	0229 0106 00 99		(a) Spring Guide B	1	※ ↑
	(h) Throttle Rod	1	※ ↑	(b) O Ring (P3)	1	9010 1001 00 00	
	(i) O Ring (N2)	1	9010 4001 00 00	20	Main Shaft	1	0405 0614 01 01
	(j) Throttle Knob	1	2024 0153 00 00	21	Blade	2	0405 0719 01 00
	(k) Spring Pin (1.5 × 14)	1	9250 1005 00 00	22	Spring (4.6 × 57)	2	8020 1293 00 00
	(l) Snap Ring (ETW-2.8)	1	9040 5008 00 00	23	Liner Lower Plate A Assy.	1set	0405 0426 04 98
	(m) Reverse Bushing	1	0235 0004 00 00		(a) Liner Lower Plate	1	※ ↑
	(n) Reverse Valve	1	0235 0005 00 00		(b) Screw (M5 × 16)	1	9480 2025 00 00
	(o) Spring (4 × 6)	1	8020 1022 00 00	(c) Spring Pin (6 × 8)	1	9250 2028 00 00	
	(p) Ball (4mm)	1	9150 1005 00 00	24	Hex. Socket Button Bolt (M5 × 8)	1	8071 1011 00 00
(q) Snap Ring (IRTW-14)	1	9040 3004 00 00	25	Washer (7.5 × 9.5 × 1.2)	1	8040 1127 00 00	
(r) Spring Pin (3 × 14)	1	9250 1049 00 00	26	O Ring (N5)	1	9010 4033 00 00	
(s) Reverse Lever	1	0048 0007 01 00	27	O Ring (2.4 × 24.7 × 29.5)	1	9010 6021 00 00	
(t) Pin G (3 × 24)	1	8410 6024 00 00	28	Backup Ring (25 × 29 × 1)	1	9090 1008 00 00	
2	Silencer Assy.	1set	0405 0053 01 99	29	O Ring (N8)	2	9010 4028 00 00
3	S-Packing A	1	0405 0003 00 01	30	S-Packing B	1	0405 0003 00 02
4	Motor Case Cover Assy.	1set	0405 0001 00 99	31	Hammer Case Assy.	1set	0405 0401 01 99
	(a) Motor Case Cover	1	※ ↑		(a) Hammer Case	1	0405 0401 01 00
(b) Spring Pin (8 × 12)	1	9250 1110 00 00	(b) Socket Plug (1/8)		1	8210 5001 00 00	
5	Hex. Socket Bolt (M6 × 22)	4	8070 3035 00 00	(c) Main Shaft Bushing	1	0405 0612 00 00	
6	Spring Washer (M6)	4	9200 3006 00 00	32	Dead Handle Assy.	1set	0405 0013 00 99
7	Upper Plate Assy.	1set	0405 0303 01 99	(a) Dead Handle	1	※ ↑	
	(a) Upper Plate	1	0405 0303 01 00	(b) Dead Handle Cover	1	0405 0019 00 00	
	(b) Ball Bearing (6003)	1	9100 1018 00 00	33	Hex. Socket Bolt (M6 × 22)	4	8070 3035 00 00
	(c) Spring Pin (2.5 × 6)	1	9250 1030 00 00	34	Spring Washer (M6)	4	9200 3006 00 00
8	Cylinder Assy.	1set	0405 0304 00 99	Standard Accessories			
	(a) Cylinder	1	※ ↑	Touch Joint (1/4-02)	1	9690 0002 00 00	
(b) Spring Pin (4 × 10)	2	9250 1066 00 00	Hexagon Wrench (H2.5 × 70 × 70)	1	9610 1014 00 00		
9	Rotor	1	0405 0305 00 00	Hexagon Wrench (H5)	1	9610 1006 00 00	
10	Vane	6	0405 0306 00 00	Optional Accessories			
11	Lower Plate Assy.	1set	0405 0307 01 99	Tune Up Kit	1set	0405 0991 00 99	
	(a) Lower Plate	1	0405 0307 01 00				
(b) Ball Bearing (6905)	1	9100 1047 00 00					
12	Liner Case	1	0405 0422 01 00				

The part marked "※" can not be supplied individually. So please order it as a unit of assembly shown by arrow mark (↑).