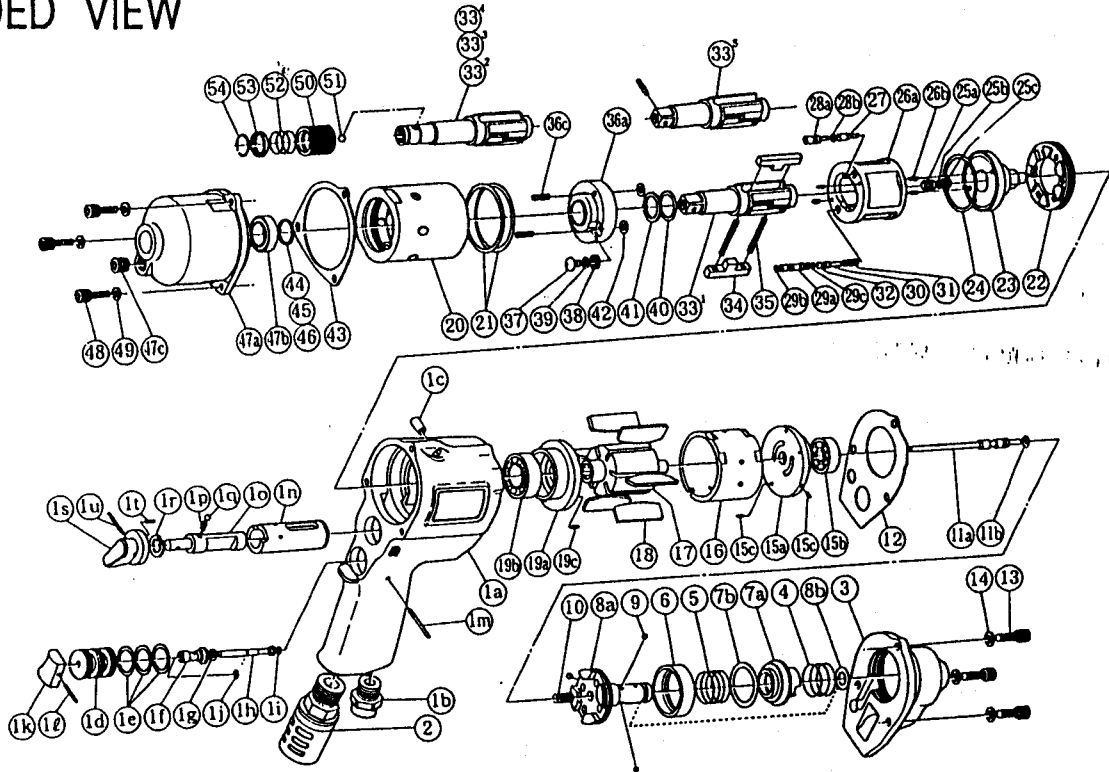


SHUT - OFF 2 BLADE • IMPULSE WRENCHES

MODEL (YES. NO.)	TOOL NO.
YXS - 500 (01)	0245 0000 01 04
YXS - 500A (01)	0245 0000 01 01
YXS - 500B (01)	0245 0000 01 02

(1E)

EXPLODED VIEW



No.	Name of Parts	Per Set	Parts No.
1	Motor Case Assy.	1set	0245 0011 00 99
	(a) Motor Case	1	0071 0011 00 00
	(b) Hose Joint	1	0237 0113 00 00
	(c) Spring Roll Pin	1	9250 1083 00 00
2	Throttle Bushing Assy.	1set	0245 0104 00 99
	(d) Throttle Bushing	1	* ↑
	(e) "O"Ring	3	9010 4008 00 00
3	Throttle Rod Bushing Assy.	1set	0078 0105 00 99
	(f) Throttle Rod Bushing	1	* ↑
	(g) "O"Ring	1	9010 3021 00 00
4	Throttle Rod Assy.	1set	2058 0106 00 99
	(h) Throttle Rod	1	* ↑
	(i) "O"Ring	1	9010 4001 00 00

No.	Name of Parts	Per Set	Parts No.	
5	(j) Snap Ring	1	9040 5008 00 00	
	(k) Throttle Knob	1	2024 0153 00 00	
	(l) Spring Roll Pin	1	9250 1005 00 00	
	(m) Pin G	1	8410 6024 00 00	
	(n) Reverse Bushing	1	0128 0004 00 00	
	(o) Reverse Valve	1	0128 0005 00 00	
	(p) Spring	1	8020 1216 00 00	
	(q) Ball	1	9150 3009 00 00	
	(r) Snap Ring	1	9040 3002 00 00	
	6	Reverse Lever Assy.	1	0245 0007 00 99
		(s) Reverse Lever	1	* ↑
		(t) Spring Roll Pin	1	9250 1041 00 00
	7	(u) Spring Roll Pin	1	9250 1049 00 00



YOKOTA EUROPA BV

P.O. BOX 392 NL - 1000 AJ AMSTERDAM PHONE 020 - 625 29 53 FAX 020 - 625 35 69

Hydraulic Impulse Wrenches, Impact Wrenches, Drills, Grinders, Screwdrivers, Chippers, Scalars, Pumps.

■ 部 品 表

No.	Name of Parts	Per Set	Parts No.	No.	Name of Parts	Per Set	Parts No.	
2	Silencer Assy.	1set	3048 0053 02 99	30	Spring Guide	1	0245 0510 00 00	
3	Motor Case Cover	1	0245 0001 00 00	31	Spring	1	8020 1265 00 00	
4	Spring	1	8020 1262 00 00	32	Ball	1	9150 1004 00 00	
5	Spring	1	8020 1261 00 00	33 ^b	Main Shaft (P) Assy.YXS - 500	1set	0245 0614 01 59	
6	Control Plate	1	0245 0226 00 00	33 ²	Main Shaft (A) YXS - 500A	1	0245 0614 00 51	
7	Control Valve Assy.	1set	0245 0241 00 99	33 ³	Main Shaft (B) YXS - 500B	1	0245 0614 00 52	
	(a) Control Valve	1	※ ↑	34	Blade	2	0077 0719 01 00	
	(b) "O"Ring	1	9010 1019 00 00	35	Spring	2	8020 1305 00 00	
8	Control Bushing Assy.	1set	0245 0236 01 99	36	Liner Lower Plate (A) Assy.	1set	0245 0426 01 98	
	(a) Control Bushing	1	※ ↑		(a) Liner Lower Plate	1	※ ↑	
	(b) "O"Ring	1	9010 4004 00 00		(b) Not Used			
9	Ball	3	9150 1004 00 00	(c) Screw	2	9480 2026 00 00		
10	Spring	1	8020 1268 00 00	37	Oil Plug	1	0048 0010 00 00	
11	Control Shaft Assy.	1set	0245 0224 00 99	38	Washer	1	8040 1073 00 00	
	(a) Control Shaft	1	※ ↑	39	"O"Ring	1	9010 4021 00 00	
	(b) "O"Ring	1	9010 4025 00 00	40	"O"Ring	1	9010 6014 00 00	
12	S - Packing (A)	1	0071 0003 00 01	41	Backup Ring	1	9090 1005 00 00	
13	Hex. Socket Bolt	3	8070 3052 00 00	42	"O"Ring	2	9010 4033 00 00	
14	Spring Washer	3	9200 3005 00 00	43	S - Packing (B)	1	0048 0003 01 02	
	Upper Plate Assy.	1set	0245 0303 01 99	44	ST - Packing	1	8011 1059 00 00	
	(a) Upper Plate	1	0245 0303 01 00	45	ST - Packing	1	8011 1060 00 00	
(b) Ball Bearing	1	9100 1004 00 00	46	ST - Packing	1	8011 1061 00 00		
(c) Spring Roll Pin	2	9250 6001 00 00	47	Hammer Case Assy.	1set	0245 0401 00 99		
16	Cylinder	1		0048 0304 00 00	(a) Hammer Case	1	0245 0401 00 00	
17	Rotor	1		0245 0305 00 00	(b) Ball Bearing	1	9100 5028 00 00	
18	Vane	6	0048 0306 00 00	(c) Socket Plug	1	8210 5001 00 00		
19	Lower Plate Assy.	1set	0943 0307 00 99	48	Hex. Socket Bolt	3	8070 3008 00 00	
	(a) Lower Plate	1	0943 0307 00 00	49	Spring Washer	3	9200 3004 00 00	
	(b) Ball Bearing	1	9100 1036 00 00					
(c) Spring Roll Pin	1	9250 6001 00 00	YXS - 500A & 500B					
20	Liner Case	1	0077 0422 00 00	50	Bit Chuck	1	2057 0414 00 00	
21	"O"Ring	2	9010 4016 00 00	51	Ball	1	9150 3009 00 00	
22	Liner Cap	1	0048 0423 00 00	52	Spring	1	8020 1137 00 00	
23	Liner Upper Plate	1	0245 0424 00 00	53	Spring Washer	1	2057 0419 00 00	
24	"O"Ring	1	9010 4014 00 00	54	Retaining Ring	1	8030 1009 00 00	
25	Sensor Assy.	1set	0245 0794 00 99					
	(a) Sensor	1	※ ↑	Standard Accessories				
	(b) "O"Ring	1	9010 1001 00 00	Hexagon Wrench	1	9610 1012 00 00		
(c) Backup Ring	1	9090 2003 00 00	Hexagon Wrench	1	9610 1006 00 00			
26	Liner Assy.	1set	0245 0425 00 99					
	(a) Liner	1	※ ↑	Optional Parts				
(b) Pin	4	8051 3094 00 00	33 ¹	Main Shaft	1	0245 0614 01 01		
27	Relief Valve	1	0245 0245 00 00					
28	Spring Guide (B) Assy.	1set	0245 0510 00 99					
	(a) Spring Guide (B)	1	※ ↑					
(b) "O"Ring	1	9010 4001 00 00						
29	Check Valve Assy.	1set	0245 0251 00 99					
	(a) Check Valve	1	※ ↑					
	(b) "O"Ring	1	9010 4001 00 00					
(c) "O"Ring	1	9010 6020 00 00						

The part marked "※" can not be supplied individually. So please order it as a unit of assembly shown by arrow mark (↑).