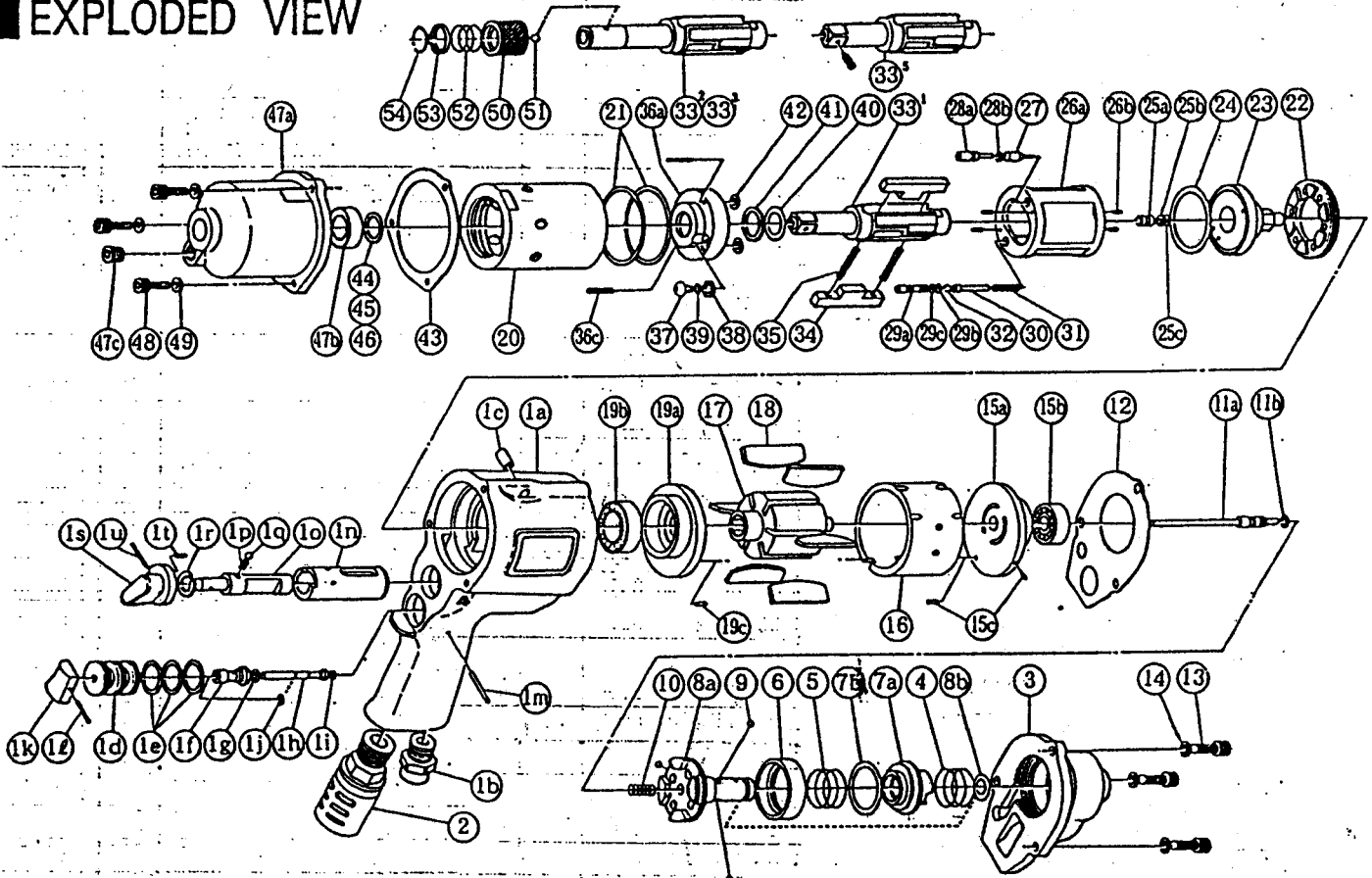


## SHUT - OFF 2 BLADE • IMPULSE WRENCHES

MODELS (YES. NO.)	TOOL NO.
YXS-700 (01)	0246 0000 01 00
YXS-700A (01)	0246 0000 01 01
YXS-700B (01)	0246 0000 01 02

### EXPLODED VIEW



No.	Name of Parts	Per Set	Parts No.	No.	Name of Parts	Per Set	Parts No.
1	Motor Case Assy.	1set	0246.0011.00.99	(j)	Snap Ring (ETW - 2.8)	1	9040.5008.00.00
	(a) Motor Case	1	0128.0011.00.00	(k)	Throttle Knob	1	2024.0153.00.00
	(b) Hose Joint	1	0237.0113.00.00	(l)	Spring Roll Pin (1.5 x 14)	1	9250.1005.00.00
	(c) Spring Roll Pin (6 x 12)	1	9250.1083.00.00	(m)	Pin G (3 x 24)	1	8410.6024.00.00
	Throttle Bushing Assy.	1set	0245.0104.00.99	(n)	Reverse Bushing	1	0128.0004.00.00
	(d) Throttle Bushing	1	※ ↑	(o)	Reverse Valve	1	0128.0005.00.00
	(e) "O" Ring (N15)	3	9010.4008.00.00	(p)	Spring (3 x 9)	1	8020.1216.00.00
	Throttle Rod Bushing Assy.	1set	0117.0105.00.99	(q)	Ball (1/8)	1	9150.3009.00.00
	(f) Throttle Rod Bushing	1	※ ↑	(r)	Snap Ring (IRTW - 12)	1	9040.3002.00.00
	(g) "O" Ring (No.3)	1	9010.3021.00.00		Reverse Lever Assy.	1	0245.0007.00.99
	Throttle Rod Assy.	1set	2058.0106.00.99	(s)	Reverse Lever	1	※ ↑
	(h) Throttle Rod	1	※ ↑	(t)	Spring Roll Pin (3 x 4.5)	1	9250.2004.00.00
	(i) "O" Ring (N2)	1	9010.4001.00.00	(u)	Spring Roll Pin (3 x 14)	1	9250.1049.00.00



# YOKOTA EUROPA BV

P.O. BOX 392 NL-1000 AJ AMSTERDAM PHONE 020-625 29 53 FAX 020-625 35 69

Hydraulic Impulse Wrenches, Impact Wrenches, Drills, Grinders, Screwdrivers, Chippers, Scalers, Pumps.

# ■ PARTS LIST

No.	Name of Parts	Per Set	Parts No.
2	Silencer Assy.	1set	3048 0053 02 99
3	Motor Case Cover	1	0246 0001 00 00
4	Spring (20.5 × 12)	1	8020 1262 00 00
5	Spring (20.5 × 15)	1	8020 1261 00 00
6	Control Plate	1	0245 0226 00 00
7	Control Valve Assy.	1set	0245 0241 00 99
	(a) Control Valve	1	* ↑
	(b) "O" Ring (P22)	1	9010 1019 00 00
8	Control Bushing Assy.	1set	0245 0236 01 99
	(a) Control Bushing	1	* ↑
	(b) "O" Ring (N10)	1	9010 4004 00 00
9	Ball (M3.5)	3	9150 1004 00 00
10	Spring (5.8 × 14)	1	8020 1268 00 00
11	Control Shaft Assy.	1set	0246 0224 00 99
	(a) Control Shaft	1	* ↑
	(b) "O" Ring (N3)	1	9010 4025 00 00
12	S - Packing (A)	1	0128 0003 00 01
13	Hex. Socket Bolt (M5 × 14)	3	8070 3050 00 00
14	Spring Washer (M5)	3	9200 3005 00 00
15	Upper Plate Assy.	1set	0246 0303 01 99
	(a) Upper Plate	1	0246 0303 01 00
	(b) Ball Bearing (# 608)	1	9100 1004 00 00
	(c) Spring Roll Pin (2 × 5)	2	9250 1010 00 00
16	Cylinder	1	0122 0304 00 00
17	Rotor	1	0246 0305 00 00
18	Vane	6	0122 0306 00 00
19	Lower Plate Assy.	1set	0945 0307 00 99
	(a) Lower Plate	1	0945 0307 00 00
	(b) Ball Bearing (# 6902)	1	9100 1036 00 00
	(c) Spring Roll Pin (2 × 5)	1	9250 1010 00 00
20	Liner Case	1	0129 0422 00 00
21	"O" Ring (N38)	2	9010 4016 00 00
22	Liner Cap	1	0048 0423 00 00
23	Liner Upper Plate	1	0245 0424 00 00
24	"O" Ring (N32)	1	9010 4014 00 00
25	Sensor Assy.	1set	0245 0794 00 99
	(a) Sensor	1	* ↑
	(b) "O" Ring (P3)	1	9010 1001 00 00
	(c) Backup Ring (P3)	1	9090 2003 00 00
26	Liner Assy.	1set	0246 0425 00 99
	(a) Liner	1	* ↑
	(b) Pin (3 × 5)	4	8052 1022 00 00
27	Relief Valve	1	0129 0245 00 00
28	Spring Guide(B) Assy.	1set	0246 0510 00 99
	(a) Spring Guide(B)	1	* ↑
	(b) "O" Ring (N2)	1	9010 4001 00 00
29	Check Valve Assy.	1set	0245 0251 00 99
	(a) Check Valve	1	* ↑
	(b) "O" Ring (N2)	1	9010 4001 00 00
	(c) "O" Ring (0.7 × 2 × 3.4)	1	9010 6020 00 00

No.	Name of Parts	Per Set	Parts No.
30	Spring Guide	1	0246 0510 00 00
31	Spring (3.6 × 22.5)	1	8020 1264 00 00
32	Ball (M3.5)	1	9150 1004 00 00
33 <sup>b</sup>	Main Shaft(P) Assy. YXS - 700	1	0246 0614 01 59
33 <sup>2</sup>	Main Shaft (A) YXS - 700A	1	0246 0614 00 51
33 <sup>3</sup>	Main Shaft (B) YXS - 700B	1	0246 0614 00 52
34	Blade	2	0129 0719 01 00
35	Spring (3.55 × 27)	2	8020 1283 00 00
36	Liner Lower Plate(A) Assy.	1set	0245 0426 01 98
	(a) Liner Lower Plate	1	* ↑
	(b) Not Used		
	(c) Screw (M3 × 12.5)	2	9480 2026 00 00
37	Oil Plug (M4)	1	0048 0010 00 00
38	Washer (6.5 × 8.5 × 1.1)	1	8040 1073 00 00
39	"O" Ring (N4)	1	9010 4021 00 00
40	"O" Ring (2.8 × 12.8 × 18.4)	1	9010 6014 00 00
41	Backup Ring (13 × 18 × 0.6)	1	9090 1005 00 00
42	"O" Ring (N5)	2	9010 4033 00 00
43	S - Packing (B)	1	0122 0003 00 02
44	ST - Packing (12.5 × 16.5 × 0.2)	1	8011 1059 00 00
45	ST - Packing (12.5 × 16.5 × 0.3)	1	8011 1060 00 00
46	ST - Packing (12.5 × 16.5 × 0.5)	1	8011 1061 00 00
47	Hammer Case Assy.	1set	0246 0401 00 99
	(a) Hammer Case	1	0246 0401 00 00
	(b) Ball Bearing (# 6801ZZ)	1	9100 5028 00 00
	(c) Socket Plug (PT1/8)	1	8210 2001 00 00
48	Hex.Socket Bolt (M4 × 14)	3	8070 3008 00 00
49	Spring Washer (M4)	3	9200 3004 00 00
YXS - 700A & 700B			
50	Bit Chuck	1	2057 0414 00 00
51	Ball (1/8)	1	9150 3009 00 00
52	Spring (13.5 × 11.2)	1	8020 1137 00 00
53	Spring Washer	1	2057 0419 00 00
54	Retaining Ring (10 × 1)	1	8030 1009 00 00
Standard Accessories			
	Hexagon Wrench (H1.5L)	1	9610 1012 00 00
	Hexagon Wrench (H5)	1	9610 1006 00 00
Optional Parts			
33 <sup>1</sup>	Main Shaft (3/8sq)	1	0246 0614 01 01

The part marked "\*" can not be supplied individually. So please order it as a unit of assembly shown by arrow mark (↑).