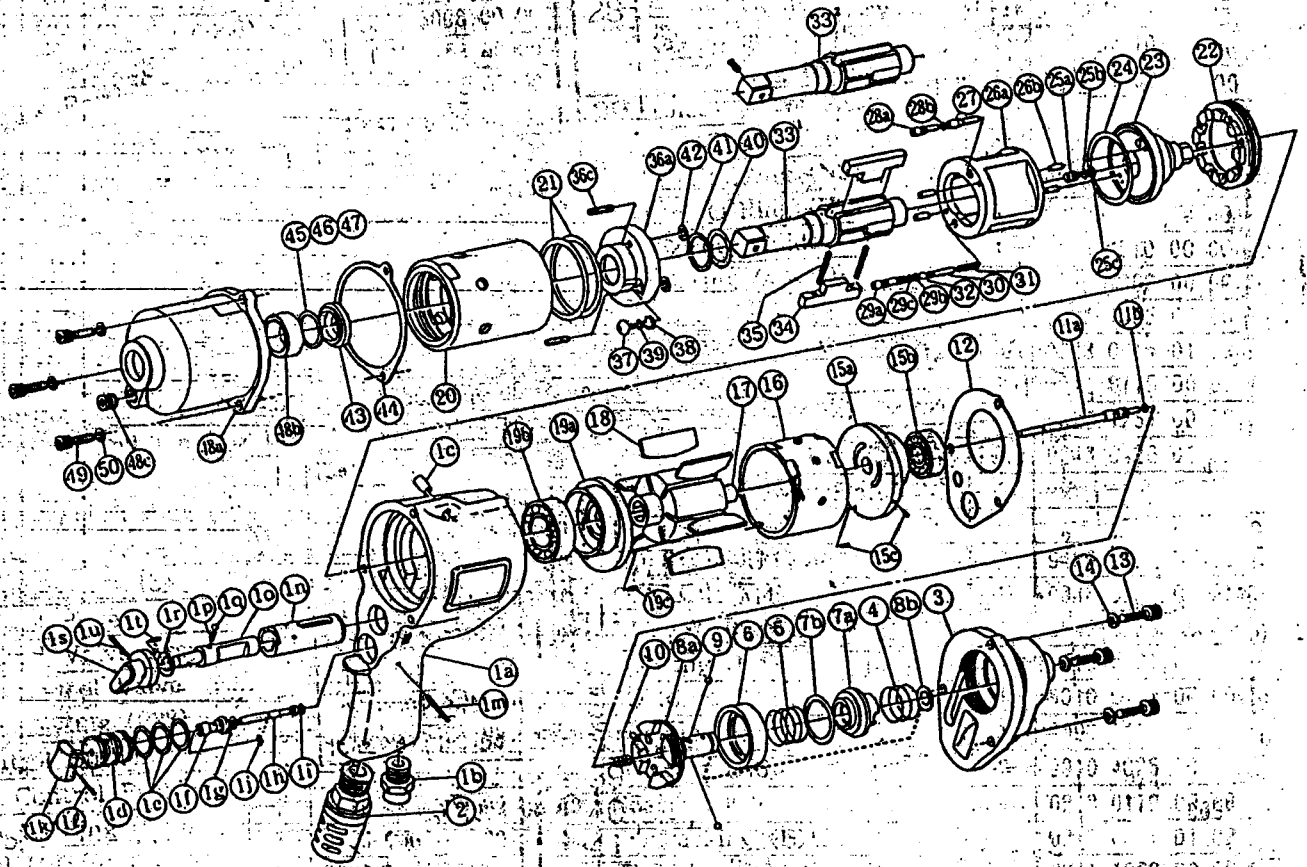


SHUT - OFF 2 BLADE • IMPULSE WRENCH

MODEL (YES. NO.)	TOOL NO.
YX-S-9-0-0-(0-1)	0243 0000 01 00

EXPLODED VIEW



YOKOTA EUROPA BV

P.O. BOX 392 NL-1000 AJ AMSTERDAM PHONE 020-625 29 53 FAX 020-625 35 69

Hydraulic Impulse Wrenches, Impact Wrenches, Drills, Grinders, Screwdrivers, Chippers, Scalars, Pumps.

PARTS LIST

No.	Name of Parts	Per Set	Parts No.	No.	Name of Parts	Per Set	Parts No.
1	Motor Case Assy.	1set	0243 0011 00 99	20	Liner Case	1	0237 0422 00 00
	(a) Motor Case	1	0230 0011 00 00	21	"O"Ring (N45)	2	9010 4043 00 00
	(b) Hose Joint	1	0237 0113 00 00	22	Liner Cap	1	0213 0423 00 00
	(c) Spring Roll Pin (6×12)	1	9250 1083 00 00	23	Liner Upper Plate	1	0243 0424 00 00
	Throttle Bushing Assy.	1set	0245 0104 00 99	24	"O"Ring (N39)	1	9010 4031 00 00
	(d) Throttle Bushing	1	* ↑	25	Sensor Assy.	1set	0245 0794 00 99
	(e) "O"Ring (N15)	3	9010 4008 00 00		(a) Sensor	1	* ↑
	Throttle Rod Bushing Assy.	1set	0117 0105 00 99		(b) "O"Ring (P3)	1	9010 1001 00 00
	(f) Throttle Rod Bushing	1	* ↑		(c) Backup Ring (P3)	1	9090 2003 00 00
	(g) "O"Ring (No.3)	1	9010 3021 00 00	26	Liner Assy.	1set	0243 0425 00 99
	Throttle Rod Assy.	1set	2058 0106 00 99		(a) Liner	1	* ↑
	(h) Throttle Rod	1	* ↑		(b) Pin (3×7)	4	8052 1019 00 00
	(i) "O"Ring (N2)	1	9010 4001 00 00	27	Relief Valve	1	0237 0245 00 00
	(j) Snap Ring (ETW -2.8)	1	9040 5008 00 00	28	Spring Guide (B) Assy.	1set	0243 0510 00 99
	(k) Throttle Knob	1	2024 0153 00 00		(a) Spring Guide (B)	1	* ↑
	(l) Spring Roll Pin (1.5×14)	1	9250 1005 00 00		(b) "O"Ring (N3)	1	9010 4025 00 00
	(m) Pin G (3×24)	1	8410 6024 00 00	29	Check Valve Assy.	1set	0243 0251 00 99
	(n) Reverse Bushing	1	0128 0004 00 00		(a) Check Valve	1	* ↑
	(o) Reverse Valve	1	0128 0005 00 00		(b) "O"Ring (N3)	1	9010 4025 00 00
	(p) Spring (3×9)	1	8020 1216 00 00		(c) "O"Ring (N2)	1	9010 4001 00 00
	(q) Ball (1/8)	1	9150 3009 00 00	30	Spring Guide	1	0243 0510 00 00
	(r) Snap Ring (IRTW - 12)	1	9040 3002 00 00	31	Spring (4×20)	1	8020 1263 00 00
	Reverse Lever Assy.	1	0245 0007 00 99	32	Ball (M4)	1	9150 1005 00 00
	(s) Reverse Lever	1	* ↑	33 ²	Main Shaft (P) Assy.	1set	0243 0614 01 59
	(t) Spring Roll Pin (3×4.5)	1	9250 2004 00 00	34	Blade	2	0241 0719 00 00
	(u) Spring Roll Pin (3×14)	1	9250 1049 00 00	35	Spring (4×32)	2	8020 1251 00 00
2	Silencer Assy.	1set	3048 0053 02 99	36	Liner Lower Plate (A) Assy.	1set	0243 0426 01 98
3	Motor Case Cover	1	0243 0001 00 00		(a) Liner Lower Plate	1	* ↑
4	Spring (20.5×12)	1	8020 1262 00 00		(b) Not Used		
5	Spring (20.5×15)	1	8020 1261 00 00		(c) Screw (M4×14)	2	9480 2022 00 00
6	Control Plate	1	0243 0226 00 00	37	Oil Plug (M4)	1	0048 0010 00 00
7	Control Valve Assy.	1set	0245 0241 00 99	38	Washer (6.5×8.5×1.1)	1	8040 1073 00 00
	(a) Control Valve	1	* ↑	39	"O"Ring (N4)	1	9010 4021 00 00
	(b) "O"Ring (P22)	1	9010 1019 00 00	40	"O"Ring (2.55×17.8×22.9)	1	9010 6017 00 00
8	Control Bushing Assy.	1set	0243 0236 01 99	41	Backup Ring (18×22.4×0.8)	1	9090 1006 00 00
	(a) Control Bushing	1	* ↑	42	"O"Ring (N6)	2	9010 4026 00 00
	(b) "O"Ring (N10)	1	9010 4004 00 00	43	Spacer	1	0243 0119 00 00
9	Ball (M3.5)	3	9150 1004 00 00	44	S-Packing (B)	1	0213 0003 01 02
10	Spring (5.8×14)	1	8020 1268 00 00	45	SI-Packing(17.5×21.5×0.2)	1	8011 1062 00 00
11	Control Shaft Assy.	1set	0243 0224 00 99	46	SI-Packing(17.5×21.5×0.3)	1	8011 1063 00 00
	(a) Control Shaft	1	* ↑	47	SI-Packing(17.5×21.5×0.5)	1	8011 1064 00 00
	(b) "O"Ring (N3)	1	9010 4025 00 00	48	Hammer Case Assy.	1set	0243 0401 00 99
12	S-Packing (A)	1	0230 0003 00 01		(a) Hammer Case	1	0243 0401 00 00
13	Hex. Socket Bolt (M5×18)	3	8070 3052 00 00		(b) Ball Bearing (# 6803ZZ)	1	9100 5027 00 00
14	Spring Washer (M5)	3	9200 3005 00 00		(c) Socket Plug (PT1/8)	1	8210 2001 00 00
15	Upper Plate Assy.	1set	0243 0303 01 99	49	Hex.Socket Bolt (M5×18)	3	8070 3052 00 00
	(a) Upper Plate	1	0243 0303 01 00	50	Spring Washer (M5)	3	9200 3005 00 00
	(b) Ball Bearing (# 6000)	1	9100 1015 00 00				
	(c) Spring Roll Pin (2×5)	2	9250 1010 00 00				
16	Cylinder	1	0213 0304 00 00		Standard Accessories		
17	Rotor	1	0243 0305 00 00		Hexagon Wrench (H2L)	1	9610 1013 00 00
18	Vane	6	0213 0306 00 00		Hexagon Wrench (H5)	1	9610 1006 00 00
19	Lower Plate Assy.	1set	0947 0307 00 99				
	(a) Lower Plate	1	0947 0307 00 00		Optional Part		
	(b) Ball Bearing (# 6003)	1	9100 1018 00 00	33 ¹	Main Shaft (1/2sq)	1	0243 0614 01 01
	(c) Spring Roll Pin (2×5)	1	9250 1010 00 00				

The part marked "*" can not be supplied individually. So please order it as a unit of assembly shown by arrow mark (↑).